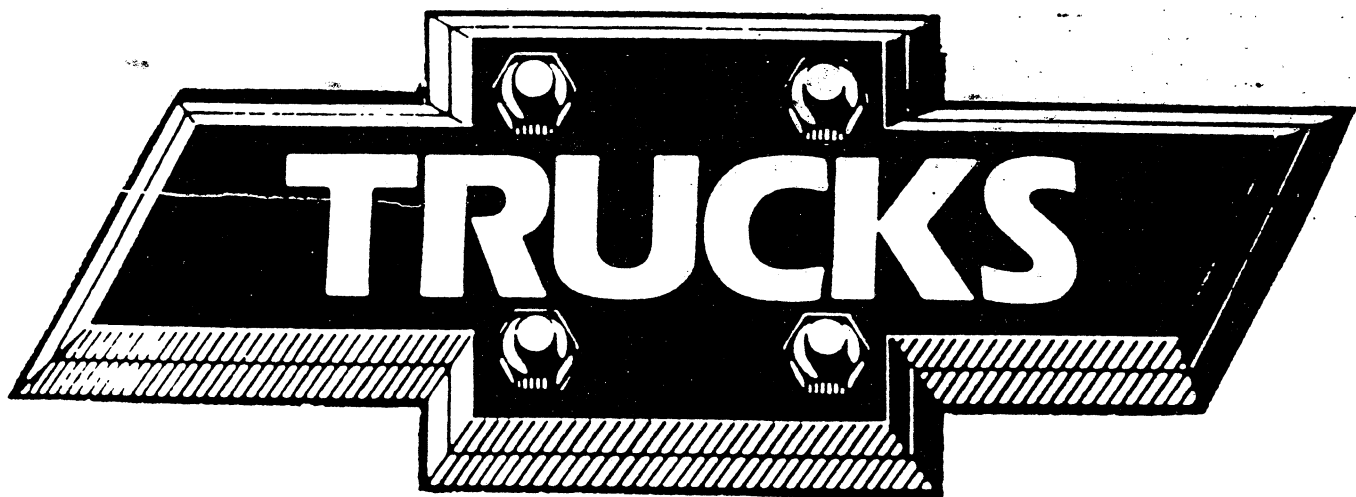
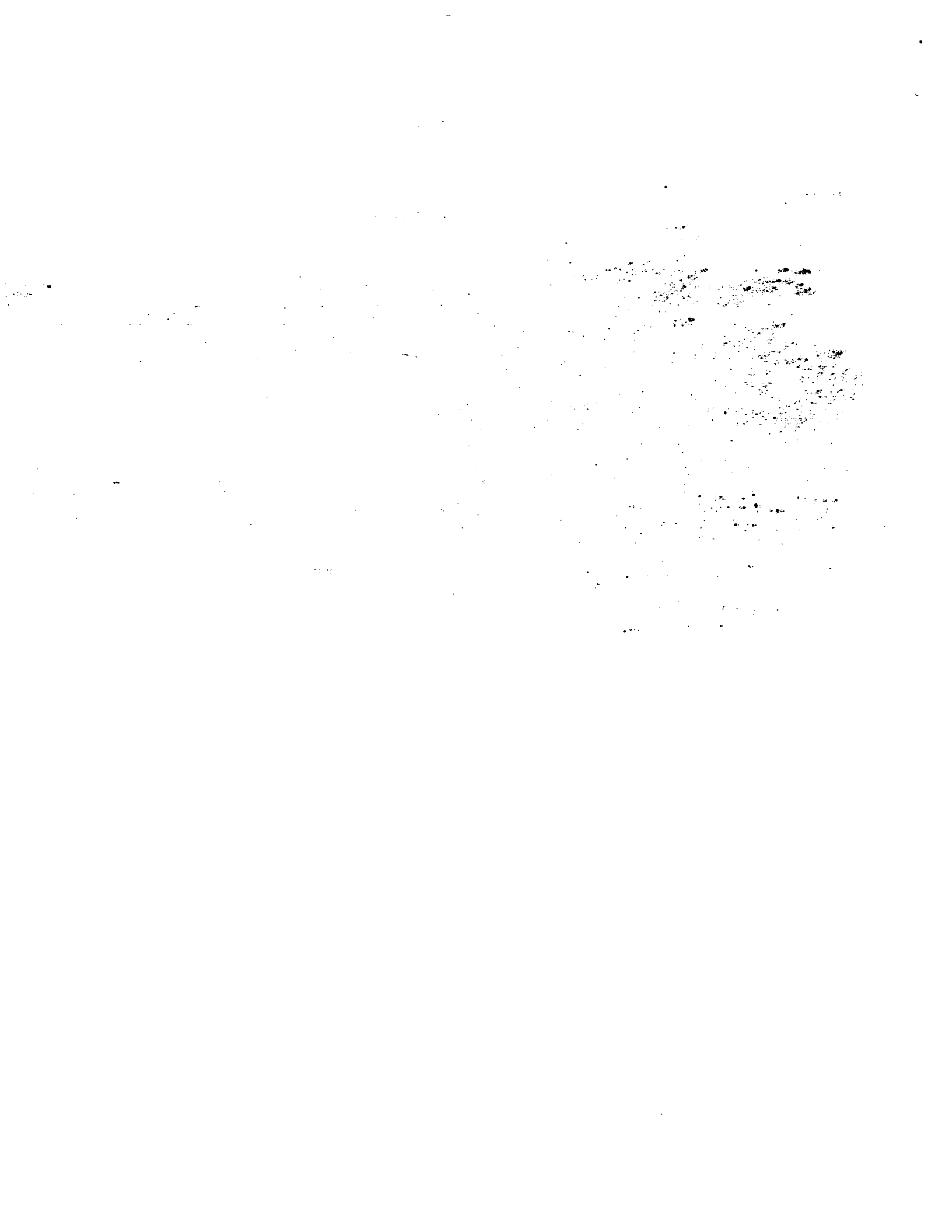


CHEVROLET



1990



1990 LIGHT DUTY TRUCK, MULTIPURPOSE PASSENGER VEHICLE AND INCOMPLETE VEHICLE VIN SYSTEM

TYPICAL VIN 2GCD14KXL1132166

POSITION NO. 1 2 3 4 5 6 7 8 9 10 11 12 13 14 15 16 17

1 = U.S. BUILT
2 = CANADIAN BUILT
3 = MEXICO BUILT
4 = U.S. BUILT
J = JAPAN BUILT

0 = GENERAL MOTORS
G = SUZUKI
B = ISUZU

MAKE
SERIES
BODY TYPE
CHECK DIGIT
PRODUCTION SEQUENCE NO.
PLANT (SEE REVERSE SIDE)
L = 1990 MODEL YEAR

SYNV/DRIVE SYSTEM
LINE & CHASSIS TYPE
ENGINE TYPE

3 **4** **5**

6 **7**

8

CODE	B	C	J	D	E	N	K	L	N	R	T	U	Z	S
DISPL. (L)	4.3	6.2	3.1	2.5	5.0	5.7	3.9	7.4	2.8	4.8	1.6	4.3	4.5	
CYLINDERS	V6	V8	V6	L4	V8	V8	L4	V8	V6	L6	L4	V6	V8	
FUEL SYSTEM	F	DI	F	F	F	F	DI	DI	F	1BBL	F	F	F	
DRV. USAGE	C.T	C.T	C,1,2,3	C.T	C.T	C.T	C.T	C.T	C.T	C.T	C	C.T	6	
PRODUCED IN*	U	U	U	U	U	U.C	C,U	U	U	U.C.M	M	J	U	U

*LEGEND: U=U.S., C=CANADA, M=MEXICO, J=JAPAN

General Motors

Truck 1990

1990 MEDIUM DUTY TRUCK AND INCOMPLETE VEHICLE VIN SYSTEM

TYPICAL VIN 1GTM7D1E4LV556123

POSITION NO. 1 2 3 4 5 6 7 8 9 10 11 12 13 14 15 16 17

1 = U.S. BUILT
2 = CANADIAN BUILT
J = JAPAN BUILT

0 = GENERAL MOTORS
G = SUZUKI

MAKE
SERIES
BODY TYPE
CHECK DIGIT
PRODUCTION SEQUENCE NO.
PLANT (SEE REVERSE SIDE)
L = 1990 MODEL YEAR

SYNV/DRIVE SYSTEM
TRUCK LINE & CAB TYPE
ENGINE TYPE

4 **5** **6** **7** **8**

CODE	DRV. RANGE	DRV. RANGE (MI PER HOUR)	DRIVE SYST.
A	9,001-10,000	MYD	
B	10,001-14,000	MYD	
C	14,001-16,000	MYD	
D	14,001-16,000	AIR	
E	16,001-19,500	MYD	
F	16,001-19,500	AIR	
G	19,501-23,500	MYD	
H	19,501-23,500	AIR	
J	23,501-26,000	MYD	
K	23,501-26,000	AIR	
L	26,001-33,000	MYD	
M	26,001-33,000	AIR	
N	33,001-40,500	MYD	
P	33,001-40,500	AIR	
Q	40,501-48,500	MYD	
S	40,501-48,500	AIR	
T	48,501-58,000	AIR	
X	GLIDER KIT		

VIN System

The following information is provided for your information:

1. The total number of units is 100.

2. The total number of units is 100.

3. The total number of units is 100.

4. The total number of units is 100.

5. The total number of units is 100.

6. The total number of units is 100.

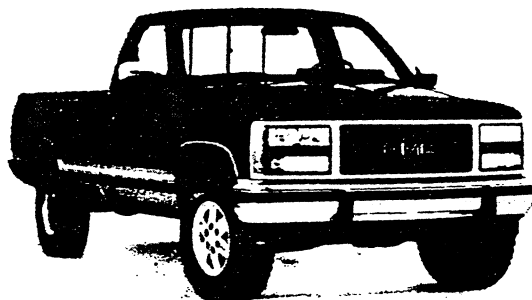
7. The total number of units is 100.

8. The total number of units is 100.

9. The total number of units is 100.

10. The total number of units is 100.

C/K/SIERRA PICKUP



CONTENTS

	<u>Page</u>
MODELS	2
CHEYENNE/SL TRIM	6
SCOTTSDALE SLX (RPO Z62) TRIM	7
SILVERADO/SLE (RPO YE9) TRIM	8
POWERTRAINS	9
STANDARD SUSPENSION (4X2)	15
OPTIONAL SUSPENSION (4X2)	16
STANDARD SUSPENSION (4X4)	17
OPTIONAL SUSPENSION (4X4)	18
WHEELS AND TIRES	19
FRAME/STEERING/BRAKES	23
ELECTRICAL	25
COOLING	26
DIMENSIONS	27
OPTIONS	29
COLOR COMBINATIONS	35
EXTERIOR COLORS	B
INTERIOR TRIM	C
SEATS	D
TRAILERING	E

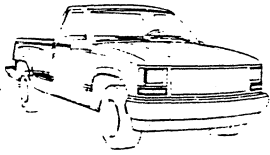
/K/SIERRA PICKUP

BY: Red Print Indicates Not Available in California

Bold Print Indicates Not Available w/High Altitude Emissions

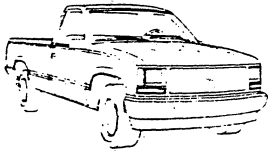
TWO-WHEEL DRIVE (C)

**C1500 4X2
REGULAR CAB
SPORTSIDE**



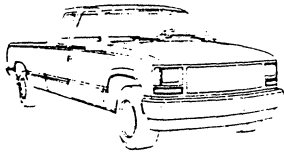
BOX (FT.)	GVWR (LBS.)	MAX. PAYLOAD (LBS.)	PASS. CAP. STD/OPT	AVAIL. TRIM	STD. ENGINE/TRANS	OPT. ENGINE/TRANS	MODEL NUMBER
6.5'	5600	1420	3.2	All	4.3L V6/M5	4.3L V6/A4/A3 5.0L V8/M5/A4/A3 5.7L V8/M5/A4	C10703/ E62

**C1500 4X2
REGULAR CAB
FLEETSIDE/WIDESIDE**



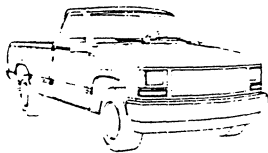
BOX (FT.)	GVWR (LBS.)	MAX. PAYLOAD (LBS.)	PASS. CAP. STD/OPT	AVAIL. TRIM	STD. ENGINE/TRANS	OPT. ENGINE/TRANS	MODEL NUMBER
6.5'	5600	1428	3.2	All	4.3L V6/M5	4.3L V6/A4/A3 5.0L V8/M5/A4/A3 5.7L V8/M5/A4	C10703/ E63
8'	5600	1261	3.2	All	4.3L V6/M5	4.3L V6/M4/A4/A3 5.0L V8/M5/A4/A3 5.7L V8/M4/M5/A4	C10903/ E63
8'	6100	1742	3.2	All	4.3L V6/M5	4.3L V6/M4/A4/A3 5.0L V8/M5/A4/A3 5.7L V8/M4/M5/A4	C10903/ E63/ F44

**C1500 4X2
EXTENDED CAB
FLEETSIDE/CLUB
COUPE WIDESIDE**



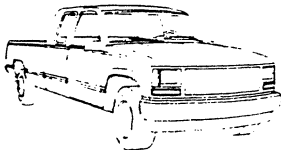
BOX (FT.)	GVWR (LBS.)	MAX. PAYLOAD (LBS.)	PASS. CAP. STD/OPT	AVAIL. TRIM	STD. ENGINE/TRANS	OPT. ENGINE/TRANS	MODEL NUMBER
6.5'	6200	1865	3.5.6	All	4.3L V6/M5	4.3L V6/M4/A4 5.0L V8/M5/A4 5.7L V8/M4/M5/A4	C10753/ E63
8'	6200	1525	3.5.6	All	4.3L V6/M5	4.3L V6/M4/A4/A3 5.0L V8/M5/A4/A3 5.7L V8/M4/M5/A4	C10953/ E63

**C2500 4X2
REGULAR CAB
FLEETSIDE/WIDESIDE**



BOX (FT.)	GVWR (LBS.)	MAX. PAYLOAD (LBS.)	PASS. CAP. STD/OPT	AVAIL. TRIM	STD. ENGINE/TRANS	OPT. ENGINE/TRANS	MODEL NUMBER
8'	7200	2694	3.2	All	4.3L V6/M5	4.3L V6/M4/A4/A3 5.0L V8/M5/A4/A3 5.7L V8/M4/M5/A4	C20903/ E63
8'	8600	3661	3.2	All	4.3L V6/M4	4.3L V6/A3 5.7L V8/M4/A3	C20903/ E63/C6P
8'	8600	3119	3.2	All	6.2L V8/M4	6.2L V8/A3	C20903/ E63/B3J/ C6P

**C2500 4X2
EXTENDED CAB
FLEETSIDE/CLUB
COUPE WIDESIDE**



BOX (FT.)	GVWR (LBS.)	MAX. PAYLOAD (LBS.)	PASS. CAP. STD/OPT	AVAIL. TRIM	STD. ENGINE/TRANS	OPT. ENGINE/TRANS	MODEL NUMBER
6.5'	7200	2511	3.5.6	All	4.3L V6/M5	4.3L V6/M4/A4 5.0L V8/M5/A4 5.7L V8/M5/M4/A4	C20753/ E63
8'	7200	2418	3.5.6	All	4.3L V6/M5	4.3L V6/M4/A4/A3 5.0L V8/M5/A4/A3 5.7L V8/M4/M5/A4	C20953/ E63
8'	8600	3385	3.5.6	All	4.3L V6/M4	4.3L V6/A3 5.7L V8/M4/A3	C20953/ E63/C6P
8'	8600	2857	3.5.6	All	6.2L V8/M4	6.2L V8/A3	C20953/ E63/B3J/ C6P

**C1500 REGULAR CAB
SPORTSIDE**

The Sportside features a specialized cargo bed design with a fully-rectangular cargo box on the inside, and fiberglass side panels flanked by running board steps on the outside.

**C1500 REGULAR CAB
FLEETSIDE/WIDESIDE**

The C1500 Fleetside/Wideside is the most popular full-size model. It's available with a 6.5-foot or 8-foot cargo box, a variety of powertrains and GVWR's to meet the needs of today's truck buyer.

**C1500 EXTENDED CAB
FLEETSIDE/CLUB COUPE
WIDESIDE**

The C1500 Extended Cab/Club Coupe model offers a cab design with a generous amount of secure in-cab storage behind the front seat and a choice of a 6.5-foot or 8-foot cargo box. An optional three passenger rear seat is available.

**C2500 REGULAR CAB
FLEETSIDE/WIDESIDE**

The C2500 Regular Cab offers increased available GVWR capacity over the C1500 series.

**C2500 EXTENDED CAB
FLEETSIDE/CLUB COUPE
WIDESIDE**

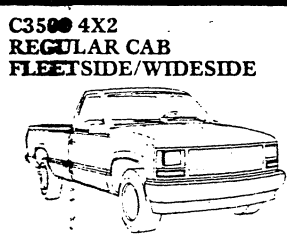
The C2500 Extended Cab/Club Coupe offers the versatility of extended cab design coupled with the GVWR availability of the C2500 series. It is available with a 6.5-foot or 8-foot cargo box.

¹ Based on model weight. Total available for equipment and cargo.

KEY: Red Print Indicates Not Available in California Bold Print Indicates Not Available w/High Altitude Emissions

TWO-WHEEL DRIVE (C) (Cont.)

C3500 REGULAR CAB FLEETSIDE/WIDESIDE
The C3500 Regular Cab Fleetside/Wideside offers high GVWR availability and power, including the 7.4-liter V8.



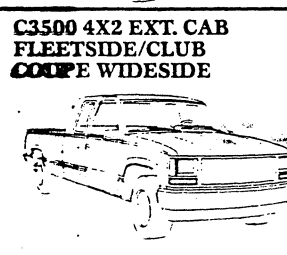
BOX (FT.)	GVWR (LBS.)	MAX ¹ PAYLOAD (LBS.)	PASS. CAP. STD/OPT	AVAIL. TRIM	STD. ENGINE/TRANS	OPT. ENGINE/TRANS	MODEL NUMBER
8'	8600	3264	3, 2	All	7.4L V8/M4	7.4L V8/A3	C30903/ E63

C3500 REGULAR CAB BIG DOOLEY/HEAVY HAULER w/DUAL REAR WHEELS (R05)
The C3500 Big Dooley/Heavy Hauler option offers the highest GVWR available in the C/K pickup series. The Big Dooley/Heavy Hauler is equipped with dual rear wheels and plastic rear fender extensions.



BOX (FT.)	GVWR (LBS.)	MAX ¹ PAYLOAD (LBS.)	PASS. CAP. STD/OPT	AVAIL. TRIM	STD. ENGINE/TRANS	OPT. ENGINE/TRANS	MODEL NUMBER
8'	10,000	4588	3, 2	All	5.7L V8/M4	5.7L V8/A3 7.4L V8/M4/A3	C30903/ E63/R05
8'	10,000	4067	3, 2	All	6.2L V8/M4	6.2L V8/A3	C30903 E63/B3J/ R05

C3500 EXTENDED CAB FLEETSIDE/CLUB COUPE WIDESIDE
The C3500 Extended Cab/Club Coupe offers the versatility of extended cab design coupled with the GVWR capacity and engine availability of the C3500 series.



BOX (FT.)	GVWR (LBS.)	MAX ¹ PAYLOAD (LBS.)	PASS. CAP. STD/OPT	AVAIL. TRIM	STD. ENGINE/TRANS	OPT. ENGINE/TRANS	MODEL NUMBER
8'	8600	3007	3, 5, 6	All	7.4L V8/M4	7.4L V8/A3	C30953/ E63

C3500 EXTENDED CAB BIG DOOLEY/CLUB COUPE HEAVY HAULER w/DUAL REAR WHEELS (R05)
The C3500 Extended Cab Big Dooley/Club Coupe Heavy Hauler w/Dual Rear Wheels offers the versatility of extended cab design, high GVWR, as well as dual rear wheels and plastic rear fender extensions.



BOX (FT.)	GVWR (LBS.)	MAX ¹ PAYLOAD (LBS.)	PASS. CAP. STD/OPT	AVAIL. TRIM	STD. ENGINE/TRANS	OPT. ENGINE/TRANS	MODEL NUMBER
8'	10,000	4332	3, 5, 6	All	5.7L V8/M4	5.7L V8/A3 7.4L V8/M4/A3	C30953/ E63/R05
8'	10,000	3788	3, 5, 6	All	6.2L V8/M4	6.2L V8/A3	C30953/ E63/R05/ B3J

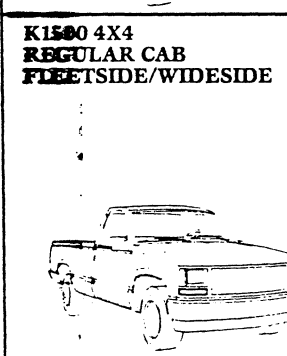
FOUR-WHEEL DRIVE (K)

K1500 REGULAR CAB SPORTSIDE
The Sportside features a specialized cargo bed design with a fully-rectangular cargo box on the inside, and fiberglass side panels flanked by running board steps on the outside.



BOX (FT.)	GVWR (LBS.)	MAX ¹ PAYLOAD (LBS.)	PASS. CAP. STD/OPT	AVAIL. TRIM	STD. ENGINE/TRANS	OPT. ENGINE/TRANS	MODEL NUMBER
6.5'	5600	1019	3, 2	All	4.3L V6/M5	4.3L V6/M4/A4/A3 5.0L V8/M5/A4/A3 5.7L V8/M4/M5/A4	K10703/ E62
6.5'	6100	1495	3, 2	All	4.3L V6/M5	4.3L V6/M4/A4/A3 5.0L V8/M5/A4/A3 5.7L V8/M4/M5/A4	K10703/ E62/ F44

K1500 REGULAR CAB FLEETSIDE/WIDESIDE
The K1500 Fleetside/Wideside is the most popular full-size model. It's available with a 6.5-foot or 8-foot cargo box, a variety of powertrains and GVWRs.



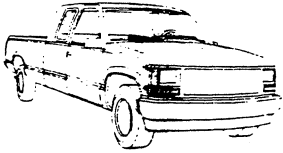
BOX (FT.)	GVWR (LBS.)	MAX ¹ PAYLOAD (LBS.)	PASS. CAP. STD/OPT	AVAIL. TRIM	STD. ENGINE/TRANS	OPT. ENGINE/TRANS	MODEL NUMBER
6.5'	5600	1027	3, 2	All	4.3L V6/M5	4.3L V6/M4/A4/A3 5.0L V8/M5/A4/A3 5.7L V8/M4/M5/A4	K10703/ E63
6.5'	6100	1503	3, 2	All	4.3L V6/M5	4.3L V6/M4/A4/A3 5.0L V8/M5/A4/A3 5.7L V8/M4/M5/A4	K10703/ E63/ F44
8'	5600	881	3, 2	All	4.3L V6/M5	4.3L V6/M4/A4/A3 5.0L V8/M5/A4/A3 5.7L V8/M4/M5/A4	K10903/ E63
8'	6100	1357	3, 2	All	4.3L V6/M5	4.3L V6/M4/A4/A3 5.0L V8/M5/A4/A3 5.7L V8/M4/M5/A4	K10903/ E63/ F44

¹Based on model weight. Total available for equipment and cargo.

KEY: Red Print Indicates Not Available in California Bold Print Indicates Not Available w/High Altitude Emissions

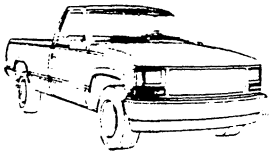
FOUR-WHEEL DRIVE (K) (Cont.)

K1500 4X4 EXTENDED CAB FLEETSIDE/CLUB COUPE WIDESIDE



BOX (FT.)	GVWR RANGE (LBS.)	MAX. PAYLOAD (LBS.)	PASS. CAP. STD/OPT	AVAIL. TRIM	STD. ENGINE/TRANS	OPT. ENGINE/TRANS	MODEL NUMBER
6.5'	6200	1292	3, 5, 6	All	4.3L V6/M5	4.3L V6/M4/A4 5.0L V8/M5/A4 5.7L V8/M4/M5/A4	K10753/ E63
6.5'	6600	1616	3, 5, 6	All	4.3L V6/M5	4.3L V6/M4/A4 5.0L V8/M5/A4 5.7L V8/M4/M5/A4	K10753/ E63/F44
8'	6200	1145	3, 5, 6	All	4.3L V6/M5	4.3L V6/M4/A4/A3 5.0L V8/M5/A4/A3 5.7L V8/M4/M5/A4	K10953/ E63
8'	6600	1469	3, 5, 6	All	4.3L V6/M5	4.3L V6/M4/A4/A3 5.0L V8/M5/A4/A3 5.7L V8/M4/M5/A4	K10953/ E63/ F44

K2500 4X4 REGULAR CAB FLEETSIDE/WIDESIDE



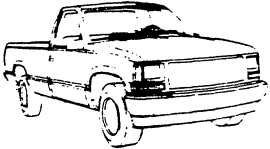
BOX (FT.)	GVWR RANGE (LBS.)	MAX. PAYLOAD (LBS.)	PASS. CAP. STD/OPT	AVAIL. TRIM	STD. ENGINE/TRANS	OPT. ENGINE/TRANS	MODEL NUMBER
8'	7200	2384	3, 2	All	4.3L V6/M5	4.3L V6/M4/A4/A3 5.0L V8/M5/A4/A3 5.7L V8/M4/M5/A4	K20903/ E63
8'	8600	3393	3, 2	All	4.3L V6/M4	4.3L V6/M4/A3 5.7L V8/M4/A3	K20903/ E63/C6P
8'	8600	2917	3, 2	All	6.2L V8/M4	6.2L V8/A3	K20903/ E63/B3J/ C6P

K2500 4X4 EXTENDED CAB FLEETSIDE/CLUB COUPE WIDESIDE



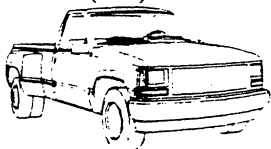
BOX (FT.)	GVWR RANGE (LBS.)	MAX. PAYLOAD (LBS.)	PASS. CAP. STD/OPT	AVAIL. TRIM	STD. ENGINE/TRANS	OPT. ENGINE/TRANS	MODEL NUMBER
6.5'	7200	2207	3, 5, 6	All	4.3L V6/M5	4.3L V6/M4/A4 5.0L V8/M5/A4 5.7L V8/M4/M5/A4	K20753/ E63
8'	7200	2108	3, 5, 6	All	4.3L V6/M5	4.3L V6/M4/A4/A3 5.0L V8/M5/A4/A3 5.7L V8/M4/M5/A4	K20953/ E63
8'	8600	3117	3, 5, 6	All	4.3L V6/M4	4.3L V6/A3 5.7L V8/M4/A3	K20953/ E63/C6P
8'	8600	2642	3, 5, 6	All	6.2L V8/M4	6.2L V8/A3	K20953/ E63/B3J/ C6P

K3500 4X4 REGULAR CAB FLEETSIDE/WIDESIDE



BOX (FT.)	GVWR RANGE (LBS.)	MAX. PAYLOAD (LBS.)	PASS. CAP. STD/OPT	AVAIL. TRIM	STD. ENGINE/TRANS	OPT. ENGINE/TRANS	MODEL NUMBER
8'	8600	2906	3, 2	All	7.4L V8/M4	7.4L V8/A3	K30903/ E63

K3500 4X4 REGULAR CAB BIG DOOLEY/ HEAVY HAULER w/DUAL REAR WHEELS (R05)



BOX (FT.)	GVWR RANGE (LBS.)	MAX. PAYLOAD (LBS.)	PASS. CAP. STD/OPT	AVAIL. TRIM	STD. ENGINE/TRANS	OPT. ENGINE/TRANS	MODEL NUMBER
8'	10,000	4433	3, 2	All	5.7L V8/M4	5.7L V8/A3 7.4L V8/M4/A3	K30903/ E63/R05
8'	10,000	4067	3, 2	All	6.2L V8/M4	6.2L V8/A3	K30903/ E63/B3J/ R05

K1500 EXTENDED CAB FLEETSIDE/CLUB COUPE WIDESIDE

The K1500 Extended Cab/Club Coupe offers a cab design with a generous amount of secure in-cab storage behind the front seat and a choice of a 6.5-foot or an 8-foot cargo box. An optional three passenger rear seat is available.

K2500 REGULAR CAB FLEETSIDE/WIDESIDE

The K2500 Regular Cab offers increased available GVWR capacity over the K1500 series.

K2500 EXTENDED CAB FLEETSIDE/CLUB COUPE WIDESIDE

The K2500 Extended Cab/Club Coupe offers the versatility of extended cab design coupled with the GVWR availability of the K2500 series. It is available with a 6.5-foot or 8-foot cargo box.

K3500 REGULAR CAB FLEETSIDE/WIDESIDE

The K3500 Regular Cab Fleetside/Wideside offers high GVWR availability and power, including the 7.4-liter V8.

K3500 REGULAR CAB BIG DOOLEY/HEAVY HAULER w/DUAL REAR WHEELS (R05)

The K3500 Big Dooley/Heavy Hauler w/Dual Rear Wheels option offers the highest GVWR available in the K pickup series. The Big Dooley/Heavy Hauler is equipped with dual rear wheels and plastic rear fender extensions.

Based on model weight. Total available for equipment and cargo

KEY: Red Print Indicates Not Available in California

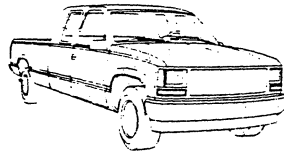
Bold Print Indicates Not Available w/High Altitude Emissions

FOUR-WHEEL DRIVE (K) (Cont.)

K3500 EXTENDED CAB FLEETSIDE/CLUB COUPE WIDESIDE

The K3500 Extended Cab/Club Coupe offers the versatility of extended cab design coupled with the GVWR and engine availability of the K3500 series.

K3500 4X4 EXT. CAB FLEETSIDE/CLUB COUPE WIDESIDE

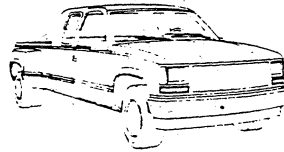


BOX (FT.)	GVWR (LBS.)	MAX. PAYLOAD (LBS.)	PASS. CAP. STD/OPT	AVAIL. TRIM	STD. ENGINE/TRANS	OPT. ENGINE/TRANS	MODEL NUMBER
8'	8600	2628	3, 5, 6	All	7.4L V8/M4	7.4L V8/A3	K30953/E63

K3500 EXT. CAB BIG DOOLEY/CLUB COUPE HEAVY HAULER w/DUAL REAR WHEELS (R05)

The K3500 Extended Cab Big Dooley/Club Coupe Heavy Hauler w/Dual Rear Wheels option offers the versatility of extended cab design, high GVWR, as well as dual rear wheels and plastic rear fender extensions.

K3500 4X4 EXT. CAB BIG DOOLEY/CLUB COUPE HEAVY HAULER w/DUAL REAR WHEELS (R05)



BOX (FT.)	GVWR (LBS.)	MAX. PAYLOAD (LBS.)	PASS. CAP. STD/OPT	AVAIL. TRIM	STD. ENGINE/TRANS	OPT. ENGINE/TRANS	MODEL NUMBER
8'	10,000	4154	3, 5, 6	All	5.7L V8/M4	5.7L V8/A3	K30953/E63/R05
8'	10,000	3788	3, 5, 6	All	6.2L V8/M4	6.2L V8/A3	K30953/E63/R05

* Based on model weight. Total available for equipment and cargo.

C/K/SIERRA PICKUP TRIM LEVELS

CHEYENNE/SL

The Cheyenne/SL is the standard trim level available in the C/K/Sierra Pickup line. It offers a high level of equipment designed to meet the needs of the full-size pickup buyer.

SCOTTSDALE/SLX (RPO Z62)

The optional Scottsdale/SLX trim level offers increased comfort and convenience features compared to the standard trim level.

SILVERADO/SLE (RPO YE9)

The optional Silverado/SLE trim level emphasizes luxury and style. It is the top-of-the-line trim level for the buyer demanding maximum comfort and convenience in a full-size pickup.

CHEYENNE/SL

The Cheyenne/SL trim level is the standard trim level of the C/K/Sierra series. It is designed to offer truck buyers a high level of standard features when they purchase a standard-level truck.

The following features are standard:



Some equipment shown may be optional or extra cost.

POWERTRAIN/CHASSIS

- 4.3-liter Vortec V6 engine with Electronic Fuel Injection (EFI) is standard on C/K1500 and 7200-lb. GVWR C/K2500 series pickups. It produces 160 net horsepower @ 4000 rpm and 235 lb. ft. of net torque @ 2400 rpm.
- A Heavy-Duty version of the 4.3-liter V6 engine with Electronic Fuel Injection (EFI) is now standard on C/K2500 series pickups at 8600-lb. GVWR. It produces 150 net horsepower @ 4000 rpm and 230 lb. ft. of net torque @ 2400 rpm.
- 7.4-liter V8 engine with Electronic Fuel Injection (EFI) is standard on C/K3500 series single rear wheel model pickups. It produces 230 net horsepower @ 3600 rpm and 385 lb. ft. of net torque @ 1600 rpm.
- A 5.7-liter V8 engine with Electronic Fuel Injection (EFI) is standard on C/K3500 series pickups with R05 dual rear wheels. It produces 190 net horsepower @ 4000 rpm and 300 lb. ft. of net torque @ 2400 rpm.

- 6.2-liter V8 diesel engine with mechanical fuel injection is available with B3J diesel equipment (see Powertrains for details).
- Single electric low-note horn.
- Manual transmission with floor-mounted shift lever (4-speed or 5-speed depending on model; see Powertrains section for details).
- Front suspension is an independent design with computer-selected coil springs on 2-wheel drive models, and an independent design with torsion bar on 4-wheel drive models.
- 1.90-inch diameter front stabilizer bar.
- Rear suspension is a leaf spring design with counter-angled rear shocks.

- Power-assisted brakes; front disc, rear drum.
- Rear wheel anti-lock braking system.
- Power steering.
- Heavy-duty battery with 630 CCA is standard on all gasoline engine models.
- Two 570 CCA batteries are standard on all diesel engine models.
- 85 amp alternator.
- Frame is an all-welded ladder-type with channel design and boxed front-end section.
- Rubber-bushed cab mounts isolate road noise and reduce vibrations.
- 25.0-gallon (approx.) fuel tank is standard on C/K10703, C/K10753 and C/K20753 models.
- A 34.0-gallon (approx.) fuel tank is standard on all models except C/K10703, C/K10753 and C/K20753 models.

EXTERIOR

- Front chromed bumper (a rear bumper is available as an option only; see Options page for details).
- Molded plastic grille painted light argent with dark argent air intake areas.
- Halogen headlamps.
- Silver painted steel wheels with black hub ornament. (Wheel size varies with model. See Suspension and Wheels and Tires for details.)

- Four steel-belted radial tires (see Wheels and Tires for size and type. Spare tire and carrier are optional on C/K 2500 and 3500 models).
- Full-size spare tire and wheel (C/K1500 models only).
- Wheel-type spare tire carrier mounted under frame at rear (C/K1500 models only).

- RH and LH fixed mirrors with adjustable heads, black finish. Mirror head size is 6" x 4 1/2".
- All-welded pickup box with double wall construction and extensive corrosion protection throughout.
- Two front tow hooks (4-wheel drive models only).

INTERIOR

- RH and LH padded armrests integral w/door panels. Door panels are grained molded plastic.
- 3-passenger all-vinyl trim front bench seat with folding backrest.
- RH coat hook. Extended Cab/Club Coupe model adds LH coat hook.
- Dark gray door sill plate.
- Dome Lamp with switch in LH door jamb.
- Floor covering consists of embossed black rubber mats.
- Cigarette lighter.
- Intermittent wiper system.

- Glove box with latched door and beverage holder.
- Tinted glass on all windows.
- Padded, color-keyed RH and LH visors.
- Gauges include speedometer, odometer, fuel level, voltmeter, temperature and oil pressure.
- 4-spoke steering wheel.
- 10-inch rearview mirror.
- Vinyl headliner matches retainer moldings.
- Deluxe heater.

- Extended Cab/Club Coupe models have cab rear upper, lower and side trim panels and a molded cloth color-keyed headliner with matching retainer moldings.
- Insulation on dash panel, cowl top and sides, and doors. Extended Cab/Club Coupe models have additional insulation on rear quarter and back panels, and on floor coverings. Extra insulation is provided for models with diesel engines.
- Chevrolet models feature an AM radio with fixed mast antenna.
- GMC models feature an electronically-tuned AM/FM stereo radio with seek-scan and digital clock with fixed mast antenna.

SCOTTSDALE/SLX (RPO Z62)

The Scottsdale/SLX trim level is an optional trim level for the C/K/Sierra series. It is designed to offer **track** buyers an increased level of **comfort** and convenience features **compared** to the standard Cheyenne/SL trim level.

The following features are standard. Bold type denotes equipment in addition to or replacing that of the Cheyenne/SL trim level:



Some equipment shown may be optional or extra cost.

POWERTRAIN/CHASSIS

- 4.3-liter Vortec V6 engine with **Electronic Fuel Injection (EFI)** is standard on C/K1500 and 7200-lb. GVWR C/K2500 series pickups. It produces 160 net horsepower @ 4000 rpm and 235 lb. ft. of net torque @ 2400 rpm.
- A Heavy-Duty version of the **4.3-liter V6 engine with Electronic Fuel Injection (EFI)** is now standard on C/K2500 series pickups at 8600-lb. GVWR. It produces 150 net horsepower @ 4000 rpm and 230 lb. ft. of net torque @ 2400 rpm.
- 7.4-liter V8 engine with **Electronic Fuel Injection (EFI)** is standard on C/K3500 series single rear wheel model pickups. It produces 230 net horsepower @ 3600 rpm and 385 lb. ft. of net torque @ 1600 rpm.
- A 5.7-liter V8 engine with **Electronic Fuel Injection (EFI)** is standard on C/K3500 series pickups with R05 dual rear wheels. It produces 190 net horsepower @ 4000 rpm and 300 lb. ft. of net torque @ 2400 rpm.
- 6.2-liter V8 diesel engine with mechanical fuel injection is available with B3J diesel equipment (see Powertrains for details).
- Single electric low-note horn. **Additional electric high-note horn.**
- Manual transmission with floor-mounted shift lever (4-speed or 5-speed depending on model; see Powertrains section for details).
- Front suspension is an independent design with computer-selected coil springs on 2-wheel drive models, and an independent design with torsion bar on 4-wheel drive models.
- 1.00-inch diameter front stabilizer bar.
- Rear suspension is a leaf spring design with counter-angled rear shocks.
- Power-assisted brakes; front disc, rear drum.
- Rear wheel anti-lock braking system.
- Power steering.
- Heavy-duty battery with 630 CCA is standard on all gasoline engine models.
- Two 570 CCA batteries are standard on all diesel engine models.
- 85 amp alternator.
- Frame is an all-welded ladder-type with channel design and boxed front-end section.
- Rubber-bushed cab mounts isolate road noise and reduce vibrations.
- 25.0-gallon (approx.) fuel tank is standard on C/K10703, C/K10753 and C/K20753 models.
- A 34.0-gallon (approx.) fuel tank is standard on all models except C/K10703, C/K10753 and C/K20753 models.

EXTERIOR

- Front chromed bumper (a rear bumper is available as an option only; see Options page for details).
- **Scottsdale/SLX nameplates.**
- **Deluxe front appearance package** consisting of a dark argent grille with bright trim and composite halogen headlamps.
- Black body side moldings. **Black wheel opening lip moldings (Except K2500 C6P models, dual rear wheel models and Sportside models).**
- **Rally wheels (except R05 models). (Wheel size varies with model. See Suspension and Wheels and Tires for details.)**
- Four steel-belted radial tires (see Wheels and Tires for size and type. Spare tire and carrier are optional on C/K 2500 and 3500 models).
- Full-size spare tire and wheel (C/K1500 models only).
- Winch-type spare tire carrier mounted under frame at rear (C/K1500 models only).
- RH and LH fixed mirrors with adjustable heads, black finish. Mirror head size is 6" x 4 1/2".
- All-welded pickup box with double wall construction and extensive corrosion protection throughout.
- Two front tow hooks (4-wheel drive models only).

INTERIOR

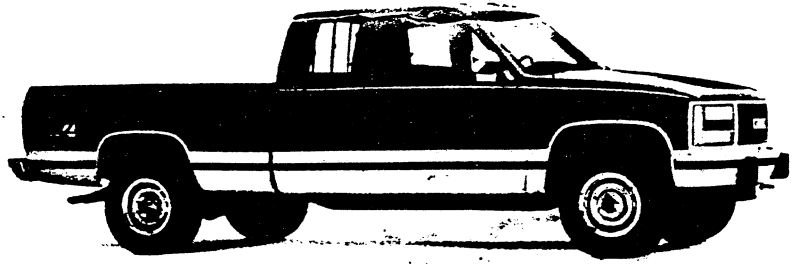
- RH and LH armrests integral w/door panels. **Door panels are color-keyed grained molded plastic with soft vinyl trim, map pocket and Scottsdale/SLX emblems.**
- 3-passenger **standard cloth trim** front bench seat with folding backrest.
- RH coat hook and LH coat hook.
- **Color-keyed door sill plate.**
- Dome Lamp with switch in LH and RH door jambs.
- Floor covering consists of **color-keyed embossed rubber mats.**
- Cigarette lighter.
- Intermittent wiper system.
- Tinted glass on all windows.
- Padded, color-keyed RH and LH sunshades.
- Gages include speedometer, odometer, fuel level, voltmeter, temperature and oil pressure.
- **Custom 4-spoke steering wheel.**
- 10-inch rearview mirror.
- Vinyl headliner matches retainer moldings.
- Deluxe heater.
- **Full width storage tray behind seat on floor.**
- **Color-keyed cloth headliner. Regular Cab and Extended Cab/Club Coupe models include matching retainer moldings.**
- **Color-keyed door pillar and roof side panels.**
- Insulation on dash panel, cowl top and sides and doors. Extended Cab/Club Coupe models have additional insulation on rear quarter and back panels and on floor coverings, **plus insulation on headliners.** Extra insulation is provided for models with diesel engines.
- Chevrolet models feature an AM radio with fixed mast antenna.
- GMC models feature an electronically-tuned AM/FM stereo radio with seek-scan and digital clock with fixed mast antenna.

SILVERADO/SLE

(RPO YE9)

The Silverado/SLE trim level is an optional trim level for the C/K/Sierra series. It is designed to offer truck buyers an increased level of comfort and convenience features compared to the standard Cheyenne/SL trim level and the optional Scottsdale/SLX levels.

The following features are standard. Bold type denotes equipment in addition to or replacing that of the Scottsdale/SLX trim level:



Some equipment shown may be optional or extra cost.

POWERTRAIN/CHASSIS

- 4.3-liter Vortec V6 engine with Electronic Fuel Injection (EFI) is standard on C/K1500 and 7200-lb. GVWR C/K2500 series pickups. It produces 160 net horsepower @ 4000 rpm and 235 lb. ft. of net torque @ 2400 rpm.
- A Heavy-Duty version of the 4.3-liter V6 engine with Electronic Fuel Injection (EFI) is now standard on C/K2500 series pickups at 8600-lb. GVWR. It produces 150 net horsepower @ 4000 rpm and 230 lb. ft. of net torque @ 2400 rpm.
- 7.4-liter V8 engine with Electronic Fuel Injection (EFI) is standard on C/K3500 series single rear wheel model pickups. It produces 230 net horsepower @ 3600 rpm and 385 lb. ft. of net torque @ 1600 rpm.
- A 5.7-liter V8 engine with Electronic Fuel Injection (EFI) is standard on C/K3500 series pickups with R05 dual rear wheels. It produces 190 net horsepower @ 4000 rpm and 300 lb. ft. of net torque @ 2400 rpm.
- 6.2-liter V8 diesel engine with mechanical fuel injection is available with B3J diesel equipment (see Powertrains for details).
- Single electric low-note horn. Additional electric high-note horn.
- Manual transmission with floor-mounted shift lever (4-speed or 5-speed depending on model, see Powertrains section for details).
- Front suspension is an independent design with computer-selected coil springs on 2-wheel drive models, and an independent design with torsion bar on 4-wheel drive models.
- 1.00-inch diameter front stabilizer bar.
- Rear suspension is a leaf spring design with counter-angled rear shocks.
- Power-assisted brakes; front disc, rear drum.
- Rear wheel anti-lock braking system.
- Power steering.
- Heavy-duty battery with 630 CCA is standard on all gasoline engine models.
- Two 570 CCA batteries are standard on all diesel engine models.
- 85 amp alternator.
- Frame is an all-welded ladder-type with channel design and boxed front-end section.
- Rubber-bushed cab mounts isolate road noise and reduce vibrations.
- 25.0-gallon (approx.) fuel tank is standard on C/K10703, C/K10753 and C/K20753 models.
- A 34.0-gallon (approx.) fuel tank is standard on all models except C/K10703, C/K10753 and C/K20753 models.

EXTERIOR

- Front chromed bumper (a rear bumper is available as an option only; see Options page for details).
- Silverado/Sierra SLE nameplates.
- Deluxe front appearance package consisting of a dark argent grille with bright trim and composite halogen headlamps.
- Swing-out rear quarter windows standard on Extended Cab/Club Coupe models.
- Black plastic body side moldings with **bright trim**. Black wheel opening lip moldings (except K3500, K2500 C6P models, dual rear wheel models and Sport-side models).
- Rally wheels (except R05 models). (Wheel size varies with model. See Suspension and Wheels and Tires for details.)
- Four steel-belted radial tires (see Wheels and Tires for size and type. Spare tire and carrier are optional on C/K 2500 and 3500 models).
- Full-size spare tire and wheels (C/K1500 models only).
- Winch-type spare tire carrier mounted under frame at rear (C/K1500 models only).
- RH and LH fixed mirrors with adjustable heads, black finish. Mirror head size is 6" x 4 1/2".
- All-welded pickup box with double wall construction and extensive corrosion protection throughout.
- **Hood and cab-to-fender insulators.**
- Two front tow hooks (4-wheel drive models only).

INTERIOR

- RH and LH armrests integral w/door panels. **Door panels are two-toned soft vinyl over plastic trim and include map pocket, door closing assist straps and Silverado/SLE emblems.**
- 3-passenger with choice of **Custom Vinyl or Custom Cloth** front bench seat with folding backrest. (Extended Cab/Club Coupe models offer a choice of **Custom Vinyl or Custom Cloth split front bench seat with RH easy-entry feature**).
- RH coat hook and LH coat hook.
- Color-keyed door sill plate.
- Dome Lamp with switches in LH and RH door jambs.
- Floor covering consists of **color-keyed carpeting**.
- **Front and rear removable color-keyed floor mats (front only on regular cab).**
- Tinted glass on all windows.
- Padded, color-keyed RH and LH sunshades with **cloth covering, storage strap on LH unit and visor mirror on RH unit.**
- Gages include speedometer, odometer, fuel level, voltmeter, temperature and oil pressure.
- Custom 4-spoke steering wheel.
- 10-inch rearview mirror.
- Full width storage tray behind seat on floor.
- Cigarette lighter.
- Intermittent wiper system.
- Deluxe heater.
- Color-keyed cloth headliner. Regular Cab models include matching retainer moldings.
- Color-keyed door pillar and roof side panels.
- **Color-keyed carpet on cab back panel.**
- **Insulation on cab back panel.**
- Insulation on dash panel, cowl top and sides, and doors. Extended Cab/Club Coupe models have additional insulation on rear quarter and back panels and on floor coverings, plus insulation on headliners and on **Regular Cab back panels**. Extra insulation is provided for diesel models.
- Chevrolet models feature an AM radio with fixed mast antenna.
- GMC models feature an electronically-tuned AM/FM stereo radio with seek-scan and digital clock with fixed mast antenna.

POWERTRAINS

1990

C/K/SIERRA PICKUP

KEY: S Standard O Optional
— Not Offered

RED Not Available w/ California Emissions
BOLD Not Available w/High Altitude Emissions

H High Altitude Emissions Only
C California Emissions Only

MODEL	TRANSMISSION				AXLES						GVWR
	(MM4) MAN 4-SPD	(MM5) MAN 5-SPD	(MX1) AUTO 3-SPD	(MX0) AUTO 4-SPD	← ECONOMY →			POWER →			
					2.73	3.08	3.42	3.73	4.10	4.56	
C1500 REG. CAB SPORTSIDE C10703/E62											
C1500 REG. CAB FLEETSIDE/ WIDESIDE C10703/E63											
ENGINE											
4.3L V6 (LB4)		S				S	O				5600
				O		S	O ¹	H ²			
5.0L V8 (L03)				O		S	O				5600
5.7L V8 (L05)		S				S	O				5600
7.4L V8 (L19) (RPO B4U Only)			S			S	O	O ²			5600

¹Standard w/High Altitude Emissions ²Requires KC4 Eng. Oil Cooler

MODEL	TRANSMISSION				AXLES						GVWR
	(MM4) MAN 4-SPD	(MM5) MAN 5-SPD	(MX1) AUTO 3-SPD	(MX0) AUTO 4-SPD	← ECONOMY →			POWER →			
					2.73	3.08	3.42	3.73	4.10	4.56	
C1500 REG. CAB FLEETSIDE/ WIDESIDE C10903/E63											
ENGINE											
4.3L V6 (LB4)	O	S				S	O ⁴				5600 6100 ³ 5600
				O		S	O ¹	H ²			
5.0L V8 (L03)				O		S	O				5600 6100 ³ 5600
5.7L V8 (L05)		S				S	O				5600 6100 ³

¹Standard w/High Altitude Emissions ²Requires KC4 Eng. Oil Cooler ³Requires F44 H.D. Chassis ⁴N/A w/RPO VLA

MODEL	TRANSMISSION				AXLES						GVWR
	(MM4) MAN 4-SPD	(MM5) MAN 5-SPD	(MX1) AUTO 3-SPD	(MX0) AUTO 4-SPD	← ECONOMY →			POWER →			
					2.73	3.08	3.42	3.73	4.10	4.56	
C1500 EXTENDED CAB FLEETSIDE/CLUB COUPE WIDESIDE C10753/C10953/E63											
ENGINE											
4.3L V6 (LB4)	O					S	O ¹				6200
		S				S	O				
				O		S	O ¹	H ²			
5.0L V8 (L03)				O		S	O				6200
5.7L V8 (L05)		S				S	O				6200

¹Standard w/High Altitude Emissions ²Requires KC4 Eng. Oil Cooler ³Not Available C10753

MODEL	TRANSMISSION				AXLES						GVWR
	(MM4) MAN 4-SPD	(MM5) MAN 5-SPD	(MX1) AUTO 3-SPD	(MX0) AUTO 4-SPD	← ECONOMY →			POWER →			
					2.73	3.08	3.42	3.73	4.10	4.56	
C2500 REG. CAB FLEETSIDE/WIDESIDE C20903/E63											
ENGINE											
4.3L V6 (LB4)	O						S	O ^{1 2}			7200 8600 (C6P)
		S					S	O ^{1 2}			
				O			S	O ^{1 2}	O ¹		
									S ¹	O ¹	
									S ¹	O ¹	
5.0L V8 (L03)				O ⁴			S	O ³	O ³		7200
5.7L V8 (L05)		S					S	O ¹			7200 8600 (C6P)
				O			S	O ¹	O ¹		
							S	O ¹	O ¹		
				O				S ¹	O ¹	O ¹	
6.2L V8 DIESEL (LL4)	S							S	O		8600 (C6P)

¹Requires KC4 Eng. Oil Cooler ²Standard w/High Altitude Emissions ³Requires KC4 Eng. Oil Cooler w/C60 Air Cond. ⁴Standard w/California Emissions

1990
C/K/SIERRA PICKUP

POWERTRAINS

KEY: S Standard O Optional RED Not Available w/California Emissions H High Altitude Emissions Only
 —Not Offered BOLD Not Available w/High Altitude Emissions C California Emissions Only

MODEL	TRANSMISSION				AXLES						GVWR
	(MM4) MAN 4-SPD	(MM5) MAN 5-SPD	(MX1) AUTO 3-SPD	(MX0) AUTO 4-SPD	←ECONOMY→			POWER→			
C2500 EXTENDED CAB FLEETSIDE/CLUB COUPE WIDESIDE C20753/E63 C20953/E63					2.73	3.08	3.42	3.73	4.10	4.56	
ENGINE											
4.3L V6 (LB4)	O	—	—	—	—	—	S	O ^{1,3}	—	—	7200
	—	S	—	—	—	—	S	O ^{1,3}	—	—	
	—	—	—	O	—	—	S	O ^{1,3}	O ¹	—	
5.0L V8 (L03)	—	—	—	—	—	—	—	—	S ¹	O ¹	8600 ² (C6P)
	—	—	O	—	—	—	—	—	S ¹	O ¹	
5.7L V8 (L05)	—	—	—	—	—	—	S	O ⁴	O ⁴	—	7200
	—	S	—	—	—	—	S	O ¹	—	—	
	—	—	—	O	—	—	S	O ¹	O ¹	—	
6.2L V8 DIESEL (LL4)	—	—	—	—	—	—	—	—	S	O	8600 ² (C6P)
	—	S	—	—	—	—	—	—	S	O	
	—	—	O	—	—	—	—	—	S	O	

¹Requires KC4 Eng. Oil Cooler ²N/A w/C20753 ³Standard w/High Altitude Emissions ⁴w/C60 Air Conditioning Requires KC4 Eng. Oil Cooler and V02 H.D. Cooling

MODEL	TRANSMISSION				AXLES						GVWR
	(MM4) MAN 4-SPD	(MM5) MAN 5-SPD	(MX1) AUTO 3-SPD	(MX0) AUTO 4-SPD	←ECONOMY→			POWER→			
C3500 REG. CAB FLEETSIDE/ WIDESIDE C30903/E63 C3500 REG. CAB BIG DOOLEY/HEAVY HAULER C30903/E63 (R05)					2.73	3.08	3.42	3.73	4.10	4.56	
ENGINE											
5.7L V8 (L05)	S	—	—	—	—	—	—	—	S ¹	O ¹	10,000 (R05)
	—	—	O	—	—	—	—	—	S ²	O ²	
7.4L V8 (L19)	S	—	—	—	—	—	S	O	O ¹	—	8600
	—	—	O	—	—	—	S	O	O ¹	—	
	S	—	—	—	—	—	—	—	S	O ¹	
6.2L V8 DIESEL (LL4)	—	—	O ⁴	—	—	—	—	—	S	O ^{2,3}	10,000 (R05)
	S	—	—	—	—	—	—	—	S	O ³	

¹Requires KC4 Eng. Oil Cooler ²Requires KC4 Eng. Oil Cooler and V02 H.D. Cooling ³Requires 7.50-16D Tires ⁴Requires V02 H.D. Cooling

MODEL	TRANSMISSION				AXLES						GVWR
	(MM4) MAN 4-SPD	(MM5) MAN 5-SPD	(MX1) AUTO 3-SPD	(MX0) AUTO 4-SPD	←ECONOMY→			POWER→			
C3500 EXTENDED CAB FLEETSIDE/ CLUB COUPE WIDESIDE C30953/E63 C3500 EXT. CAB/CLUB COUPE BIG DOOLEY/HEAVY HAULER C30953/E63 (R05)					2.73	3.08	3.42	3.73	4.10	4.56	
ENGINE											
5.7L V8 (L05)	S	—	—	—	—	—	—	—	S ¹	O	10,000 (R05)
	—	—	O	—	—	—	—	—	S ²	O ^{1,4}	
7.4L V8 (L19)	S	—	—	—	—	—	S	O	O ¹	—	8600
	—	—	O	—	—	—	S	O	O ¹	—	
	S	—	—	—	—	—	—	—	S	O ¹	
6.2L V8 DIESEL (LL4)	—	—	O ⁵	—	—	—	—	—	S	O ²	10,000 (R05)
	S	—	—	—	—	—	—	—	S	O	

¹Requires KC4 Eng. Oil Cooler ²Requires KC4 Eng. Oil Cooler, V02 H.D. Cooling and 7.50-16D Tires ³Requires KC4 Eng. Oil Cooler and V02 H.D. Cooling ⁴Requires 7.50-16D Tires ⁵Requires V02 H.D. Cooling

MODEL	TRANSMISSION				AXLES						GVWR
	(MM4) MAN 4-SPD	(MM5) MAN 5-SPD	(MX1) AUTO 3-SPD	(MX0) AUTO 4-SPD	←ECONOMY→			POWER→			
K1500 REG. CAB SPORTSIDE (E62) K10703/E62 K1500 REG. CAB FLEETSIDE/WIDESIDE K10703/E63					2.73	3.08	3.42	3.73 ³	4.10	4.56	
ENGINE											
4.3L V6 (LB4)	O	—	—	—	—	—	S ¹	O ²	—	—	5600/ 6100 ⁴
	—	S	—	—	—	—	S ¹	O ²	—	—	
5.0L V8 (L03)	—	—	—	—	—	—	—	—	—	—	5600/ 6100 ⁴
	—	—	O	—	—	—	S ¹	O	—	—	
5.7L V8 (L05)	—	S	—	—	—	—	S	O ²	—	—	5600/ 6100 ⁴
	—	—	—	O	—	—	S	O ²	—	—	

¹Not Available with LT265-75R16C Tires ²Requires KC4 Eng. Oil Cooler ³Not Available @ 6100 GVWR ⁴Requires F44 H.D. Chassis

KEY: S Standard O Optional
 — Not Offered

RED Not Available w/California Emissions
 BOLD Not Available w/High Altitude Emissions

H High Altitude Emissions Only
 C California Emissions Only

MODEL K1500 REG. CAB FLEETSIDE/WIDESIDE K10903/E63	TRANSMISSION				AXLES						GVWR
	(MM4) MAN 4-SPD	(MM5) MAN 5-SPD	(MX1) AUTO 3-SPD	(MX0) AUTO 4-SPD	← ECONOMY →			POWER →			
					2.73	3.08	3.42	3.73	4.10	4.56	
ENGINE											
4.3L V6 (LBA)	O	—	—	—	—	—	S ¹	O ²	—	—	5600 6100 ³
	—	S	—	—	—	—	S ¹	O ² 4	—	—	
	—	—	—	O	—	—	S ¹	O ²	—	—	
5.0L V8 (LBB)	—	—	—	—	—	—	—	—	—	—	5600 6100 ³
	—	—	—	O	—	—	S ¹	O	—	—	
	—	—	—	—	—	—	—	—	—	—	
5.7L V8 (LBS)	—	S	—	—	—	—	S	O ²	—	—	5600 6100 ³
	—	—	—	O	—	—	S	O ²	—	—	
	—	—	—	—	—	—	—	—	—	—	

¹Not Available with LT265/75R16C Tires ²Requires KC4 Eng. Oil Cooler ³Requires F44 H.D. Chassis ⁴Not Available with RPO VLA

MODEL K1500 EXTENDED CAB FLEETSIDE/CLUB COUPE WIDESIDE K10753/E63 K10953/E63	TRANSMISSION				AXLES						GVWR
	(MM4) MAN 4-SPD	(MM5) MAN 5-SPD	(MX1) AUTO 3-SPD	(MX0) AUTO 4-SPD	← ECONOMY →			POWER →			
					2.73	3.08	3.42	3.73	4.10	4.56	
ENGINE											
4.3L V6 (LBA)	O	—	—	—	—	—	S ¹	O ²	—	—	6200 6600 ³
	—	S	—	—	—	—	S ¹	O ²	—	—	
	—	—	—	O	—	—	S ¹	O ²	—	—	
5.0L V8 (LBB)	—	—	—	—	—	—	—	—	—	—	6200 6600 ³
	—	—	—	O	—	—	S ¹	O	H ⁴	—	
	—	—	—	—	—	—	—	—	—	—	
5.7L V8 (LBS)	—	S	—	—	—	—	S	O ²	H ² 4	—	6200 6600 ³
	—	—	—	O	—	—	S	O ²	H ² 4	—	
	—	—	—	—	—	—	—	—	—	—	

¹Not Available with LT265/75R16C Tires ²Requires KC4 Eng. Oil Cooler ³Requires F44 H.D. Chassis ⁴Not Available K10753

MODEL K2500 REG. CAB FLEETSIDE/WIDESIDE K20903/E63	TRANSMISSION				AXLES						GVWR
	(MM4) MAN 4-SPD	(MM5) MAN 5-SPD	(MX1) AUTO 3-SPD	(MX0) AUTO 4-SPD	← ECONOMY →			POWER →			
					2.73	3.08	3.42	3.73	4.10	4.56	
ENGINE											
4.3L V6 (LBA)	O	—	—	—	—	—	S	O ¹	—	—	7200
	—	S	—	—	—	—	S	O ¹	—	—	
	—	—	—	O	—	—	S	O ¹ 3	O ¹	—	
	—	—	—	—	—	—	—	—	—	—	
	S	—	—	—	—	—	—	—	S ¹	O ¹	
5.0L V8 (LBB)	—	—	—	—	—	—	—	—	—	—	7200
	—	—	—	O ⁴	—	—	S	O ²	O ²	—	
	—	—	—	—	—	—	—	—	—	—	
5.7L V8 (LBS)	—	S	—	—	—	—	S	O ¹	—	—	7200
	—	—	—	O	—	—	S	O ¹	O ¹	—	
	—	—	—	—	—	—	—	—	—	—	
	S ¹	—	—	—	—	—	S	O ¹	O ¹	—	
6.2L V8 DIESEL (LL4)	—	—	O	—	—	—	—	S ¹	O ¹	O ¹	8600 ¹ (C6P)
	—	—	—	—	—	—	—	—	—	—	
	S	—	—	—	—	—	—	S	O	—	

¹Requires KC4 Eng. Oil Cooler ²w/C60 Air, Requires KC4 Eng. Oil Cooler ³Standard w/High Altitude Emissions ⁴Standard with California Emissions

KEY: S Standard O Optional
— Not Offered

RED Not Available w/California Emissions
BOLD Not Available w/High Altitude Emissions

H High Altitude Emissions Only
C California Emissions Only

MODEL	TRANSMISSION				AXLES						GVWR
	(MM4) MAN 4-SPD	(MM5) MAN 5-SPD	(MX1) AUTO 3-SPD	(MX0) AUTO 4-SPD	← ECONOMY →			→ POWER →			
					2.73	3.08	3.42	3.73	4.10	4.56	
K2500 EXT. CAB FLEETSIDE/ CLUB COUPE WIDESIDE K20753/E63 K20953/E63											
ENGINE											
4.3L V6 (LB4)	O	—	—	—	—	—	S	O ¹	—	—	7200
	—	S	—	—	—	—	S	O ¹	—	—	
	—	—	—	O	—	—	S	O ^{1,3}	O ¹	—	
	—	—	—	—	—	—	—	—	—	—	
	S	—	—	—	—	—	—	—	S ¹	O ¹	8600 ⁵ (C6P)
5.0L V8 (L03)	—	—	—	—	—	—	—	—	—	—	7200
5.7L V8 (L05)	—	—	—	—	—	—	S	O ²	O ²	—	7200
	—	S	—	—	—	—	S	O ¹	—	—	
	—	—	—	O	—	—	S	O ¹	O ¹	—	
6.2L V8 DIESEL (LL4)	S	—	—	—	—	—	—	S	O	—	8600 ⁵ (C6P)
	—	—	O	—	—	—	—	S	O	O	
	—	—	—	—	—	—	—	—	—	—	

¹Requires KC4 Eng. Oil Cooler ²w/C60 Arr. Requires KC4 Eng. Oil Cooler ³Standard w/High Altitude Emissions ⁴Requires V02 H.D. Cooling ⁵N/A w/K20753

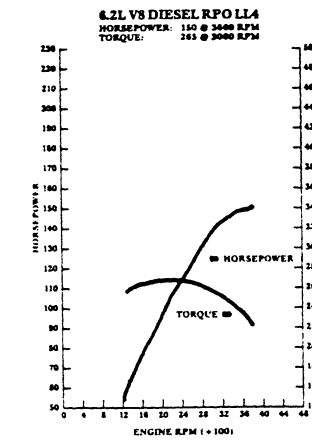
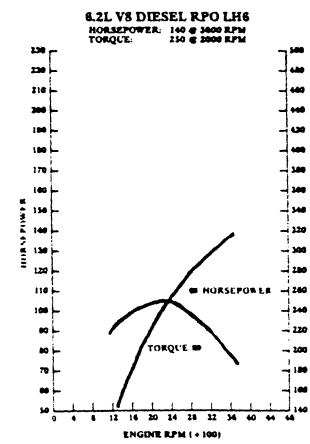
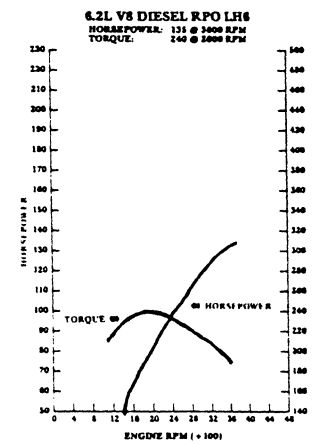
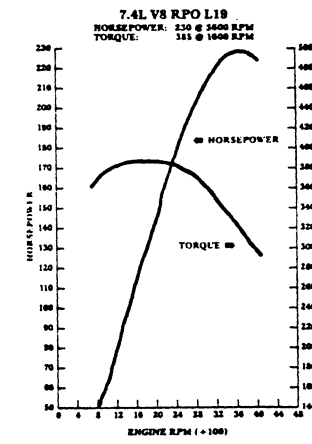
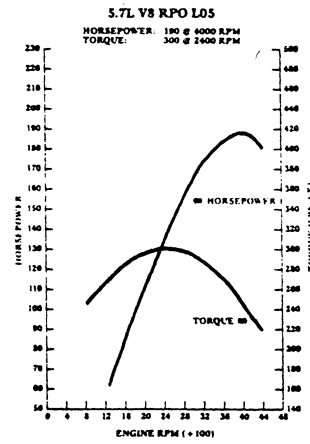
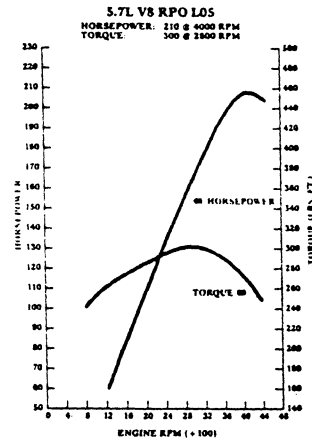
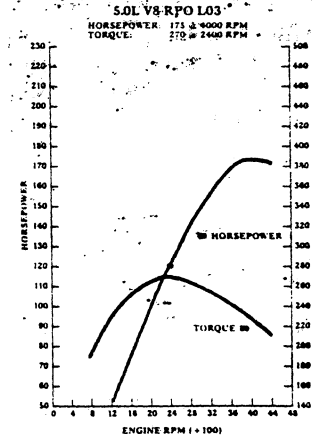
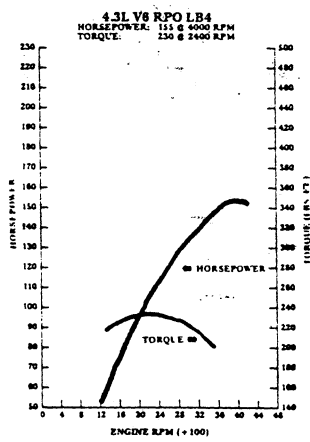
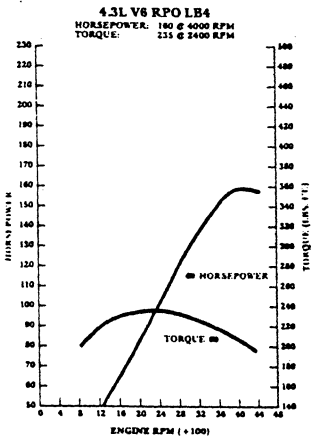
MODEL	TRANSMISSION				AXLES						GVWR
	(MM4) MAN 4-SPD	(MM5) MAN 5-SPD	(MX1) AUTO 3-SPD	(MX0) AUTO 4-SPD	← ECONOMY →			→ POWER →			
					2.73	3.08	3.42	3.73	4.10	4.56	
K3500 REG. CAB FLEETSIDE/ WIDESIDE K30903/E63 K3500 REG. CAB FLEETSIDE/ WIDESIDE BIG DOOLEY/HEAVY HAULER K30903/E63(R05)											
ENGINE											
5.7L V8 (L05)	S	—	—	—	—	—	—	—	S ¹	O ³	10,000 (R05)
	—	—	O	—	—	—	—	—	S ³	O ^{2,3}	
7.4L V8 (L19)	S	—	—	—	—	—	S	O	O ¹	—	8600
	—	—	O	—	—	—	S	O	O ¹	—	
	S	—	—	—	—	—	—	S	O ¹	O ⁴	
6.2L V8 DIESEL (LL4)	—	—	O	—	—	—	—	—	S ⁵	O ^{4,5}	10,000 (R05)
	S	—	—	—	—	—	—	—	S	O	
6.2L V8 DIESEL (LL4)	—	—	O	—	—	—	—	—	S	O ^{3,5}	10,000 (R05)
	—	—	—	—	—	—	—	—	—	—	

¹Requires KC4 Eng. Oil Cooler ²Requires KC4 Eng. Oil Cooler and V02 H.D. Cooling ³Requires 7.50-16D Tires ⁴Requires KC4 Eng. Oil Cooler and 7.50-16D Tires ⁵Requires V02 H.D. Cooling

MODEL	TRANSMISSION				AXLES						GVWR
	(MM4) MAN 4-SPD	(MM5) MAN 5-SPD	(MX1) AUTO 3-SPD	(MX0) AUTO 4-SPD	← ECONOMY →			→ POWER →			
					2.73	3.08	3.42	3.73	4.10	4.56	
K3500 EXT. CAB FLEETSIDE/CLUB COUPE WIDESIDE K30953/E63 K3500 EXT. CAB FLEETSIDE/CLUB COUPE WIDESIDE BIG DOOLEY/ HEAVY HAULER K30953/E63 (R05)											
ENGINE											
5.7L V8 (L05)	S	—	—	—	—	—	—	—	S ¹	O ¹	10,000 (R05)
	—	—	O	—	—	—	—	—	S ³	O ^{3,4}	
7.4L V8 (L19)	S	—	—	—	—	—	S	O	O ¹	—	8600
	—	—	O	—	—	—	S	O	O ¹	—	
	S	—	—	—	—	—	—	S	O ¹	O ¹	
6.2L V8 DIESEL (LL4)	—	—	O	—	—	—	—	—	S ⁵	O ^{3,4}	10,000 (R05)
	S	—	—	—	—	—	—	—	S	O	
6.2L V8 DIESEL (LL4)	—	—	O	—	—	—	—	—	S ⁵	O ^{2,4}	10,000 (R05)
	—	—	—	—	—	—	—	—	—	—	

¹Requires KC4 Eng. Oil Cooler ²Requires KC4 Eng. Oil Cooler and 7.50-16D Tires ³Requires KC4 Eng. Oil Cooler and V02 H.D. Cooling ⁴Requires 7.50-16D Tires ⁵Requires V02 H.D. Cooling

HORSEPOWER AND TORQUE RATINGS									
ENGINES	4.3L V6		5.0L V8	5.7L V8		7.4L V8	6.2L V8 DIESEL		
ORDERING CODE	LB4	LB4	L03	L05	L05	L19	LH6	LH6	LL4
RESTRICTIONS	BELOW 8600 LBS GVWR	BELOW 8600 LBS GVWR	UP TO 7200 LBS GVWR	BELOW 8600 LBS GVWR	8600-10,000 LBS GVWR	8,600-10,000 LBS GVWR	BELOW 8600 LBS GVWR WITH MANUAL TRANS	BELOW 8600 LBS GVWR WITH AUTO TRANS	8600-10,000 LBS GVWR
SAE NET HORSEPOWER @ RPM	160 @ 4000	155 @ 4000	175 @ 4000	210 @ 4000	190 @ 4000	230 @ 3600	135 @ 3600	140 @ 3600	150 @ 3600
SAE NET TORQUE LB. FT. @ RPM	235 @ 2400	230 @ 2400	270 @ 2400	300 @ 2800	300 @ 2400	385 @ 1600	240 @ 2000	250 @ 2000	265 @ 2000
FUEL SYSTEM	EFI	EFI	EFI	EFI	EFI	EFI	Gear Driven Mechanical Fuel Injection	Gear Driven Mechanical Fuel Injection	Gear Driven Mechanical Fuel Injection
CLUTCH SIZE (in.)	11	11	11	12	12	12	12	12	12
STD. Battery (Cold Cranking Amps @ 0°F)	630	630	630	630	630	630	2 @ 570 Each	2 @ 570 Each	2 @ 570 Each



TRANSMISSION GEAR RATIOS

MANUAL		
TRANSMISSION MODEL	MANUAL 4-SPEED SM465	MANUAL 5-SPEED w/OVERDRIVE
RPO CODE	MM4	MM5
SYNCHRONIZED SPEEDS	2/3/4	1/2/3/4/5
GEAR RATIOS		
First	6.55	4.02
Second	3.58	2.32
Third	1.70	1.40
Fourth	1.00	1.00
Fifth	—	.73
Reverse	6.09	3.74
GEAR TYPE		
Forward:	Helical	Helical
Reverse:	Spur	Spur
Center Distance (mm)	117	85
POWER TAKE-OFF DATA		
Opening Type:	SAE Std. 6-Bolt	—
Location:	Both Sides ¹	—
Drive Gear:	3rd Speed Counter Gear	—
PTO Gear RPM @ 1000 Engine RPM:	425	—
PTO Pitch Line Velocity @ 1000 Engine RPM:	560 ft./minute	—
LUBRICANT CAPACITY (pints)		
Oil	8	3.7

AUTOMATIC		
TRANSMISSION MODEL	AUTOMATIC 3-SPEED 400	AUTOMATIC 4-SPEED w/OVERDRIVE 700R4
RPO CODE	MX1	MX0
GEAR RATIOS		
First	2.48	3.06
Second	1.48	1.63
Third	1.00	1.00
Fourth	—	.70
Reverse	2.08	2.29
GEAR TYPE	Planetary	Planetary
TORQUE CONVERTER Element Types	Pump/Stator/Turbine	Pump/Stator/Turbine
Lock-up Clutch	—	Automatic
POWER TAKE-OFF DATA		
Opening Type:	—	—
Location:	—	—
Drive Gear:	—	—
PTO Gear RPM @ 1000 Engine RPM:	—	—
PTO Pitch Line Velocity @ 1000 RPM:	—	—
LUBRICANT CAPACITY (pints)		
Dry Fill	20	19
Refill	5	10

Left hand side PTO not accessible on 4-wheel drive models

TRANSFER CASE

KEY MODELS		
TRANSFER CASE MODEL	NEW PROCESS 241	BORG WARNER 1370
AVAILABILITY	K1500/2500/3500	K3500 w/R05
RATIOS: Hi Range Lo Range	1.00:1 2.72:1	1.00:1 2.69:1
LEVER POSITIONS	4-Lo (All-wheel Underdrive), N (Neutral) 2-Hi (Rear-wheel Drive), 4-Hi (All-wheel Drive)	4-Lo (All-wheel Underdrive), N (Neutral) 2-Hi (Rear-wheel Drive), 4-Hi (All-wheel Drive)
LEVER LOCATION	Rear of Transmission at Center of Floor	Rear of Transmission at Center of Floor
POWER TAKE-OFF DATA:		
Opening Location	—	SAE Std. 6 Bolt Right Hand Side
OIL CAPACITY (pints)	4.6	3.1

REAR AXLES

KEY: FF—Full Floating

REAR AXLE: Make and Capacity (lbs.)	GM 3750	GM 4800	GM 6000	GM 6000 FF	GM 7500 FF	
PINION & RING GEAR: Type	Hypoid		Hypoid		Hypoid	
Ratio	2.73	3.08	3.42	3.73	4.10	4.56
Pinion Teeth	15	13	12	11	10	9
Ring Gear Teeth	41	40	41	41	41	41
Ring Gear Dia. (in.)	8.5	8.5	8.5	8.5	8.5	8.5
DIFFERENTIAL: Type	2-Pinion Tapered Roller		2-Pinion Tapered Roller		4-Pinion Tapered Roller	
Bearings, Type	Semi-Floating Integral Shaft and Drive Flange		Semi-Floating Integral Shaft and Drive Flange		Full-Floating Integral Shaft and Drive Flange	
AXLE SHAFTS: Type	Semi-Floating Integral Shaft and Drive Flange		Semi-Floating Integral Shaft and Drive Flange		Full-Floating Integral Shaft and Drive Flange	
Min. Diameter (in.)	—		1.42		1.35	
HOUSING @ SPRING SEAT: Section Diameter and Thickness (in.)	3.0 x .25		3.0 x .25		3.49 x .215 (C) 3.49 x .265 (K)	

FRONT AXLES

FRONT AXLE: Make and Capacity (lbs.)	GM 3350-3925	GM ¹ 3750-4250
PINION & RING GEAR: Type	Hypoid	
Ratio	3.42	3.73
Pinion Teeth	12	11
Ring Gear Teeth	41	41
Ring Gear Dia. (in.)	8.25	8.25
DIFFERENTIAL: Type	2-Pinion Tapered Roller	
Bearings, Type	2-Pinion Tapered Roller	
LUBRICANT CAPACITY (pints)	4.5	6

¹On K2500 Series w/C6P and All K3500 Series Models

TWO-WHEEL DRIVE (C)

MODEL	C1500 REG. CAB SPORTSIDE/ FLEETSIDE/ WIDESIDE		C1500 REG. CAB FLEETSIDE/ WIDESIDE		C1500 EXT. CAB/ FLEETSIDE/ CLUB COUPE/ WIDESIDE		C2500 REG. CAB FLEETSIDE/ WIDESIDE		C2500 EXT. CAB FLEETSIDE/ CLUB COUPE WIDESIDE		C3500 REGULAR CAB/ FLEETSIDE/ WIDESIDE		C3500 EXT. CAB FLEETSIDE/ CLUB COUPE/ WIDESIDE			
	GAS	DIESEL	GAS	DIESEL	GAS	DIESEL	GAS	DIESEL	GAS	DIESEL	GAS	DIESEL	GAS	DIESEL		
MODEL NUMBER	C10703/E62 C10703/E63		C10903/E63		C10753/E63 C10953/E63		C20903/E63		C20753/E63 C20953/E63		C30903/E63		C30953/E63			
SUSPENSION (STD)																
PAYLOAD (Max. lbs.) ¹	1420	1428	1261	1247	1865 1525	1380 1040	2694	2209	2511 2418	2026 1933	3264	3007				
GVWR (lbs.)	5600		5600	6100	6200		7200		7200*		8600	8600				
GAWR (lbs.) Front Rear	2950 3404		2950 3404	3150 3686	3500 3686		3150 4670	3400	3600 4670		3600 6000	3600 6000				
FRONT SUSPENSION: Type Standard Spring Cap. (Tot. lbs.)	Ind. Coil Spring 2950		Ind. Coil Spring 2950 3200		Ind. Coil Spring 3500		Ind. Coil Spring 3150 3400		Ind. Coil Spring 3600		Ind. Coil Spring 3600		Ind. Coil Spring 3600			
Front Shock Absorbers Piston Diameter (mm) STD/OPT	25/32/46 ²		25/32/46 ²		25/32/46 ²		32/—		32/—		32/—		32/—			
Front Stabilizer Bar Diameter (in.) STD/OPT	1.00		1.00		1.00		1.00		1.00		1.00		1.00			
REAR SUSPENSION: Type	Semi-Elliptic 2-Stage Multi-Leaf Spring		Semi-Elliptic 2-Stage Multi-Leaf Spring		Semi-Elliptic 2-Stage Multi-Leaf Spring		Semi-Elliptic 2-Stage Multi-Leaf Spring		Semi-Elliptic 2-Stage Multi-Leaf Spring		Semi-Elliptic 2-Stage Multi-Leaf Spring		Semi-Elliptic 2-Stage Multi-Leaf Spring			
Standard Spring Cap. (Tot. lbs.) Leaves Per Spring Leaf Total Thickness (in.)	3750 4 2.14		3750 4 2.14		3750 4 2.14		4800 5 2.71		4800 5 2.71		6000 6 3.27		6000 6 3.27			
Rear Shock Absorber Piston Diameter (mm) STD/OPT	25/32/46 ²		25/32/46 ²		25/32/46 ²		32/—		32/—		32/—		32/—			
FRONT AXLE: Type Make Maximum Capacity (lbs.) Standard Hub Locks Pinion/Ring Gear Type	— — 2950 — —		— — 2950 3150 — —		— — 3600 — —		— — 3150 3400 — —		— — 3600 — —		— — 3800 — —		— — 3800 — —			
REAR AXLE: Type Make Maximum Capacity (lbs.) Pinion/Ring Gear Type	Semi-Floating GM 3750 Hypoid		Semi-Floating GM 3750 Hypoid		Semi-Floating GM 3750 Hypoid		Semi-Floating GM 4800 Hypoid		Semi-Floating GM 4800 Hypoid		Full-Floating GM 6000 Hypoid		Full-Floating GM 6000 Hypoid			
STANDARD TIRES: Tire Capacity (lbs. each) Front/Rear Inflation (PSI) Max.	Tubeless SBR P225/75R15 BW 1703 35		Tubeless SBR P225/75 R15 BW 1703 1843 35 35		Tubeless SBR P235/75R15 BW 1843 35		Tubeless SBR LT225/75R16D BW 2335 65		Tubeless SBR LT225/75R16D BW 2335 65		Tubeless SBR LT245/75R16E BW 3042 80		Tubeless SBR LT245/75R16E BW 3042 80			
WHEELS: Size (in.) Front/Rear Capacity (lbs. each) Bolt Holes Bolt Circle Diameter (in.) Offset (mm) Revolutions per mile @ 45 MPH	15x6 1702 5 5 0 737		15x6 1702 5 5 0 737		15x7 1843 5 5 13 722		15x7 1843 5 5 13 722		16x6.5 2400 6 5.5 13 706		16x6.5 2400 6 5.5 13 706		16x6.5 3000 8 6.5 17 678		16x6.5 3000 8 6.5 17 678	

¹Based on model weight. Total available for equipment and cargo. ²46mm shocks with ZQ8 Sport Handling Package.

TWO-WHEEL DRIVE (C)

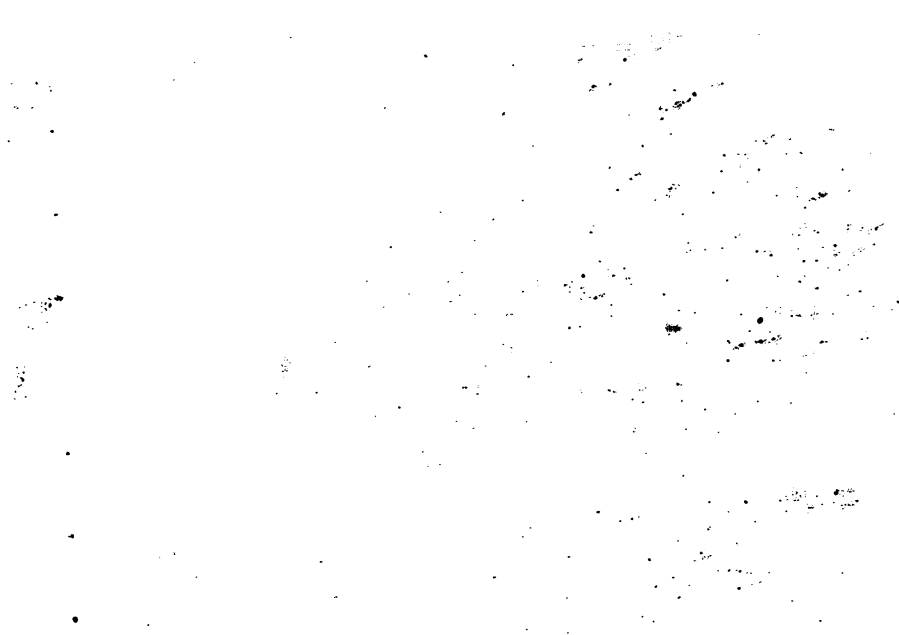
MODEL	C1500 REG. CAB SPORTSIDE/ FLEETSIDE/ WIDESIDE	C1500 REG. CAB FLEETSIDE/ WIDESIDE		C1500 EXT. CAB FLEETSIDE/ CLUB COUPE WIDESIDE		C2500 REG. CAB FLEETSIDE/ WIDESIDE		C2500 EXT. CAB FLEETSIDE/ CLUB COUPE WIDESIDE		C3500 REG. CAB FLEETSIDE/ WIDESIDE		C3500 EXT. CAB FLEETSIDE/ CLUB COUPE WIDESIDE	
		GAS	DIESEL	GAS	DIESEL	GAS	DIESEL	GAS	DIESEL	GAS	DIESEL	GAS	DIESEL
MODEL NUMBER	C10703/E62 C10703/E63	C10903/E63		C10753/E63 C10953/E63		C20903/E63		C20953/E63		C30903/E63		C30953/E63	
			B3J		B3J		B3J		B3J		B3J		B3J
SUSPENSION (OPT)													
Option	—	F44	—	—	—	C6P		C6P		R05		R05	
PAYLOAD (Max. lbs.) ¹	—	1742	—	—	—	3661	3119	3385	2857	4588	4067	4332	3788
GVWR (lbs.)	—	6100	—	—	—	8600		8600		10,000		10,000	
GAWR (lbs.): Front	—	3150	—	—	—	3600		3600		3600		3600	
Rear	—	3686	—	—	—	6000		6000		7500		7500	
FRONT SUSPENSION: Type	—	Ind. Coil Spring	—	—	—	Ind. Coil Spring		Ind. Coil Spring		Ind. Coil Spring		Ind. Coil Spring	
Spring Capacity (Tot. lbs.)	—	3150	—	—	—	3600		3600		3600		3600	
Front Shock Absorbers Piston Diameter (mm) STD/OPT	—	25/32/ 46 ²	—	—	—	32/—		32/—		32/—		32/—	
Front Stabilizer Bar Diameter (in.) STD/OPT	—	1.00	—	—	—	1.00		1.00		1.00		1.00	
REAR SUSPENSION: Type	—	Semi-Ell. 2-Stage Multi- Leaf Spring	—	—	—	Semi-Elliptic 2-Stage Multi-Leaf Spring		Semi-Elliptic 2-Stage Multi-Leaf Spring		Comb Semi-Elliptic 2-Stage Main/Aux		Comb Semi-Elliptic 2-Stage Main/Aux	
Spring Capacity (Tot. lbs.)	—	3750	—	—	—	6000		6000		7500		7500	
Leaves Per Spring	—	4	—	—	—	6		6		6/1		6/1	
Leaf Total Thickness (in.)	—	2.14	—	—	—	3.27		3.27		4.86		4.86	
Rear Shock Absorbers Piston Diameter (mm) STD/OPT	—	25/32/ 46 ²	—	—	—	32/—		32/—		32/—		32/—	
FRONT AXLE: Type	—	—	—	—	—	—		—		—		—	
Make	—	—	—	—	—	—		—		—		—	
Maximum Capacity (lbs.)	—	3150	—	—	—	3800		3800		3800		3800	
Standard Hub Locks	—	—	—	—	—	—		—		—		—	
Pinion/Ring Gear Type	—	—	—	—	—	—		—		—		—	
REAR AXLE: Type	—	Semi- Floating	—	—	—	Semi-Floating		Semi-Floating		Full-Floating		Full-Floating	
Make	—	GM	—	—	—	GM		GM		GM		GM	
Maximum Capacity (lbs.)	—	3750	—	—	—	6000		6000		7500		7500	
Pinion/Ring Gear Type	—	Hypoid	—	—	—	Hypoid		Hypoid		Hypoid		Hypoid	
STANDARD TIRES: Tire Capacity (lbs. each) Front/Rear Inflation (PSI) Max.	—	TbIs SBR P235/ 75R15 BW	—	—	—	Tubeless SBR LT245/75R16E BW		Tubeless SBR LT245/75R16E BW		Tubeless SBR LT225/75R16- C/D BW		Tubeless SBR LT225/75R16- C/D BW	
	—	1843	—	—	—	3042		3042		1940/2150		1940/2150	
	—	35	—	—	—	80		80		55		55	
WHEELS: Size (in.) Front/Rear Capacity (lbs. each) Bolt Holes Bolt Circle Diameter (in.) Offset (mm) Revolutions per mile @ 45 MPH	—	15x7 1843 5 5 13 722	—	—	—	16x6.5 3000 8 6.5 17 678		16x6.5 3000 8 6.5 17 678		16x6 2440 8 6.5 127 704/706		16x6 2440 8 6.5 127 704/706	

¹Based on model weight. Total available for equipment and cargo. ²46mm shocks with ZQ8 Sport Handling Package.

FOUR-WHEEL DRIVE (K)

MODEL	K1500 REG. CAB SPORTSIDE/ FLEETSIDE/ WIDESIDE	K1500 REG. CAB FLEETSIDE/ WIDESIDE		K1500 EXT. CAB FLEETSIDE/ CLUB COUPE WIDESIDE		K2500 REG. CAB FLEETSIDE/ WIDESIDE		K2500 EXT. CAB FLEETSIDE/ CLUB COUPE WIDESIDE		K3500 REG. CAB FLEETSIDE/ WIDESIDE	K3500 EXT. CAB FLEETSIDE/ CLUB COUPE WIDESIDE
		GAS	DIESEL	GAS	DIESEL	GAS	DIESEL	GAS	DIESEL		
MODEL NUMBER	K10703/E62 K10703/E63	K10903/E63		K10753/E63 K10953/E63		K20903/E63		K20753/E63 K20953/E63		K30903/E63	K30953/E63
			B3J		B3J		B3J		B3J		
SUSPENSION (STD)											
PAYLOAD (Max. lbs.) ¹	1019 1027	881	872	1292 1145	1131 984	2384	1899	2207 2108	1722 1623	2906	2628
GVWR (lbs.)	5600	5600	6100	6200	6600	7200		7200		8600	8600
GAWR: (lbs.) Front Rear	3350 3400	3400 3400	3600 3750	3600 3750		3750 4670		3750 4410		3750 6000	3750 6000
FRONT SUSPENSION: Type Standard Spring Cap. (Tot. lbs.)	Ind. Torsion Bar 3600	Ind. Torsion Bar 3600		Ind. Torsion Bar 3600		Ind. Torsion Bar 3750		Ind. Torsion Bar 3750		Ind. Torsion Bar 3750	Ind. Torsion Bar 3750
Front Shock Asborbers Piston Diameter (mm) STD/OPT	25/32/46 ²	25/32/46 ²		25/32		32/—		32/—		32/—	32/—
Front Stabilizer Bar Diameter (in.) STD/OPT	1.00	1.00		1.00		1.00		1.00		1.00	1.00
REAR SUSPENSION: Type	Semi-Elliptic 2-Stage Multi-Leaf Spring	Semi-Elliptic 2-Stage Multi-Leaf Spring		Semi-Elliptic 2-Stage Multi-Leaf Spring		Semi-Elliptic 2-Stage Multi-Leaf Spring		Semi-Elliptic 2-Stage Multi-Leaf Spring		Semi-Elliptic 2-Stage Multi-Leaf Spring	Semi-Elliptic 2-Stage Multi-Leaf Spring
Standard Spring Cap. (Tot. lbs.) Leaves Per Spring Leaf Total Thickness (in.)	3750 4 2.14	3750 4 2.14		3750 4 2.14		4800 5 2.71		4800 5 2.71		6000 6 3.27	6000 6 3.27
Rear Shock Absorber Piston Diameter (mm) STD/OPT	25/32/46 ²	25/32/46 ²		25/32		32/—		32/—		32/—	32/—
FRONT AXLE: Type Make Maximum Capacity Standard Hub Locks Pinion/Ring Gear Type	Independent GM 3350 Insta-Trac Hypoid	Independent GM 3450 3925 Insta-Trac Hypoid		Independent GM 3925 Insta-Trac Hypoid		Independent GM 3925 Insta-Trac Hypoid		Independent GM 3925 Insta-Trac Hypoid		Independent GM 4250 Insta-Trac Hypoid	Independent GM 4250 Insta-Trac Hypoid
REAR AXLE: Type Make Maximum Capacity (lbs.) Pinion/Ring Gear Type	Semi- Floating GM 3750 Hypoid	Semi- Floating GM 3750 Hypoid		Semi- Floating GM 3750 4800 Hypoid		Semi- Floating GM 4800 Hypoid		Semi- Floating GM 4800 Hypoid		Full- Floating GM 6000 Hypoid	Full- Floating GM 6000 Hypoid
STANDARD TIRES	Tubeless SBR LT225/75R16C BW	Tubeless SBR LT225/75R16C BW		Tubeless SBR LT245/75R16C BW		Tubeless SBR LT225/75R16D BW		Tubeless SBR LT245/75R16C BW		Tubeless SBR LT245/75R16E BW	Tubeless SBR LT245/75R16E BW
Tire Capacity (lbs. each) Front/Rear Inflation (PSI) Max.	1940 1940 50	1940 1940 50		2205 2400 50		2335 2400 65		2205 2400 50		3042 3000 80	3042 3000 80
WHEELS: Size (in.) Front/Rear Capacity (lbs. each) Bolt Holes Bolt Circle Diameter (in.) Offset (mm) Revolutions per mile @ 45 MPH	16 x 6.5 1700 6 5.5 44 704	16 x 6.5 1700 6 5.5 44 704	16 x 6.5 2400 6 5.5 50 704	16 x 6.5 2400 6 5.5 50 681		16 x 6.5 2400 6 5.5 50 706		16 x 6.5 2400 6 5.5 50 681		16 x 6.5 3000 8 6.5 17 678	16 x 6.5 3000 8 6.5 17 678

¹Based on model weight. Total available for equipment and cargo. ²46mm shocks on Z71 Off-Road Package.

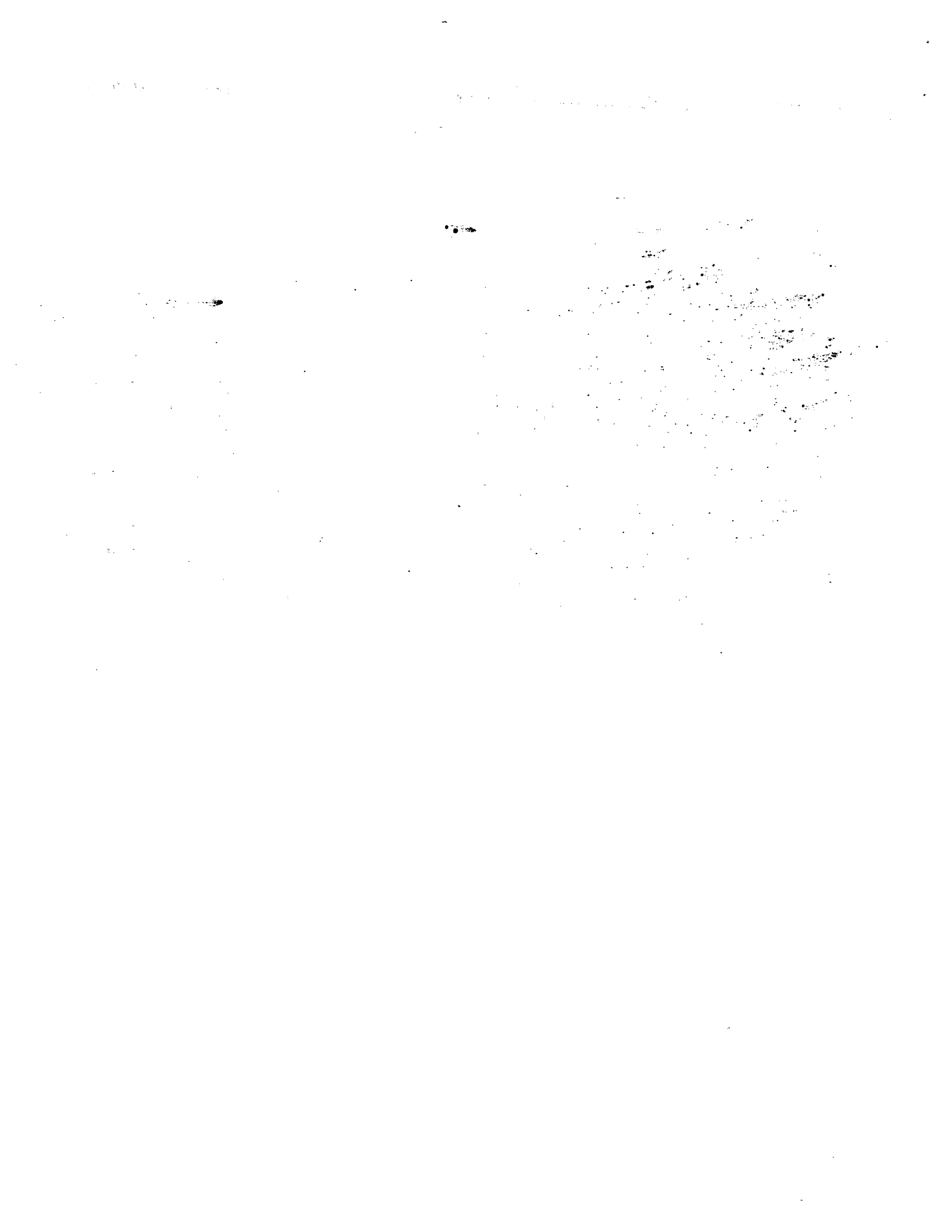


THE UNIVERSITY OF CHICAGO PRESS

FOUR-WHEEL DRIVE (K)

MODEL	K1500 REG. CAB SPORTSIDE/ FLEETSIDE/ WIDESIDE	K1500 REG. CAB FLEETSIDE/ WIDESIDE		K1500 EXT. CAB FLEETSIDE/ CLUB COUPE WIDESIDE		K2500 REG. CAB FLEETSIDE/ WIDESIDE		K2500 EXT. CAB FLEETSIDE/ CLUB COUPE WIDESIDE		K3500 REG. CAB FLEETSIDE/ WIDESIDE		K3500 EXT. CAB FLEETSIDE/ CLUB COUPE WIDESIDE	
		GAS	DIESEL	GAS	DIESEL	GAS	DIESEL	GAS	DIESEL	GAS	DIESEL	GAS	DIESEL
MODEL NUMBER	K10703/E63 K10703/E63	K10903/E63		K10753/E63 K10953/E63		K20903/E63		K20953/E63		K30903/E63		K30953/E63	
			B3J		B3J		B3J		B3J		B3J		B3J
SUSPENSION (OPT)													
Option	F44	F44	—	F44	—	C6P		C6P		R05		R05	
PAYLOAD (Max. lbs.) ¹	1495 1503	1357	—	1616/ 1469	—	3393	2917	3117	2642	4433	4067	4154	3788
GVWR (lbs.)	6100	6100	—	6600	—	8600		8600		10,000		10,000	
GAWR (lbs.): Front Rear	3600 3750	3600 3750	—	3600 3750	—	3750 6000		3750 6000		3750 7500		3750 7500	
FRONT SUSPENSION: Type	Ind. Torsion Bar	Ind. Torsion Bar	—	Ind. Torsion Bar	—	Ind. Torsion Bar		Ind. Torsion Bar		Ind. Torsion Bar		Ind. Torsion Bar	
Spring Capacity (Tot. lbs.)	3600	3600	—	3600	—	3750		3750		3750		3750	
Front Shock Absorbers Piston Diameter (mm) STD/OPT	25/32/46 ²	25/32/ 46 ²	—	25/32	—	32/—		32/—		32/—		32/—	
Front Stabilizer Bar Diameter (in.) STD/OPT	1.00	1.00	—	1.00	—	1.00		1.00		1.00		1.00	
REAR SUSPENSION: Type	Semi-Elliptic 2-Stage Multi-Leaf Spring	Semi-Ell. 2-Stage Multi- Leaf Spring	—	Semi-Ell. 2-Stage Multi- Leaf Spring	—	Semi-Elliptic 2-Stage Multi-Leaf Spring		Semi-Elliptic 2-Stage Multi-Leaf Spring		Comb Semi-Elliptic 2-Stage Main/Aux		Comb Semi-Elliptic 2-Stage Main/Aux	
Spring Capacity (Tot. lbs.) Leaves Per Spring Leaf Total Thickness (in.)	3750 4 2.14	3750 4 2.14	—	3750 4 2.14	—	6000 6 3.27		6000 6 3.27		7500 6/1 4.86		7500 6/1 4.86	
Rear Shock Absorbers Piston Diameter (mm) STD/OPT	25/32/46 ²	25/32/ 46 ²	—	25/32	—	32/—		32/—		32/—		32/—	
FRONT AXLE: Type	Independent	Indpt.	—	Indpt.	—	Independent		Independent		Independent		Independent	
Make	GM	GM	—	GM	—	GM		GM		GM		GM	
Maximum Capacity (lbs.)	3925	3925	—	4800	—	4250		4250		4250		4250	
Standard Hub Locks	Insta-Trac	Insta- Trac	—	Insta- Trac	—	Insta-Trac		Insta-Trac		Insta-Trac		Insta-Trac	
Pinion/Ring Gear Type	Hypoid	Hypoid	—	Hypoid	—	Hypoid		Hypoid		Hypoid		Hypoid	
REAR AXLE: Type	Semi-Floating	Semi- Floating	—	Semi- Floating	—	Semi-Floating		Semi-Floating		Full-Floating		Full-Floating	
Make	GM	GM	—	GM	—	GM		GM		GM		GM	
Maximum Capacity (lbs.)	3750	3750	—	4800	—	6000		6000		7500		7500	
Pinion/Ring Gear Type	Hypoid	Hypoid	—	—	—	Hypoid		Hypoid		Hypoid		Hypoid	
STANDARD TIRES:	Tubeless SBR LT225/75R16C BW	Tbls. SBR LT225/ 75R16C BW	—	Tbls. SBR LT245/ 75R16C BW	—	Tubeless SBR LT245/75R16E BW		Tubeless SBR LT245/75R16E BW		Tubeless SBR LT245/75R16D BW		Tubeless SBR LT225/75R16D BW	
Tire Capacity (lbs. each) Front/Rear Inflation (PSI) Max.	3000 50	1940 50	—	2205 45	—	3042 80		3042 80		2335 65		2335 65	
WHEELS: Size (in.) Front/Rear Capacity (lbs. each) Bolt Holes Bolt Circle Diameter (in.) Offset (mm) Revolutions per mile @ 45 MPH	16x6.5 2400 6 5.5 50 704	16x6.5 2400 6 5.5 50 704	—	16x6.5 2400 6 5.5 50 681	—	16x6.5 3000 8 6.5 17 678		16x6.5 3000 8 6.5 17 678		16x6 2440 8 6.5 127 706		16x6 2440 8 6.5 127 706	

¹Based on model weight. Total available for equipment and cargo. ²46mm shocks on Z71 Off-Road Package.



WHEELS AND TIRES

1990

C/K/SIERRA PICKUP

KEY: — Not Available
 AS - All-Season
 SBR - Steel-Belted Radial Ply
 BW - Blackwall
 WW - Whitewall

WL - White Lettered
 HWY - Highway
 ON-OFF - On-Off Road
 WOL - White Outline Lettered

P-METRIC RADIAL TIRES
 The tire load range in P-Metric Series Radial Tires is not identified with letters such as B, C, and D or with ply rating as in the Alpha system. P-Metric tires are offered with a Standard Load Rating or Extra Load Rating which is related to tire pressure—Standard Load—35 psi Extra Load—41 psi
 Maximum tire pressure will be stamped on the tire sidewall in metric kilo Pascals (kPa) and pounds per square inch (PSI). In metric tire pressure, 7 kilo Pascals (kPa) are equivalent to 1 lb. per sq. in. (PSI). The tire maximum load capacity will also be stamped on the tire sidewall in kilograms and pounds.

TIRE SIZE	TYPE	RPO	PLY	LOAD RANGE	TIRE CAPACITY (LBS. EA.)	INFLATION (PSI) MAX.	WHEEL SIZE (IN.)	WHEEL CAPACITY (LBS. EA.)	BOLT HOLES	BOLT CIRCLE DIA. (IN.)	OFFSET (MM)	REV. PER MILE @ 45 MPH		
P225/75R15 Tubeless	AS SBR WL Front: Rear: Spare:	XEV YEV ZEV	—	Std	1703	35	15 x 6.0	1702	5	5	0	737		
P225/75R15 Tubeless	AS SBR BW Front: Rear: Spare:	XET YET ZET	—	Std	1703	35	15 x 6.0	1702	5	5	0	737		
P235/75R15 Tubeless	AS SBR BW Front: Rear: Spare:	XFL YFL ZFL	—	Std	1843	35	15 x 6.0	1702	5	5	0	722		
P235/75R15 Tubeless	AS SBR WW Front: Reg Cab w/5600 GVWR w/6100 GVWR C1500 Ext Cab	XFM — — XFM	— — —	Std Std Std	1843 1843 1843	35 35 35	15 x 6.0 15 x 7.0 15 x 7.0	1702 1843 1843	5 5 5	5 5 5	0 13 13	722 722 722		
	Rear: Reg. Cab w/5600 GVWR w/6100 GVWR C1500 Ext Cab	YFM — — YFM	— — —	Std Std Std	1843 1843 1843	35 35 35	15 x 6.0 15 x 7.0 15 x 7.0	1702 1843 1843	5 5 5	5 5 5	0 13 13	722 722 722		
	Spare: Reg Cab w/5600 GVWR w/6100 GVWR C1500 Ext Cab	ZFM — — ZFM	— — —	Std Std Std	1843 1843 1843	35 35 35	15 x 6.0 15 x 7.0 15 x 7.0	1702 1843 1843	5 5 5	5 5 5	0 13 13	722 722 722		
	P235/75R15 Tubeless	AS SBR WL Front: Reg Cab w/5600 GVWR w/6100 GVWR C1500 Ext Cab	XFN — — XFN	— — —	Std Std Std	1843 1843 1843	35 35 35	15 x 6.0 15 x 7.0 15 x 7.0	1702 1843 1843	5 5 5	5 5 5	0 13 13	722 722 722	
		Rear: Reg. Cab w/5600 GVWR w/6100 GVWR C1500 Ext Cab	YFN — — YFN	— — —	Std Std Std	1843 1843 1843	35 35 35	15 x 6.0 15 x 7.0 15 x 7.0	1702 1843 1843	5 5 5	5 5 5	0 13 13	722 722 722	
		Spare: Reg Cab w/5600 GVWR w/6100 GVWR C1500 Ext Cab	ZFN — — ZFN	— — —	Std Std Std	1843 1843 1843	35 35 35	15 x 6.0 15 x 7.0 15 x 7.0	1702 1843 1843	5 5 5	5 5 5	0 13 13	722 722 722	
		P275/60R15 Tubeless	AS SBR BL Front: Rear: Spare:	XCN YCN ZCN	— — —	Std Std Std	1953 1953 1953	35 35 35	15 x 7.0 15 x 7.0 15 x 7.0	1843 1843 1843	5 5 5	5 5 5	0 0 0	743 743 743

C/K/SIERRA PICKUP

EY: -- Not Available
 AS - All-Season
 SBR - Steel-Belted Radial Ply
 BW - Blackwall
 WW - Whitewall

WL - White Lettered
 HWY - Highway
 ON-OFF - On-Off Road
 WOL - White Outline Lettered

P-METRIC RADIAL TIRES

The tire load range in P-Metric Series Radial Tires is not identified with letters such as B, C, and D or with ply rating as in the Alpha system. P-Metric tires are offered with a Standard Load Rating or Extra Load Rating which is related to tire pressure—Standard Load—35 psi Extra Load—41 psi
 Maximum tire pressure will be stamped on the tire sidewall in metric kilo Pascals (kPa) and pounds per square inch (PSI). In metric tire pressure, 7 kilo Pascals (kPa) are equivalent to 1 lb. per sq. in. (PSI). The tire maximum load capacity will also be stamped on the tire sidewall in kilograms and pounds.

TIRE SIZE	TYPE	RPO	PLY	LOAD RANGE	TIRE CAPACITY (LBS. EA.)	INFLATION (PSI) MAX.	WHEEL SIZE (IN.)	WHEEL CAPACITY (LBS. EA.)	BOLT HOLES	BOLT CIRCLE DIA. (IN.)	OFFSET (MM)	REV. PER MILE @ 45 MPH		
LT225/75R16C Tubeless	ON-OFF SBR BW Front: K1500 Series C3500 Series w/R05 w/o B3J C3500 Series w/R05 w/B3J	XHE	6	C	1940	50	16 x 6.5	1700	6	5.5	44	704		
		XHE	6	C	1940	55	16 x 6.0	2440	8	6.5	127	704		
		XHE	6	C	1940	55	16 x 6.0	2440	8	6.5	127	704		
	Rear:	YHE	6	C	1940	50	16 x 6.5	1700	6	5.5	44	704		
	Spare:	ZHE	6	C	1940	50	16 x 6.5	1700	6	5.5	44	704		
LT225/75R16C Tubeless	ON-OFF SBR BW Front: Rear: Spare:	XHJ YHJ ZHJ	6	C	1940	50	16 x 6.5	1700	6	5.5	44	704		
	LT225/75R16C Tubeless	ON-OFF SBR WOL Front: Rear: Spare:	XHN YHN ZHN	6	C	1940	50	16 x 6.5	1700	6	5.5	44	704	
		LT225/75R16D Tubeless	AS SBR BW Front: C3500 w/R05 w/o B3J C3500 w/R05 w/B3J	XHP	8	D	2335	65	16 x 6.5	2400	6	5.5	50	706
				XHP	8	D	2150	55	16 x 6.0	2440	8	6.5	127	706
	XHP		8	D	2150	55	16 x 6.0	2440	8	6.5	127	706		
Rear: C3500 w/R05 w/o B3J C3500 w/R05 w/B3J	YHP		8	D	2335	65	16 x 6.5	2400	6	5.5	50	706		
	YHP		8	D	2150	55	16 x 6.0	2440	8	6.5	127	706		
	YHP		8	D	2150	55	16 x 6.0	2440	8	6.5	127	706		
Spare: C3500 w/R05	ZHP	8	D	2335	65	16 x 6.5	2400	6	5.5	50	706			
	ZHP	8	D	2150	55	16 x 6.0	2440	8	6.5	127	706			
LT225/75R16D Tubeless	ON-OFF SBR BW Front: K2500 Reg Cab K3500 w/o B3J K3500 w/B3J	XHR	8	D	2335	65	16 x 6.5	2400	6	5.5	50	706		
		XHR	8	D	2335	65	16 x 6.5	3000	8	6.5	17	706		
		XHR	8	D	2335	65	16 x 6.0	2440	8	6.5	127	706		

WHEELS AND TIRES

1990

C/K/SIERRA PICKUP

KEY: — Available
 AS - All Season
 SBR - Steel-Belted Radial Ply
 BW - Black wall
 WW - Whitewall

WL - White Lettered
 HWY - Highway
 ON-OFF - On-Off Road
 WOL - White Outline Lettered

P-METRIC RADIAL TIRES

The tire load range in P-Metric series Radial Tires is not identified with letters such as B, C, and D or with ply rating as in the Alpha system. P-Metric tires are offered with a Standard Load Rating or Extra Load Rating which is related to tire pressure.—Standard Load—35 psi Extra Load—41 psi
 Maximum tire pressure will be stamped on the tire sidewall in metric kilo Pascals (kPa) and pounds per square inch (PSI). In metric tire pressure, 7 kilo Pascal (kPa) are equivalent to 1 lb. per sq. in. (PSI). The tire maximum load capacity will also be stamped on the tire sidewall in kilograms and pounds.

TIRE SIZE	TYPE	RPO	PLY	LOAD RANGE	TIRE CAPACITY (LBS. EA.)	INFLATION (PSI) MAX.	WHEEL SIZE (IN.)	WHEEL CAPACITY (LBS. EA.)	BOLT HOLES	BOLT CIRCLE DIA. (IN.)	OFFSET (MM)	REV. PER MILE @ 45 MPH
LT225/75R16D (Cont.)	Rear: C/K2500 Reg. Cab C/K3500 w/R05	YHR	8	D	2335	65	16 x 6.5	2400	6	5.5	50	706
	w/o B3J C/K3500 w/R05	YHR	8	D	2335	65	16 x 6.0	2440	8	6.5	127	706
	w/B3J	YHR	8	D	2335	65	16 x 6.0	2440	8	6.5	127	706
	Spare: K3500, C2500 Reg. Cab C/K3500 w/o R05	ZHR	8	D	2335	65	16 x 6.5	2400	6	5.5	50	706
		ZHR	8	D	2335	65	16 x 6.0	2440	8	6.5	127	706
LT245/75R16C Tubeless	AS SBR BW Front: Rear: Spare: K1500 K2500	XBK YBK ZBK ZBK	6	C	2205	50	16 x 6.5	2400	6	5.5	50	681
LT245/75R16C Tubeless	ON-OFF SBR BW Front: Rear: Spare: K1500 K2500	XBN YBN ZBN ZBN	6	C	2205	50	16 x 6.5	2400	6	5.5	50	681
LT245/75R16C Tubeless	ON-OFF SBR WL Front: Rear: Spare: K1500 K2500	XBX YBX ZBX ZBX	6	C	2205	50	16 x 6.5	2400	6	5.5	50	681
LT245/75R16E Tubeless	AS SBR BW Front: Rear: Spare:	XHH YHH ZHH	10	E	3042	80	16 x 6.5	3000	8	6.5	17	678
LT245/75R16E Tubeless	ON-OFF SBR BW Front: K2500 Reg Cab w/o C6P K2500/3500 w/C6P	XGK XGK	10 10	E E	3042 3042	80 80	16 x 6.5 16 x 6.5	2400 3000	6 8	5.5 6.5	50 17	678 678
	Rear: K2500 Reg Cab w/o C6P K2500/3500 w/C6P	YGK YGK	10 10	E E	3042 3042	80 80	16 x 6.5 16 x 6.5	2400 3000	6 8	5.5 6.5	50 17	678 678
	Spare: C/K2500	ZGK	10	E	3042	80	16 x 6.5	2400	6	5.5	50	678
	C. K3500	ZGK	10	E	3042	80	16 x 6.5	3000	8	6.5	17	678

BY: — — Not Available

AS - All-Season

SBR - Steel-Belted Radial Ply

BW - Blackwall

WW - Whitewall

WL - White Lettered

HWY - Highway

ON-OFF - On-Off Road

WOL - White Outline Lettered

P-METRIC RADIAL TIRES

The tire load range in P-Metric Series Radial Tires is not identified with letters such as B, C, and D or with ply rating as in the Alpha system. P-Metric tires are offered with a Standard Load Rating or Extra Load Rating which is related to tire pressure.—Standard Load—35 psi; Extra Load—41 psi
 Maximum tire pressure will be stamped on the tire sidewall in metric kilo Pascals (kPa) and pounds per square inch (PSI). In metric tire pressure, 7 kilo Pascals (kPa) are equivalent to 1 lb. per sq. in. (PSI). The tire maximum load capacity will also be stamped on the tire sidewall in kilograms and pounds.

TIRE SIZE	TYPE	RPO	PLY	LOAD RANGE	TIRE CAPACITY (LBS. EA.)	INFLATION (PSI) MAX.	WHEEL SIZE (IN.)	WHEEL CAPACITY (LBS. EA.)	BOLT HOLES	BOLT CIRCLE DIA. (IN.)	OFFSET (MM)	REV. PER MILE @ 45 MPH
LT265/75R16C Tubeless	ON-OFF SBR BW Front: Reg Cab	XGL	6	C	2470	50	16 x 6.5	1700	6	5.5	44	655
	Ext Cab	XGL	6	C	2470	50	16 x 6.5	2400	6	5.5	50	655
	Rear: Reg Cab	YGL	6	C	2470	50	16 x 6.5	1700	6	5.5	44	655
	Ext Cab	YGL	6	C	2470	50	16 x 6.5	2400	6	5.5	50	655
	Spare: Reg Cab	ZGL	6	C	2470	50	16 x 6.5	1700	6	5.5	44	655
	Ext Cab	ZGL	6	C	2470	50	16 x 6.5	2400	6	5.5	50	655
LT265/75R16C Tubeless	ON-OFF SBR WOL Front: Reg Cab	XGM	6	C	2470	50	16 x 6.5	1700	6	5.5	44	655
	Ext Cab	XGM	6	C	2470	50	16 x 6.5	2400	6	5.5	50	655
	Rear: Reg Cab	YGM	6	C	2470	50	16 x 6.5	1700	6	5.5	44	655
	Ext Cab	YGM	6	C	2470	50	16 x 6.5	2400	6	5.5	50	655
	Spare: Reg Cab	ZGM	6	C	2470	50	16 x 6.5	1700	6	5.5	44	655
	Ext Cab	ZGM	6	C	2470	50	16 x 6.5	2400	6	5.5	50	655
7.50-16D Tubeless	HWY Nylon BW Front: w/o B3J w/B3J	XDE XDE	8	D	2140	60	16 x 6.0	2440	8	6.5	127	652
	Rear: w/o B3J w/B3J	YDE YDE	8	D	2140	60	16 x 6.0	2440	8	6.5	127	652
	Spare:	ZDE	8	D	2140	60	16 x 6.0	2440	8	6.5	127	652
7.50-16D Tubeless	ON-OFF Nylon BW Front: w/o B3J w/B3J	XDL XDL	8	D	2140	60	16 x 6.0	2440	8	6.5	127	652
	Rear: w/o B3J w/B3J	YDL YDL	8	D	2140	60	16 x 6.0	2440	8	6.5	127	652
	Spare:	ZDL	8	D	2140	60	16 x 6.0	2440	8	6.5	127	652

C/K/SIERRA OPTIONAL WHEELS

RPO	DESCRIPTION	WHEEL SIZE (IN.)	CAPACITY	BOLT HOLES	BOLT CIRCLE DIA. (IN.)	OFFSET (MM)
—	Wheels—Chrome (Part of BYP C Series Sport Equip. Pkg. Chev. only)	15 x 7.0	1843	5	5.0	13
—	Wheels—Chrome (Part of B4U and ZQ8 w/BYP)	15 x 7.0	1843	5	5.0	0
—	Wheels—Styled Painted (Part of ZQ8)	15 x 7.0	1843	5	5.0	0
N90	Wheels—Aluminum, Cast (C Series) (Part of BYP for GMC)	15 x 7.0	1843	5	5.0	13
PF4	Wheels—Aluminum, Cast (K Series)	16 x 7.0	1702	6	5.5	44

TWO-WHEEL DRIVE (C)

MODEL	C1500 REG. CAB SPORTSIDE/ FLEETSIDE/ WIDESIDE	C1500 REG. CAB FLEETSIDE/ WIDESIDE	C1500 EXT. CAB FLEETSIDE/ CLUB COUPE WIDESIDE	C2500 REG. CAB FLEETSIDE/ WIDESIDE		C2500 EXT. CAB FLEETSIDE/ CLUB COUPE WIDESIDE			C3500 REG. CAB FLEETSIDE/ WIDESIDE	C3500 EXT. CAB FLEETSIDE/ CLUB COUPE WIDESIDE	
MODEL NUMBER	C10703/E62 C10703/E63	C10903/E63	C10753/E63 C10953/E63	C20903/E63 C6P		C20753/ E63	C20953/ E63	C20953/ E63/ C6P	C30903/E63	C30953/E63	
FRAME											
Side Rail Dimensions: Width (in.)	2.28	2.28	2.28	2.28		2.28			2.28	2.28	
Depth (in.)	6.30	6.30	6.30	6.30	7.24	6.30	6.30	7.24	7.24	7.24	
Thickness (in.)	.130	.130	.165	.130	.213	.165	.165	.244	.213	.244	
Section Modulus Rails only (in ³)	2.66	2.66	3.37	2.26	5.26	3.37	3.37	6.06	5.26	6.06	
RBM of Frame (lb.-in.)	95,760	95,760	121,320	95,760	189,360	121,320	121,320	218,160	189,360	218,160	
Width Over Rails Front (in.)	45.3	45.3	45.3	45.3		45.3			45.3	45.3	
Rear (in.)	36.7	36.7	36.7	36.7		36.7			36.7	36.7	
Overall Length of Rail (in.)	181.1	200.0	205.1	224.0	200.0	200.1	205.1	224.0	224.1	200.1	224.1
STEERING											
Type	Variable Ratio Integral Power	Variable Ratio Integral Power	Variable Ratio Integral Power	Variable Ratio Integral Power		Variable Ratio Integral Power			Variable Ratio Integral Power	Variable Ratio Integral Power	
Steering Ratio On Center/At Lock	16/13:1 ¹	16/13:1 ¹	16/13:1	16/13:1	16/13:1	16/13:1	16/13:1	16/13:1	16/13:1	16/13:1	
Turning Diameter: Curb-To-Curb (ft.)	41.3	44.6	48.1	52.9	44.6	45.7	48.1	52.9	52.9	45.7	52.9
Wall-To-Wall (ft.)	43.2	46.5	50.0	54.8	46.5	47.5	50.1	54.8	54.8	47.5	54.8

¹ZQ8 Sport Suspension has a 12.7:1 ratio.

TWO-WHEEL DRIVE (C)

MODEL	C1500 REG. CAB SPORTSIDE/ FLEETSIDE/ WIDESIDE	C1500 REG. CAB FLEETSIDE/ WIDESIDE	C1500 EXT. CAB FLEETSIDE/ CLUB COUPE WIDESIDE	C2500 REG. CAB FLEETSIDE/ WIDESIDE		C2500 EXT. CAB FLEETSIDE/ CLUB COUPE WIDESIDE		C3500 REG. CAB FLEETSIDE/ WIDESIDE	C3500 EXT. CAB FLEETSIDE/ CLUB COUPE WIDESIDE					
MODEL NUMBER	C10703/E62 C10703/E63	C10903/E63	C10753/E63 C10953/E63	C20903/E63		C20753/E63 C20953/E63/C6P		C30903/E63	C30953/E63					
BRAKES														
GVWR (lbs.)	5600		5600	6100	6200	7200	8600	7200	8600	8600	10,000	8600	10,000	
Type	Vac. Power		Vac. Power		Vac. Power		Vac. Power		Vac. Power		Vac. Power	Hyd. Power	Vac. Power	Hyd. Power
	Front Disc/Rear Drum w/Rear Wheel Anti-Lock Brake System		Front Disc/Rear Drum w/Rear Wheel Anti-Lock Brake System		Front Disc/Rear Drum w/Rear Wheel Anti-Lock Brake System		Front Disc/Rear Drum w/Rear Wheel Anti-Lock Brake System		Front Disc/Rear Drum w/Rear Wheel Anti-Lock Brake System		Front Disc/Rear Drum w/Rear Wheel Anti-Lock Brake System		Front Disc/Rear Drum w/Rear Wheel Anti-Lock Brake System	
Booster (Diaphragm Diameter in.)	9.5 Tandem		9.5 Tandem		9.5 Tandem		9.5 Tandem		9.5 Tand.		—		9.5 Tand.	
Front Rotor Size (Diameter x Thickness in.)	11.57x1.0		11.57x1.0	11.57x1.25	11.57x1.25	12.50x1.26	11.57x1.25	12.50x1.26	12.50x1.26		12.50x1.26			
Front Facing Contact Per Axle (sq. in.)	34.8		34.8		34.8		34.8	38.0	34.8		38.0		38.0	
Rear Drum Size (Diameter x Width in.)	10.0x2.25		10.0x2.25		10.0x2.25		11.15x2.75	13.0x2.5	11.15x2.75	13.0x2.5	13.0x2.5	13.0x3.5	13.0x2.5	13.0x3.5
Rear Facing Contact Per Axle (sq. in.)	84.88		84.88		84.88		115.84	116.73	115.84	116.73	116.73	166.04	116.73	166.04
Parking Brake Type	Cable To Rear Wheels		Cable To Rear Wheels		Cable To Rear Wheels		Cable To Rear Wheels		Cable To Rear Wheels		Cable To Rear Wheels		Cable To Rear Wheels	

FOUR-WHEEL DRIVE (K)

MODEL	K1500 REG. CAB SPORTSIDE/ FLEETSIDE/ WIDESIDE	K1500 REG. CAB FLEETSIDE/ WIDESIDE	K1500 EXT. CAB FLEETSIDE/ CLUB COUPE WIDESIDE	K2500 REG. CAB FLEETSIDE/ WIDESIDE	K2500 EXT. CAB FLEETSIDE/ CLUB COUPE WIDESIDE			K3500 REG. CAB FLEETSIDE/ WIDESIDE	K3500 EXT. CAB FLEETSIDE/ CLUB COUPE WIDESIDE		
MODEL NUMBER	K10703/E62 K10703/E63	K10903/E63	K10753/E63 K10953/E63	K20903/E63 C6P	K20753/ E63	K20953/ E63	K20953/ E63/ C6P	K30903/E63	K30953/E63		
FRAME											
Side Rail Dimensions: Width (in.)	2.28	2.28	2.28	2.28	2.28			2.28	2.28		
Depth (in.)	7.48	7.48	7.48	7.48	7.48			7.48	7.48		
Thickness (in.)	.134	.134	.165	.134	.213	.165	.165	.244	.213	.244	
Section Modulus Rails only (in. ³)	3.27	3.27	4.06	3.27	5.25	4.06	4.06	6.06	5.25	6.06	
RBM of Frame (lb.-in.)	117,720	117,720	146,160	117,720	189,000	146,160	146,160	218,160	189,000	218,160	
Width Over Rails Front (in.)	45.3	45.3	45.3	45.3	45.3			45.3	45.3		
Rear (in.)	36.7	36.7	36.7	36.7	36.7			36.7	36.7		
Overall Length of Rail (in.)	180.8	199.7	204.8	223.7	199.7	201.0	204.8	223.7	225.1	201.1	225.1
STEERING											
Type	Variable Ratio Integral Power	Variable Ratio Integral Power	Variable Ratio Integral Power	Variable Ratio Integral Power	Variable Ratio Integral Power	Variable Ratio Integral Power	Variable Ratio Integral Power	Variable Ratio Integral Power	Variable Ratio Integral Power		
Steering Ratio On Center/At Lock	16/13:1	16/13:1	16/13:1	16/13:1	16/13:1	16/13:1	16/13:1	16/13:1	16/13:1	16/13:1	
Turning Diameter: Curb-To-Curb (ft.)	40.3	44.4	47.9	52.2	44.4	45.1	47.9	52.2	52.2	45.1	52.2
Wall-To-Wall (ft.)	42.3	46.3	49.8	53.7	46.3	46.7	49.8	53.7	53.7	46.7	53.7

FOUR-WHEEL DRIVE (K)

MODEL	K1500 REG. CAB SPORTSIDE/ FLEETSIDE/ WIDESIDE	K1500 REG. CAB FLEETSIDE/ WIDESIDE	K1500 EXT. CAB FLEETSIDE/ CLUB COUPE WIDESIDE	K2500 REG. CAB FLEETSIDE/ WIDESIDE	K2500 EXT. CAB FLEETSIDE/ CLUB COUPE WIDESIDE	K3500 REG. CAB FLEETSIDE/ WIDESIDE	K3500 EXT. CAB FLEETSIDE/ CLUB COUPE WIDESIDE							
MODEL NUMBER	K10703/E62 K10703/E63	K10903/E63	K10753/E63 K10953/E63	K20903/E63	K20753/E63 K20953/E63	K30903/E63	K30953/E63							
BRAKES														
GVWR (lbs.)	5600	6100	5600	6100	6200	6600	7200	8600	7200	8600	8600	10,000	8600	10,000
Type	Vac. Power		Vac. Power		Vac. Power		Vac. Power		Vac. Power		Vac. Power	Hyd. Power	Vac. Power	Hyd. Power
	Front Disc/Rear Drum w/Rear Wheel Anti-Lock Brake System		Front Disc/Rear Drum w/Rear Wheel Anti-Lock Brake System		Front Disc/Rear Drum w/Rear Wheel Anti-Lock Brake System		Front Disc/Rear Drum w/Rear Wheel Anti-Lock Brake System		Front Disc/Rear Drum w/Rear Wheel Anti-Lock Brake System		Front Disc/Rear Drum w/Rear Wheel Anti-Lock Brake System		Front Disc/Rear Drum w/Rear Wheel Anti-Lock Brake System	
Booster (Diaphragm Diameter in.)	9.5 Tandem		9.5 Tandem		9.5 Tandem		9.5 Tandem		9.5 Tandem		9.5 Tand.	—	9.5 Tand.	—
Front Rotor Size (Diameter x Thickness in.)	11.57x 1.0	11.57x 1.25	11.57x 1.0	11.57x 1.25	11.57x1.25		11.57x 1.20	12.50 1.26	11.57x 1.25	12.50x 1.26	12.50x1.26		12.50x1.26	
Front Facing Contact Per Axle (sq. in.)	42.24		42.24		42.24		42.24		42.24		42.24		42.24	
Rear Drum Size (Diameter x Width in.)	10.0x2.25		10.0x2.25		10.0x 2.25	11.15x 2.75	11.15x 2.75	13.0x 2.5	11.15x 2.75	13.0x 2.5	13.0x 2.5	13.0x 3.5	13.0x 2.5	13.0x 3.5
Rear Facing Contact Per Axle (sq. in.)	84.88		84.88		115.84		115.84	116.73	115.84	116.73	116.73	166.04	116.73	166.04
Parking Brake Type	Cable To Rear Wheels		Cable To Rear Wheels		Cable To Rear Wheels		Cable To Rear Wheels		Cable To Rear Wheels		Cable To Rear Wheels		Cable To Rear Wheels	

TWO-WHEEL DRIVE (C) AND FOUR-WHEEL DRIVE (K)

MODEL	C/K1500 REG. CAB SPORTSIDE/ FLEETSIDE/ WIDESIDE	C/K1500 REG. CAB FLEETSIDE/ WIDESIDE	C/K1500 EXTENDED CAB FLEETSIDE/ CLUB COUPE WIDESIDE	C/K2500 REGULAR CAB FLEETSIDE/ WIDESIDE	C/K2500 EXTENDED CAB FLEETSIDE/CLUB COUPE WIDESIDE	C/K3500 REGULAR CAB FLEETSIDE/ WIDESIDE	C/K3500 EXTENDED CAB FLEETSIDE/CLUB COUPE WIDESIDE
MODEL NUMBER	C/K10703/E62 C/K10703/E63	C/K10903	C/K10753/E63 C/K10953/E63	C/K20903	C/K20753/E63 C/K20953/E63	C/K30903	C/K30953

ELECTRICAL

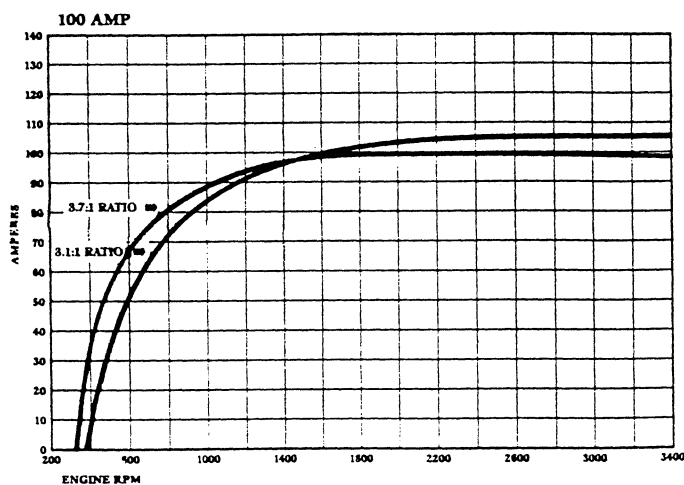
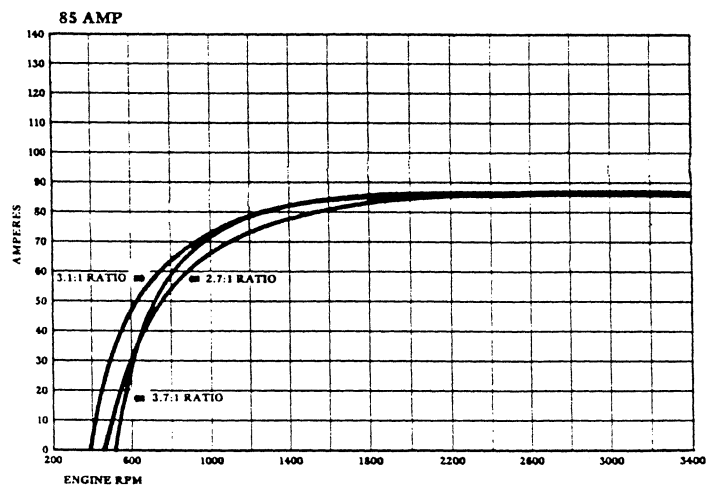
ENGINE STD./OPT.	4.3L V6 5.7L V8	5.0L V8	4.3L V6 5.7L V8	5.0L V8	6.2L V8	4.3L V6 5.7L V8	5.0L V8	6.2L V8	4.3L V6 5.7L V8	5.0L V8	6.2L V8	4.3L V6 5.7L V8	5.0L V8	6.2L V8	7.4L V8	5.7L V8	6.2L V8	7.4L V8	5.7L V8	6.2L V8
STANDARD BATTERY: Cold Cranking Amps @ 0°F @ -20°F Reserve Capacity Minutes @ 80°F	630 490 115	630 490 115	630 490 115	630 490 115	Two at 570 425 90	630 490 115	630 490 115	Two at 570 425 90	630 490 115	630 490 115	Two at 570 425 90	630 490 115	630 490 115	90 115	630 490 115	630 490 115	Two at 570 425 90	630 490 115	630 490 115	Two at 570 425 90
AUXILIARY BATTERY: Cold Cranking Amps @ 0°F @ -20°F Reserve Capacity Minutes @ 80°F	TP2 540 410 115	TP2 540 410 115	TP2 540 410 115	TP2 540 410 115	— — —	TP2 540 410 115	TP2 540 410 115	— — —	TP2 540 410 115	TP2 540 410 115	— — —	TP2 540 410 115	TP2 540 410 115	— — —	TP2 540 410 115	TP2 540 410 115	— — —	TP2 540 410 115	TP2 540 410 115	— — —
STANDARD ALTERNATOR: Max. Capacity (Amps) Max. Watts @ 12 Volts Nominal Amp @ Idle (Approx.) Drive Pulley Ratio Model Number	85 1020 30 2.7:1 CS130	85 1020 30 2.7:1 CS130	85 1020 30 2.7:1 CS130	85 1020 30 2.7:1 CS130	85 1020 30 3.7:1 CS130	85 1020 30 2.7:1 CS130	85 1020 30 2.7:1 CS130	85 1020 30 3.7:1 CS130	85 1020 30 2.7:1 CS130	85 1020 30 2.7:1 CS130	85 1020 30 3.7:1 CS130	85 1020 30 2.7:1 CS130	85 1020 30 2.7:1 CS130	85 1020 30 3.7:1 CS130	85 1020 30 3.1:1 CS130	85 1020 30 2.7:1 CS130	85 1020 30 3.7:1 CS130	85 1020 30 3.1:1 CS130	85 1020 30 2.7:1 CS130	85 1020 30 3.7:1 CS130
OPTIONAL ALTERNATOR: ¹ Max. Capacity (Amps) Max. Watts @ 12 Volts Nominal Amp @ Idle (Approx.) Drive Pulley Ratio	C60 100 1200 36 3.1:1	C60 100 1200 36 3.1:1	C60 100 1200 36 3.1:1	C60 100 1200 36 3.1:1	C60 100 1200 36 3.7:1	C60 100 1200 36 3.1:1	C60 100 1200 36 3.1:1	C60 100 1200 36 3.7:1	C60 100 1200 36 3.1:1	C60 100 1200 36 3.1:1	C60 100 1200 36 3.7:1	C60 100 1200 36 3.1:1	C60 100 1200 36 3.1:1	C60 100 1200 36 3.7:1	C60 100 1200 36 3.1:1	C60 100 1200 36 3.1:1	C60 100 1200 36 3.7:1	C60 100 1200 36 3.1:1	C60 100 1200 36 3.1:1	C60 100 1200 36 3.7:1
Model Number	CS130	CS130	CS130	CS130	CS130	CS130	CS130	CS130	CS130	CS130	CS130	CS130	CS130	CS130	CS130	CS130	CS130	CS130	CS130	CS130

¹NOTE: This alternator is available only as part of noted RPO.

ALTERNATOR CURVES

TWO-WHEEL DRIVE (C) AND FOUR-WHEEL DRIVE (K)

(Refer to Alternator Chart for Availability)



/K/SIERRA PICKUP

TWO-WHEEL DRIVE (C) AND FOUR-WHEEL DRIVE (K)

BY: Reg Type Manual Trans and Automatic Trans Red Type Manual Trans Only Bold Type Automatic Trans Only

MODEL	C/K1500 REGULAR CAB SPORTSIDE/ FLETSIDE/ WIDESIDE			C/K1500 REG. CAB-EXT. CAB FLETSIDE/CLUB COUPE WIDESIDE				C/K2500 REG. CAB-EXT. CAB FLETSIDE/CLUB COUPE WIDESIDE				C/K3500 REG. CAB-EXT. CAB FLETSIDE/CLUB COUPE WIDESIDE		
MODEL NUMBER	C/K10703/E62 C/K10703/E63			C/K10903 C/K10753-C/K10953/E63				C/K20903 C/K20753-C/K20953/E63				C/K30903 C/K30953/E63		
STANDARD COOLING SYSTEM														
ENGINE	4.3L	5.0L	5.7L	4.3L	5.0L	5.7L	6.2L ¹	4.3L	5.0L	5.7L	6.2L	5.7L	7.4L	6.2L
Standard Radiator Thickness (in.)	.93	.93	1.34	.93	.93	1.34	1.58	.93	.93	1.34	1.58	1.34	2.17	1.58
Total System Cap. (gal.)	3.6	3.8	3.9	3.6	3.8	3.9	6.2	3.6	3.8	3.9	6.2	3.9	6.3	6.2
Standard Fan (No. Blades x Diameter x Pitch)	3 x 19 x 2.0			3 x 19 x 2.0	3 x 19 x 2.0	3 x 19 x 2.0	5 x 20 x 2.56	3 x 19 x 2.0	3 x 19 x 2.0	3 x 19 x 2.0	5 x 20 x 2.56	3 x 19 x 2.0	5 x 20 x 2.56	5 x 20 x 2.56
OPTIONAL COOLING SYSTEMS														
ENGINE	4.3L	5.0L	5.7L	4.3L	5.0L	5.7L	6.2L ¹	4.3L	5.0L	5.7L	6.2L	5.7L	7.4L	6.2L
AUTOMATIC TRANS.	MX0			MX0				MX0				MX1		
Radiator Thickness (in.)	.93	1.34	1.34	.93	1.34	1.34	1.58	.93	.93	1.34	1.58	1.34	2.17	1.58
Total System Cap. (gal.)	3.6	3.8	3.8	3.6	3.8	3.8	6.2	3.4	4.2	3.8	6.2	3.8	6.3	6.2
Fan (No. Blades x Diameter x Pitch)	3 x 19 x 2.0			3 x 19 x 2.0	3 x 19 x 2.0	3 x 19 x 2.0	5 x 20 x 2.56	3 x 19 x 2.0	3 x 19 x 2.0	3 x 19 x 2.0	5 x 20 x 2.56	5 x 19.5 x 2.0	5 x 20 x 2.56	5 x 20 x 2.56
OPT. H.D. RADIATOR	V01 ²			V01 ²				V01 ²				V01 ²	V01 ²	—
Radiator Thickness (in.)	1.34	.93	1.34	1.34	.93	1.34	2.17	1.34	.93	1.34	2.17	1.34	2.17	—
Total System Cap. (gal.)	3.6	4.2	3.9	3.6	4.2	3.9	6.2	3.4	4.2	3.9	6.3	3.8	6.3	—
Fan (No. Blades x Diameter x Pitch)	5 x 19.5 x 2.0			5 x 19.5 x 2.0	5 x 19.5 x 2.0	5 x 19.5 x 2.0	5 x 20 x 2.56	5 x 19.5 x 2.0	5 x 19.5 x 2.0	5 x 19.5 x 2.0	5 x 20 x 2.56	5 x 19.5 x 2.0	5 x 20 x 2.56	—
OPT. AIR CONDITIONING	C60			C60				C60				C60		
Radiator Thickness (in.)	1.34	.93	1.34	1.34	.93	1.34	1.58	1.34	.93	1.34	1.58	1.34	2.17	2.17
Total System Cap. (gal.)	3.6	3.8	3.9	3.6	3.8	3.9	6.2	3.4	4.2	3.9	6.2	3.9	6.3	6.2
Fan (No. Blades x Diameter x Pitch)	5 x 19.5 x 2.0			5 x 19.5 x 2.0	5 x 19.5 x 2.0	5 x 19.5 x 2.0	5 x 20 x 2.56	5 x 19.5 x 2.0	5 x 19.5 x 2.0	5 x 19.5 x 2.0	5 x 20 x 2.56	5 x 19.5 x 2.0	5 x 20 x 2.56	5 x 20 x 2.0
OPT. ENGINE OIL COOLER	KC4			KC4	KC4	KC4	—	KC4	KC4	KC4	—	—	KC4	—
Radiator Thickness (in.)	1.34			1.34	1.34	1.34	—	1.34	1.34	1.34	—	—	2.17	—
Total System Cap. (gal.)	3.6	3.9	3.9	3.6	3.9	3.9	—	3.8	4.2	3.9	—	—	6.2	—
Fan (No. Blades x Diameter x Pitch)	5 x 19.5 x 2.0			5 x 19.5 x 2.0	5 x 19.5 x 2.0	5 x 19.5 x 2.0	—	5 x 19.5 x 2.0	5 x 19.5 x 2.0	5 x 19.5 x 2.0	—	—	5 x 20 x 2.56	—
OPT. TRANS. OIL COOLER AND ENG. OIL COOLER	KC4/V02			KC4/V02	KC4/V02	KC4/V02	—	KC4/V02	KC4/V02	KC4/V02	—	—	KC4/V02	—
Radiator Thickness (in.)	1.34			1.34	1.34	1.34	—	1.34	1.34	1.34	—	—	2.17	—
Total System Cap. (gal.)	3.6	3.9	3.9	3.6	3.9	3.9	—	3.9	3.9	3.9	—	—	6.2	—
Fan (No. Blades x Diameter x Pitch)	5 x 19.5 x 2.0			5 x 19.5 x 2.0	5 x 19.5 x 2.0	5 x 19.5 x 2.0	—	5 x 19.5 x 2.0	5 x 19.5 x 2.0	5 x 19.5 x 2.0	—	—	5 x 20 x 2.56	—
OPT. H.D. RADIATOR AND ENGINE OIL COOLER	V02 ³			V02 ³				V02 ³				—	V02 ³	—
Radiator Thickness (in.)	1.34	1.34	1.34	1.34	1.34	1.34	2.17	1.34	1.34	1.34	2.17	—	2.17	—
Total System Cap. (gal.)	3.9	3.9	3.9	3.9	3.9	3.9	6.2	3.9	3.9	3.9	6.2	—	6.2	—
Fan (No. Blades x Diameter x Pitch)	5 x 19.5 x 2.0	5 x 19.5 x 2.0	5 x 19.5 x 2.0	5 x 19.5 x 2.0	5 x 19.5 x 2.0	5 x 19.5 x 2.0	5 x 20 x 2.56	5 x 19.5 x 2.0	5 x 19.5 x 2.0	5 x 19.5 x 2.0	5 x 20 x 2.56	—	5 x 19.5 x 2.56	—
OPT. AIR CONDITIONING AND TRANS. OIL COOLER	—	—	—	—	—	—	—	—	—	—	—	—	—	—
Radiator Thickness (in.)	—	—	—	—	—	—	2.17	—	—	—	2.17	—	—	—
Total System Cap. (gal.)	—	—	—	—	—	—	5.2	—	—	—	5.2	—	—	—
Fan (No. Blades x Diameter x Pitch)	—	—	—	—	—	—	5 x 20 x 2.56	—	—	—	5 x 20 x 2.56	—	—	—

¹6.2L Diesel N/A in California on C/K1500 Series Model ²N/A C60 Air or V02 Cooling ³Included w/Z82 Trailing

TWO-WHEEL DRIVE (C)

MODEL	C1500 REG. CAB SPORTSIDE/ FLEETSIDE/ WIDESIDE		C1500 REG. CAB FLEETSIDE/ WIDESIDE		C1500 EXT. CAB FLEETSIDE/ CLUB COUPE WIDESIDE		C2500 REG. CAB FLEETSIDE/ WIDESIDE			C2500 EXT. CAB FLEETSIDE/ CLUB COUPE WIDESIDE			C3500 REGULAR CAB FLEETSIDE/ WIDESIDE		C3500 EXT. CAB FLEETSIDE/ CLUB COUPE WIDESIDE				
	MODEL NUMBER	C10703/ E62	C10703/ E63	C10903/E63		C10753/ E63	C10953/ E63	C20903/E63		C20753/ E63	C20953/E63		C30903		C30953				
EXTERIOR DIMENSIONS																			
BODY:																			
Wheelbase (in.)	117.5		131.5		141.5		155.5		131.5			141.5		155.5		131.5		155.5	
Overall Length (in.) w/o Rear Bumper	194.0	194.1	212.6		223.0	237.0	212.6			223.0	237.0	212.6	212.6		212.6				
Overall Height (in.) Nominal	70.4		70.4		70.6		73.0	75.5	74.0	74.0	75.6	75.5		75.6					
Maximum Width (in.)	77.1	76.8	76.8		76.8		76.8			76.8			76.8	94.2	76.8	94.2			
Bumper To Axle—Front Rear (in.)	34.9 47.25	34.9 47.27	34.9	52.2	34.9	47.27	34.9	52.2	34.9	47.27	34.9	52.2	34.9	52.2	34.9	52.2			
Cab Axle (in.)	41.8		55.9		41.8		55.9		41.8			55.9		55.9		55.9			
Cab To End of Frame (in.)	78.7		97.6		78.7	97.6	97.6			78.7	97.6	97.6	97.6		97.6				
Bumper To Back of Cab (in.)	110.6		110.6		134.6		110.6			134.6			110.6		134.6				
Ground To Top of Rear Load Floor (in.)	29.0		29.0		29.0		31.6	34.2	31.6	31.6	34.0	34.0		34.0					
Ground Clearance—Front Rear (in.)	7.0 8.4	7.0 8.4	7.0	8.4	7.2 7.1	7.8 8.1	7.8 8.1	7.8 8.1	7.9 7.7	7.9 7.7	8.4 8.0	8.4 8.1	7.9 7.6	8.4 8.0	7.9 7.6				
CARGO BOX:																			
Length (in.)	78.7		97.6		78.7	97.6	97.6			78.6	97.6	97.6	97.6		97.6				
Inside Width At Top (in.) (Rear)	49.1	61.9	61.9		61.9		61.9			61.9			61.9		61.9				
Inside Width at Floor (in.)	49.1	64.7	64.7		64.7		64.7			64.7			64.7		64.7				
Inside Width at Wheelhousing (in.)	49.1		49.1		49.1		49.1			49.1			49.1		49.1				
Inside Height (in.)	19.3		19.3		19.3		19.3			19.3			19.3		19.3				
Tailgate Width (in.) Top	50.9	62.0	62.0		62.0		62.0			62.0			62.0		62.0				
INTERIOR DIMENSIONS																			
CAB:																			
Headroom (in.)	40.0		40.0		40.0		40.0		40.0			40.0		40.0		40.0			
Legroom (in.)	41.7		41.7		41.7		41.7			41.7			41.7		41.7				
Shoulder Room (in.)	66.0		66.0		66.0		66.0			66.0			66.0		66.0				
Extended Cab Area Volume (cu. ft.) w/o Rear Seat	—		—		40.5		—			40.5			—		40.5				
FUEL TANK																			
Std. Tank Nominal (gal.)	25.0		34.0		25.0	34.0	34.0			25.0	34.0	34.0		34.0					
Location of Tank	Inboard LH Frame Rail		Inboard LH Frame Rail		Inboard LH Frame Rail		Inboard LH Frame Rail			Inboard LH Frame Rail			Inboard LH Frame Rail		Inboard LH Frame Rail				
Location of Filler	Left Side		Left Side		Left Side		Left Side			Left Side			Left Side		Left Side				

FOUR-WHEEL DRIVE (K)

MODEL	K1500 REG. CAB SPORTSIDE/ FLEETSIDE/ WIDESIDE		K1500 REG. CAB FLEETSIDE/ WIDESIDE		K1500 EXT. CAB FLEETSIDE/ CLUB COUPE WIDESIDE		K2500 REG. CAB FLEETSIDE/ WIDESIDE		K2500 EXT. CAB FLEETSIDE/ CLUB COUPE WIDESIDE			K3500 REG. CAB FLEETSIDE/ WIDESIDE		K3500 EXT. CAB FLEETSIDE/ CLUB COUPE WIDESIDE		
	MODEL NUMBER	K10703/ E62	K10703/ E63	K10903/E63		K10753/ E63	K10953/ E63	K20903/E63		K20753/ E63	K20953/E63		K30903		K30953	
									C6P	E63		C6P		R05		R05
EXTERIOR DIMENSIONS																
BODY:																
Wheelbase (in.)	117.5		131.5		141.5	155.5	131.5		141.5	155.5	131.5	131.5		155.5		
Overall Length (in.) w/o Rear Bumper	194.0	194.1	212.6		223.0	237.0	212.6		223.0	237.0	212.6	212.6		212.6		
Overall Height (in.) Nominal	73.8		73.8		73.8		74.3	75.8	74.4	74.4	75.8	75.8		75.8		
Maximum Width (in.)	77.1	76.8	76.8		76.8		76.8		76.8			76.8	94.2	76.8	94.2	
Bumper To Axle—Front Rear (in.)	34.9 47.25	34.9 47.27	34.9 52.2	34.3 47.27	34.9 52.2	34.9 52.2	34.9 47.27	34.9 52.2	34.9 47.27	34.9 52.2	34.9 52.2	34.9 52.2	34.9 52.2	34.9 52.2		
Cab Axle (in.)	41.8		55.9		41.8	55.9	55.9		41.8	55.9		55.9		55.9		
Cab To End of Frame (in.)	78.7		97.6		78.7	97.6	97.6		78.7	97.6		97.6		97.6		
Bumper To Back of Cab (in.)	110.6		110.6		134.6		110.6		134.6			110.6		134.6		
Ground To Top of Rear Load Floor (in.)	32.4		32.4		32.4		32.9	34.4	32.9	32.9	34.4	34.4		34.4		
Ground Clearance—Front Rear (in.)	8.6 9.0	8.6 9.0	8.6 9.0	9.2 9.6	8.7 7.7	7.8 8.1	9.2 8.2	9.2 8.1	9.2 8.1	9.2 8.1	9.2 8.1	7.2 7.4	9.2 8.1	7.2 7.4		
CARGO BOX:																
Length (in.)	78.7		97.6		78.7	97.6	97.6		97.6			97.6		97.6		
Inside Width At Top (in.) (Rear)	49.1	61.9	61.9		61.9		61.9		61.9			61.9		61.9		
Inside Width at Floor (in.)	49.1	64.7	64.7		64.7		64.7		64.7			64.7		64.7		
Inside Width at Wheelhousing (in.)	49.1		49.1		49.1		49.1		49.1			49.1		49.1		
Inside Height (in.)	19.3		19.3		19.3		19.3		19.3			19.3		19.3		
Tailgate Width (in.) Top	50.9	62.0	62.0		62.0		62.0		62.0			62.0		62.0		
INTERIOR DIMENSIONS																
CAB:																
Headroom (in.)	40.0		40.0		40.0		40.0		40.0			40.0		40.0		
Legroom (in.)	41.7		41.7		41.7		41.7		41.7			41.7		41.7		
Shoulder Room (in.)	66.0		66.0		66.0		66.0		66.0			66.0		66.0		
Extended Cab Area Volume (cu. ft.) w/o Rear Seat	—		—		40.5		—		40.5			—		40.5		
FUEL TANK																
Std. Tank Nominal (gal.)	25.0		34.0		25.0	34.0	34.0		25.0	34.0	34.0		34.0		34.0	
Location of Tank	Inboard LH Frame Rail		Inboard LH Frame Rail		Inboard LH Frame Rail		Inboard LH Frame Rail		Inboard LH Frame Rail			Inboard LH Frame Rail		Inboard LH Frame Rail		
Location of Filler	Left Side		Left Side		Left Side		Left Side		Left Side			Left Side		Left Side		

OPTIONS

1990

C/K/SIERRA PICKUP

KEY: S Standard
 O Optional
 — Not Available

- | | | | |
|---------------|----------------|----------------|----------------|
| 1. C10703/E62 | 6. C10953/E63 | 11. K10703/E62 | 16. K20903/E63 |
| 2. C10703/E63 | 7. C10953/E63 | 12. K10703/E63 | 17. K20753/E63 |
| 3. C10903/E63 | 8. C10953/E63 | 13. K10903/E63 | 18. K20953/E63 |
| 4. C10753/E63 | 9. C10953/E63 | 14. K10753/E63 | 19. K30903/E63 |
| 5. C10953/E63 | 10. C10953/E63 | 15. K10953/E63 | 20. K30953/E63 |

OPTION	CODE	DESCRIPTION	RESTRICTIONS	MODELS																			
				2-WHEEL DRIVE (C)										4-WHEEL DRIVE (K)									
				1	2	3	4	5	6	7	8	9	10	11	12	13	14	15	16	17	18	19	20
AIR CONDITIONING	C60	Incls 100 Amp Alternator		O	O	O	O	O	O	O	O	O	O	O	O	O	O	O	O	O			
AXLES, REAR Locking Differential	G80	(See Powertrains)																					
BATTERY Auxiliary	TP2	Delco Freedom 540 Cold Cranking Amps	Incl w/Z81 Camper; N/A B3J Diesel Equipment	O	O	O	O	O	O	O	O	O	O	O	O	O	O	O	O	O			
BUMPER EQUIPMENT Bumper, Painted	V43	Rear Step	Reqs E63 Body	O	O	O	O	O	O	O	O	O	O	O	O	O	O	O	O	O			
Bumper, Chromed	VB3	Rear Step w/Sub Strip	Reqs Z62 Scottsdale/SLX or YE9 Silverado/SLE or VG3	O	O	O	O	O	O	O	O	O	O	O	O	O	O	O	O	O			
Bumper, Chromed	VG3	Front Deluxe w/Sub Strip	Reqs E62 Sportside	O																			
Guards, Front Bumper	V27		Reqs YE9 Silverado/SLE or Z62 Scottsdale/SLX Trim. N/A BYP Sport Equipment Package	O	O	O	O	O	O	O	O	O	O	O	O	O	O	O	O	O			
CAMPER SPECIAL CHASSIS EQUIPMENT	Z81	Basic Camper Group Incls DF2 Mirrors, Camper Wiring Harness, also TP2 (Aux) Battery w/o B3J Diesel Equipment	N/A D44 or D45 Mirrors; w/MX0 or MX1 Trans Reqs V02 Cooling; MM4 or MM5 Trans Reqs V01 Cooling or C60 Air; w/o B3J Diesel or LB4 Engine and C6P Reqs KC4 Cooling							O	O	O	O					O	O	O	O		
CARRIER, SPARE WHEEL AND TIRE	P13	Side Mounted	N/A C/K10703, C/K10753, C/K20753, N/A C/K3500 w/R05 Wheels		O		O	O	O	O	O			O		O	O	O	O	O			
CHASSIS	F44	Heavy-Duty	Reqs XCN, XFL, XFM or XFN Tires on C10903; K10703 Reqs 3.42 Axle; (N/A PF4 Wheels)		O									O	O	O	O						
COLD-CLIMATE PACKAGE	V10	Incls Engine Block Heater, Special Insulation and Anti-Freeze Protection to -32 Degrees	N/A B3J Diesel	O	O	O	O	O	O	O	O	O	O	O	O	O	O	O	O	O			
CONVENIENCE PACKAGE Driver's	ZQ3	Incls Electronic Speed Control and Comfortilt Steering Wheel		O	O	O	O	O	O	O	O	O	O	O	O	O	O	O	O	O			
Operating	ZQ2	Incls Power Door Locks and Power Windows		O	O	O	O	O	O	O	O	O	O	O	O	O	O	O	O	O			
COOLING SYSTEM: Engine Oil Cooler	KC4		N/A w/B3J Diesel Eng; Reqs V02 Cooling w/MX0 or MX1 Trans w/L05 or L19 Eng; Incl w/Z82 Trailering	O	O	O	O	O	O	O	O	O	O	O	O	O	O	O	O	O			
Radiator, Heavy-Duty	V01		N/A V02 Cooling; C1500 w/C60 Air Reqs LH6 Diesel and 3.08 or 3.42 Axle (K1500 and C/K2500 w/C60 Air Reqs LH6 and 3.42 only); N/A LL4 Diesel w/3.73 Axle and KC4 Engine Oil Cooler on C/K2500; N/A C/K3500 w/C60 or LL4 Diesel	O	O	O	O	O	O	O	O	O	O	O	O	O	O	O	O	O			
Radiator and Transmission Oil Cooler, Heavy-Duty	V02		Reqs MX0 or MX1 Trans; Incl w/Z82 Trailering	O	O	O	O	O	O	O	O	O	O	O	O	O	O	O	O	O			

KEY: S Standard
O Optional
— Not Available

- | | | | |
|---------------|----------------|----------------|----------------|
| 1. C10703/E62 | 6. C20903/E63 | 11. K10703/E62 | 16. K20903/E63 |
| 2. C10703/E63 | 7. C20753/E63 | 12. K10703/E63 | 17. K20753/E63 |
| 3. C10903/E63 | 8. C20953/E63 | 13. K10903/E63 | 18. K20953/E63 |
| 4. C10753/E63 | 9. C30903/E63 | 14. K10753/E63 | 19. K30903/E63 |
| 5. C10953/E63 | 10. C30953/E63 | 15. K10953/E63 | 20. K30953/E63 |

OPTION	CODE	DESCRIPTION	RESTRICTIONS	MODELS																			
				2-WHEEL DRIVE (C)										4-WHEEL DRIVE (K)									
				1	2	3	4	5	6	7	8	9	10	11	12	13	14	15	16	17	18	19	20
DEFOGGER	C49	Rear Window	N/A A28 Window or BYP Sport Pkg; Reqs YE9 Silverado/SLE or Z62 Scottsdale/SLX	O	O	O	O	O	O	O	O	O	O	O	O	O	O	O	O	O			
ENGINES		(See Powertrains)		S	S	S	S	S	S	S	—	S	S	S	S	S	S	S	S	—			
4.3-liter V6 EFI	LB4			O	O	O	O	O	O	O	—	O	O	O	O	O	O	O	O	—			
5.0-liter V8 EFI	L03			O	O	O	O	O	O	O	—	O	O	O	O	O	O	O	O	—			
5.7-liter V8 EFI	L05			O	O	O	O	O	O	O	—	O	O	O	O	O	O	O	O	—			
7.4-liter V8 EFI	L19			—	O	—	—	—	—	—	S	S	—	—	—	—	—	—	S	S			
6.2-liter V8 Diesel	LH6			—	—	O	O	O	O	O	—	—	—	O	O	O	O	O	—	—			
6.2-liter V8 H.D. Diesel	LL4			—	—	—	—	—	—	—	O	O	—	—	—	O	O	—	—	O	O		
FILLER CAP, FUEL	N05	Locking		O	O	O	O	O	O	O	O	O	O	O	O	O	O	O	O	O			
GLASS Deep Tinted	AJ1	Incls A20 Swing-Out Quarter Windows	N/A w/A28 Sliding Rear Windows or C49 Defogger; Ext Cab/Club Coupe only	—	—	—	O	O	—	O	—	—	—	O	—	—	O	—	O	—			
HARNESS, WIRING	UY7	Trailer, Heavy-Duty 7-Lead; Incl w/Z82 Trailering		O	O	O	O	O	O	O	O	O	O	O	O	O	O	O	O	O			
LAMPS Cargo Area	UF2	Incl w/TR9 Lighting		O	O	O	O	O	O	O	O	O	O	O	O	O	O	O	O	O			
Dome and Reading	C95	Incl w/TR9 Lighting		O	O	O	O	O	O	O	O	O	O	O	O	O	O	O	O	O			
Roof Marker	U01	Incl w/R05 Wheels	N/A w/YF5 Cal Emissions	O	O	O	O	O	O	O	O	O	O	O	O	O	O	O	O	O			
LICENSE PLATE BRACKET	VK3	Front		O	O	O	O	O	O	O	O	O	O	O	O	O	O	O	O	O			
LIGHTING, AUXILIARY	TR9	Incl C95 Dome and Reading Lamp; Courtesy, Ashtray, Glove Box UF2, Cargo Area Lamp and Underhood Lamps		O	O	O	O	O	O	O	O	O	O	O	O	O	O	O	O	O			
MIRRORS, EXTERIOR (LH/RH)				O	O	O	O	O	O	O	O	O	O	O	O	O	O	O	O	O			
Below-Eye-Line Type	D44	Painted Black, 9" x 6.5"		O	O	O	O	O	O	O	O	O	O	O	O	O	O	O	O	O			
Below-Eye-Line Type	D45	Stainless Steel, 9" x 6.5"	N/A w/BYP Sport Pkg	O	O	O	O	O	O	O	O	O	O	O	O	O	O	O	O	O			
Camper Type	DF2	Stainless Steel; Incl w/Z81 Camper; 7.5" x 10.5"	N/A w/BYP Sport Pkg	O	O	O	O	O	O	O	O	O	O	O	O	O	O	O	O	O			

OPTIONS

KEY: S Standard
O Optional
— Not Available

- | | | | |
|---------------|----------------|----------------|----------------|
| 1. C10703/E62 | 6. C20903/E63 | 11. K10703/E62 | 16. K20903/E63 |
| 2. C10703/E63 | 7. C20753/E63 | 12. K10703/E63 | 17. K20753/E63 |
| 3. C10903/E63 | 8. C20953/E63 | 13. K10903/E63 | 18. K20953/E63 |
| 4. C10753/E63 | 9. C30903/E63 | 14. K10753/E63 | 19. K30903/E63 |
| 5. C10953/E63 | 10. C30953/E63 | 15. K10953/E63 | 20. K30953/E63 |

OPTION		CODE	DESCRIPTION	RESTRICTIONS	MODELS																			
					2-WHEEL DRIVE (C)										4-WHEEL DRIVE (K)									
					1	2	3	4	5	6	7	8	9	10	11	12	13	14	15	16	17	18	19	20
MOLDINGS:																								
Body Side	B84	Black; Incl w/Z62 Scottsdale/SLX w/o BYP Sport Pkg	N/A w/BYP N/A w/YE9 Silverado/SLE or B85 Moldings; N/A R05 Wheels		O	O	O	O	O	O	O	O	O	O	O	O	O	O	O	O				
Body Side	B85	Bright; Incl w/YE9 Silverado/SLE w/o BYP Sport Pkg	N/A Std Decor; N/A R05 Wheels		O	O	O	O	O	O	O	O	O	O	O	O	O	O	O	O				
OFF-ROAD CHASSIS PACKAGE	Z71	Incls Bilstein Shocks and NZZ Skid Plate	Reqs XGL or XGM Tires; N/A F60 Springs													O	O	O	O	O				
PAINT, EXTERIOR		(See Color and Trim)			S	S	S	S	S	S	S	S	S	S	S	S	S	S	S	S				
Solid	ZY1				O	O	O	O	O	O	O	O	O	O	O	O	O	O	O	O				
Conventional Two-Tone	ZY2				O	O	O	O	O	O	O	O	O	O	O	O	O	O	O	O				
Special Two-Tone	ZY3				O	O	O	O	O	O	O	O	O	O	O	O	O	O	O	O				
Deluxe Two-Tone	ZY4				O	O	O	O	O	O	O	O	O	O	O	O	O	O	O	O				
RADIO EQUIPMENT					O	O	O	O	O	O	O	O	O	O	O	O	O	O	O	O				
Radio Delete	UL5				O	O	O	O	O	O	O	O	O	O	O	O	O	O	O	O				
Electronically-Tuned AM/FM Stereo Radio w/Seek-Scan and Digital Clock	UM7	12 Presets, Digital Display, Two Front/Two Rear 4" x6" ERS Speakers, 26 Watts Total Power Output	(Std on all GMC models)		O	O	O	O	O	O	O	O	O	O	O	O	O	O	O	O				
Electronically-Tuned AM/FM Stereo Radio w/Seek-Scan, Stereo Cassette Tape and Digital Clock	UM6	12 Presets, Digital Display, Two Front/Two Rear 4" x6" ERS Speakers, 26 Watts Total Power Output			O	O	O	O	O	O	O	O	O	O	O	O	O	O	O	O				
Electronically-Tuned AM Stereo/FM Stereo Radio w/Seek-Scan, Stereo Cassette Tape w/Search-Repeat, Graphic Equalizer and Digital Clock	UX1	12 Presets, Digital Display, Two Front/Two Rear ERS Speakers, 26 Watts Total Power Output			O	O	O	O	O	O	O	O	O	O	O	O	O	O	O	O				
SCOTTSDALE/SLX	Z62	(See Trim Level Section)			O	O	O	O	O	O	O	O	O	O	O	O	O	O	O	O				
SEATS																								
Rear Folding Bench	AM7	Incl w/Front Bucket or Split Bench Seats on Ext Cab/Club Coupe Models only					O	O		O	O		O	O		O	O		O	O				
SHOCK ABSORBERS																								
Front and Rear, Heavy-Duty	F51	Incl w/Z82 Trailering	C/K 1500 only; N/A Z71 Off-Road Chassis or ZQ8 Sport Suspension		O	O	O	O								O	O	O	O					
SILVERADO/SLE	YE9	(See Trim Level Section)			O	O	O	O	O	O	O	O	O	O	O	O	O	O	O	O				
SKID PLATE	NZZ	Off-Road; Incl w/Z71 Off-Road Chassis Pkg	K Models only													O	O	O	O	O				

OPTIONS

KEY: S Standard
O Optional
— Not Available

- | | | | |
|---------------|----------------|----------------|----------------|
| 1. C10703/E62 | 6. C20903/E63 | 11. K10703/E62 | 16. K20903/E63 |
| 2. C10703/E63 | 7. C20753/E63 | 12. K10703/E63 | 17. K20753/E63 |
| 3. C10903/E63 | 8. C20953/E63 | 13. K10903/E63 | 18. K20953/E63 |
| 4. C10753/E63 | 9. C30903/E63 | 14. K10753/E63 | 19. K30903/E63 |
| 5. C10953/E63 | 10. C30953/E63 | 15. K10953/E63 | 20. K30953/E63 |

OPTION	CODE	DESCRIPTION	RESTRICTIONS	MODELS																			
				2-WHEEL DRIVE (C)										4-WHEEL DRIVE (K)									
				1	2	3	4	5	6	7	8	9	10	11	12	13	14	15	16	17	18	19	20
SUSPENSION, SPORT	ZQ8	Incls Bilstein Gas-Filled Shocks and 12.7:1 Ratio Steering	Reqs XCN Tires; w/LB4 or L05 Engine Reqs 3.42 or 3.73 Rear Axle; w/L03 Engine Reqs 3.42 Rear Axle. N/A F51 Shocks, P13 Carrier, P01 Wheel Covers On N90 Wheels	O	O	O	O	O															
TIRE EQUIPMENT		(See Wheels and Tires for Details)	(Spare Tire is Optional on C/K 2500 and 3500 Models).																				
P225/75R15	XEV YEV ZEV			O	O	O																	
P225/75R15	XET YET ZET			S	S	S																	
P235/75R15	XFL YFL ZFL		XFL and YFL Tires are Req'd w/BYP w/o ZQ8	O	O	O	S	S															
P235/75R15	XFM YFM ZFM			O	O	O	O	O															
P235/75R15	XFN YFN ZFN			O	O	O	O	O															
P275/60R15	XCN YCN ZCN		Reqs ZQ8	O	O	O	O	O															
LT225/75R16C	XHE YHE ZHE		Avail C Models as R05 only (Incls YHP or YHR Rear Tires only)										O	O	S	S	S						
LT225/75R16C	XHJ YHJ ZHJ												O	O	O								
LT225/75R16C	XHN YHN ZHN												O	O	O								
LT225/75R16D	XHP YHP ZHP							S	S	S	O	O					S		O	O			
LT225/75R16D	XHR YHR ZHR		Avail K3500 Models as R05 only														O		O	O			
LT245/75R16C	XBK YBK ZBK																S	S	S	S			
LT245/75R16C	XBN YBN ZBN																O	O	O	O			
LT245/75R16C	XBX YBX ZBX																O	O	O	O			
LT245/75R16E	XHH YHH ZHH		XHH Tires are Opt w/YGK Rear Tires (C Models only).					O	O	O	S	S						O	O	S	S		
LT245/75R16E	XGK YGK ZGK		N/A w/R05															O	O	O	O		
LT265/75R16C	XGL YGL ZGL		Std w/BYP											O	O	O	O						
LT265/75R16C	XGM YGM ZGM													O	O	O	O						
7.50-16D	XDE YDE ZDE		Avail C/K3500 Models as R05 only										O	O						O	O		
7.50-16D	XDL YDL ZDL		Avail K3500 Models as R05 only																		O	O	

*Optional on R05 models only (includes YHP or YHR rear tires on C models; includes YHP rear tires only on K models).

1990
C/K/SIERRA PICKUP

OPTIONS

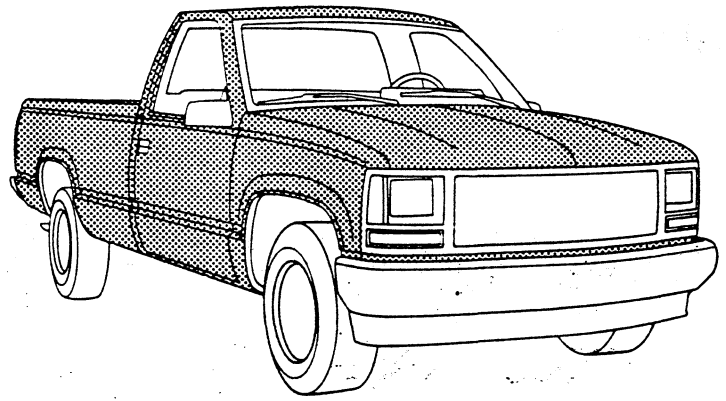
KEY: S Standard
O Optional
— Not Available

- | | | | |
|---------------|----------------|----------------|----------------|
| 1. C10703/E62 | 6. C20903/E63 | 11. K10703/E62 | 16. K20903/E63 |
| 2. C10703/E63 | 7. C20753/E63 | 12. K10703/E63 | 17. K20753/E63 |
| 3. C10903/E63 | 8. C20953/E63 | 13. K10903/E63 | 18. K20953/E63 |
| 4. C10753/E63 | 9. C30903/E63 | 14. K10753/E63 | 19. K30903/E63 |
| 5. C10953/E63 | 10. C30953/E63 | 15. K10953/E63 | 20. K30953/E63 |

OPTION	CODE	DESCRIPTION	RESTRICTIONS	MODELS																										
				2-WHEEL DRIVE (C)										4-WHEEL DRIVE (K)																
				1	2	3	4	5	6	7	8	9	10	11	12	13	14	15	16	17	18	19	20							
TRAILERING SPECIAL EQUIPMENT, HEAVY-DUTY	Z82	Incls UY7 Wiring, VR4 Hitch, V02 Trans Oil Cooler and F51 Shocks, Incls. KC4 Cooler w/o B3j Diesel Equip	N/A 2.73 Rear Axle; w/LB4 Engine N/A 3.08 Rear Axle; Reqs VB3 or V43 Bumpers and MX0 or MX1 Trans	O	O	O	O	O	O	O	O	O	O	O	O	O	O	O	O	O	O	O	O	O	O	O	O	O	O	O
TRANSMISSIONS	MM4 MM5 MX0 MX1	(See Powertrains) 4-Speed Manual 5-Speed Manual w/Overdrive 4-Speed Automatic w/Overdrive 3-Speed Automatic																												
WHEEL TRIM Wheel Covers	P01		N/A w/YE9 Silverado/SLE, Z62 Scottsdale/SLX or ZQ8 Sport Suspension; N/A w/BYP Sport Pkg; N/A w/R05 Wheels	O	O	O	O	O	O	O	O	O	O	O	O	O	O	O	O	O	O	O	O	O	O	O	O	O	O	O
Trim Rings	P06		Reqs R05 Dual Rear Wheels																											
WHEELS Aluminum, 15" x 7"	N90	Incl w/BYP Sport Pkg w/o ZQ8 (GMC only)	C1500 only	O	O	O	O	O																						
Aluminum, 16" x 7"	PF4	Incl w/BYP Sport Pkg	K1500 only; N/A F44 H.D. Chassis																		O	O								
WHEELS Dual Rear	R05	Incls U01 Lamps	w/MX1 Trans Reqs V02 Heavy-Duty Radiator and Transmission Oil Cooler																											
WINDOWS Sliding Rear	A28		N/A w/AJ1 Tinted Glass on C/K Extended Cabs; N/A C49 Defogger	O	O	O	O	O	O	O	O	O	O	O	O	O	O	O	O	O	O	O	O	O	O	O	O	O	O	O
Swing-Out Quarter	A20	Incl w/AJ1 or w/YE9 Silverado/SLE	Ext Cabs only																											
WORK TRUCK PACKAGE (Chevrolet Models Only)	VLA	Incls LB4 Engine, MM5 trans., and Front Bench Seat; Cheyenne Trim Level also Incls New Grille Painted Dark Argent Metallic, Bumper, Bumper Fillers, Air Deflector, and Specific Decals for Identification																												

**SOLID COLOR
(ZY1)**

Solid color paint (ZY1) is standard on all models. All painted areas of the cab, front end sheet metal, and box are the same color. Outlined block "Chevrolet/GMC" decal lettering is applied to the tailgate. (A bright trim plate with lettering is applied on Fleetside/Wideside models when the Silverado/SLE Model Option is ordered.) Below are the interior trim color and exterior paint combinations recommended by Chevrolet/GMC. They are the only available interior and exterior combinations allowed. For further information, refer to Seats and Interior Trim pages as well as the Ordering Guide.

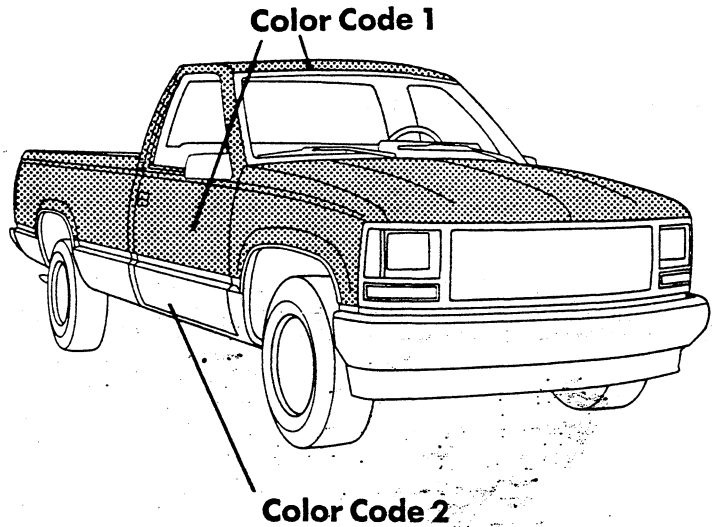


KEY: Red Screen—Not Available on C/K Extended Cab Club Coupe models

EXTERIOR COLORS		STRIPE COLORS	INTERIOR COLORS				
COLOR 1	COLOR 2	D85	Beige	Blue	Garnet	Gray	Saddle
20 Onyx Black	—	Silver				•	
	—	Gold					•
	—	Vermillion			•		
	—	Copper Beige	•				
27 Smoke Blue Met.	—	Lt. Blue		•			
	—	Silver				•	
30 Catalina Blue Met.	—	Lt. Blue		•			
	—	Copper Beige				•	
50 Summit White	—	Lt. Blue		•		•	
	—	Gold	•				•
	—	Vermillion			•		
52 Adobe Gold Met.	—	Vermillion					•
58 Sandstone Met.	—	Copper Beige	•				
68 Caramel Brown Met.	—	Vermillion	•				•
70 Flame Red	—	Gold					•
	—	Vermillion			•		
	—	Silver				•	
94 Crimson Red Met.	—	Gold			•		•
	—	Silver				•	
	—	Copper Beige	•				
96 Quicksilver Met.	—	Lt. Blue		•		•	
	—	Vermillion			•		

CONVENTIONAL TWO-TONE (ZY2)

Conventional two-tone (ZY2) paint colors are available on all models. Color code 1 is applied to the areas above the lower styling crease line (including the cab roof). Color code 2 is applied to the areas below. Outlined block "Chevrolet/ GMC" decal lettering is applied to the tailgate. (A bright trim plate with lettering is applied on Fleetside/Wideside models when the Silverado/SLE Model Option is ordered.) Below are the interior trim color and exterior paint combinations recommended by Chevrolet/GMC. They are the only available interior and exterior combinations allowed. For further information, refer to Seats and Interior Trim pages as well as the Ordering Guide.

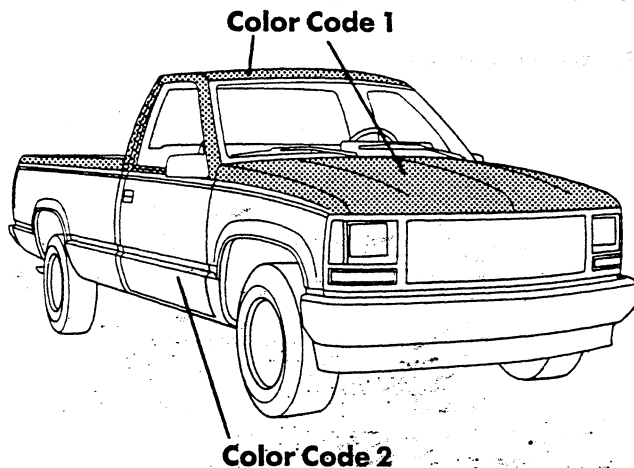


KEY: Red Screen—Not Available on C/K Extended Cab/Club Coupe Pickup models
Bold Type—Not Available on K3500 Models or K2500 Models w/C6P

EXTERIOR COLORS		STRIPE COLORS	INTERIOR COLORS				
COLOR 1	COLOR 2	D85	Beige	Blue	Garnet	Gray	Saddle
20 Onyx Black	52 Adobe Gold Met.	Gold					•
	96 Quicksilver Met.	Silver				•	
	70 Flame Red	Vermillion			•	•	
	68 Caramel Brown Met.	Gold					•
	58 Sandstone Met.	Copper Beige		•			
	50 Summit White	Silver				•	
27 Smoke Blue Met.	20 Onyx Black	Light Blue		•			
	20 Onyx Black	Silver				•	
	30 Catalina Blue Met.	Light Blue		•			
	50 Summit White	Silver				•	
	50 Summit White	Light Blue		•			
30 Catalina Blue Met.	27 Smoke Blue Met.	Light Blue		•			
	96 Quicksilver Met.	Silver		•		•	
	50 Summit White	Light Blue		•			
50 Summit White	20 Onyx Black	Gold					•
	20 Onyx Black	Lt. Blue				•	
	20 Onyx Black	Vermillion			•		
	30 Catalina Blue Met.	Lt. Blue		•			
	27 Smoke Blue Met.	Lt. Blue		•			
	94 Crimson Red Met.	Vermillion			•		
	70 Flame Red	Vermillion			•		
	52 Adobe Gold Met.	Gold					•
52 Adobe Gold Met.	20 Onyx Black	Vermillion					•
	94 Crimson Red Met.	Vermillion			•		
	68 Caramel Brown Met.	Dk. Brown					•
58 Sandstone Met.	20 Onyx Black	Copper Beige	•				
	68 Caramel Brown Met.	Vermillion	•				
68 Caramel Brown Met.	52 Adobe Gold Met.	Gold					•
	58 Sandstone Met.	Gold	•				
70 Flame Red	20 Onyx Black	Gold			•		
	20 Onyx Black	Silver				•	
	50 Summit White	Gold			•	•	
	96 Quicksilver Met.	Silver			•	•	
94 Crimson Red Met.	20 Onyx Black	Copper Beige				•	
	20 Onyx Black	Gold			•		
	52 Adobe Gold Met.	Gold			•		•
	96 Quicksilver Met.	Silver			•	•	
	50 Summit White	Silver			•		
96 Quicksilver Met.	20 Onyx Black	Vermillion			•	•	
	30 Catalina Blue Met.	Lt. Blue		•		•	
	94 Crimson Red Met.	Vermillion			•	•	
	70 Flame Red	Vermillion			•	•	

SPECIAL TWO-TONE (ZY3)

Special two-tone (ZY3) paint colors are available only on Fleetside/Wideside Pickup models and includes a multi-stripe decal applied over the paint break at the beltline. Color code 1 is applied to the areas above the decal (including the cab roof). Color code 2 is applied to the areas below. Outlined block "Chevrolet/GMC" decal lettering is applied to the tailgate. (A bright trim plate with lettering is applied on Fleetside/Wideside models when the Silverado/Sierra SLE Model Option is ordered.) Below are the interior trim color and exterior paint combinations recommended by Chevrolet/GMC. They are the only available interior and exterior combinations allowed. For further information, refer to Seats and Interior Trim pages as well as the Ordering Guide.



KEY: Red Screen—Not Available on C/K Extended Cab/Club Coupe Pickup models
 Bold Type—Not Available on Regular Cab K3500 Models or K2500 Models w/C6P

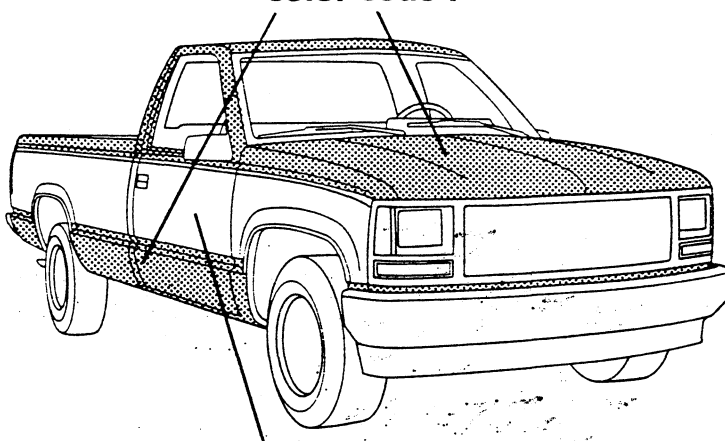
EXTERIOR COLORS		STRIPE COLORS	INTERIOR COLORS				
COLOR 1	COLOR 2	D85	Beige	Blue	Garnet	Gray	Saddle
20 Onyx Black	50 Summit White	Vermillion/Silver				•	
	52 Adobe Gold Met.³	Lt. Orange/Dk. Brown					•
	52 Adobe Gold Met.	Lt. Beige/Saddle	•				
	58 Sandstone Met.	Gold/Black	•				
	68 Caramel Brown Met.	Gold/Black					•
	70 Flame Red²	Vermillion/Dk. Carmine			•		
	70 Flame Red	Vermillion/Silver				•	
	94 Crimson Red Met.	Vermillion/Dk. Carmine			•		
96 Quicksilver Met.	Vermillion/Silver				•		
27 Smoke Blue Met.	20 Onyx Black	Lt. Blue/Dk. Blue		•			
	20 Onyx Black	Dk. Blue/Slate				•	
	30 Catalina Blue Met.	Lt. Beige/Dk. Blue		•			
	50 Summit White	Dk. Blue/Slate		•		•	
30 Catalina Blue Met.	27 Smoke Blue Met.³	Lt. Blue/Dk. Blue		•			
	50 Summit White³	Lt. Blue/Dk. Blue		•			
	96 Quicksilver Met.	Lt. Blue/Dk. Blue		•		•	
50 Summit White	20 Onyx Black	Dk. Blue/Slate			•		
	20 Onyx Black	Vermillion/Silver				•	
	20 Onyx Black	Gold/Black			•		
	27 Smoke Blue³	Lt. Blue/Dk. Blue		•			
	30 Catalina Blue Met.	Lt. Blue/Dk. Blue		•			
	52 Adobe Gold Met.	Lt. Beige/Saddle					•
	70 Flame Red²	Vermillion/Dk. Carmine			•		
	94 Crimson Red Met.	Vermillion/Dk. Carmine			•		
52 Adobe Gold Met.	20 Onyx Black	Vermillion/Dk. Carmine					•
	68 Caramel Brown Met.	Lt. Orange/Dk. Brown					•
	94 Crimson Red Met.	Vermillion/Dk. Carmine			•		
58 Sandstone Met.	20 Onyx Black	Gold/Black	•				•
	68 Caramel Brown Met.	Dk. Blue/Slate	•				
	68 Caramel Brown Met. ¹	Gold/Black	•				
68 Carmel Brown Met.	52 Adobe Gold Met.³	Lt. Orange/Dk. Brown					•
	58 Sandstone Met.	Lt. Orange/Dk. Brown	•				
70 Flame Red	20 Onyx Black	Vermillion/Dk. Carmine			•		
	20 Onyx Black	Vermillion/Silver				•	
	50 Summit White³	Vermillion/Dk. Carmine			•		
	96 Quicksilver Met.	Vermillion/Silver			•		
	96 Quicksilver Met.	Vermillion/Dk. Carmine				•	
94 Crimson Red Met.	20 Onyx Black ³	Gold/Black			•		
	50 Summit White³	Vermillion/Dk. Carmine			•		
	52 Adobe Gold Met.³	Vermillion/Dk. Carmine			•		•
	96 Quicksilver Met.	Vermillion/Dk. Carmine			•		
	96 Quicksilver Met.	Vermillion/Silver				•	
96 Quicksilver Met.	20 Onyx Black	Vermillion/Dk. Carmine			•		
	20 Onyx Black	Vermillion/Silver				•	
	30 Catalina Blue Met.	Lt. Blue/Dk. Blue		•		•	
	70 Flame Red²	Vermillion/Dk. Carmine			•		
	70 Flame Red	Vermillion/Silver				•	
	94 Crimson Red Met.	Vermillion/Dk. Carmine			•		
	94 Crimson Red Met.	Vermillion/Silver				•	

¹Available only on Regular Cab K3500 Models and K2500 w/C6P ²Available only on Extended Cab/Club Coupe models
³Not Available on Extended Cab/Club Coupe K3500 Models or K2500 Models w/C6P

Color Code 1

DELUXE TWO-TONE (ZY4)

Deluxe two-tone (ZY4) paint colors are available on Fleetside/Wideside pickup models and include the beltline decal described in Special two-tone. The cab roof, hood and pickup box above the beltline decal, as well as the area below the lower styling crease line are painted Color Code 1. The areas between the decal and the lower crease line are painted Color Code 2. Outlined block "Chevrolet/GMC" decal lettering is applied to the ailgate. (A bright trim plate with lettering is applied on Fleetside/Wideside models when the Silverado/SLE Model Option is ordered.) Below are the interior trim color and exterior paint combinations recommended by Chevrolet/GMC. They are the only available interior and exterior combinations allowed. For further information, refer to seats and Interior Trim pages as well as the Ordering Guide.



Color Code 2

KEY: Red Screen—Not Available on C K Extended Cab Pickup Models
Bold Type—Not Available on Regular Cab K3500 Models or K2500 Models w/C6P

EXTERIOR COLORS			TRIPLE COLORS			INTERIOR COLORS				
COLOR 1	COLOR 2	D85	Beige	Blue	Garnet	Gray	Saddle			
20 Onyx Black	94 Crimson Red Met.	Vermillion/Dk. Carmine			•					
	68 Caramel Brown Met.	Gold Black							•	
	52 Adobe Gold Met.	Lt. Orange/Dk. Brown								•
	52 Adobe Gold Met.	Lt. Beige/Saddle		•						
	96 Quicksilver Met.	Vermillion/Silver								•
	70 Flame Red	Vermillion/Dk. Carmine								•
	70 Flame Red	Vermillion/Silver								•
	58 Sandstone Met.	Gold Black		•						
	50 Summit White	Vermillion Silver								•
27 Smoke Blue Met	20 Onyx Black ¹	Lt. Blue/Dk. Blue		•						
	20 Onyx Black	Dk. Blue/Slate								•
	30 Catalina Blue Met. ¹	Lt. Blue/Dk. Blue		•						
	50 Summit White ¹	Dk. Blue/Slate		•						•
30 Catalina Blue Met. ¹	27 Smoke Blue Met.	Lt. Blue Dk. Blue		•						
	96 Quicksilver Met.	Lt. Blue Dk. Blue		•						•
	50 Summit White	Lt. Blue Dk. Blue		•						
50 Summit White	20 Onyx Black ¹	Dk. Blue/Slate								•
	20 Onyx Black	Vermillion/Silver								•
	30 Catalina Blue Met. ¹	Lt. Blue/Dk. Blue		•						
	27 Smoke Blue Met. ¹	Lt. Blue/Dk. Blue		•						
	94 Crimson Red Met. ¹	Vermillion/Dk. Carmine								•
	70 Flame Red ¹	Vermillion/Dk. Carmine								•
	52 Adobe Gold Met. ¹	Lt. Beige/Saddle								•
52 Adobe Gold Met.	20 Onyx Black ¹	Vermillion/Dk. Carmine								•
	94 Crimson Red Met. ¹	Vermillion/Dk. Carmine								•
	68 Caramel Brown Met. ¹	Lt. Orange/Dk. Brown								•
58 Sandstone Met.	20 Onyx Black	Gold/Black	•							•
	68 Caramel Brown Met.	Dk. Blue/Slate	•							
68 Carmel Brown Met.	52 Adobe Gold Met.	Lt. Orange/Dk. Brown								•
	58 Sandstone Met.	Lt. Orange/Dk. Brown	•							
70 Flame Red	20 Onyx Black ¹	Vermillion/Dk. Carmine								•
	20 Onyx Black	Vermillion/Silver								•
	96 Quicksilver Met. ¹	Vermillion/Silver								•
	96 Quicksilver Met.	Vermillion/Dk. Carmine								•
	50 Summit White ¹	Vermillion/Dk. Carmine								•
94 Crimson Red Met.	20 Onyx Black	Gold Black								•
	52 Adobe Gold Met.	Vermillion/Dk. Carmine								•
	96 Quicksilver Met.	Vermillion/Dk. Carmine								•
	94 Crimson Red Met.	Vermillion/Silver								•
96 Quicksilver Met.	20 Onyx Black	Vermillion/Dk. Carmine								•
	20 Onyx Black	Vermillion/Silver								•
	30 Catalina Blue Met.	Lt. Blue/Dk. Blue		•						
	94 Crimson Red Met.	Vermillion/Dk. Carmine								•
	94 Crimson Red Met.	Vermillion/Silver								•
	70 Flame Red	Vermillion Dk. Carmine								•

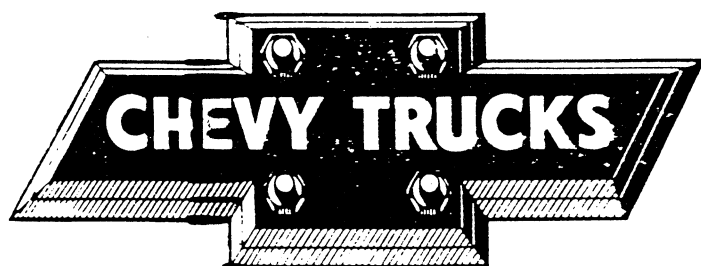
¹Not Available on Extended Cab/Club Coupe K3500 Models or K2500 Models w/C6P

1990 GENERAL MOTORS CORPORATION

INFORMATION REGARDING

CONSUMER INFORMATION TRUCK-CAMPER LOADING

PUBLISHED MAY 1989



CHEVROLET MOTOR DIVISION
GENERAL MOTORS CORPORATION
WARREN, MICHIGAN 48090



GMC TRUCK DIVISION
31 JUDSON STREET
PONTIAC, MICHIGAN 48058

1990 GENERAL MOTORS TRUCKS

Consumer Information

Truck - Camper Loading

CONSUMER INFORMATION REGULATION 575.103 issued by the National Highway Traffic Safety Administration requires manufacturers of trucks capable of accommodating slide-in camper bodies to provide information concerning proper load and proper load distribution in truck-camper applications.

This Consumer Information booklet is designed to provide basic information relating to load capabilities of 1990 General Motors Truck models which are adaptable to slide-in camper applications. Information contained herein is applicable to the truck buyer that already owns a 1990 General Motors Truck or the prospective truck purchaser.

The Regulation also provides that proper truck-camper loading information is to be maintained in truck dealerships and be made available to all prospects on request. This booklet relates to the 1990 General Motors Truck models recommended for slide-in camper applications and is to be used as a consumer information piece.

Product specifications or data contained herein may change periodically. When a revision of this booklet is supplied to truck dealers, it is the dealers' responsibility to make the revised information available to the public.

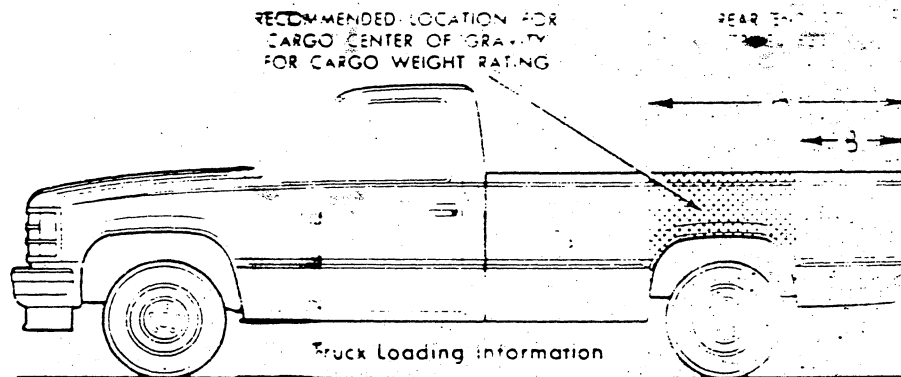
All illustrations and specifications contained in this literature are based on the latest product information available at the time of publication approval. The right is reserved to make changes at any time in prices, colors, materials, equipment, specifications and models, and also to discontinue models.

TRUCK - CAMPER LOADING

Consumer Information Regulation 571.103 requires manufacturers to include information that would accommodate side-in campers to specify the vehicle's Cargo Weight Rating (CWR) and the longitudinal limits within which the center of gravity for the cargo weight rating should be located.

Cargo Weight Rating (CWR)—The cargo weight rating of a vehicle means the value specified by the vehicle manufacturer as the cargo-carrying capacity of a vehicle in pounds, exclusive of (minus) the weight of occupants, computed as 150 pounds times the number of designated seating positions.

Longitudinal Center of Gravity Zone for CWR (CG)—The forward limit of the recommended CG Zone is determined by the application of dimension "A" measured in inches from the rear of the truck bed. The rearward limit of the recommended CG Zone is established by application of dimension "B" measured in inches from the rear of the truck bed. The recommended CG Zone lies between these points.



Model _____ Calculated Cargo Weight Rating _____
 Dimension A _____ Dimension B _____

Limitations on Recommended CG Zones

FORWARD LIMIT

- 1) Must not extend beyond the inside surface of the pickup box.
- 2) Must not exceed the cargo weight rating (GAWR).

REARWARD LIMIT

- 1) Must be no farther rearward than the inside surface of the pickup box.
- 2) Must not exceed the axle weight rating (GAWR) on the rear axle.

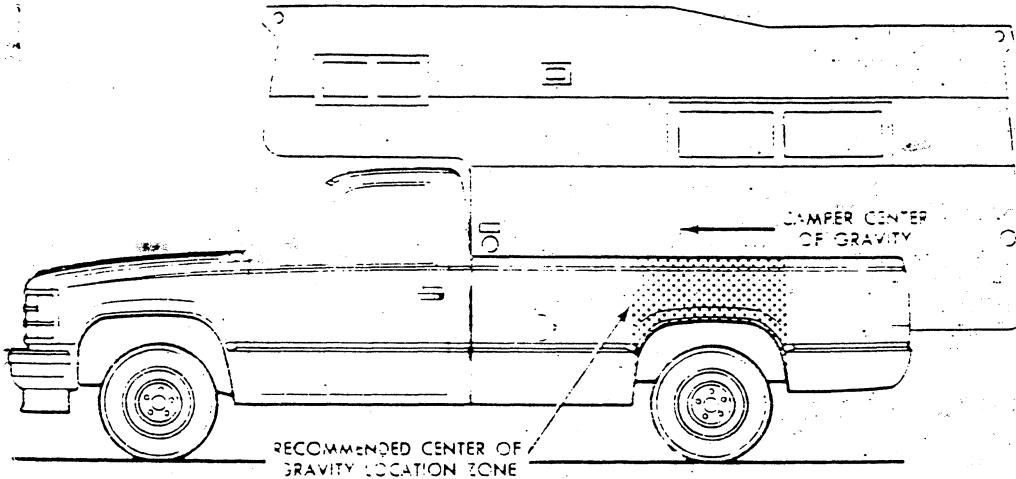
Series	Rear Axle Load Limits (% of GVWR)
S/T10/15	25%
C/K 1500	30%
C/K 2500	35%
C/K 2500/C6P, C/K 3500	40%
R/V 3500	40%

Vehicle (CG) Identification—All General Motors Corporation trucks that may be suitable for carrying a side-in camper incorporate a Truck-Camper Loading information label located on the inside of the glove box door on C/K and R/V models, or on the trailing edge of the drivers' door on S/T models. The vehicle identification number (VIN), the as-manufactured cargo weight rating (CWR) of that vehicle plus the CG limits of dimension "A" and "B" for that vehicle in inches are included.

Vehicle and Truck-Camper Loading are also discussed at length in the first few pages of the Vehicle Owners Manual.

TRUCK - CAMPER LOADING

Loading Instructions -- When the truck is used to carry a slide-in camper, the total cargo load of the truck consists of the camper manufacturer's weight figure, the weight of installed additional camper equipment not included in the camper manufacturer's weight figure, the weight of camper cargo and the weight of passengers in the camper. The total cargo load should not exceed the truck's cargo weight rating (CWR) and the camper's center of gravity should fall within the truck's recommended center of gravity zone when installed.



Any accessories or other equipment added to this vehicle, after final date of manufacture, must be weighed or have their weight determined, and the weight deducted from the prescribed cargo weight rating (CWR) of this vehicle. This may decrease the permissible longitudinal zone of the center of gravity for this vehicle.

The longitudinal center of gravity zone has been determined for the full cargo weight rating of this truck. If a slide-in camper has a total weight less than the cargo weight rating (CWR), the permissible longitudinal zone of the center of gravity may be larger. However, individual axle loads should not exceed either of the gross axle weight ratings (GAWR).

Secure loose items in the front and rear seats that could affect the balance of your vehicle. When the truck/camper is loaded, drive to a scale and weigh the front and the rear separately to determine the axle loads. Individual axle loads should not exceed either of the gross axle weight ratings (GAWR). The total of the axle loads should not exceed the gross vehicle weight rating (GVWR). These ratings are given on the vehicle identification plate and on the vehicle certification label which are located on the left side of the vehicle, normally on the door latch post or door edge next to the driver. If weight ratings are exceeded, move or remove items to bring all weights below the ratings.

CAUTION: The longitudinal center of gravity is only one of the many factors which may affect the overall performance of a vehicle, including handling, steering and braking. The cargo load should be distributed on both sides of the centerline as equally as possible. The recommended longitudinal limits for the camper's center of gravity are based on the assumption that the vehicle will be operated under reasonable conditions and within the existing conditions. Failure to do so could result in unsatisfactory vehicle performance and could make the vehicle unsafe to operate.

In this connection, refer to any recommendations by the slide-in camper manufacturer regarding installation and loading of the camper.

TRUCK - CAMPER LOADING

DEFINITION OF TERMS

For the purposes of calculating Truck-Camper Loading in this book, listed below are some common terms and abbreviations:

Cargo Weight Rating (CWR)—means the value specified by the vehicle manufacturer as the cargo-carrying capacity of a vehicle in pounds, exclusive of (minus) the weight of occupants, computed as 150 pounds times the number of designated seating positions.

Center of Gravity (CG)—Point where the mass of a body is concentrated and if suspended at that point would balance front and rear.

Curb Weight—Weight of a vehicle without driver, passengers or cargo but including fuel, coolant and other items of standard equipment.

Dimension A & B—Front and rear limit of Center of Gravity (CG) zone.

Gross Vehicle Weight Rating or 'GVWR' means the value specified by the manufacturer as the loaded weight of a single vehicle.

Gross Axle Weight Rating or 'GAWR' means the value specified by the vehicle manufacturer as the load carrying capacity of a single axle system measured at the tire-ground interfaces.

Model Weight—Weight of the vehicle with all items of standard equipment, 150 pounds per passenger in each designated seating position and maximum capacity of fuel, oil and coolant.

Payload Rating—is the maximum allowable load (including the weight of the driver and all occupants) that the vehicle can carry based on all factory-installed equipment on the vehicle.

RPO—Regular Production Option.

Slide-in Camper—means a camper having a roof, floor, and sides, designed to be mounted on and removable from the cargo area of a truck by the user.

Weight Distribution—The amount of a vehicles weight that rests on each axle.

Wheelbase (WB)—The distance from the center line of the front axle to the center line of the rear axle.

LIMITATIONS

The following General Motors truck models are not recommended for slide-in camper applications:

- Any pickup model with a cargo weight rating (CWR) of less than 500 lbs. A statement to this effect is imprinted on the Truck-Camper Loading information label which states whether that vehicle is recommended for use with a slide-in camper.
- S10-15 2WD Pickup with 4200 lb. GVWR
- T10-15 4x4 Pickup with 4650 lb. GVWR.
- S/T10-15 Pickup with 108.6" WB
- S/T10-15 Extended Cab Pickup

Note: G.M. 1500 F-Series should not be used for larger, cut-over-type slide-in campers.

TRUCK - CAMPER LOADING

S/T PICKUPS, C/K PICKUPS, R/V BONUS AND CREW CAB PICKUPS

INSTRUCTIONS FOR PROSPECTIVE TRUCK PURCHASERS VEHICLE SELECTION AND WEIGHT ANALYSIS

For S/T10/15 Models.

You must order S/T 10803 (117.8" WB) model with one of the following GVWR Ratings:

S10803 (2WD)	4500 lb.	GVWR
S10803 (2WD)	4900 lb.	GVWR
T10803 (4x4)	5150 lb.	GVWR

If you intend to use a slide-in camper on your S/T10/15 Pickup Truck, Record the model on page 3. Record the model GVWR, front GAWR, and rear GAWR on page 7. These ratings can be found in the S/T10/15 version of the General Motors Light-Duty Truck Facts/Data Book on the Specifications pages.

For C/K, R/V Models.

From the model selection pages of the C/K or R/V Pickup section of the General Motors Light-Duty Truck Facts/Data Book, select the pickup truck model you desire. Record this information on page 3. Refer to the Specification pages for the selected model. Select the GVWR you require and note any minimum tire size and chassis equipment requirements for that GVWR. To approximate the GVWR you require, add your loaded camper weight to the vehicle model weight shown on the appropriate weights page of the Facts/Data Book. Record this information and the Gross Axle Weight Rating (GAWR), Front and Rear (from the Specifications pages), on the camper loading worksheet, page 7.

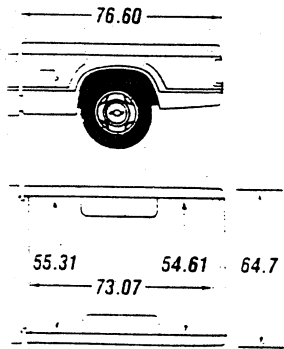
- Record the front and rear model weights of your selected vehicle.
 - List all factory-installed options you desire, including any options required by your selected GVWR, with their front and rear weights on the Pickup camper loading worksheet.
 - Total the front and rear weights of vehicle model and options to arrive at the total front and rear weight of the vehicle.
 - Subtract the adjusted total vehicle weight from the GVWR to arrive at the cargo weight rating (CWR) of your truck. Record this information on page 3.
 - Proceed to page 11 and calculate the center of gravity location limits using front and rear GAWRs, cargo weight rating (CWR), and front and rear weight of truck as determined above. Record this information on page 3.
- * In addition, any dealer-installed or other accessories will reduce the cargo-carrying capacity on the weight of the equipment installed.

TRUCK - CAMPER LOADING DIMENSIONS

S-10/15 PICKUPS

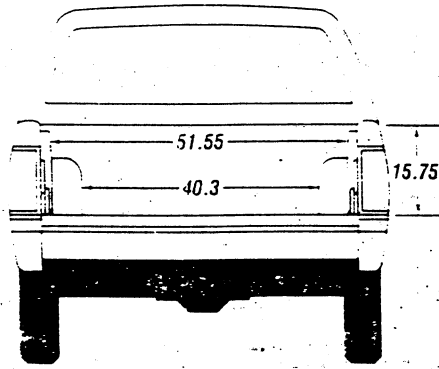
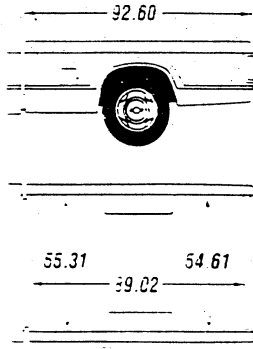
SHORT BOX

MODELS S/T10603, S/T10653)



LONG BOX

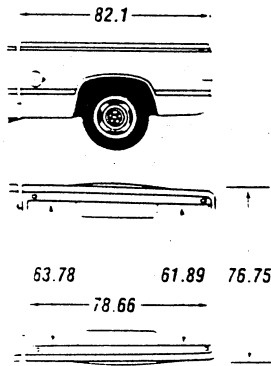
(MODEL S. T10803)



C/K PICKUPS

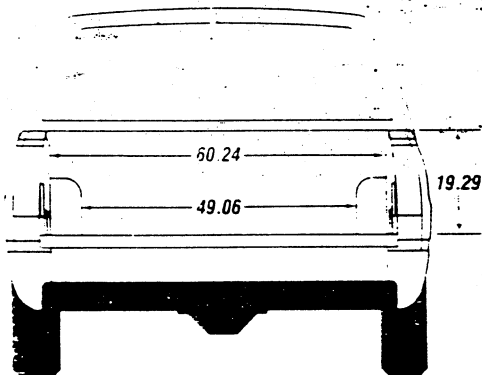
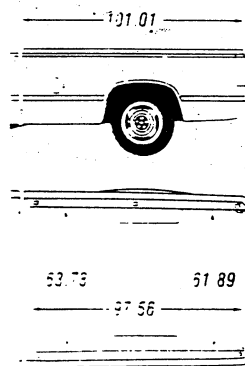
FLEETSIDE/WIDESIDE SHORT BOX

MODELS C/K10703, C/K10753, C/K20753)

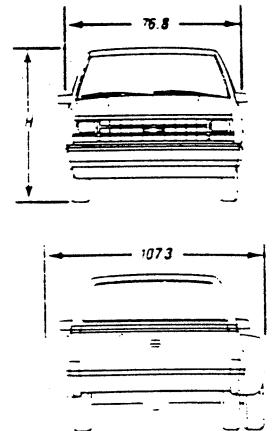
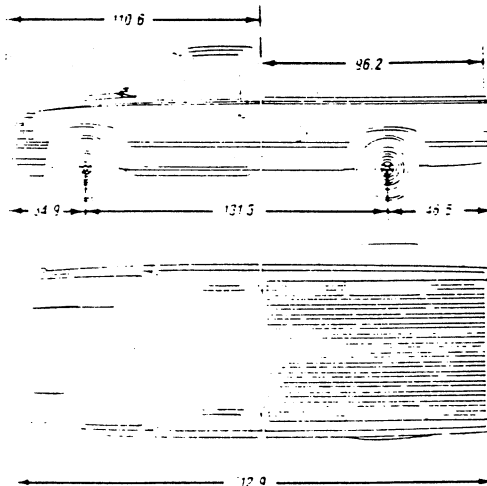
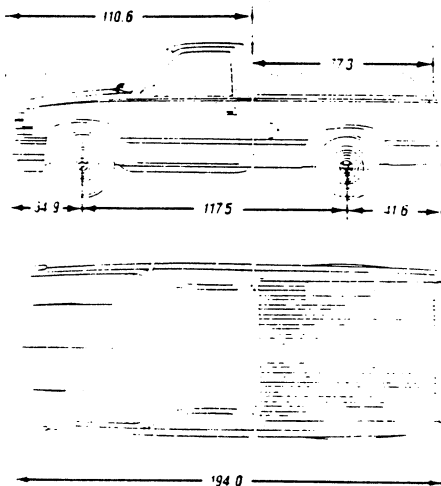


FLEETSIDE/WIDESIDE LONG BOX

MODELS C/K10903, C/K20903, C/K30903,
C/K10953, C/K20953, C/K30953)



C/K REGULAR CAB PICKUP

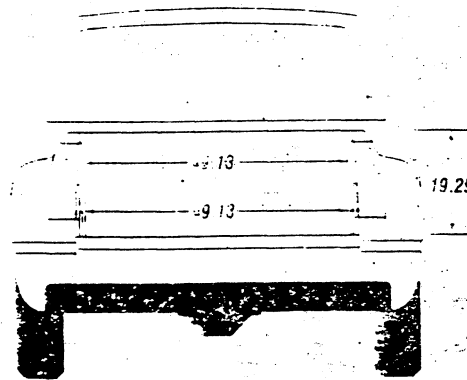
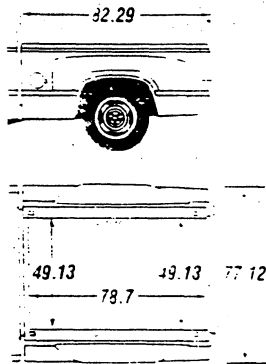


TRUCK-CAMPER LOADING

DIMENSIONS

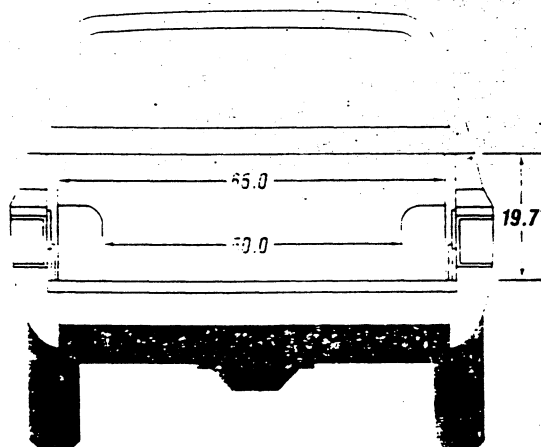
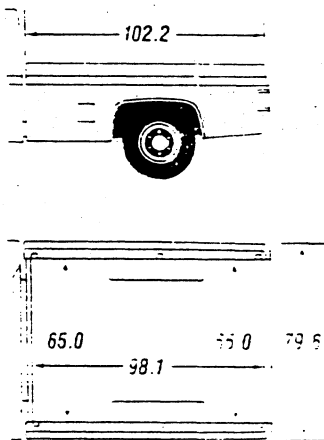
C/K PICKUPS

SPORTSIDE SHORT BOX (MODELS C/K10703)

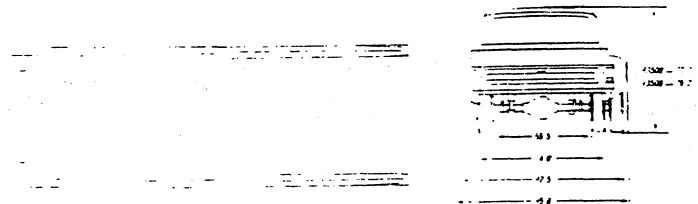
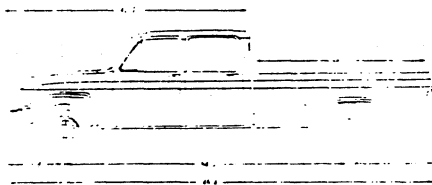


R/V PICKUPS

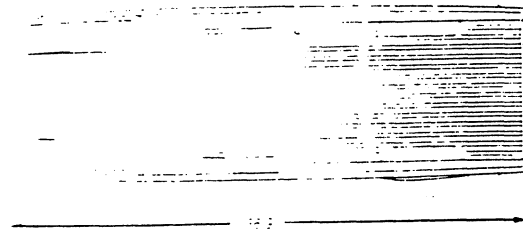
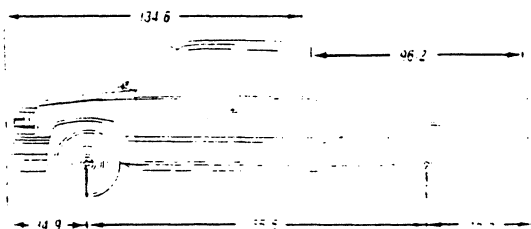
FLEETSIDE/WIDESIDE LONG BOX (MODELS R/V30943)



R/V BONUS/CREW CAB PICKUP



C/K EXTENDED CAB PICKUP

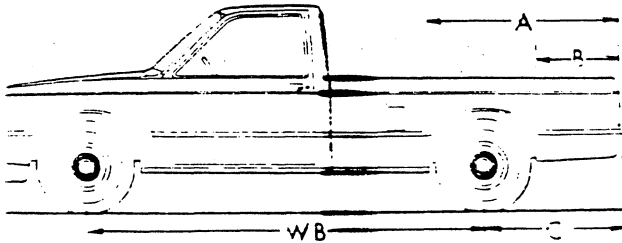


TRUCK - CAMPER LOADING

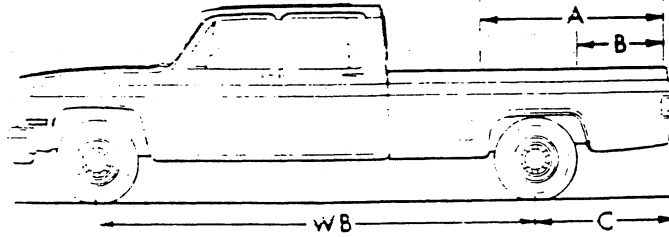
MODEL CODES AND DIMENSIONS

SERIES	MODEL NUMBER	PICKUP BOX LENGTH	PICKUP STYLE	WB	"C"
2-WHEEL-DRIVE REGULAR CAB MODELS					
S-10/15	S10803	7 1/2'	Fleetside/Wideside (E63)	117.9"	42.40"
C1500	C10703	6 1/2'	Fleetside/Wideside (E63) Sportside (E62)	117.5"	38.70"
	C10903	8'	Fleetside/Wideside (E63)	117.5"	38.61"
C2500	C20903	8'	Fleetside/Wideside (E63)	131.5"	43.57"
C3500	C30903	8'	Fleetside/Wideside (E63)	131.5"	43.57"
4-WHEEL-DRIVE REGULAR CAB MODELS					
T10/15	T10803	7 1/2'	Fleetside/Wideside (E63)	117.9"	42.40"
K1500	K10703	6 1/2'	Fleetside/Wideside (E63) Sportside (E62)	117.5"	38.70"
	K10903	8'	Fleetside/Wideside (E63)	117.5"	38.61"
K2500	K20903	8'	Fleetside/Wideside (E63)	131.5"	43.57"
K3500	K30903	8'	Fleetside/Wideside (E63)	131.5"	43.57"
EXTENDED CAB MODELS					
C/K1500	C/K10753	6 1/2'	Fleetside/Wideside (E63)	141.5"	38.70"
	C/K10953	8'	Fleetside/Wideside (E63)	155.5"	43.57"
C/K2500	C/K20753	6 1/2'	Fleetside/Wideside (E63)	141.5"	38.70"
	C/K20953	8'	Fleetside/Wideside (E63)	155.5"	43.57"
C/K3500	C/K30953	8'	Fleetside/Wideside (E63)	155.5"	43.57"
BONUS CAB MODEL					
V3500	R/V30943	8'	Fleetside/Wideside (E63 & YG4)	164.5"	44.22"
CREW CAB MODEL					
F/V3500	F/V30943	8'	Fleetside/Wideside (E63 & AS3)	164.5"	44.22"

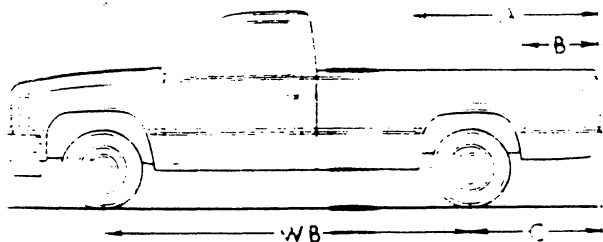
S-10/15 PICKUP



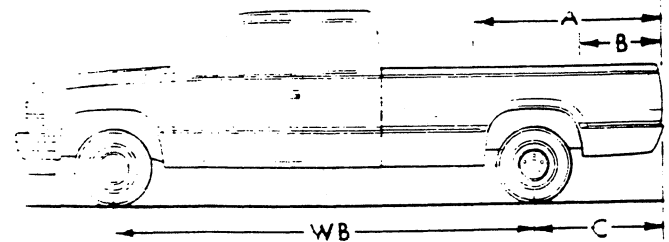
R/V PICKUP



C/K PICKUP



C/K PICKUP



TRUCK - CAMPER LOADING

CALCULATIONS TO DETERMINE FORWARD (A) AND REARWARD (B) LOCATION OF CENTER OF GRAVITY FOR CARGO WEIGHT RATING

Calculations for Dimension A

$$A = \left[\frac{\text{Front GAWR} - 1.05 \times \text{Front Weight of Truck}}{\text{Cargo Weight Rating}} \right] \times \text{W.B.} + C$$

Enter Front GAWR _____

Subtract Front Weight of Truck x 1.05 _____

Answer _____

Divide Answer by Cargo Weight Rating (CWR) _____

Answer _____

Multiply Answer by Wheelbase _____

(See Chart on Page 10)

Answer _____

Add C Dimension to Answer _____

(See Chart on Page 10)

Dimension A = _____

Note: If "A" is greater than pickup box length, use box length for "A" dimension.

Calculations for Dimension B

$$B = \left[1 - \frac{\text{Rear GAWR} - 1.1 \times \text{Rear Weight of Truck}}{\text{Cargo Weight Rating}} \right] \times \text{W.B.} + C$$

Enter Rear GAWR _____

Subtract Rear Weight of Truck x 1.1 _____

Answer _____

Divide Answer by Cargo Weight Rating (CWR) _____

Answer _____

Subtract Answer from 1.000 _____

Multiply Answer by Wheelbase _____

Answer _____

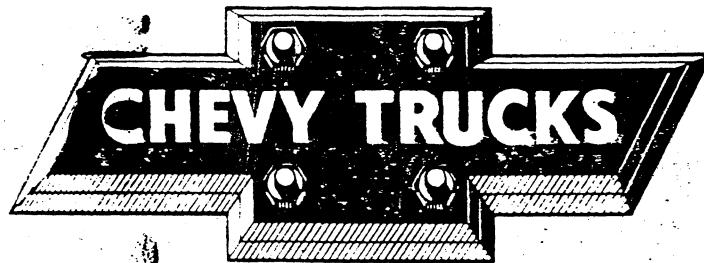
Add C Dimension to Answer _____

Dimension B = _____

Note: If "B" dimension is negative, use 0 (zero) for "B" dimension.

If "B" dimension is greater than "A" dimension, camper usage is not recommended at the Calculated Cargo Weight Rating. Camper usage may be possible for a lighter camper. Substitute known specific camper weight (less than Cargo Weight Rating) for Cargo Weight Rating in calculations above to determine "A" to "B" range for that specific camper.

Record dimension A and B on page 3.



CHEVROLET MOTOR DIVISION
GENERAL MOTORS CORPORATION
WARREN, MICHIGAN 48090



GMC TRUCK DIVISION
31 JUDSON STREET
PONTIAC, MICHIGAN 48058