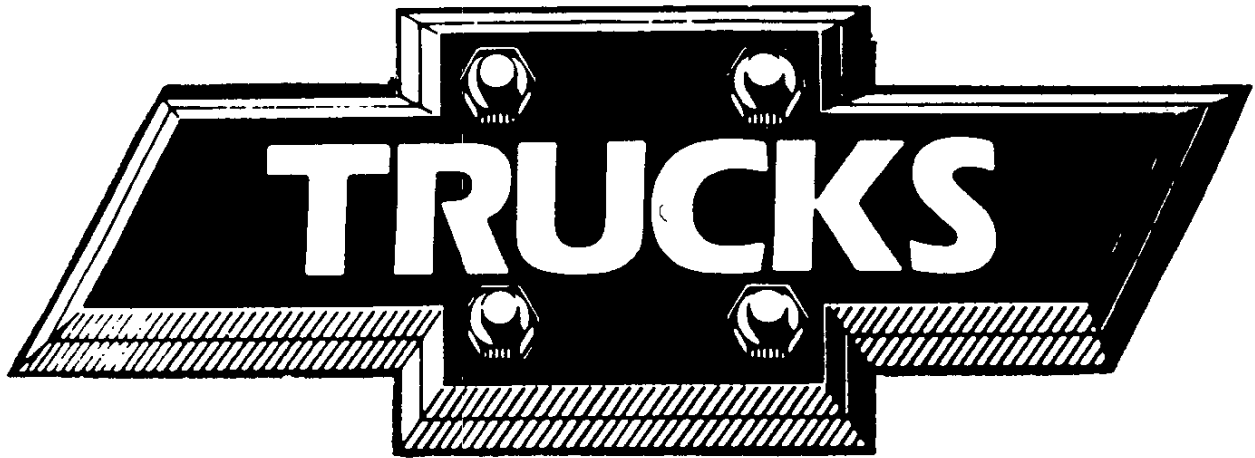


CHEVROLET



1995



•

•

•



C/K PICKUP INTRODUCTION

C/K PICKUP

The 1995 C/K Pickups are available in two trim levels: the "Cheyenne" (standard) and the "Silverado" (up-level).

Changes on the C/K Pickup for 1995 include:

- 4.3L V6 Engine enhancements
- 5.0L V8 Engine enhancements
- 5.7L V8 Engine enhancements
- 7.4L V8 Engine enhancements
- New exterior colors
- New interior colors
- Standard air conditioning with Silverado trim
- Smoother shifting 4L80-E Automatic Transmission
- Standard 4-wheel Anti-Lock Braking System
- Standard P235/75R15 All Season Tires (on 2-wheel drive models)
- Standard Driver's Side Air Bag under 8600 lb GVW
- Standard Electric Below-Eye-Line outside rearview mirrors with uplevel decor
- Standard 7-Lead Wiring Harness for trailering
- Standard Driver's Convenience Group: Speed Control and Tilt Steering, and Power Windows and Door Locks with uplevel decor
- Optional Remote Keyless Entry feature
- Redesigned center console with Reclining High Back Bucket Seats
- New right hand Assist Handle . Left hand/right hand Assist Handles with Crew Cab Models
- Optional leather seats available with Extended Cab Models.
- Standard ETR AM/FM Stereo Radio with Seek-Scan with Digital Clock
- Optional ETR AM/FM Stereo Radio with seek-scan with auto tone control, digital clock, cassette deck, theft lock and speed-compensated volume
- Optional ETR AM/FM Stereo Radio with seek-scan with automatic tone control, digital clock, cassette deck and/or compact disc with theft lock and speed-compensated volume
- New Instrument Panel design, includes two cupholders located in dash and standard tachometer
- New backlit power window and door lock switches
- Seat improvements: Seat design includes new contours and vinyl fabrics and all outboard seats have adjustable head restraints on front and rear seats. Up-level decor includes front power lumbar seats, wide-centered armrests and storage nets located on back of front seats.
- Standard Brake/Transmission Shift Interlock
- 2-Sided Key for simplified entry
- Standard heavy duty radiator
- Standard rear quarter swingout windows with Extended Cab Models only

MODEL SELECTION SUMMARY

Use the chart below to choose the model that fits your customer's needs. Note that the Maximum Payload is based on curb weight. Also, the Maximum Gross Trailer Weight is based on vehicles that are properly equipped. See your 1995 Chevrolet Truck Order Guide for details.

SERIES	MODEL NUMBER/ BODY CODE/ OPTION CODE	PASSENGER CAPACITY (STD./OPT.)	STANDARD ENGINE/ TRANS.	OPTIONAL ENGINE/ TRANS.	GVWR (LB)	GAWR (LB) FRONT/ REAR	MAXIMUM PAYLOAD (LB) BASED ON CURB WT.	MAX. GROSS TRAILER WT./ TONGUE LOAD (LB) PROPERLY EQUIPPED	MAX. GROSS TRAILER WT. KINGPIN LOAD (LB) PROPERLY EQUIPPED
TWO-WHEEL DRIVE MODELS									
C1500 REGULAR CAB									
SPORTSIDE SHORT BOX	CC10703/E62	3/2	4.3L V6/M5	4.3L V6/A4 5.0L V8/M5/A4 5.7L V8/M5/A4	6100	3600/3750	—	5000/600 6000/750 7500/900	—
FLEETSIDE SHORT BOX WT 1500	CC10703/E63/ X81	3/-	4.3L V6/M5	4.3L V6/A4	6100	3600/3750	—	5000/600	—
FLEETSIDE SHORT BOX	CC10703/E63	3/2	4.3L V6/M5	4.3L V6/A4 5.0L V8/M5/A4 5.7L V8/M5/A4	6100	3600/3750	—	5000/600 6000/750 7500/900	—
FLEETSIDE LONG BOX WT1500	CC10903/E63/ X81	3/-	4.3L V6/M5	4.3L V6/A4	6100	3600/3750	—	5000/600	—
FLEETSIDE LONG BOX	CC10903/E63	3/2	4.3L V6/M5	4.3L V6/A4 5.0L V8/M5/A4 5.7L V8/M5/A4 6.5L V8/M5/A4 6.5L V8 ¹ /A4	6100	3600/3750	—	5000/600 6000/750 7500/900 1000/750 7000/850	—
C1500 EXTENDED CAB									
SPORTSIDE SHORT BOX	CC10753/E62	6/5/3	4.3L V6/M5	4.3L V6/A4 5.0L V8/M5/A4 5.7L V8/M5/A4 6.5L V8/M5/A4 6.5L V8 ¹ /A4	6200	3500/3686	—	5000/600 6000/750 7500/900 1000/750 7000/850	—
FLEETSIDE SHORT BOX	CC10753/E63	6/5/3	4.3L V6/M5	4.3L V6/A4 5.0L V8/M5/A4 5.7L V8/M5/A4 6.5L V8/M5/A4 6.5L V8 ¹ /A4	6200	3500/3686	—	5000/600 6000/750 7500/900 1000/750 7000/850	—
FLEETSIDE LONG BOX	CC10953/E63	6/5/3	5.0L V8/M5	5.0L V8/A4 5.7L V8/M5/A4 6.5L V8/M5/A4 6.5L V8 ¹ /A4	6200	3500/3686	—	6000/750 7500/900 1000/750 7000/850	—
C2500 REGULAR CAB									
FLEETSIDE LONG BOX	CC20903/E63	3/2	4.3L V6/M5	4.3L V6/A4 5.0L V8/M5/A4 5.7L V8/M5/A4 6.5L V8/M5/A4 6.5L V8 ¹ /A4	7200	3150/4670	—	1000/600 200/600 100/350 100/300 7500/900	— 3500/1300 1000/1700 1500/1500 7500/1800
FLEETSIDE LONG BOX HD	CC20903/E63/ C6P/ YHH or YGK	3/2	5.7L V8/M5	5.7L V8/A4 7.4L V8/M5/A4 6.5L V8 ¹ /M5/A4	8600	3600/6000	—	100/350 10000/1000 100/1000	1000/6000 10000/5700 1000/1000

¹ Turbo Diesel.

See the following pages for additional 2- and 4- Wheel Drive Models.

C/K PICKUP

SERIES	MODEL NUMBER/ BODY CODE/ OPTION CODE	PASSENGER CAPACITY (STD./OPT.)	STANDARD ENGINE/ TRANS.	OPTIONAL ENGINE/ TRANS.	GVWR (LB)	GAWR (LB) FRONT/ REAR	MAXIMUM PAYLOAD (LB) BASED ON CURB WT.	MAX. GROSS TRAILER WT./ TONGUE LOAD (LB) PROPERLY EQUIPPED	MAX. GROSS TRAILER WT./ KINGPIN LOAD (LB) PROPERLY EQUIPPED
TWO-WHEEL DRIVE MODELS (CONT.)									
C2500 EXTENDED CAB									
FLEETSIDE SHORT BOX	CC20753/E63	6/5/3	5.0L V8/M5	5.0L V8/A4 5.7L V8/M5/A4 6.5L V8/M5/A4 6.5L V8 ¹ /A4	7200	3600/4670		6500/800 1000/950 1500/800 7500/900	6500/1600 7500/1700 1500/1800 7500/1800
FLEETSIDE LONG BOX HD	CC20953/E63/ C6P/ YHH or YGK	6/5/3	5.7L V8/M5	5.7L V8/A4 7.4L V8/M5/A4 6.5L V8 ¹ /M5/A4	8600	3600/6000		1000/950 10000/1000 8500/1000	8000/2000 11000/2700 1800/2100
C3500 REGULAR CAB									
FLEETSIDE LONG BOX	CC30903/E63 YGK or YHH	3/2	5.7L V8/M5	5.7L V8/A4 7.4L V8/M5/A4 6.5L V8 ¹ /M5/A4	9000	3600/6084		9500/1000 10000/1000 8500/1000	9500/2300 1100/2100 8500/2100
FLEETSIDE LONG BOX DUAL REAR WHEELS	CC30903/E63/ R05	3/2	5.7L V8/M5	5.7L V8/A4 7.4L V8/M5/A4 6.5L V8 ¹ /M5/A4	10000	3600/7500		9500/1000 10000/1000 8500/1000	9500/2300 1100/2300 1800/2100
C3500 EXTENDED CAB									
FLEETSIDE LONG BOX DUAL REAR WHEELS	CC30953/E63/ R05	6/5/3	5.7L V8/M5	5.7L V8/A4 7.4L V8/M5/A4 6.5L V8 ¹ /M5/A4	10000	3600/7500		9500/1000 10000/1000 8500/1000	9500/2300 11000/3200 1500/2100
C3500 CREW CAB									
SINGLE REAR WHEELS	CC30943/E63	6/5	5.7L V8/M5	5.7L V8/A4 7.4L V8/M5/A4 6.5L V8 ¹ /M5/A4	9000	4100/6084	35	7500/900 10000/1000 1000/950	7500/1800 10000/2600 8000/2000
DUAL REAR WHEELS	CC30943/E63/ R05	6/5	5.7L V8/M5	5.7L V8/A4 7.4L V8/M5/A4 6.5L V8 ¹ /M5/A4	10000	4100/7500		9000/1000 10000/1000 1000/950	9000/2200 10000/2100 8000/2000

¹ Turbo Diesel.
See the following pages for 4-Wheel Drive Models.

C/K PICKUP

SERIES	MODEL NUMBER/ BODY CODE/ OPTION CODE	PASSENGER CAPACITY (STD./OPT.)	STANDARD ENGINE/ TRANS.	OPTIONAL ENGINE/ TRANS.	GVWR (LB)	GAWR (LB) FRONT/ REAR	MAXIMUM PAYLOAD (LB) BASED ON CURB WT.	MAX. GROSS TRAILER WT./ TONGUE LOAD (LB) PROPERLY EQUIPPED	MAX. GROSS TRAILER WT./ KINGPIN LOAD (LB) PROPERLY EQUIPPED
FOUR-WHEEL DRIVE MODELS									
K1500 REGULAR CAB									
SPORTSIDE SHORT BOX	CK10703/E62	3/2	4.3L V6/M5	4.3L V6/A4 5.0L V8/M5/A4 5.7L V8/M5/A4	6100	3600/3750	1070	5000/600 6500/800 7000/850	— — —
FLEETSIDE SHORT BOX WT 1500	CK10703/E63/ X81	3/-	4.3L V6/M5	4.3L V6/A4	6100	3600/3750	1070	5000/600	—
FLEETSIDE SHORT BOX	CK10703/E63	3/2	4.3L V6/M5	4.3L V6/A4 5.0L V8/M5/A4 5.7L V8/M5/A4	6100	3600/3750	1070	5000/600 6500/800 7000/850	— — —
FLEETSIDE LONG BOX WT1500	CK10903/E63/ X81	3/-	4.3L V6/M5	4.3L V6/A4	6100	3600/3750	1070	5000/600	—
FLEETSIDE LONG BOX	CK10903/E63	3/2	4.3L V6/M5	4.3L V6/A4 5.0L V8/M5/A4 5.7L V8/M5/A4 6.5L V8/M5/A4 6.5L V8/A4	6100	3600/3750	1070	5000/600 6500/800 7000/850 6500/800 7000/850	— — — — —
K1500 EXTENDED CAB									
SPORTSIDE SHORT BOX	CK10753/E62	3/5/3	4.3L V6/M5	4.3L V6/A4 5.0L V8/M5/A4 5.7L V8/M5/A4	6200	3600/3750	1035	5000/600 6500/800 7000/850	— — —
SPORTSIDE SHORT BOX	CK10753/E62	6/5/3	4.3L V6/M5	4.3L V6/A4 5.0L V8/M5/A4 5.7L V8/M5/A4 6.5L V8/M5/A4 6.5L V8/A4 ¹	6600	3600/3750	1070	5000/600 6500/800 7000/850 6500/800 7000/850	— — — — —
FLEETSIDE SHORT BOX	CK10753/E63	4/3	4.3L V6/M5	4.3L V6/A4 5.0L V8/M5/A4 5.7L V8/M5/A4	6200	3600/3750	1035	5000/600 6500/800 7000/850	— — —
FLEETSIDE SHORT BOX	CK10753/E63	6/5/3	4.3L V6/M5	4.3L V6/A4 5.0L V8/M5/A4 5.7L V8/M5/A4 6.5L V8/M5/A4 6.5L V8/A4 ¹	6600	3600/3750	1070	5000/600 6500/800 7000/850 6500/800 7000/850	— — — — —
FLEETSIDE LONG BOX	CK10953/E63	3/3/3	5.0L V8/M5	5.0L V8/A4 5.7L V8/M5/A4	6200	3600/3750	970	6500/800 7000/850	—
FLEETSIDE LONG BOX	CK10953/E63	6/5/3	5.0L V8/M5	5.0L V8/A4 5.7L V8/M5/A4 6.5L V8/M5/A4 6.5L V8/A4	6600 6800	3600/3750	992 1030	6500/800 7000/850 6500/800 7000/850	— — — —

¹ Turbo Diesel.
A=100=1.50#

C/K PICKUP

SERIES	MODEL NUMBER/ BODY CODE/ OPTION CODE	PASSENGER CAPACITY (STD./OPT.)	STANDARD ENGINE/ TRANS.	OPTIONAL ENGINE/ TRANS.	GVWR (LB)	GAWR (LB) FRONT/ REAR	MAXIMUM PAYLOAD (LB) BASED ON CURB WT.	MAX. GROSS TRAILER WT./ TONGUE LOAD (LB) PROPERLY EQUIPPED	MAX. GROSS TRAILER WT./ KINGPIN LOAD (LB) PROPERLY EQUIPPED
FOUR-WHEEL DRIVE MODELS (CONT.)									
K2500 REGULAR CAB									
FLEETSIDE LONG BOX	CK20903/E63	3/2	4.3L V6/M5	4.3L V6/A4	7200	3750/4670 ²	1150	4500/450	—
				5.0L V8/M5/A4				6000/750	6000/1500
FLEETSIDE LONG BOX HD	CK20903/E63/ C6P YHH or YGK	3/2	5.7L V8/M5	5.7L V8/A4	8600	3750/6000	138	7500/1100	7500/1800
				7.4L V8/M5/A4				10000/1000	10000/2600
				6.5L V8/M5/A4				7000/850	7000/1700
				6.5L V8/A4					
K2500 EXTENDED CAB									
FLEETSIDE SHORT BOX	CK20753/E63	6/5/3	5.0L V8/M5	5.0L V8/A4	7200	3750/4410	103	6000/750	1000/1600
				5.7L V8/M5/A4				1500/800	1500/1600
FLEETSIDE LONG BOX HD	CK20953/E63/ C6P YGK or YHH	6/5/3	5.7L V8/M5	5.7L V8/A4	8600	3750/6000	157	7500/1100	7500/1800
				7.4L V8/M5/A4				10000/1000	10000/2600
				6.5L V8/M5/A4				7000/850	7000/1700
				6.5L V8/A4					
K3500 REGULAR CAB									
FLEETSIDE LONG BOX	CK30903/E63 YGK or YHH	3/2	5.7L V8/M5	5.7L V8/A4	9200	3750/6084	150	7500/900	7500/1800
				7.4L V8/M5/A4				10000/1000	10000/3100
FLEETSIDE LONG BOX DUAL REAR WHEELS	CK30903/E63/ R05	3/2	5.7L V8/M5	5.7L V8/A4	10000	3750/7500	2035	7500/900	7500/1800
				7.4L V8/M5/A4				10000/1000	10000/3100
				6.5L V8/M5/A4				8000/950	8000/2000
K3500 EXTENDED CAB									
FLEETSIDE LONG BOX DUAL REAR WHEELS	CK30953/E63/ R05	6/5/3	5.7L V8/M5	5.7L V8/A4	10000	3750/7500	34	7500/900	7500/1800
				7.4L V8/M5/A4				10000/1000	10000/3100
				6.5L V8/M5/A4				8000/950	8000/2000
K3500 CREW CAB									
SINGLE REAR WHEELS	CK30943/E63	6/5	5.7L V8/M5	5.7L V8/A4	9200	4500/6084	1074	8500/1000	8500/2100
				7.4L V8/M5/A4				10000/1000	12500/3100
DUAL REAR WHEELS	CK30943/E63/ R05	6/5	5.7L V8/M5	5.7L V8/A4	10000	4500/7500	1197	8500/1000	8500/2100
				7.4L V8/M5/A4				10000/1000	12500/3100
				6.5L V8/M5/A4				8000/950	8000/2000

¹ Turbo Diesel.

² Requires 4.3L, 5.0L or 5.7L engines.

³ Requires XHH or XGK tires.

POWERTRAINS

Chevrolet offers a variety of engines, transmissions and rear axle ratios for the C/K Pickups. The following charts detail basic engine, transmission and axle specifications. See your 1995 Chevrolet Truck Order Guide for details.

ENGINES								
ENGINE	4.3L V6	5.0L V8	5.7L V8	5.7L V8 HD	7.4L V8 HD	6.5L V8 DIESEL	6.5L V8 TURBO DIESEL	6.5L V8 TURBO DIESEL
Order Code Restrictions	LB4 8500 GVW or Under	L03 Up To 7200 GVW	L05 8500 GVW or Under	L05 Above 8500 GVW	L19 Above 8500 GVW	L49 8500 GVW or Under	L56 8500 GVW or Under	L65 Above 8500 GVW
SAE Net Horsepower @ RPM	160@ 4000	175@	4000	4000	230@ 3600	155@ 3600	180@ 3400	190@ 3400
SAE Net Torque lb ft @ RPM	235@ 2400			2400	385@ 1600	275@ 1700	360@ 1700	385@ 1700
Fuel System	EFI	EFI	EFI	EFI	EFI	IFI	TIDI	TIDI
Clutch Size (in.)	11	12	12	12	12	12	12	12
Standard Battery Cold Cranking Amps @ 0°F	600	600	600	600	600	2 @ 600 each	2 @ 600 each	2 @ 600 each
Standard Alternator Maximum Capacity (Amps)	100	100	100	100	100	100	100	100

TRANSMISSIONS				
	MANUAL		AUTOMATIC	
	MANUAL 5-SPEED W/OVERDRIVE	MANUAL 5-SPEED W/OVERDRIVE AND DEEP LOW HEAVY-DUTY	ELECTRONICALLY CONTROLLED AUTOMATIC 4-SPEED OVERDRIVE W/TORQUE CONVERTER CLUTCH (4L60-E)	ELECTRONICALLY CONTROLLED AUTOMATIC 4-SPEED OVERDRIVE W/TORQUE CONVERTER CLUTCH HEAVY-DUTY (4L80-E)
Transmission Order Code	MG5	MW3	M30	MT1
Application	8500 GVW or Under	See Order Guide	8500 GVW or Under	Above 8500 GVW and Turbo Diesel
Synchronized Speeds	1/2/3/4/5	1/2/3/4/5	—	—
Gear Ratios				
First	4.02	5.61	3.06	2.48
Second	2.32	3.04	1.63	1.48
Third	1.40	1.67	1.00	1.00
Fourth	1.00	1.00	0.70	0.75
Fifth	0.73	0.75	—	—
Reverse	3.55	5.61	2.29	2.08
Power Take-Off	No	Yes	No	No

REAR AXLES																	
Availability	(See Order Guide)			(See Order Guide)			(See Order Guide)			(See Order Guide)			(See Order Guide)				
Make	GM			GM			GM			GM			GM				
Capacity (lb)	3750 Semi-Floating			4800 Semi-Floating			6000 Full-Floating			6000-6084 Full-Floating			7500 Full-Floating				
Pinion and Ring Gear Type	Hypoid			Hypoid			Hypoid			Hypoid			Hypoid				
Axle Ratio Code	GU4	GU6	GT4	GU6	GT4	GT5	GU6	GT-	GT5	HC4	GU6	GT4	GT5	HC4	GT4	GT5	HC4
Ratio	3.08	3.42	3.73	3.42	3.73	4.10	3.42	3.73	4.10	4.56	3.42	3.73	4.10	4.56	3.73	4.10	4.56
Pinion Teeth	13	12	11	12	11	10	12	11	10	9	12	11	10	9	11	10	9
Ring Gear Teeth	41	41	41	41	41	41	41	41	41	41	41	41	41	41	41	41	41
Ring Gear Diameter (in.)	8.5	8.5	8.5	9.5	9.5	9.5	9.5	9.5	9.5	9.5	10.5	10.5	10.5	10.5	10.5	10.5	10.5

Note: Axle Ratio availability depends on model, powertrain and emissions selected. See your 1995 Chevrolet Truck Order Guide for specific details.

C/K PICKUP

FRONT AXLES										
Availability	K1500 & K2500 w/7200 GVWR			K2500 w/C6P & K3500				K30943		
Make/Capacity (lb)	GM/3925			GM/4250				GM/4500		
Pinion and Ring Gear Type	Hypoid			Hypoid				Hypoid		
Ratio	3.42	3.73	4.10	3.42	3.73	4.10	4.56	3.73	4.10	4.56
Pinion Teeth	12	11	10	12	11	10	9	11	10	9
Ring Gear Teeth	41	41	41	41	41	41	41	41	41	41
Ring Gear Diameter (in.)	8.25	8.25	8.25	9.25	9.25	9.25	9.25	9.75	9.75	9.75
Differential Type	2-Pinion Tapered Roller			2-Pinion Tapered Roller				2-Pinion Tapered Roller		
Bearings, Type										
Lubricant Capacity (pints)	4.5			6				6		

Note: Axle Ratio availability depends on model, powertrain and emissions selected. See your 1995 Chevrolet Truck Order Guide for specific details.

TRIM LEVELS

Chevrolet offers C/K Pickups in two primary trim levels — "Cheyenne" and "Silverado." The following chart details major standard features. See your 1995 Chevrolet Truck Order Guide for more details, including information on the WT 1500 and Sport Pickup.

CHASSIS EQUIPMENT			
KEY: ■ = STANDARD, — = NOT INCLUDED		CHEYENNE (STANDARD)	SILVERADO (YES)
BRAKES	Power-assisted, front disc, rear drum; self-adjusting. Four wheel anti-lock system. Includes brake/transmission interlock.	■	■
EXHAUST	Single.	■	■
FRAME	All-welded ladder-type, channel design and boxed front-end section. Section modulus (cu in.): Reg. Cabs — 2.66 on C/K 1500 and C/K 2500 (2WD), 3.27 on C/K 1500 and C/K 2500 (4WD), 5.26 on C/K 2500 /C6P and C/K3500 (2WD), 5.25 on C/K2500 w/C6P and C/K3500 (4WD). Ext. Cabs — 3.37 on C/K1500 and C/K2500 (2WD), 4.06 on C/K 1500 and C/K2500 (4WD), 6.06 on C/K 2500 w/C6P and C/K3500, Crew Cab — 7.49 on all models.	■	■
FUEL TANK	25.0 gallon (approx.) capacity on C/K 10703/53 and C/K 20753 models. 34.0 gallon (approx.) capacity on all other models.	■	■
REAR AXLE	Hypoid semi-floating on C/K 1500 and 2500. Full-floating on C/K 2500/C6P w/L19 or L65 and C/K3500.	■	■
SHOCK ABSORBERS	25 mm: C/K 1500 front and rear; 32 mm: Front on C/K2500 at 7200 lb GVWR and C/K3500. Rear on C/K2500 and 3500; 32 mm: Front on C/K2500 at 8600 lb GVWR and Crew Cab.	■	■
STABILIZER BAR	4x2: Front 1.25 inch; 4x4: Front 1.18 inch.	■	■
STEERING	Integral power.	■	■
SUSPENSION, FRONT	4x2: Independent with computer-selected coil springs. 4x4: Independent with computer-selected torsion springs.	■	■
SUSPENSION, REAR	C/K1500 and 2500: Semi-elliptic two-stage multi-leaf springs. C/K3500: Semi-elliptic two-stage multi-leaf springs main/auxiliary.	■	■
TOW HOOKS	Two front on 4x4s.	■	■

EXTERIOR EQUIPMENT			
AIR DAM	Black (not included on models at or above 8600 lb GVW).	■	■
BUMPER, FRONT	Bright appearance (w/black rub strip on Crew Cab). Bright appearance, includes black rub strip with bright trim and bright rear appearance with step.	■	—
GLASS	Solar-Ray™ tinted glass.	■	■
GRILLE	Molded plastic painted medium argent with medium argent air intake areas. Deluxe front appearance package with bright grille and bright trim with medium argent intake areas.	■	—
HEADLAMPS	Single rectangular halogen. Dual composite halogen.	■	—
HORN	Single electric low-note. Dual low- and high-note.	■	—

C/K PICKUP

EXTERIOR EQUIPMENT (CONT.)		CHEYENNE (STANDARD)	SILVERADO (YE9)
KEY: ■ = STANDARD, — = NOT INCLUDED			
INSULATION	Flood and cab-to-fender.	—	■
LAMPS	Center high-mounted stop lamp/cargo lamp. Underhood, rear-ward, and side.	■	■
MIRRORS	RH and LH below-eye-line type, painted black. Head size is 8.5" x 5.0". RH and LH electric below-eye-line, outside rearview type painted black. Head size is 8.5" x 5.0".	■	—
MOLDINGS	Black body-side with bright trim and bright wheel opening (E63 only). (N/A K2500 C6P, K3500 and Sportside). Crew Cab: Bright trim with wheel opening molding (R04).	—	■
SPARE TIRE AND WHEEL	Full-size.	■	■
SPARE TIRE CARRIER	Winch-type carrier mounted under frame at rear.	■	■
TIRES	Steel Belted Radials. C/K1500 Reg. Cab (2WD) P235 75R15. Ext. Cab (2WD) P235 75R15. Reg. Cab (4WD) LT225/75R16C. Ext. Cab (4WD) LT245 75R16C. C/K2500 Reg. Cab (2WD)/(4WD) and Ext. Cab (2WD) LT225/75R16D. Ext. Cab (4WD) LT245 75R16C. All models with C6P LT245/75R16E. C/K3500 Reg. Cab, Ext. Cab and Crew Cab w/R04 LT245/75R16E. Reg. Cab and Ext. Cab (2WD) w/R05 LT225/75R16C/D. Reg. Cab, Ext. Cab (4WD) and Crew Cab R05 LT245/75R16D.	■	■
WHEELS	Silver painted steel wheels with black hub ornament. (Argent painted on Crew Cab) 15.0" x 6.0": C/K 1500 (2WD). 16.0" x 6.5": C/K 1500 (4WD), C/K 2500, C/K 3500 w/R04. C/K 3500 w/R05 (front only). 16.0" x 6.0": C/K 3500 w/R05 (rear only). Rally wheel trim. Crew Cab: Rally trim.	■	—
WINDOWS	Rear quarter swing out on extended cab models only.	■	■
WIRING	Seven-lead wiring harness for training purposes.	■	■

INTERIOR EQUIPMENT		CHEYENNE (STANDARD)	SILVERADO (YE9)
AIRBAG	Driver's side (not included on models at or above 8600 lb GVWR).	■	■
AIR CONDITIONING	Front.	—	■
ARMRESTS	RH and LH padded integral with door panels.	■	■
CAB BACK PANELS	Color-keyed carpet.	—	■
CIGARETTE LIGHTER	Located on instrument panel. Includes ashtray light and 2 auxiliary power outlets.	■	■
CUPHOLDER	Two located in the dash.	■	■
DOME LAMP	Switch in LH and RH door jamb (two dome lamps with front door actuated switches on Crew Cab). Switches in all four doors on Crew Cab models.	■	■
DOOR TRIM	Vinyl color-keyed door trim panels with padded insert armrest, large easily accessible door handles, and door reflectors. Color-keyed soft vinyl with cloth insert, map pockets with carpet trim, large easily accessible door handles and door reflectors with light. NOTE: Scotchgard™ protection on all cloth panel and trim.	■	—
DOOR PILLAR AND ROOF SIDE PANELS	Color-keyed.	■	■
DOOR SILL PLATE	Color-keyed.	■	■
DOORS	Side door guard beams.	■	■
DRIVER'S CONVENIENCE GROUP	Speed Control and Tilt Steering Wheel. Power windows and door locks.	—	■
FLOOR COVERING	Embossed color-keyed rubber mat (03, 53 models). Embossed black rubber mat (Crew Cab only). Color-keyed carpeting and removable color-keyed rubber floor mats. NOTE: Scotchgard™ protection on all cloth floor coverings.	■	—

C/K PICKUP

INTERIOR EQUIPMENT (CONT.)			
KEY: ■ = STANDARD, — = NOT INCLUDED		CHEYENNE (STANDARD)	SILVERADO (YE9)
GAGES	Including fuel level, odometer, oil pressure, trip odometer, speedometer, telltale lights, engine temperature, voltmeter and tachometer.	■	■
GLOVE BOX	Latched door —	■	■
HEADLAMP WARNING BUZZER	Headlamps on.	■	■
HEADLINER	Full-length color-keyed cloth with matching retainer moldings. Crew Cab: Full-length color-keyed cloth with matching retainer moldings, and three assist handles (RF, LR, RR).	■ ■	■ ■
HEATER	Deluxe with windshield and side window defoggers.	■	■
INSULATION	Provided on dash panels, cowl tops and sides, and doors. Extended Cabs have additional insulation on the rear quarter and back panels and on floor coverings. Extra insulation is provided with diesel engines. Plus insulation on headliners. Plus insulation on Regular Cab back panels.	■ — —	■ ■ ■
MIRRORS	10-inch rearview.	■	■
RADIOS	ETR AM/FM stereo radio with seek-scan and digital clock. Includes two 6" diameter front door mounted speakers and two 4" x 6" rear mounted speakers located at rear above door (4 speakers in all). ETR AM/FM stereo radio with seek-scan, digital clock, and cassette deck. Includes two 6" diameter front door mounted speakers, and two 4" x 6" rear mounted speakers located at rear above door (4 speakers in all).	■ —	— ■
SEATS	Regular Cab: Front 3-passenger bench with head restraints and folding backrest. Front 3-passenger bench with head restraints and folding center armrest. Power lumbar with front seats only and front seat back storage nets included. Extended Cab: Front reclining 3-passenger 60/40 split bench with head restraints and folding rear bench seat. Front reclining 3-passenger 60/40 split bench with head restraints and folding rear bench seat includes center armrest. Power lumbar with front seats only and front seat back storage nets included. Crew Cab: Front 3-passenger bench with head restraints and folding backrest and rear 3-passenger bench with adjustable backrest (YE9 includes center armrest, dual power lumbar and front seat back storage nets). NOTE: Scotchgard™ Protection on all cloth seats and cloth door trim panels.	■ — ■ — — ■	— ■ — ■ ■ ■
STEERING WHEEL	Simulated leather. Leather.	■ —	— ■
STORAGE TRAY	Full width behind seat on floor.	■	■
SUNSHADE	Color-keyed cloth RH and LH, padded with storage strap on LH unit and visor mirror on RH unit. Crew Cab: Padded, color-keyed cloth RH and LH sunshades with extenders and illuminated mirrors. LH sunshade has storage strap.	■ —	■ ■
TOOLS	Mechanical jack and wheel wrench located behind front seat or on rear compartment floor.	■	■
TRIM PANELS	Extended Cabs have rear, upper, lower and side trim panels and a molded color-keyed, cloth headliner with matching retaining moldings.	■	■
WINDSHIELD WIPERS	Intermittent.	■	■

PREFERRED EQUIPMENT GROUPS

Preferred Equipment Groups (PEGs) are convenient option packages that can save your customers money. They would pay appreciably more by buying all the options in a Preferred Equipment Group as individual options. (Savings based on a comparison of Manufacturer's Suggested Retail Price of option packages vs. MSRP of individual options purchased separately.) See your 1995 Chevrolet Truck Order Guide and Vehicle Price Schedule for specific information and prices.

OPTIONS

These options can be ordered individually in addition to the Preferred Equipment Groups if not already included. See your 1995 Chevrolet Truck Order Guide for specific availability and restrictions. The Option Code is listed in **bold type**.

Air Conditioning	C60
Appearance Package: Chrome Grille, Composite Headlamps and Dual Horns	V22
Axles, Rear:	
3.08	GU4
3.42	GU6
3.73	GT4
4.10	GT5
4.56	HC4
Axle, Rear Locking Differential	G80
Battery, Heavy-Duty, Auxiliary	TP2
Bedliner	BZ1
Bumper Delete Provisions (requires E62 or E53 and YES)	EF1
Bumper, Painted Rear Step (N/A with Silverado Decor)	V43
Bumper, Chromed Rear Step w/ Rub Strip	VB3
Bumper, Chromed Front Deluxe w/Rub Strip	VG3
Chassis Equipment, Heavy-Duty	F44
Cold Climate Package (includes Engine Block Heater)	V10
Convenience Package, Driver's (includes Tilt-Wheel™ Steering and Electronic Speed Control)	ZQ3
Cooling System:	
Engine Oil Cooler	KC4
Heavy Duty Transmission	KNP
Defogger, Rear Window (Extended and Crew Cab Only)	C49
Emissions:	
Federal	FE9
California	YF5
Massachusetts	NG1
Federal Emissions Override	NC7
Cal./Mass. Emissions Override	NB8
Engines:	
4.3L V6 EFI	LB4
5.0L V8 EFI	L03
5.7L V8 EFI	L05
7.4L V8 EFI	L19
6.5L V8 Diesel	L49
6.5L V8 Turbo Diesel	L56
6.5L V8 Turbo Diesel	L65
Alternative Fuel	KL5
Floor Covering:	
Full Floor Rubber, Color-Keyed (requires YE9 Silverado)	BG9
Glass, Solar-Ray™ Deep-Tinted, sides and rear (Extended and Crew Cab only) ..	AJ1

GVWR:	
6100 lb	C5M
6200 lb	Q4B
6600 lb	C5S
6800 lb	C5U
7200 lb	C5Z
8600 lb	C6P
9000 lb	C6U
9200 lb	C6W
10,000 lb	C7A
Keyless Entry, Remote	AU0
Lamps, Roof Marker (included w/Dual Rear Wheels R05) (N/A with 1500 series models)	U01
License Plate Bracket, Front	YK3
Locks, Power Door	AU3
Marketing Packages:	
See Order Guide for details:	
Convenience Package	R9A
Bright Appearance Package	R9B
Leather Package	R9C
Extended Cab only	R9D
Sport Package	R9E
C/K 10703 (w. E52 only)	BYP
Work Truck Package (2500 models only)	APR
Mirrors:	
Exterior Camper Type (LH and RH stainless steel. Mirror head: 7.5" x 10.5")	DF2
Moldings, Body-Side Black with Bright Trim	B85
Off-Road Chassis Package (K1500 only) (includes Bilstein 46 mm shocks and skid plate NZZ) (Requires Silverado Decor) (Reqs YE9)	Z71
Paint, Exterior:	
Solid	ZY1
Conventional Two-Tone (Requires Silverado Decor)	ZY2
Deluxe Two-Tone (Requires Silverado Decor)	ZY4
Pick-up Box Delete (43 models only) ..	ZW9
Radio Equipment:	
Radio Delete	UL5
ETR AM/FM Stereo Radio w/Seek-Scan, Stereo Cassette, Digital Clock	UM6
ETR AM/FM Stereo Radio with Seek-Scan with Automatic Tone Control, Stereo Cassette Deck, Digital Clock, Tilt-Lock™ and Speed-Compensated Volume (with Silverado Decor includes an enhanced performance speaker system)	ULO

ETR AM/FM Stereo Radio with Seek-Scan with Automatic Tone Control, Compact Disc Player, Digital Clock, Tilt-Lock™ and Speed-Compensated Volume (with Silverado Decor includes an enhanced performance speaker system)	UN0
ETR AM/FM Stereo Radio with Seek-Scan with Automatic Tone Control, Compact Disc Player, Cassette Deck, Digital Clock, Tilt-Lock™ and Speed-Compensated Volume (with Silverado Decor includes an enhanced performance speaker system)	UP0
Recreational Sales Package (For information purposes only, YF7 is available for ordering through authorized CQACP manufacturers only)	YF7
Seat Type:	
Bench Seat	A52
60/40 Reclining Split Bench Seat	AE7
Reclining High Back Bucket Seat (includes center console) (Requires Silverado Decor)	A95
Seat, Power Driver's Adjuster (Crew Cab and Ext. Cab models with YE9 Silverado only)	AG9
Seat, Rear 3-Passenger Bench not desired (Extended Cab Only)	YG4
Shock Absorbers, Front and Rear, Heavy-Duty	F51
Gas 46mm Bilstein	FG5
Skid Plate (4x4 only)	NZZ
Snow Plow Prep Package (Reg. Cab 4x4 only)	VYU
Springs, Front Heavy-Duty (4x4 only) ..	F60
Tow Hooks, Front (4x2 only)	V76
Trailering Special Equipment (includes weight distributing hitch platform)	Z82
Transmissions:	
5-Speed Manual w/Overdrive	MG5
5-Speed Manual with Deep Low and Overdrive, H.D.	MW3
4-Speed Electronic Automatic with Overdrive and torque converter clutch	M30
4-Speed Electronically Controlled Automatic w/Overdrive, H.D.	MT1
Wheels:	
Rally Trim	P06
Cast Aluminum (15" x 7") (K1500)	N90
Cast Aluminum (16" x 7") (K1500)	PF4
Chrome Wheels (15" x 7") (K1500)	N83
Dual Rear (C/K3500 only)	R05
Windows, Sliding Rear	A28
Work Truck (See Order Guide for details)	X81

C/K PICKUP

TIRES

**KEY: ALS = ALL-SEASON SBR = STEEL-BELTED RADIAL PLY BW = BLACKWALL WL = WHITE LETTERED HWY = HIGHWAY
OOR = ON-OFF ROAD WOL = WHITE OUTLINE LETTERED**

TIRE DESCRIPTION		FRONT	REAR	SPARE
P235/75R15	ALS/SBR/BW	XFL	YFL	ZFL
P235/75R15	ALS/SBR/WL	XFN	YFN	ZFN
LT215/85R16D	HWY/SBR/BW	XYK	YYK	ZYK
LT215/85R16D	OOR/SBR/BW	XYL	YYL	ZYL
LT225/75R16C	ALS/SBR/BW	XHE	YHE	ZHE
LT225/75R16C	OOR/SBR/BW	XHJ	YHJ	ZHJ
LT225/75R16C	OOR/SBR/WOL	XHN	YHN	ZHN
LT225/75R16D	ALS/SBR/BW	XHP	YHP	ZHP
LT225/75R16D	OOR/SBR/BW	XHR	YHR	ZHR
LT245/75R16C	ALS/SBR/BW	XBK	YBK	ZBK
LT245/75R16C	OOR/SBR/BW	XBN	YBN	ZBN
LT245/75R16C	OOR/SBR/WOL	XBX	YBX	ZBX
LT245/75R16E	ALS/SBR/BW	XHH	YHH	ZHH
LT245/75R16E	OOR/SBR/BW	XGK	YGK	ZGK
LT265/75R16C	OOR/SBR/BW	XGL	YGL	ZGL
LT265/75R16C	OOR/SBR/WOL	XGM	YGM	ZGM

DIMENSIONS

MODEL	C/K 1500 PICKUP REG. CAB/EXT. CAB SPORTSIDE/FLEETSIDE			C/K 2500 PICKUP REG. CAB/EXT. CAB FLEETSIDE			C/K 3500 PICKUP REG. CAB/EXT. CAB FLEETSIDE		C/K 3500 PICKUP CREW CAB	
	C/K 10703 C/K 10753		C/K 10903 C/K 10953	C/K 20753	C/K 20903 C/K 20953		C/K 30903 C/K 30953		C/K 30943	
BODY CODE/ OPTION CODE	E62	E63	E63	C5Z	C5Z	C6P	C6U & C6W	C7A (OPT.)	R14	R05
EXTERIOR DIMENSIONS										
BODY										
Wheelbase (in.)										
Reg. Cab	117.5		131.5	—		131.5	131.5	131.5		168.5
Ext. Cab	141.5		155.5	141.5		155.5	155.5	155.5		—
Overall Length (in.) w/o Rear Bumper										
Reg. Cab	194.4		213.1	—		213.1	213.1			250.1
Ext. Cab	218.4		237.1	218.4		237.1	237.1			—
Overall Height (in.)										
Reg. Cab-2WD		70.4		—	73.0	75.5	75.5	71.7		68.3
Reg. Cab-4WD		73.8		—	74.3	75.8	75.8	73.8		70.2
Ext. Cab-2WD		70.4		73.0	73.0	75.5	75.5	—		—
Ext. Cab-4WD		73.8		74.3	74.3	75.8	75.8	—		—
Maximum Width (in.)	77.1	76.8	76.8	76.8		76.8	76.8	94.3	76.8	94.3
Bumper to Axle (in.)										
Front	35.4		35.4	35.4		35.4	35.4			35.4
Rear Overhang (w/o bumper)	41.4		46.1	41.4		46.1	46.1			46.1
Cab Axle (in.)	42.0		56.0	41.8		55.9	55.9			55.9
Cab to End of Frame (in.)	78.7		97.6	78.7		97.6	97.6			97.0
Bumper to Back of Cab (in.)										
Reg. Cab	111.0			—		111.0	111.0			148.1
Ext. Cab	135.0			135.0		135.0	135.0			—
Ground to Top of Rear Load Floor (in.)										
2WD		29.0		31.6	31.6	34.0	34.0		34.0	34.0
4WD		32.4		32.9	32.9	34.4	34.4		34.4	34.4
Ground Clearance (in.)										
Front/Rear										
Reg. Cab-2WD		7.0/8.4		—	7.8/7.8	8.4/8.1	7.9/7.6		8.0/7.7	8.0/7.7
Reg. Cab-4WD		8.6/9.0		—	8.7/7.7	7.8/8.1	7.2/7.4		8.0/7.7	—
Ext. Cab-2WD		7.2/7.1		7.9/7.7	7.9/7.7	8.4/8.0	7.9/7.6		—	—
Ext. Cab-4WD		9.2/9.6		9.2/8.2	9.2/8.1	9.2/8.1	7.2/7.4		—	—
CARGO BOX										
Inside Length at Floor (in.)	78.7		97.6	78.6		97.6	97.6			97.6
Inside Width at Top (in.) Rear	49.1	61.9	61.9	61.9		61.9	61.9			61.9
Inside Width at Floor (in.)	49.1	64.4	64.4	64.4		64.4	64.4			64.4
Inside Width between Wheelhousings (in.)	49.1			49.1		49.1	49.1			49.1
Inside Height (in.)	19.2			19.2		19.2	19.2			19.2
Tailgate Width (in.) (Top)	50.9	62.0	62.0	62.0		62.0	62.0			62.0
SIGN PANEL AREA (in.)										
Reg. Cab	17 x 48 3/4			17 x 48 3/4		17 x 48 3/4	17 x 48 3/4			—
Ext. Cab	17 x 77 1/2			17 x 77 1/2		17 x 77 1/2	17 x 77 1/2			—
Crew Cab	—			—		—	—			17 x 85

INTERIOR DIMENSIONS

CAB										
Headroom (in.) Front/Rear ¹	39.9/37.5			39.9/37.5		39.9/37.5	39.9/37.5			39.9/40.8
Legroom (in.) Front/Rear ²	41.7/34.8			41.7/34.8		41.7/34.8	41.7/34.8			41.7/37.9
Shoulder Room (in.) Front/Rear ¹	65.4/67.6			65.4/67.6		65.4/67.6	65.4/67.6			65.4/64.9
Hip Room (in.) Front/Rear ¹	60.0/64.2			60.0/64.2		60.0/64.2	60.0/64.2			60.0/59.3
Extended Cab Cargo Volume (cu ft) w/o Rear Seat	40.5			40.5		40.5	40.5			—

¹ Rear dimensions apply to extended cab and crew cab models.

C/K CHASSIS-CAB INTRODUCTION

C/K CHASSIS-CAB

The C/K 3500 Chassis-Cabs are available in two trim levels: the "Cheyenne" (standard) and the "Silverado" (uplevel).

Changes on the C/K Chassis-Cab for 1995 include:

- New exterior colors
- New interior colors
- New right hand assist handle
- 5.7L V8 Engine enhancements
- 7.4L V8 Engine enhancements
- Standard air conditioning with Silverado trim
- Smoother shifting 4L80-E Automatic Transmission
- Standard 4-wheel Anti-Lock Braking System
- Standard Driver's side Air Bag under 8600 lb GVW
- Standard Electric Below-Eye-Line outside rearview mirrors with uplevel decor
- Standard 7-Lead Wiring Harness for trailering (20903 and 30903 models only)
- Standard Driver's Convenience Group: Speed Control and Tilt Steering, and Power Windows and Door Locks with uplevel decor
- Standard ETR AM/FM Stereo Radio with Seek-Scan with Digital Clock
- Optional ETR AM/FM Stereo Radio with seek-scan with auto tone control, digital clock, cassette deck, theft lock and speed compensated volume
- Optional ETR AM/FM Stereo Radio with seek-scan with automatic tone control, digital clock, cassette deck and/or compact disc with theft lock and speed-compensated volume
- New Instrument Panel design, includes two cupholders located in dash and standard tachometer
- New backlit power window and door lock switches
- Seat improvements: Seat design includes new contours and vinyl fabrics and all outboard seats have adjustable head restraints on front and rear seats. Up-level decor includes front power lumbar seats and wide-centered armrests.
- Standard Brake/Transmission Shift Interlock
- 2-Sided Key for simplified entry
- Standard heavy duty Radiator
- Redesigned center console with Reclining High Back Bucket Seats
- Optional Remote Keyless Entry feature

C/K CHASSIS-CAB

MODEL SELECTION SUMMARY

Use the chart below to choose the model that fits your customer's needs. Note that the Maximum Payload is based on curb weight. Also, the Maximum Gross Trailer Weight is based on vehicles that are properly equipped. See your 1995 Chevrolet Truck Order Guide for details.

SERIES	MODEL NUMBER/ BODY CODE/ OPTION CODE	PASSENGER CAPACITY (STD./OPT.)	STANDARD ENGINE/ TRANS.	OPTIONAL ENGINE/ TRANS.	GVWR (LB)	GAWR (LB) FRONT/ REAR	MAXIMUM PAYLOAD (LB) BASED ON CURB WT.	MAX. GROSS TRAILER WT./ TONGUE LOAD (LB) PROPERLY EQUIPPED	MAX. GROSS TRAILER WT./ KINGPIN LOAD (LB) PROPERLY EQUIPPED
TWO-WHEEL DRIVE MODELS									
C2500 REGULAR CAB									
SINGLE REAR WHEELS	CC20903/ ZW9	3/2	5.7L V8/M5	5.7L V8/A4 7.4L V8/M5/A4 6.5L V8/M5/A4	8600	3600/6000	3500/1000	10000/1000 3500/1000	4000/2000 1300/2700 3500/2100
C3500 REGULAR CAB									
SINGLE REAR WHEELS	CC30903/ ZW9	3/2	5.7L V8/M5	5.7L V8/A4 7.4L V8/M5/A4 6.5L V8/M5/A4	9000	3600/6084	3500/1000	9500/1000 10000/1000 3500/1000	9500/2300 13000/3200 3500/2100
DUAL REAR WHEELS	CC30903/ ZW9/R05	3/2	5.7L V8/M5	5.7L V8/A4 7.4L V8/M5/A4 6.5L V8/M5/A4	10000	3600/7500	3500/1000	9500/1000 10000/1000 3500/1000	9500/2300 13000/3200 3500/2100
DUAL REAR WHEELS "STRAIGHT FRAME"	CC31003/ ZW9	3/2	5.7L V8/M5	5.7L V8/A4 7.4L V8/M5/A4 6.5L V8/M5/A4	10000	3880/7500	3500/1000	9500/1000 10000/1000 3500/1000	9500/2300 13000/3200 3500/2100
DUAL REAR WHEELS "STRAIGHT FRAME" HD	CC31003/ ZW9/F44	3/2	5.7L V8/M5	5.7L V8/A4 7.4L V8/M5/A4 6.5L V8/M5/A4	11000	4100/8250	3500/1000	9500/1000 10000/1000 3500/1000	9500/2300 13000/3200 3500/2100
DUAL REAR WHEELS "STRAIGHT FRAME" LONG WHEELBASE	CC31403/ ZW9	3/2	5.7L V8/M5	5.7L V8/A4 7.4L V8/M5/A4 6.5L V8/M5/A4	10000	3880/7500	3500/1000	9500/1000 10000/1000 3500/1000	9500/2300 13000/3200 3500/2100
DUAL REAR WHEELS "STRAIGHT FRAME" LONG WHEELBASE HD	CC31403/ ZW9/F44	3/2	5.7L V8/M5	5.7L V8/A4 7.4L V8/M5/A4 6.5L V8/M5/A4	11000	4100/8250	3500/1000	9500/1000 10000/1000 3500/1000	9500/2300 13000/3200 3500/2100
C3500 HD REGULAR CAB									
DUAL REAR WHEELS	CC31003/ ZW9/C5B	3/—	5.7L V8/M5	7.4L V8/A4 6.5L V8/M5/A4	15000	5000/11000	1000/1000	10000/1000 10000/1000	12500/3100 10500/2600
DUAL REAR WHEELS	CC31403/ ZW9/C5B	3/—	5.7L V8/M5	7.4L V8/A4 6.5L V8/M5/A4	15000	5000/11000	1000/1000	10000/1000 10000/1000	12500/3100 10500/2600
DUAL REAR WHEELS	CC31803/ ZW9	3/—	5.7L V8/M5	7.4L V8/A4 6.5L V8/M5/A4	15000	5000/11000	1000/1000	10000/1000 10000/1000	12500/3100 10500/2600
C3500 CREW CAB									
SINGLE REAR WHEELS	CC30943/ ZW9	6/5	5.7L V8/M5	5.7L V8/A4 7.4L V8/M5/A4 6.5L V8/M5/A4	9000	4100/6084	3500/1000	9000/1000 10000/1000 3500/1000	9000/2200 13000/3100 3500/2000
DUAL REAR WHEELS	CC30943/ ZW9/R05	6/5	5.7L V8/M5	5.7L V8/A4 7.4L V8/M5/A4 6.5L V8/M5/A4	10000	4100/7500	3500/1000	9000/1000 10000/1000 3500/1000	9000/2200 13000/3100 3500/2000

C/K CHASSIS-CAB

SERIES	MODEL NUMBER/ BODY CODE/ OPTION CODE	PASSENGER CAPACITY (STD./OPT.)	STANDARD ENGINE/ TRANS.	OPTIONAL ENGINE/ TRANS.	GVWR (LB)	GAWR (LB) FRONT/ REAR	MAXIMUM PAYLOAD (LB) BASED ON CURB WT.	MAX. GROSS TRAILER WT./ TONGUE LOAD (LB) PROPERLY EQUIPPED	MAX. GROSS TRAILER WT./ KINGPIN LOAD (LB) PROPERLY EQUIPPED
FOUR-WHEEL DRIVE MODELS									
K2500 REGULAR CAB									
SINGLE REAR WHEELS	CK20903/ ZW9	3/2	5.7L V8/M5	5.7L V8/A4 7.4L V8/M5/A4 6.5L V8/M5/A4	8600	4250/8000	1100	7500/900 10000/1000 8000/950	7500/1800 12500/3100 8000/2000
K3500 REGULAR CAB									
SINGLE REAR WHEELS	CK30903/ ZW9	3/2	5.7L V8/M5	5.7L V8/A4 7.4L V8/M5/A4 6.5L V8/M5/A4	9200	4500/6084	1130	7500/900 10000/1000 8000/950	7500/1800 12500/3100 8000/2000
DUAL REAR WHEELS	CK30903/ ZW9/R05	3/2	5.7L V8/M5	5.7L V8/A4 7.4L V8/M5/A4 6.5L V8/M5/A4	10000	4500/7500	1155	7500/900 10000/1000 8000/950	7500/1800 12500/3100 8000/2000
DUAL REAR WHEELS "STRAIGHT FRAME"	CK31003/ ZW9	3/2	5.7L V8/M5	5.7L V8/A4 7.4L V8/M5/A4 6.5L V8/M5/A4	10000	4500/7500	1135	7500/900 10000/1000 8000/950	7500/1800 12500/3100 8000/2000
DUAL REAR WHEELS "STRAIGHT FRAME" HD	CK31003/ ZW9/F44	3/2	5.7L V8/M5	5.7L V8/A4 7.4L V8/M5/A4 6.5L V8/M5/A4	12000	4500/8600	6588	7500/900 10000/1000 8000/950	7500/1800 12500/3100 8000/2000
DUAL REAR WHEELS "STRAIGHT FRAME" LONG WHEELBASE	CK31403/ ZW9	3/2	5.7L V8/M5	5.7L V8/A4 7.4L V8/M5/A4 6.5L V8/M5/A4	10000	4500/7500	1161	7500/900 10000/1000 8000/950	7500/1800 12500/3100 8000/2000
DUAL REAR WHEELS "STRAIGHT FRAME" LONG WHEELBASE HD	CK31403/ ZW9/F44	3/2	5.7L V8/M5	5.7L V8/A4 7.4L V8/M5/A4 6.5L V8/M5/A4	12000	4500/8600	6413	7500/900 10000/1000 8000/950	7500/1800 12500/3100 8000/2000
K3500 CREW CAB									
SINGLE REAR WHEELS	CK30943/ ZW9	6/5	5.7L V8/M5	5.7L V8/A4 7.4L V8/M5/A4 6.5L V8/M5/A4	9200	4500/6084	1374	8500/1000 10000/1000 8000/950	8500/2100 12500/3100 8000/2000
DUAL REAR WHEELS	CK30943/ ZW9/R05	6/5	5.7L V8/M5	5.7L V8/A4 7.4L V8/M5/A4 6.5L V8/M5/A4	10000	4500/7500	1407	8500/1000 10000/1000 8000/950	8500/2100 12500/3100 8000/2000

C/K CHASSIS-CAB

POWERTRAINS

Chevrolet offers a variety of engines, transmissions and rear axle ratios for the C/K Chassis-Cab. The following charts detail basic engine, transmission and axle specifications. See your 1995 Chevrolet Truck Order Guide for details.

ENGINES			
	5.7L V8 HD	7.4L V8 HD	6.5L V8 TURBO DIESEL
Order Code	L05	L19	L65
Availability	All Models	All Models	All Models
SAE Net Horsepower @ rpm	@ 4000	230 @ 3600	190 @ 3400
SAE Net Torque lb ft @ rpm	@ 2400	385 @ 1600	385 @ 1700
Fuel System	EFI	EFI	TIDI
Clutch Size (in.)	12	12	12
Standard Battery Cold Cranking Amps @ 0°F	600	600	2 @ 600 each
Standard Alternator Maximum Capacity (Amps)	100	100	100

TRANSMISSIONS						
Order Code	MANUAL 5-SPEED W/OD HEAVY-DUTY (NP4500)			ELECTRONICALLY CONTROLLED AUTOMATIC 4-SPEED W/OD AND TORQUE CONVERTER CLUTCH, HD (HM4L80-E)		
	MW3			MT1		
Availability	All			All		
Engine Application/ (Order Code)	5.7L V8 HD (L05)	7.4L V8 HD (L19)	6.5L V8 (L65)	5.7L V8 HD (L19)	7.4L V8 HD (L19)	6.5L V8 (L65)
Synchronized Speeds	1/2/3/4/5			—		
Gear Ratios						
First	5.61			2.48		
Second	3.04			1.48		
Third	1.67			1.00		
Fourth	1.00			0.75		
Fifth	0.75			—		
Reverse	5.61			2.08		
Power Take-Off	Yes			No		

REAR AXLES															
Make	GM				GM			GM			GM			Dana	
Capacity (lb)	6000 Semi-Floating				6084 Full-Floating			7500 Full Floating			C3500/K: 8600 Full-Floating			11,000 Full-Floating	
Availability	C/K20903				C/K30903- 30943 W/R04			C/K30903- 30943 W/R05			C/K31003-31403			C3500 HD	
Pinion & Ring Gear Type	Hypoid				Hypoid			Hypoid			Hypoid			Hypoid	
Axle Ratio Code	GU6	GT4	GT5	HC4	GT4	GT5	HC4	GT4	GT5	HC4	GT4	GT5	HC4	GC9	HC7
Ratio	3.42	3.73	4.10	4.56	3.73	4.10	4.56	3.73	4.10	4.56	3.73	4.10	4.56	4.33	5.13
Pinion Teeth	12	11	10	9	11	10	9	11	10	9	11	10	9	9	7
Ring Gear Teeth	41	41	41	41	41	41	41	41	41	41	41	41	41	37	37
Ring Gear Diameter (in.)	9.5	9.5	9.5	9.5	10.5	10.5	10.5	10.5	10.5	10.5	10.5	10.5	10.5	11.5	11.5

Note: Axle Ratio depends on model, powertrain and emissions selected. See your 1995 Chevrolet Truck Order Guide.

FRONT AXLE (K MODELS)							
Make	GM				GM		
Capacity (lb)	4250				4500		
Availability	K20903-K30903				K31003-31403-30943		
Pinion and Ring Gear Type	Hypoid				Hypoid		
Ratio	3.42	3.73	4.10	4.56	3.73	4.10	4.56
Pinion Teeth	12	11	10	9	11	10	9
Ring Gear Teeth	41	41	41	41	41	41	41
Ring Gear Diameter (in.)	8.25	8.25	8.25	8.25	9.25	9.25	9.25
Differential Type	2-Pinion Tapered Roller				2-Pinion Tapered Roller		
Bearings, Type							
Lubricant Capacity (pints)	4.5				6		

Note: Axle Ratio depends on model, powertrain and emissions selected. See your 1995 Chevrolet Truck Order Guide.

C/K CHASSIS-CAB

TRIM LEVELS

Chevrolet offers all Chassis-Cabs in two trim levels, "Cheyenne" and "Silverado." The following chart details major standard features. See your 1995 Chevrolet Truck Order Guide for more details.

CHASSIS EQUIPMENT			
KEY: ■ = STANDARD, — = NOT INCLUDED		CHEYENNE (STANDARD)	SILVERADO (YE9)
BRAKES	Power-assisted, front disc, rear drum; self-adjusting. Four-wheel anti-lock system, includes Brake/Transmission Interlock.	■	■
EXHAUST	Single.	■	■
FRAME	All-welded ladder-type, channel design and boxed front-end section. Section modulus (cu in.): C/K20903 - 30903: 2WD- cu in.; 4WD- cu in. C/K31003 - 31403: 2WD-6.47 cu in.; 4WD-6.76 cu in. 3500HD: 31003, 31403- , 31803- 9.75 cu in. Crew Cab: 7.49 cu in.	■	■
FUEL TANK	34.0 gallon (approx.) capacity on C/K 20903, 30903 and Crew Cab models. 22.0 gallon (approx.) capacity on C/K 31003, 31403 and 3500 HD.	■	■
REAR AXLE	Full-floating on C/K 3500 models. Semi-floating on C/K 20903.	■	■
SHOCK ABSORBERS	Front: 35 mm; Rear: 32 mm (35 mm on C3500 HD).	■	■
STABILIZER BAR	4x2: Front 1.25 inch. 4x4: Front 1.18 inch.	■	■
STEERING	Integral Power.	■	■
SUSPENSION, FRONT	4x2: Independent with computer-selected coil springs (I-beam/leaf springs on C3500 HD). 4x4: Independent with computer-selected torsion bars.	■	■
SUSPENSION, REAR	Semi-elliptic two-stage multi-leaf springs on C/K 20903 models. Semi-elliptic two-stage multi-leaf springs main/auxiliary on C/K 3500 models. (No auxiliary on C3500 HD).	■	■
TOW HOOKS	Two front on 4x4s.	■	■
EXTERIOR EQUIPMENT			
FRONT BUMPER	Bright appearance (w/black rub strip on Crew Cab). Bright appearance w/black rub strip and bright trim and bright rear appearance with step (N/A 3500 HD).	■	—
GLASS	Solar-Ray™ tinted glass.	■	■
GRILLE	Molded plastic painted argent with argent air intake areas. Deluxe front appearance package with dark argent grille and bright trim with argent air intake areas.	■	—
HEADLAMPS	Single rectangular halogen. Composite halogen.	■	—
HORN	Single electric low-note. Dual low- and high-note (standard C3500 HD).	■	—
INSULATION	Hood and cab-to-fender.	—	■
LAMPS	Center high-mounted stop lamp/cargo lamp (N/A on 3500HD). Five amber roof marker lamps on dual rear wheel models only.	■	■
MIRRORS	RH and LH below-eye-line type, painted black. Head size 8.5" x 5.0". RH and LH electric below-eye-line outside rearview, painted black. Head size 8.5" x 5.0"	■	—
SPARE TIRE AND WHEEL	Full-size (20903 and 30903 models only).	■	■
SPARE TIRE CARRIER	Winch-type carrier mounted under frame at rear (20903 and 30903 models only).	■	■
TIRES	Four on single rear wheel models and six on dual rear wheel models. C/K 20903, C/K 30903 and C/K 30943 w/R04: LT245/75R16E. C/K 3500 w/R05 (except C/K 30903): LT225/75R16 C/D. 3500 HD: 225/70R 19.5F (See Order Guide for details).	■	■
WHEELS	Silver painted steel wheels with black hub ornament. C/K 20903, C/K 30903 and C/K 30943 w/R04: 16.0" x 6.5". C/K 3500 w/R05 (except C/K 30903): 16.0" x 6.0". Crew Cab: 16.0" x 6.5"; w/R05: 16.0" x 6.0" (rear only). 3500 HD: 19.5" x 6.0". Rally wheel trim. Crew Cab: Rally trim.	■	—
WHEEL OPENING FLARES	Front.	■	■
WIRING	7-lead wiring harness for trailing purposes (20903 and 30903 models only).	■	■

C/K CHASSIS-CAB

INTERIOR EQUIPMENT		CHEYENNE (STANDARD)	SILVERADO (YE9)
KEY: ■ = Standard, — = Not Included			
AIR CONDITIONING	Front.	—	■
ARMRESTS	RH and LH padded integral with door panels.	■	■
CAB BACK PANELS	Color-keyed carpet.	—	■
CIGARETTE LIGHTER	Located on instrument panel. Includes ashtray light and two auxiliary power outlets.	■	■
CUPHOLDERS	Two located in dash.	■	■
DOME LAMP	Switch in LH and RH door jamb (two lamps with front door-actuated switches on Crew Cab). (Crew Cab includes switches in all doors.)	■ —	■ ■
DOOR TRIM	Vinyl color-keyed door trim panels with padded insert armrest, large easily accessible door handles, and door reflectors. Color-keyed soft vinyl with cloth insert, map pockets with carpet trim, large easily accessible door handles, door reflectors with light. NOTE: Scotchgard™ protection on all cloth panel and trim.	■ —	— ■
DOOR PILLAR ROOF SIDE PANELS	Color-keyed.	—	■
DOOR SILL PLATE	Color-keyed.	■	■
DOORS	Side door guard beams.	■	■
DRIVER'S CONVENIENCE GROUP	Speed Control and Tilt Steering Wheel. Power windows and door locks.	—	■
FLOOR COVERING	Embossed black rubber mat (Crew Cab only). Embossed color-keyed rubber mat (03 models). Color-keyed carpeting with removable color-keyed rubber floor mats. NOTE: Scotchgard™ protection on all cloth floor coverings.	■ ■ —	— — ■
GAGES	Including fuel level, odometer, oil pressure, speedometer, telltale lights, engine temperature, voltmeter and tachometer.	■	■
GLOVE BOX	Latched door.	■	■
HEADLINER	Cloth with matching retainer moldings, color-keyed.	■	■
HEADLAMP WARNING BUZZER	Headlamps on.	■	■
HEATER	Deluxe heater and defogger with side window defogger.	■	■
INSULATION	Provided on dash panel, cowl top and sides, and doors. Extra insulation is provided with diesel engines. Plus insulation on headliners. Plus insulation on Regular Cab Panels.	■ — —	■ ■ ■
MIRRORS	10-inch rearview.	■	■
RADIOS	ETR AM/FM stereo radio with seek-scan and digital clock. Includes two 6" diameter front door mounted speakers and two 4" x 6" rear mounted speakers located at rear above door (4 speakers in all). ETR AM/FM stereo radio with seek-scan, digital clock, cassette deck, includes two 6" diameter front door mounted speakers, and two 4" x 6" rear mounted speakers located at rear above door (4 speakers in all).	■ —	— ■
SEATS	Regular Cab: Front 3-passenger bench with head restraints and folding backrest. Crew Cab: Front 3-passenger bench with head restraints and folding backrest and rear 3-passenger bench with folding backrest. NOTE: Scotchgard™ Protection on all cloth seats and cloth door trim panels.	■ ■	— ■
STEERING WHEEL	Simulated leather. Leather.	■ —	— ■
STOWAGE TRAY	Full width behind seat on floor (N/A 3500HD).	—	■

C/K CHASSIS-CAB

INTERIOR EQUIPMENT (CONT.)			
KEY: ■ = Standard, — = Not Included		CHEYENNE (STANDARD)	SILVERADO (YE9)
SUNSHADES	Color-keyed RH and LH padded with cloth covering, storage strap on LH unit and visor mirror on RH unit. Crew Cab: Padded, color-keyed RH and LH sunshades with extenders and illuminated mirrors. LH sunshade has storage strap.	■ —	■ ■
TOOLS	Mechanical jack and wheel wrench located behind front seat or on rear compartment floor (N/A 3500HD).	■	■
WINDSHIELD WIPERS	Intermittent.	■	■

PREFERRED EQUIPMENT GROUPS

Preferred Equipment Groups (PEGs) are convenient option packages that can save your customers money. They would pay appreciably more by buying all the options in a Preferred Equipment Group as individual options. (Savings based on a comparison of Manufacturer's Suggested Retail Price of option packages versus MSRP of individual options purchased separately.) See your 1995 Chevrolet Truck Order Guide and Vehicle Price Schedule for specific information and prices.

OPTIONS

These options can be ordered individually in addition to the Preferred Equipment Groups if not already included. See your 1995 Chevrolet Truck Order Guide for specific availability and restrictions. The Option Code is listed in **bold type**.

Air Conditioning	C60
Appearance Package includes Chrome Grille, Composite Alloy Wheel Covers and Dual Horns:	V22
Axles, Rear	
3.42	GU6
3.73	GT4
4.10	GT5
4.56	HC4
4.63	GK9
5.13	HC7
Axle, Rear Locking Differential (N/A 3500 HD)	G80
Axle, Rear Wide Track, 92.2-in. wide (C/K 31003, 31403 only)	GTY
Battery, Heavy-Duty Auxiliary (540 CCA) (N/A 3500 HD or diesel engine)	TP2
Chassis, Heavy-Duty	F44
Cold Climate Package (includes Engine Block Heater, Antifreeze protection to -32°F and special insulation)	V10
Convenience Group: Tilt-Wheel™ Steering and Electronic Speed Control	ZQ3
Cooling System, Heavy Duty Transmission (N/A 3500 HD)	KNP
Defogger, Rear Window (Crew Cab only)	C49
Emissions:	
Federal	FE9
Massachusetts	NG1
California	YF5
Federal Emissions Override	NC7
Cal./Mass. Emissions Override	NB8
Engines (see Powertrains)	
5.7L V8	L05
7.4L V8	L19
6.5L V8 Turbo Diesel	L65
Alternative Fuel	KL5
Floor Covering, Full-Floor, Rubber, Color-Keyed (Reqs. Silverado Decor)	BG9

Glass, Solar-Ray™ Deep Tinted, sides and rear (Crew Cab only)	AJ1
GVWR:	
8600 lb	C6P
9200 lbs	C6U
10,000 lb	C6W
11,000 lb	C7A
12,000 lb	C7E
15,000 lb	C7L
15,000 lb	C5B
Keyless Entry, Remote (Requires Silverado Decor)	AU0
Locks: Power door	AU3
Lamps, Roof Marker (included w/ Dual Rear Wheels R05)	U01
Lenses, Plate Bracket	TK3
Marketing Packages See Order Guide for details.	
Convenience Package	R9A
Appearance Package	YF2
Mirrors, Exterior Below-Eye-Line Type (LH and RH stainless steel. Mirror head: 9.0" x 6.5") (N/A on Crew Cab) (N/A C3500 HD)	D45
Mirrors, Exterior Camper Type (LH and RH stainless steel. Mirror head: 7.5" x 10.5")	DF2
Mirrors, Exterior West Coast Type (LH and RH stainless steel. Mirror head: 7.0" x 16.0")	DG5
Paint, Exterior: Solid	ZY1
Radio Equipment:	
Radio Delete (N/A with Silverado Decor)	UL5
ETR AM/FM Stereo Radio w/Seek-Scan, Stereo Cassette, Digital Clock	UM6
ETR AM/FM Stereo Radio with Seek- Scan with Automatic Tone Control, Stereo Cassette Deck, Digital Clock, Theft Lock and Speed-Compensated Volume (with Silverado Decor includes an enhanced performance speaker system)(N/A with 3500 HD)	ULO

ETR AM/FM Stereo Radio with Seek- Scan with Automatic Tone Control, Compact Disc Player, Digital Clock, Theft Lock and Speed-Compensated Volume with Silverado Decor includes an enhanced performance speaker system)(N/A with 3500 HD)	UN0
ETR AM/FM Stereo Radio with Seek- Scan with Automatic Tone Control, Compact Disc Player, Cassette Deck, Digital Clock, Theft Lock and Speed- Compensated Volume with Silverado Decor includes an enhanced performance speaker system) (N/A with 3500 HD)	UP0
Seat Type:	
Bench Seat	A52
60/40 Reclining Split Bench Seat (N/A 3500HD)	AE7
Reclining High Back Bucket Seat (includes center console) (N/A with 3500HD)	A95
Seat, Power Driver's Adjuster (Crew Cab model with Silverado Decor only)	AG9
Skid Plate (4WD models only)	NZZ
Snow Plow Prep Package (4WD Reg. Cab only)	VYU
Springs (torsion bars), Front Heavy-Duty (4x4 only)	F60
Stabilizer Shaft, Rear (C/K 31003, 31403 only)	F61
Tank, Fuel (rear-mounted 31 gal. (approx.) Capacity (C/K 31003- 31403 and C31803 only)	NK7
Tow Hooks, Front (4 x 2 only)	V76
Transmissions:	
5-Speed Manual with Deep Low Overdrive, HD	MW3
Electronically-Controlled 4-Speed Automatic, Overdrive, HD	MT1
Wheels:	
Rally Trim (N/A C3500 HD)	P06
Dual Rear	R05
Single Rear	R04
Windows, Sliding Rear	A28

C/K CHASSIS-CAB

TIRES					
KEY: ALS = ALL-SEASON SBR = STEEL-BELTED RADIAL PLY BW = BLACKWALL HWY = HIGHWAY OOR = ON-OFF ROAD					
TIRE DESCRIPTION			FRONT	REAR	SPARE
LT215/85R16D		HWY/SBR/BW	XYK	YYK	ZYK
LT215/85R16D		OOR/SBR/BW	XYL	YYL	ZYL
LT225/75R16C		ALS/SBR/BW	XHE	—	—
LT225/75R16D		ALS/SBR/BW	XHP	YHP	ZHP
LT225/75R16D		OOR/SBR/BW	XHR	YHR	ZHR
LT245/75R16E		ALS/SBR/BW	XHH	YHH	ZHH
LT245/75R16E		OOR/SBR/BW	XGK	YGK	ZGK
225/70R 19.5F (C3500 HD)		HWY/SBR/BW	XTN	YTN	ZTN

DIMENSIONS

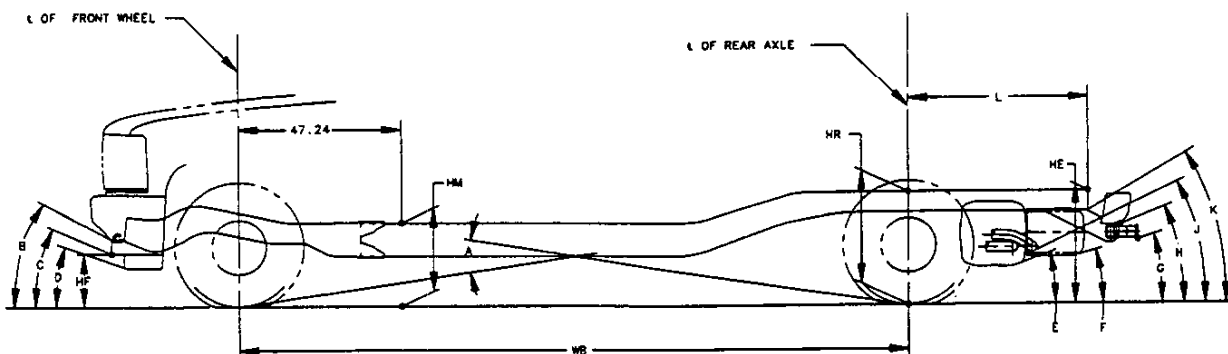
MODEL	C/K 2500 CHASSIS-CAB REGULAR CAB	C/K 3500 CHASSIS-CAB REGULAR CAB		C/K 3500 STRAIGHT FRAME CHASSIS-CAB		C 3500 HD CHASSIS-CAB		CREW CAB CHASSIS-CAB		
MODEL NUMBER	CC20903/ZW9	CC30903/ZW9/R04	CC30903/ZW9/R05	CC/K31003/ZW9	CC/K31403/ZW9	CC/31003/ZW9/C5B	CC31403/ZW9/C5B	CC31803/ZW9	CC/K30943/ZW9/R04	CC/K30943/ZW9/R05

EXTERIOR DIMENSIONS

BODY										
Wheelbase (in.)	131.5	131.5	131.5	135.5	159.5	135.5	159.5	183.5	168.5	168.5
Overall Length (in.)	208.6	208.6	208.6	221.9	245.9	224.5	248.5	272.6	250.1	250.1
Overall Height (in.)										
2WD	75.5	75.5	75.8	73.0	72.7	75.7	75.7	75.7	71.7	68.3
4WD	75.8	75.8	76.3	73.3	73.0	—	—	—	73.8	70.2
Maximum Width (in.)	76.4	76.4	92.2	84.2	84.2	85.8	85.8	85.8	75.8	94.3
Bumper to Axle Frt (in.)	35.4	35.4	35.4	35.4	35.4	37.9	37.9	37.9	35.4	35.4
Rear Axle to End of Frame (in.)	41.7	41.7	41.7	51.0	51.0	51.0	51.0	51.0	46.1	46.1
Cab Axle (in.)	55.9	55.9	55.9	60.0	84.0	60.0	84.0	108.0	35.9	55.9
Cab to End of Frame (in.)	97.6	97.6	97.6	111.0	135.0	111.0	135.0	159.0	97.0	97.0
Bumper to Back of Cab (in.)	111.0	111.0	111.0	111.0	111.0	113.6	113.6	113.6	148.1	148.1
Ground to Top of Frame (in.)										
2WD	31.43	31.43	31.69	31.9	31.9	30.3	30.3	30.3	29.9	29.2
4WD	31.79	31.79	31.82	31.9	31.9	—	—	—	29.9	29.2
Ground Clearance (in.)										
Front-2WD	8.4	8.4	7.9	7.8	7.8	10.8	10.8	10.8	8.0	8.0
Front-4WD	8.7	8.7	7.8	7.6	7.6	—	—	—	8.0	8.0
Rear-2WD	8.1	8.1	7.6	7.6	7.6	8.0	8.0	8.0	7.7	7.7
Rear-4WD	7.7	7.7	8.1	7.4	7.4	—	—	—	7.7	7.7
Frame Width (in.)	45.3	45.3	45.3	34.0	34.0	34.0	34.0	34.0	45.3	45.3
Turning Diameter Curb-to-Curb (ft.)										
2WD	45.7	45.7	45.7	46.7	52.9	45.97	52.94	59.8	56.7	56.8
4WD	45.1	45.1	45.1	47.6	54.8	—	—	—	57.6	57.6
SIGN PANEL AREA (in.)	17 X 48.75	17 X 48.75	17 X 48.75	17 X 48.75	17 X 48.75	17 X 48.75	17 X 48.75	17 X 48.75	17 X 85	17 X 85

INTERIOR DIMENSIONS

CAB										
Headroom (in.) Front	39.9	39.9	39.9	39.9	39.9	39.9	39.9	39.9	39.9	39.9
Rear	—	—	—	—	—	—	—	—	40.8	40.8
Legroom (in.) Front	41.7	41.7	41.7	41.7	41.7	41.7	41.7	41.7	41.7	41.7
Rear	—	—	—	—	—	—	—	—	37.9	37.9
Shoulder Room (in.) Front	65.4	65.4	65.4	65.4	65.4	65.4	65.4	65.4	65.4	65.4
Rear	—	—	—	—	—	—	—	—	64.9	64.9
Hip Room (in.) Front	60.0	60.0	60.0	60.0	60.0	60.0	60.0	60.0	60.0	60.0
Rear	—	—	—	—	—	—	—	—	59.3	59.3



LETTER DESIGNATOR DEFINITIONS

FRAME HEIGHTS AND LENGTHS

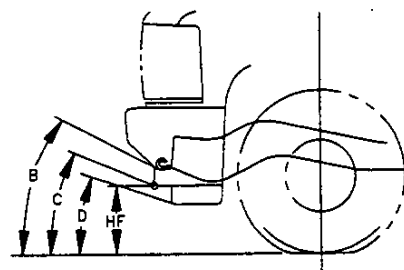
- L** Centerline of axle to end of frame
- HF** Bottom of bumper to ground
- HM** Inside top of frame to ground
- HR** Top of frame to ground at centerline of rear axle
- HE** Top of frame to ground

ANGLE(S)

- A** Ramp breakover

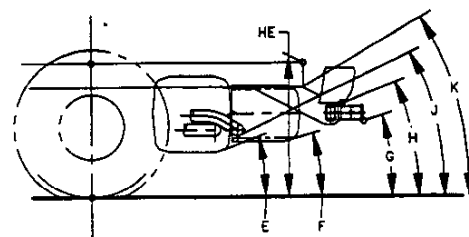
ANGLE(S) (APPROACH)

- B** Tow hooks
- C** Front bumper
- D** Spoiler



ANGLE(S) (DEPARTURE)

- E** Fuel tank
- F** Spare tire
- G** Platform hitch
- H** Rear bumper
- J** Exhaust
- K** Chassis



Note: All weights are in pounds and all dimensions are in inches.

Chassis Frame Height and Ramp Angle Data

C 10000 Models

C10703 117.5" Wheelbase		Frame Heights at Base Model Curb Weight				Frame Heights and Angular Dimensions are shown at Maximum GAWR Front and Rear																		
GVW/Tire	L	Base Model Curb Weight			GAWR		HF	HM	HR	HE	HF	HM	HR	HE	A	B	C	D	E	F	G	H	J	K
		Frnt	Rr	Ttl	Frnt	Rr																		
6100 P235/75R15		2212	1563	3775	3150	3686	15.3	19.0	27.5	28.3	12.8	15.4	22.8	23.1	18		25	16		15	13	19	19	29

C10753 141.5" Wheelbase		Frame Heights at Base Model Curb Weight				Frame Heights and Angular Dimensions are shown at Maximum GAWR Front and Rear																		
GVW/Tire	L	Base Model Curb Weight			GAWR		HF	HM	HR	HE	HF	HM	HR	HE	A	B	C	D	E	F	G	H	J	K
		Frnt	Rr	Ttl	Frnt	Rr																		
6200 P235/75R15	36.8	2386	1682	4068	3500	3686	15.0	18.6	27.3	28.1	12.7	15.3	23.0	23.3	15		25	16		14	13	17	19	30

C10903 131.5" Wheelbase		Frame Heights at Base Model Curb Weight				Frame Heights and Angular Dimensions are shown at Maximum GAWR Front and Rear																		
GVW/Tire	L	Base Model Curb Weight			GAWR		HF	HM	HR	HE	HF	HM	HR	HE	A	B	C	D	E	F	G	H	J	K
		Frnt	Rr	Ttl	Frnt	Rr																		
6100 P235/75R15	41.7	2287	1629	3916	3150	3686	15.2	18.7	27.3	28.1	13.2	15.6	22.8	23.0	16		26	17		15	13	17	19	26

C10906 131.5" Wheelbase		Frame Heights at Base Model Curb Weight				Frame Heights and Angular Dimensions are shown at Maximum GAWR Front and Rear																		
GVW/Tire	L	Base Model Curb Weight			GAWR		HF	HM	HR	HE	HF	HM	HR	HE	A	B	C	D	E	F	G	H	J	K
		Frnt	Rr	Ttl	Frnt	Rr																		
6800 P235/75R15		2263	2442	4705	2950	3968	15.5	18.8	27.2	30.6	13.8	16.5	24.0	27.0	13		27	18	17		13	18	22	
7700 LT245/75R16		2806	2757	5563	3600	6084	15.0	30.8	27.2	18.6	13.3	26.0	23.1	15.7	12		27	17	15		13	17	12	

C10953 155.5" Wheelbase		Frame Heights at Base Model Curb Weight				Frame Heights and Angular Dimensions are shown at Maximum GAWR Front and Rear																		
GVW/Tire	L	Base Model Curb Weight			GAWR		HF	HM	HR	HE	HF	HM	HR	HE	A	B	C	D	E	F	G	H	J	K
		Frnt	Rr	Ttl	Frnt	Rr																		
6200 P235/75R15	41.7	2456	1767	4223	3500	3686	14.7	18.2	27.2	28.0	12.6	15.2	22.9	23.2	15		25	16		10	13	13	12	20

K 10000 Models

K10516		111.5" Wheelbase				Frame Heights at Base Model Curb Weight				Frame Heights and Angular Dimensions are shown at Maximum GAWR Front and Rear														
GVW/Tire	L	Base Model Curb Weight			GAWR		HF	HM	HR	HE	HF	HM	HR	HE	A	B	C	D	E	F	G	H	J	K
		Frnt	Rr	Ttl	Frnt	Rr																		
6250 LT225/75R16		2516	2189	4708	3600	3750	17.6	19.5	28.6		15.2	16.8	25.7		19	25	30	21	25	12	21	26	31	
6450 LT225/75R15		2872	2235	5107	3600	3750	16.7	18.8	28.1		15.2	16.8	25.7		19	25	30	21	25		20	26	31	

K10703		117.5" Wheelbase				Frame Heights at Base Model Curb Weight				Frame Heights and Angular Dimensions are shown at Maximum GAWR Front and Rear														
GVW/Tire	L	Base Model Curb Weight			GAWR		HF	HM	HR	HE	HF	HM	HR	HE	A	B	C	D	E	F	G	H	J	K
		Frnt	Rr	Ttl	Frnt	Rr																		
6100 LT225/75R15		2526	1682	4208	3600	3750	18.6	20.1	29.1	29.5	17.0	17.2	24.9	24.6	19	28	33	25		18	15	21	22	32

K10753		141.5" Wheelbase				Frame Heights at Base Model Curb Weight				Frame Heights and Angular Dimensions are shown at Maximum GAWR Front and Rear														
GVW/Tire	L	Base Model Curb Weight			GAWR		HF	HM	HR	HE	HF	HM	HR	HE	A	B	C	D	E	F	G	H	J	K
		Frnt	Rr	Ttl	Frnt	Rr																		
6600 LT245/75R16	36.8	2711	1776	4487	3600	3750	18.7	20.2	29.4	29.8	16.4	18.8	29.1	29.9	19	27	32	23		24	21	25	39	33

K10903		131.5" Wheelbase				Frame Heights at Base Model Curb Weight				Frame Heights and Angular Dimensions are shown at Maximum GAWR Front and Rear														
GVW/Tire	L	Base Model Curb Weight			GAWR		HF	HM	HR	HE	HF	HM	HR	HE	A	B	C	D	E	F	G	H	J	K
		Frnt	Rr	Ttl	Frnt	Rr																		
6100 LT225/75R16	41.7	2608	1739	4347	3600	3750	18.4	19.9	29.0	29.4	17.0	17.2	24.9	24.6	17	28	33	25		18	15	19	23	28

K10906		131.5" Wheelbase				Frame Heights at Base Model Curb Weight				Frame Heights and Angular Dimensions are shown at Maximum GAWR Front and Rear														
GVW/Tire	L	Base Model Curb Weight			GAWR		HF	HM	HR	HE	HF	HM	HR	HE	A	B	C	D	E	F	G	H	J	K
		Frnt	Rr	Ttl	Frnt	Rr																		
7200 LT245/75R16		2576	2558	5134	3600	4000	19.2	20.2	28.5		17.3	18.0	26.4		18	29	34	26	21		15	20	27	
8050 LT245/75R16		3107	2730	5837	3750	4800	18.9	20.5	29.6		18.2	18.9	27.1		20	22	36	27	22		16	21	29	

K10953		155.5" Wheelbase				Frame Heights at Base Model Curb Weight				Frame Heights and Angular Dimensions are shown at Maximum GAWR Front and Rear														
GVW/Tire	L	Base Model Curb Weight			GAWR		HF	HM	HR	HE	HF	HM	HR	HE	A	B	C	D	E	F	G	H	J	K
		Frnt	Rr	Ttl	Frnt	Rr																		
6600 LT245/75R16	41.7	2794	1900	4694	3600	3750	18.7	20.1	29.2	29.5	17.5	17.9	25.5	25.2	15	29	34	26		17	15	19	24	29
6800 LT245/75R16	41.7	2774	1994	4768	3600	3750	18.7	20.0	28.9	29.1	18.7	18.5	25.3	24.8	16	31	36	28		17	15	19	23	28

C 2000 Models

C20753 141.5" Wheelbase		Frame Heights at Base Model Curb Weight				Frame Heights and Angular Dimensions are shown at Maximum GAWR Front and Rear																		
GVW/Tire	L	Base Model Curb Weight			GAWR		HF	HM	HR	HE	HF	HM	HR	HE	A	B	C	D	E	F	G	H	J	K
		Frnt	Rr	Ttl	Frnt	Rr																		
7200 LT225/75R16	36.8	2512	1756	4268	3600	4670	15.7	19.8	29.3	30.2	14.0	16.7	24.3	24.6	17		28	19	26	18	15	19		32

C20903 131.5" Wheelbase		Frame Heights at Base Model Curb Weight				Frame Heights and Angular Dimensions are shown at Maximum GAWR Front and Rear																		
GVW/Tire	L	Base Model Curb Weight			GAWR		HF	HM	HR	HE	HF	HM	HR	HE	A	B	C	D	E	F	G	H	J	K
		Frnt	Rr	Ttl	Frnt	Rr																		
7200 LT245/75R16		2333	1716	4049	3150	4800	15.9	20.3	29.8	31.1	14.9	17.2	24.5	24.6	19		30	21		18	15	19	22	28
8600 LT245/75R16		2397	1541	3938	3600	6000	16.2	20.8	30.4	31.8	14.7	16.7	23.6	23.6	17		29	20		15	14	18	20	27

C20906 131.5" Wheelbase		Frame Heights at Base Model Curb Weight				Frame Heights and Angular Dimensions are shown at Maximum GAWR Front and Rear																		
GVW/Tire	L	Base Model Curb Weight			GAWR		HF	HM	HR	HE	HF	HM	HR	HE	A	B	C	D	E	F	G	H	J	K
		Frnt	Rr	Ttl	Frnt	Rr																		
8600 LT245/75R16		2416	2852	5268	3600	6084	16.1	20.0	28.9		13.4	17.1	25.8	26.6	18		27	18	21	19	17	21	26	31

C20906 131.5" Wheelbase		Frame Heights at Base Model Curb Weight				Frame Heights and Angular Dimensions are shown at Maximum GAWR Front and Rear																		
GVW/Tire	L	Base Model Curb Weight			GAWR		HF	HM	HR	HE	HF	HM	HR	HE	A	B	C	D	E	F	G	H	J	K
		Frnt	Rr	Ttl	Frnt	Rr																		
8600 LT245/75R16	41.7	2583	1834	4417	3600	6000	16.1	20.1	29.7	23.7	14.7	16.7	23.6	23.6	16		29	20		16	14	18	20	27

K 2000 Models

K20753		141.5" Wheelbase				Frame Heights at Base Model Curb Weight				Frame Heights and Angular Dimensions are shown at Maximum GAWR Front and Rear														
GVW/Tire	L	Base Model Curb Weight			GAWR		HF	HM	HR	HE	HF	HM	HR	HE	A	B	C	D	E	F	G	H	J	K
		Frt	Rr	Ttl	Frt	Rr																		
7200 LT245/75R16	36.8	2809	1805	4614	3750	4410	19.2	21.2	31.0	31.6	18.4	18.7	26.4	26.2	18	31	36	28		19	16	20	26	34

K20903		131.5" Wheelbase				Frame Heights at Base Model Curb Weight				Frame Heights and Angular Dimensions are shown at Maximum GAWR Front and Rear														
GVW/Tire	L	Base Model Curb Weight			GAWR		HF	HM	HR	HE	HF	HM	HR	HE	A	B	C	D	E	F	G	H	J	K
		Frt	Rr	Ttl	Frt	Rr																		
7200 LT225/75R16		2629	1790	4419	3750	4670	19.0	20.9	30.4	31.1	18.0	18.1	25.6	25.8	18	30	35	27		19	15	19	24	29
8600 LT245/75R16		2728	1576	4304	3750	6000	19.0	21.9	32.4	33.5	18.4	18.7	26.4	26.1	20	31	36	28		19	17	20	26	30

K20906		131.5" Wheelbase				Frame Heights at Base Model Curb Weight				Frame Heights and Angular Dimensions are shown at Maximum GAWR Front and Rear														
GVW/Tire	L	Base Model Curb Weight			GAWR		HF	HM	HR	HE	HF	HM	HR	HE	A	B	C	D	E	F	G	H	J	K
		Frt	Rr	Ttl	Frt	Rr																		
8600 LT245/75R16		2762	2820	5582	3750	6000	19.6	21.0	29.9	30.3	18.4	19.0	26.9	26.7	20	31	36	23	22		16	21	28	31

K20953		155.5" Wheelbase				Frame Heights at Base Model Curb Weight				Frame Heights and Angular Dimensions are shown at Maximum GAWR Front and Rear														
GVW/Tire	L	Base Model Curb Weight			GAWR		HF	HM	HR	HE	HF	HM	HR	HE	A	B	C	D	E	F	G	H	J	K
		Frt	Rr	Ttl	Frt	Rr																		
8600 LT245/75R16		2891	1899	4790	3750	6000	18.0	20.2	30.3	31.1	18.4	18.8	26.4	26.2	17	31	36	28		19	17	20	26	30

C 30000 Models

C30903 131.5" Wheelbase		Frame Heights at Base Model Curb Weight				Frame Heights and Angular Dimensions are shown at Maximum GAWR Front and Rear																		
GVW/Tire	L	Base Model Curb Weight			GAWR		HF	HM	HR	HE	HF	HM	HR	HE	A	B	C	D	E	F	G	H	J	K
		Fr	Rr	Ttl	Fr	Rr																		
9000 LT245/75R16	41.7	2629	2037	4666	3600	6084	15.6	21.2	31.8	33.7	14.3	17.7	26.1	26.9	19		28	20		20	18	21	26	31
10000 LT215/85R16	41.7	2645	1896	4541	3600	7500	15.0	21.1	32.4	34.6	13.9	17.2	25.4	26.0	20		27	19		20	16	20	25	30

C30943 168.5" Wheelbase		Frame Heights at Base Model Curb Weight				Frame Heights and Angular Dimensions are shown at Maximum GAWR Front and Rear																		
GVW/Tire	L	Base Model Curb Weight			GAWR		HF	HM	HR	HE	HF	HM	HR	HE	A	B	C	D	E	F	G	H	J	K
		Fr	Rr	Ttl	Fr	Rr																		
9000 LT245/75R16	41.7	2971	2337	5308	4100	6084	15.8	20.3	30.9	32.2	24.1	17.4	26.2	26.8	12		28	19		20	17	21	28	30
9600 LT245/75R16	41.7				4100	6084	15.8	20.6	31.6	33.1	14.1	17.4	26.2	26.8	12		28	19		19	17	21	28	30
10000 LT215/85R16	41.7	2645	1896	4541	4100	7500	15.9	20.4	31.1	32.3	14.5	17.1	24.7	24.9	11		29	20		18	15	19	24	28

C30953 155.5" Wheelbase		Frame Heights at Base Model Curb Weight				Frame Heights and Angular Dimensions are shown at Maximum GAWR Front and Rear																		
GVW/Tire	L	Base Model Curb Weight			GAWR		HF	HM	HR	HE	HF	HM	HR	HE	A	B	C	D	E	F	G	H	J	K
		Fr	Rr	Ttl	Fr	Rr																		
9000 LT245/75R16		2814	2125	4939	3600	6084	15.1	18.1	26.2	26.7	15.9	20.7	31.4	32.8	22		32	23		29	24	28	38	38
10000 LT215/85R16		2813	2437	5250	3600	7500	15.3	20.4	31.4	33.0	14.7	17.5	25.4	25.8	17		29	20		19	16	20	24	30

C31003 135.5" Wheelbase		Frame Heights at Base Model Curb Weight				Frame Heights and Angular Dimensions are shown at Maximum GAWR Front and Rear																		
GVW/Tire	L	Base Model Curb Weight			GAWR		HF	HM	HR	HE	HF	HM	HR	HE	A	B	C	D	E	F	G	H	J	K
		Fr	Rr	Ttl	Fr	Rr																		
9000 LT245/75R16	51.0	2673	1847	4520	3600	6084	15.9	21.5	30.4	32.7	15.1	18.2	24.3	25.0	18		30	21	13		11	13	20	19
10000 LT215/85R16	51.0	2705	1884	4589	4100	7500	15.8	21.7	31.0	33.5	13.0	19.4	26.1	31.9	22		26	17	21		16	18	33	27
11000 LT215/85R16	51.0	2803	1918	4721	4100	8250	15.8	21.7	31.0	33.5	13.2	19.1	28.4	30.9	21		26	17	20		15	18	31	26
15000 225/70R19.5	51.0	3157	2146	5303	5000	11000	21.9	26.0	33.1	34.4	20.4	23.3	29.2	39.7	27		40	32	19		14	16	31	24

C 30000 Models (continued)

C31403		159.5" Wheelbase					Frame Heights at Base Model Curb Weight				Frame Heights and Angular Dimensions are shown at Maximum GAWR Front and Rear													
GVW/Tire	L	Base Model Curb Weight			GAWR		HF	HM	HR	HE	HF	HM	HR	HE	A	B	C	D	E	F	G	H	J	K
		Frt	Rr	Ttl	Frt	Rr																		
9000 LT245/75R16	51.0	2781	1822	4603	3600	6084	15.8	21.1	30.5	32.5	14.8	18.6	25.8	26.8	17		29	21	15				24	21
10000 LT215/85R16	51.0	2812	1860	4672	4100	7500	15.7	21.2	31.0	33.2	14.0	17.9	25.4	26.6	16		28	19	15				23	21
11000 LT215/85R16	51.0	2803	1918	4721	4100	8250	15.8	21.3	30.9	33.0	14.0	17.8	25.1	26.2	16		28	19	15				22	21
15000 225/70R19.5	51.0	3279	2112	5391	5000	11000	21.8	25.8	33.3	34.5	20.5	23.5	29.2	29.6	23		40	32	19				31	24

C31803		183.5" Wheelbase					Frame Heights at Base Model Curb Weight				Frame Heights and Angular Dimensions are shown at Maximum GAWR Front and Rear													
GVW/Tire	L	Base Model Curb Weight			GAWR		HF	HM	HR	HE	HF	HM	HR	HE	A	B	C	D	E	F	G	H	J	K
		Frt	Rr	Ttl	Frt	Rr																		
15000 225/70R19.5		3367	2180	5547	5000	11000	22.2	25.8	33.3	34.2	20.8	23.5	29.3	29.6	20		40	33	22				31	24

K 30000 Models

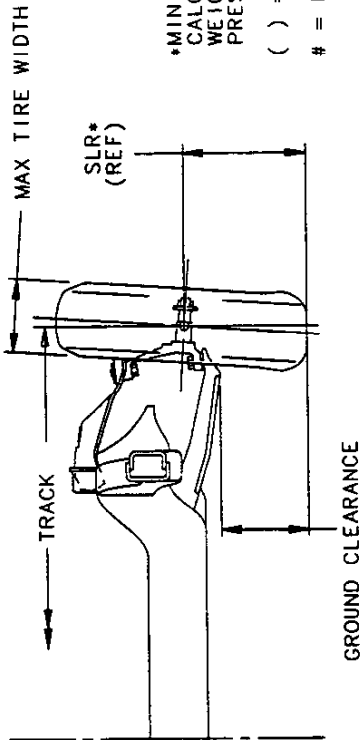
K30903		131.5" Wheelbase					Frame Heights at Base Model Curb Weight				Frame Heights and Angular Dimensions are shown at Maximum GAWR Front and Rear													
GVW/Tire	L	Base Model Curb Weight			GAWR		HF	HM	HR	HE	HF	HM	HR	HE	A	B	C	D	E	F	G	H	J	K
		Frnt	Rr	Ttl	Frnt	Rr																		
9200 LT245/75R16	41.7	2936	2093	5029	3750	6084	18.8	21.4	31.6	32.6	18.6	18.6	26.0	25.6	19	30	36	28		18	16	20	24	29
10000 LT225/75R16	41.7	2962	1973	4935	3750	7500	18.2	21.1	31.6	32.7	18.0	18.4	26.1	25.9	19	29	35	27		20	16	20	25	30

K30943		155.5" Wheelbase					Frame Heights at Base Model Curb Weight				Frame Heights and Angular Dimensions are shown at Maximum GAWR Front and Rear													
GVW/Tire	L	Base Model Curb Weight			GAWR		HF	HM	HR	HE	HF	HM	HR	HE	A	B	C	D	E	F	G	H	J	K
		Frnt	Rr	Ttl	Frnt	Rr																		
9200 LT245/75R16	41.7	3289	2391	5680	4500	6084	18.6	20.8	31.2	31.9	17.0	17.9	26.3	26.4	13	27	33	25		19	17	20	27	30
10000 LT225/75R16	41.7	3324	2269	5593	4500	7500	17.9	20.3	31.0	31.9	16.7	17.7	26.1	26.2	13	26	33	24		19	17	20	26	29

K30953		155.5" Wheelbase					Frame Heights at Base Model Curb Weight				Frame Heights and Angular Dimensions are shown at Maximum GAWR Front and Rear													
GVW/Tire	L	Base Model Curb Weight			GAWR		HF	HM	HR	HE	HF	HM	HR	HE	A	B	C	D	E	F	G	H	J	K
		Frnt	Rr	Ttl	Frnt	Rr																		
10000 LT225/75R16	41.7	3175	2485	5660	3750	7500	18.2	20.6	31.0	31.8	18.1	18.6	26.2	26.0	16	29	35	27		20	16	15	25	30

K31003		135.5" Wheelbase					Frame Heights at Base Model Curb Weight				Frame Heights and Angular Dimensions are shown at Maximum GAWR Front and Rear													
GVW/Tire	L	Base Model Curb Weight			GAWR		HF	HM	HR	HE	HF	HM	HR	HE	A	B	C	D	E	F	G	H	J	K
		Frnt	Rr	Ttl	Frnt	Rr																		
9200 LT245/75R16	51.0	2890	1836	4726	3750	6084	18.9	21.9	32.7	34.2	18.4	19.2	27.3	27.2	20	30	36	28	13	14	13		21	24
10000 LT245/75R16	51.0	3000	1981	4981	4500	7500	18.2	21.3	31.9	33.4	16.5	18.0	27.0	27.4	18	26	32	24	14	14	13		21	25
12000 LT225/75R16	51.0	3031	2026	5037	4500	8600	18.2	21.2	31.9	33.4	16.8	17.6	25.8	25.7	17	27	33	25	12	12	11		18	23

K31403		159.5" Wheelbase					Frame Heights at Base Model Curb Weight				Frame Heights and Angular Dimensions are shown at Maximum GAWR Front and Rear													
GVW/Tire	L	Base Model Curb Weight			GAWR		HF	HM	HR	HE	HF	HM	HR	HE	A	B	C	D	E	F	G	H	J	K
		Frnt	Rr	Ttl	Frnt	Rr																		
10000 LT225/75R16	51.0	3031	2026	5057	4500	7500	18.3	21.0	31.9	33.1	16.7	17.8	26.2	26.4	15	26	33	24	12	23	18		19	23
12000 LT225/75R16	51.0	3110	1977	5087	4500	8600	18.2	21.0	32.0	33.3	16.8	17.6	25.8	25.7	15	27	33	25	12	22	17		17	23

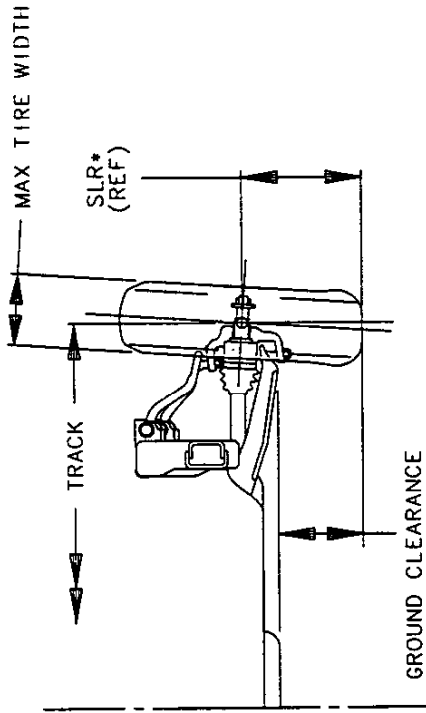


*MINIMUM GROUND CLEARANCE TO BE CALCULATED BY USING GROSS AXLE WEIGHT AND RECOMMENDED TIRE PRESSURE

() = INCHES

= FRT GROSS AXLE WEIGHT RATE

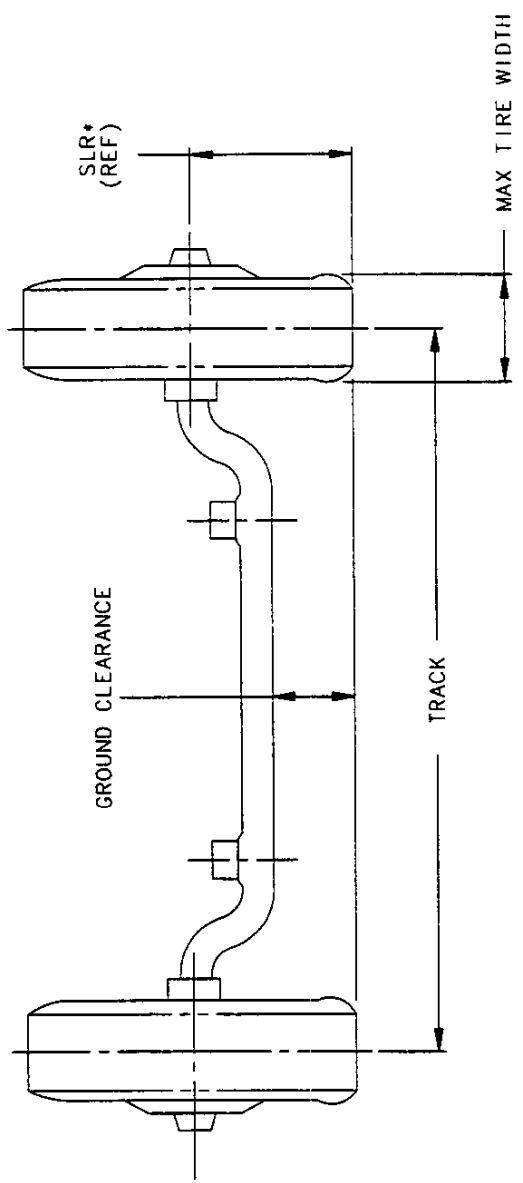
MODEL	TIRE	MAX GW	REAR WHEEL	TRACK	WHEEL OFFSET	GROUND CLEARANCE	MAX TIRE WIDTH
C10003	P225/75R15	5600	SINGLE	1616.0	0/13	172.3 (6.78)	234.0 (9.21)
	P235/75R15	5600	SINGLE	1616.0	0/13	179.9 (7.08)	252.0 (9.92)
	P235/75R15	6100	SINGLE	1616.0	0/13	178.1 (7.01)	252.0 (9.92)
	P275/75R15	5600/6100	SINGLE	1616.0	0/13	171.0 (6.73)	283.0 (11.14)
C10053	P235/75R15	6200	SINGLE	1633.0	0/13	175.1 (6.89)	252.0 (9.92)
	P275/75R15	6200	SINGLE	1633.0	0	167.2 (6.58)	283.0 (11.14)
	P235/75R15	6800	SINGLE	1590.0	0/13	181.0 (7.13)	252.0 (9.92)
C10906	LT225/75R16	7200	SINGLE	1590.0	17.0	193.9 (7.63)	239.0 (9.41)
	LT225/75R16	7200	SINGLE	1590.0	17.0	194.4 (7.65)	239.0 (9.41)
C20003	LT245/75R16	7200	SINGLE	1590.0	17.0	204.8 (8.07)	256.0 (10.08)
	LT245/75R16	7200	SINGLE	1590.0	17.0	202.8 (7.98)	256.0 (10.08)
	LT245/75R16	8600	SINGLE	1607.0	17.0	212.1 (8.35)	256.0 (10.08)
	LT245/75R16	8600	SINGLE	1607.0	17.0	195.2 (7.69)	239.0 (9.41)
C20053	LT225/75R16	7200	SINGLE	1590.0	17.0	203.3 (8.00)	256.0 (10.08)
	LT245/75R16	7200	SINGLE	1590.0	17.0	204.2 (8.04)	256.0 (10.08)
	LT245/75R16	8600	SINGLE	1607.0	17.0	219.7 (8.64)	256.0 (10.08)
	LT245/75R16	8600	SINGLE	1607.0	17.0	194.1 (7.64)	239.0 (9.41)
C20906	LT225/75R16	10000	DUAL	1635.0	127.0	204.2 (8.04)	256.0 (10.08)
	LT245/75R16	10000	DUAL	1635.0	127.0	226.9 (8.93)	244.0 (9.61)
C30900	7.50-16LT	10000	DUAL	1635.0	127.0	189.3 (7.45)	239.0 (9.41)
	LT225/75R16	9600	SINGLE	1607.0	17.0	188.6 (7.43)	234.0 (9.21)
C30943	LT225/75R16	10000	DUAL	1635.0	127.0	201.5 (7.93)	256.0 (10.08)
	LT245/75R16	9000	SINGLE	1607.0	127.0	222.1 (8.74)	244.0 (9.61)
C31003	7.50-16LT	10000/11000	DUAL	1635.0	127.0	191.1 (7.52)	234.0 (9.21)
	LT225/75R16	10000/11000	DUAL	1635.0	127.0	222.1 (8.74)	244.0 (9.61)
C31403	LT225/75R16	10000/11000	DUAL	1635.0	127.0	191.1 (7.52)	234.0 (9.21)
	7.50-16LT	10000/11000	DUAL	1635.0	127.0	222.1 (8.74)	244.0 (9.61)



*MINIMUM GROUND CLEARANCE TO BE CALCULATED BY USING GROSS AXLE WEIGHT AND RECOMMENDED TIRE PRESSURE

() = INCHES

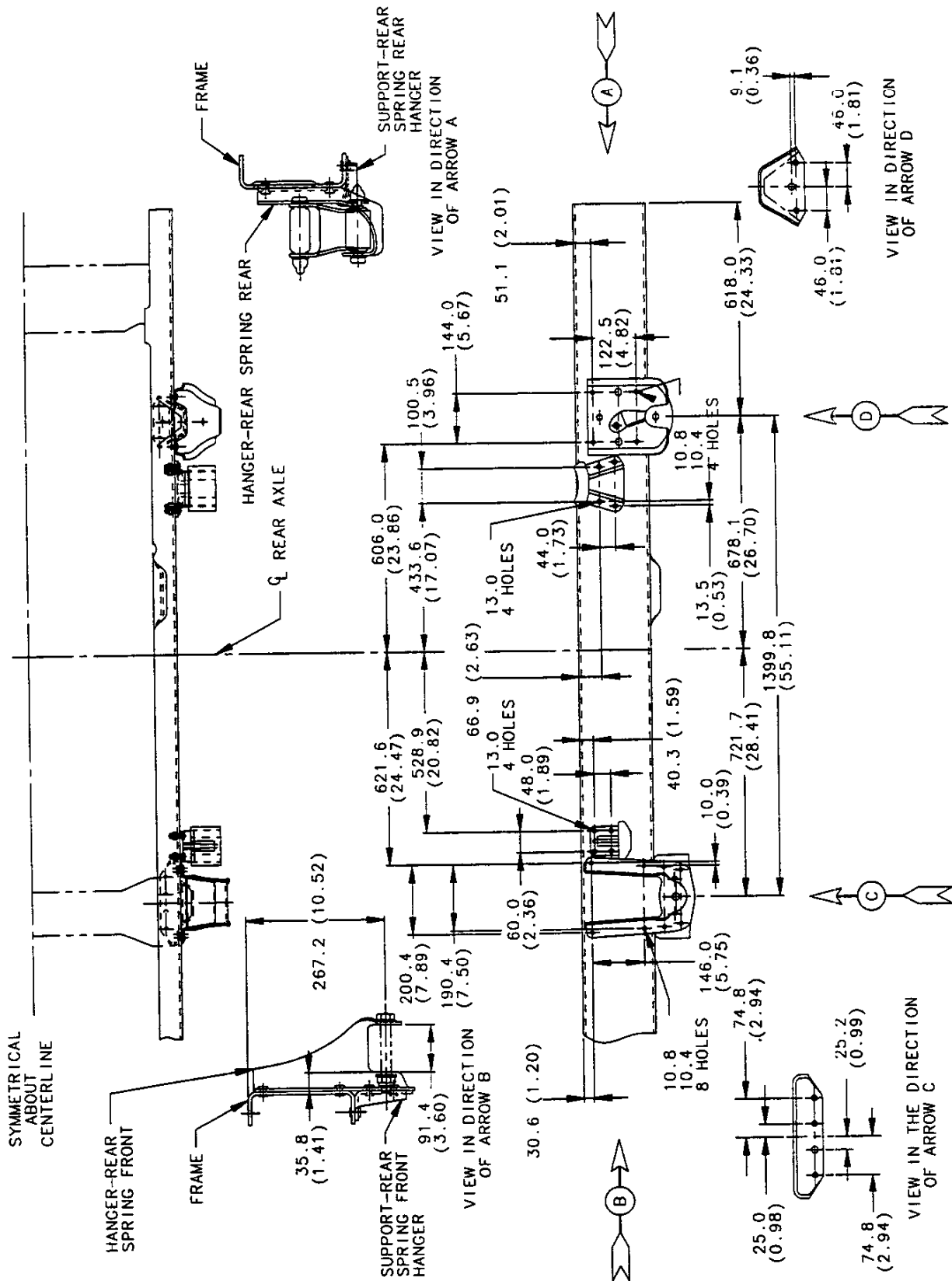
MODEL	TIRE	MAX GWV	REAR WHEEL	TRACK	WHEEL OFFSET	GROUND CLEARANCE	MAX TIRE WIDTH
K10516	LT225/75R16	6250	SINGLE	1628.0	50.0/44.0	250.6 (9.87)	239.0 (9.41)
	LT265/75R16	6250	SINGLE	1628.0	50.0/44.0	273.4 (10.76)	276.0 (10.87)
	LT225/75R16	5600	SINGLE	1628.0	50.0/44.0	220.3 (8.67)	239.0 (9.41)
K10003	LT225/75R16	6100	SINGLE	1628.0	50.0/44.0	219.1 (8.63)	239.0 (9.41)
	LT265/75R16	5600	SINGLE	1628.0	50.0/44.0	244.2 (9.61)	276.0 (10.87)
	LT265/75R16	6100	SINGLE	1628.0	50.0/44.0	241.9 (9.52)	276.0 (10.87)
K10053	LT245/75R16	6200/6600	SINGLE	1628.0	50.0/44.0	229.0 (9.02)	256.0 (10.08)
	LT265/75R16	6100	SINGLE	1628.0	50.0/44.0	241.9 (9.52)	276.0 (10.87)
	LT225/75R16	5600/7200	SINGLE	1628.0	50.0/44.0	240.6 (9.47)	239.0 (9.41)
K10906	LT225/75R16	6100	SINGLE	1628.0	50.0/44.0	239.6 (9.43)	239.0 (9.41)
	LT265/75R16	5600	SINGLE	1628.0	50.0/44.0	264.2 (10.40)	276.0 (10.87)
	LT265/75R16	6100	SINGLE	1628.0	50.0/44.0	262.4 (10.33)	276.0 (10.87)
K20003	LT265/75R16	7200	SINGLE	1628.0	50.0/44.0	262.7 (10.34)	276.0 (10.87)
	LT225/75R16	7200	SINGLE	1628.0	17.0	220.1 (8.67)	239.0 (9.41)
	LT245/75R16	7200	SINGLE	1628.0	17.0	229.0 (9.02)	256.0 (10.08)
K20053	LT245/75R16	8600	SINGLE	1742.0	17.0	160.6 (6.32)	256.0 (10.08)
	LT245/75R16	7200	SINGLE	1628.0	17.0	229.0 (9.02)	239.0 (9.41)
	LT245/75R16	8600	SINGLE	1742.0	17.0	160.6 (6.32)	256.0 (10.08)
K30900	LT245/75R16	8600	SINGLE	1742.0	17.0	193.4 (7.61)	256.0 (10.08)
	LT245/75R16	9200	SINGLE	1742.0	17.0	160.6 (6.32)	256.0 (10.08)
	LT225/75R16	10000	DUAL	1757.0	127.0	150.5 (5.93)	239.0 (9.41)
K30943	7.50-16LT	10000	DUAL	1757.0	127.0	184.8 (7.28)	244.0 (9.61)
	LT245/75R16	9000	SINGLE	1742.0	17.0	186.1 (7.33)	256.0 (10.08)
	LT225/75R16	10000	DUAL	1757.0	127.0	176.2 (6.94)	234.0 (9.21)
K31003	7.50-16LT	10000	DUAL	1757.0	127.0	209.5 (8.25)	244.0 (9.61)
	LT225/75R16	10000/12000	DUAL	1757.0	127.0	148.0 (5.83)	234.0 (9.21)
	7.50-16LT	10000/12000	DUAL	1757.0	127.0	179.0 (7.05)	244.0 (9.61)
K31403	LT225/75R16	10000/12000	DUAL	1757.0	127.0	148.0 (5.83)	234.0 (9.21)
	7.50-16LT	10000/12000	DUAL	1757.0	127.0	179.0 (7.05)	244.0 (9.61)



MODEL	TIRE	MAX GVW	REAR WHEEL	TRACK	WHEEL OFFSET	GROUND CLEARANCE	MAX TIRE WIDTH
C31003	LT225/70R19.5	15000	DUAL	1771.0	127.0	274.4 (10.80)	228.0 (8.98)
C31403	LT225/70R19.5	15000	DUAL	1771.0	127.0	274.4 (10.80)	228.0 (8.98)
C31803	LT225/70R19.5	15000	DUAL	1771.0	127.0	274.4 (10.80)	228.0 (8.98)

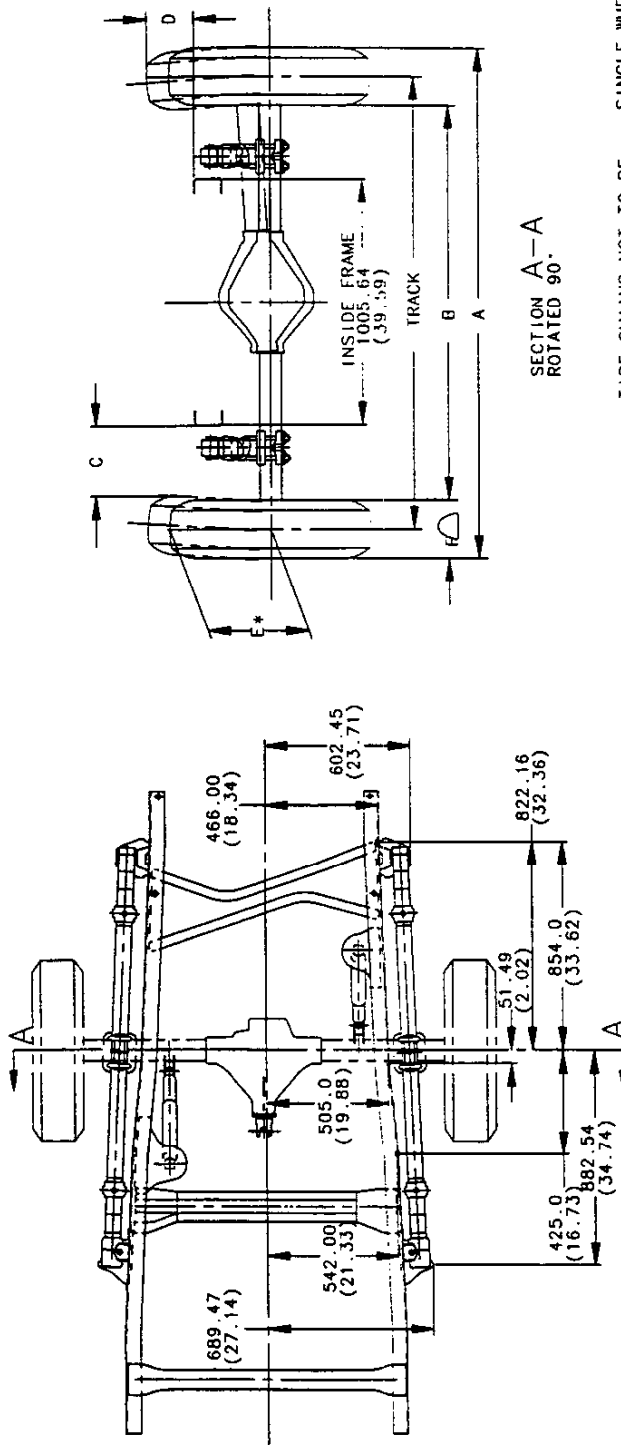
*MINIMUM GROUND CLEARANCE TO BE CALCULATED BY USING GROSS AXLE WEIGHT AND RECOMMENDED TIRE PRESSURE

() = INCHES



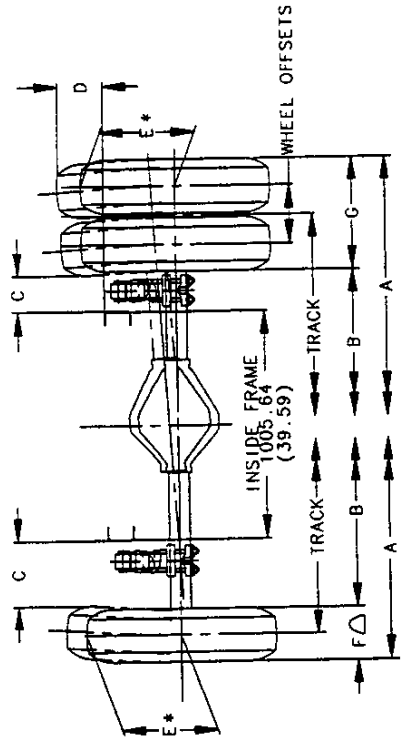
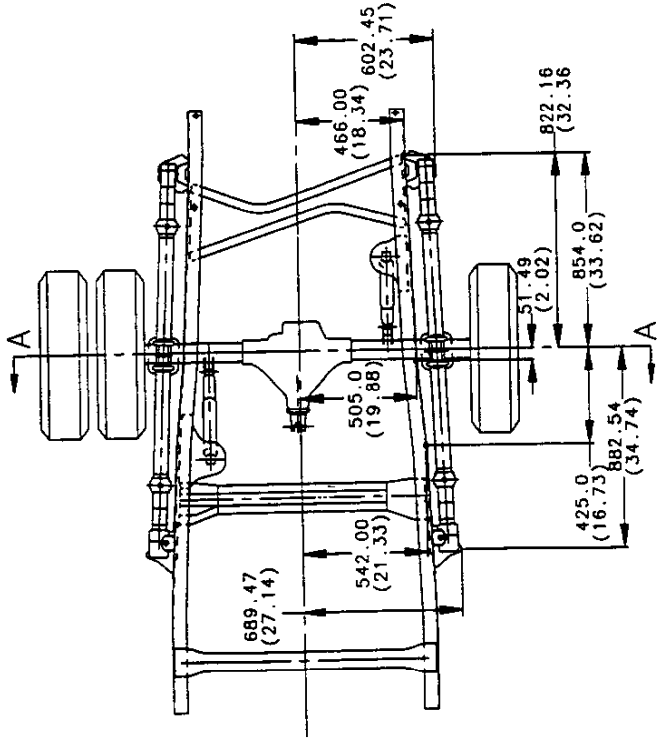
Axle/Suspension

C 3500 HD Chassis Cab, Rear Suspension Hanger Bracket Locations, 15,000 GVWR



SECTION A-A
ROTATED 90°

SERIES	TIRES	GW RANGE	REAR WHEEL	TRACK	WHEEL OFFSET	DIM A	DIM B	DIM C	DIM D	DIM E *	DIM F Δ	TIRE CHAINS NOT TO BE USED WITH K1500 AND LT265/75R16 TIRES	
												A = TRACK + F	B = TRACK - F
C1500	P225/70R15	5600	SINGLE	1642.0	0.0	1886.0	1398.0	169.5	225.0	358.5	244.0		
	P225/75R15	5600	SINGLE	1642.0	0.0	1886.0	1398.0	169.5	236.0	369.5	244.0		
	P235/75R15	5600	SINGLE	1642.0	0.0	1894.0	1390.0	160.5	244.0	374.5	252.0		
K1500	P235/75R15	5600-6800	SINGLE	1616.0	13.0	1868.0	1364.0	148.0	243.0	374.5	252.0		
	P275/60R15	5600-6200	SINGLE	1642.0	0.0	1925.0	1359.0	145.5	235.0	355.5	283.0		
	LT225/75R16	5600-7200	SINGLE	1614.0	44.0	1853.0	1375.0	151.5	219.0	384.0	239.0		
	LT245/75R16	6200-7200	SINGLE	1614.0	44.0	1870.0	1358.0	142.5	232.0	400.0	256.0		
	LT265/75R16	5600-6600	SINGLE	1614.0	44.0	1890.0	1338.0	131.5	241.0	413.5	276.0		
	LT225/75R16	6100-7200	SINGLE	1602.0	50.0	1841.0	1363.0	145.5	218.0	384.0	239.0		
	LT245/75R16	6200-7200	SINGLE	1602.0	50.0	1858.0	1346.0	136.5	232.0	400.0	256.0		
	LT265/75R16	6100-6600	SINGLE	1602.0	50.0	1878.0	1326.0	125.5	249.0	413.5	276.0		
	LT245/75R16	6600	SINGLE	1602.0	50.0	1858.0	1346.0	136.5	232.0	400.0	256.0		



SECTION A-A
ROTATED 90°

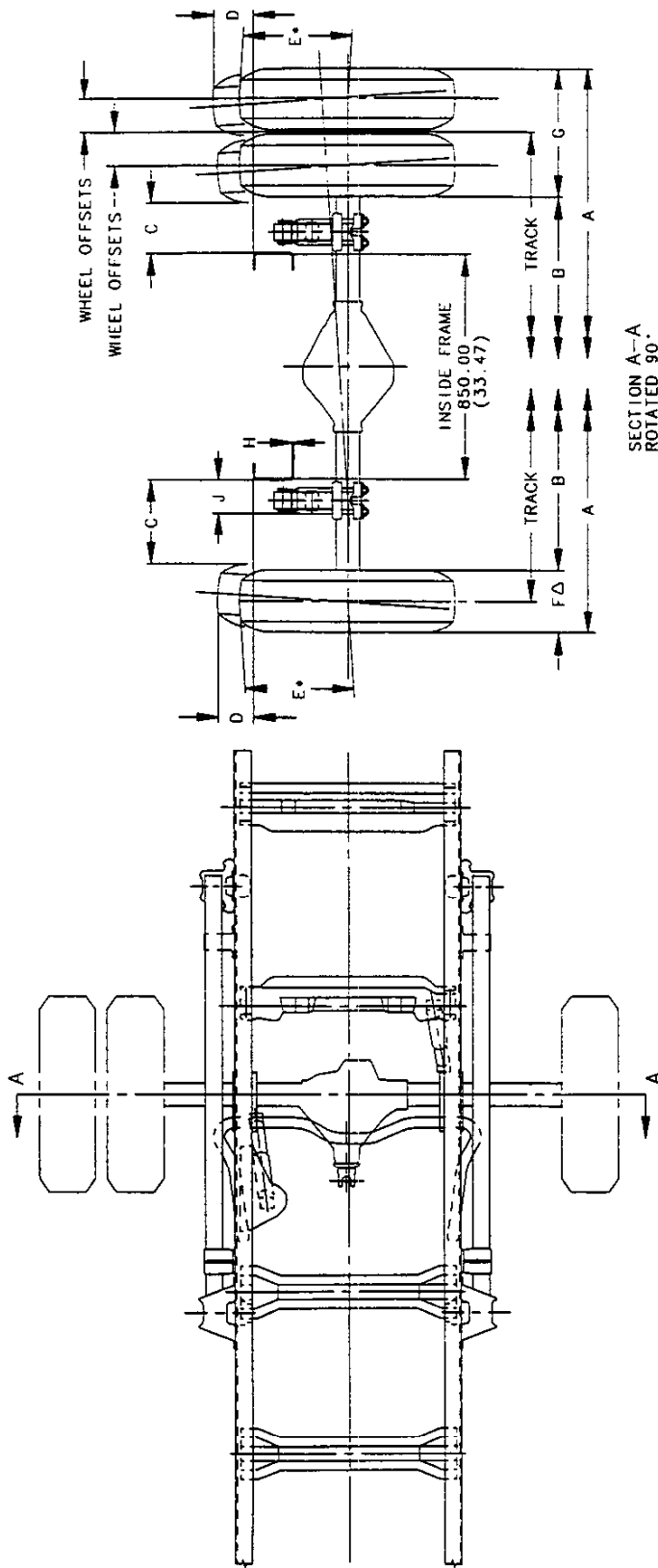
FOR DUAL WHEELS G =
(2*WHEEL OFFSETS)+F
SINGLE WHEELS
A = TRACK + F
B = TRACK - F
DUAL WHEELS
A = TRACK + G
B = TRACK - G

TIRE CHAINS NOT TO BE USED
WITH K1500 AND LT265/75R16 TIRES OR
RPO R05 DUAL REAR WHEELS

* MAX GROWN TIRE RADIUS ON NARROWEST RIM
△ MAX GROWN TIRE WIDTH ON WIDEST RIM

() = INCHES
RR AXLE 9.5" RING GEAR
● RR AXLE 10.5" RING GEAR

SERIES	TIRES	GVW RANGE	REAR WHEEL	TRACK	WHEEL OFFSET	DIM A	DIM B	DIM C	DIM D	DIM E *	DIM F △	DIM G
C2500	LT225/75R16	7200	SINGLE	1616.0	13.0	1855.0	1377.0	150.0	253.0	384.0	239.0	490.0
	LT245/75R16	7200	SINGLE	1616.0	13.0	1872.0	1360.0	141.5	270.5	400.0	256.0	490.0
K2500	LT225/75R16	7200	SINGLE	1622.0	50.0	1861.0	1383.0	153.0	223.5	384.0	239.0	490.0
	LT245/75R16	7200	SINGLE	1622.0	50.0	1878.0	1366.0	144.5	238.0	400.0	256.0	490.0
C2500	LT245/75R16	8600	SINGLE	1624.0	17.0	1880.0	1386.0	153.5	221.0	400.0	256.0	490.0
K2500	LT245/75R16	8600	SINGLE	1624.0	17.0	1880.0	1386.0	153.0	212.5	400.0	256.0	490.0
C2500	LT245/75R16	8600	SINGLE	1652.8	17.0	1908.8	1414.8	167.9	221.0	400.0	256.0	490.0
K2500	LT245/75R16	8600	SINGLE	1652.8	17.0	1908.8	1414.8	167.9	217.5	400.0	256.0	490.0
C3500	LT245/75R16	9000-9600	SINGLE	1634.0	17.0	1890.0	1396.0	158.0	221.0	400.0	256.0	490.0
K3500	LT245/75R16	9200	SINGLE	1634.0	17.0	1890.0	1396.0	158.0	217.5	400.0	256.0	490.0
C3500	LT225/75R16	10000	DUAL	1853.0	127.0	2343.0	1363.0	160.0	171.0	384.0	236.0	490.0
	7.50 X 16LT	10000	DUAL	1853.0	127.0	2343.0	1363.0	160.0	201.5	430.0	236.0	490.0
K3500	LT225/75R16	10000	DUAL	1853.0	127.0	2343.0	1363.0	160.0	161.5	384.0	236.0	490.0
	7.50 X 16LT	10000	DUAL	1853.0	127.0	2343.0	1363.0	160.0	192.0	430.0	236.0	490.0



G = (2 * WHEEL OFFSET) + F
 A = TRACK + G
 B = TRACK - G

SECTION A--A
 ROTATED 90°

Ø SPECIAL EQUIP.
 OPT. 859

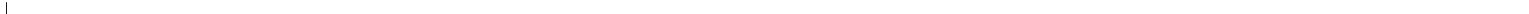
△ MAX CROWN TIRE WIDTH WITH
 WIDEST RIM

() = INCHES * MAX CROWN TIRE RADIUS ON
 NARROWEST RIM

SERIES	TIRES	GW RANGE	REAR WHEEL	TRACK	WHEEL OFFSET	DIM A	DIM B	DIM C	DIM D	DIM E *	DIM F Δ	DIM G	DIM H	DIM J
C3500	LT245/75R16	9,000 9,500	SINGLE	1705.36	17.0	1961.36	1449.36	277.0	174.0	400.0	256.0	—	6.6	126.3
K3500	LT245/75R16	9,200	SINGLE	1705.36	17.0	1961.36	1449.36	277.0	174.0	400.0	256.0	—	6.6	126.3
C3500 W/O GTY	LT225/75R16	10,000	DUAL	1649.52	127.0	2139.52	1159.52	133.7	162.3	384.0	236.0	490.0	6.6	126.3
	7.50 X 16LT	11,000	DUAL	1649.52	127.0	2139.52	1159.52	133.7	160.5	430.0	236.0	490.0	6.6	126.3
K3500 W/O GTY	LT225/75R16	10,000	DUAL	1649.52	127.0	2139.52	1159.52	133.7	162.3	384.0	236.0	490.0	6.6	126.3
	7.50 X 16LT	10,500	DUAL	1649.52	127.0	2139.52	1159.52	133.7	163.1	430.0	236.0	490.0	6.6	126.3
C3500 W/ GTY	LT225/75R16	11,000	DUAL	1852.92	127.0	2342.92	1362.92	235.0	167.6	430.0	236.0	490.0	6.6	126.3
	7.50 X 16LT	11,000	DUAL	1852.92	127.0	2342.92	1362.92	235.0	200.7	430.0	236.0	490.0	6.6	126.3
K3500 W/ GTY	LT225/75R16	12,000	DUAL	1852.92	127.0	2342.92	1362.92	235.0	167.6	384.0	236.0	490.0	6.6	126.3
	7.50 X 16LT	12,000	DUAL	1852.92	127.0	2342.92	1362.92	235.0	200.7	430.0	236.0	490.0	6.6	126.3
C3500	225/70R19.5	15,000	DUAL	1696.20	127.0	2178.20	1214.20	157.2	195.0	408.1	228.0	482.0	6.6 7.6 BASE 184 W/B	140.3



•
•



S-10 PICKUP INTRODUCTION

S-10 PICKUP

The 1995 Chevrolet S-10 Pickup is available in both regular and extended-cab versions, in two-wheel or four-wheel drive configurations. The S-10 Pickup is available in two trim levels: the "Standard" trim and the luxury-level "LS" trim.

Changes on the S-10 Pickup for 1995 include:

- 2.2L (LN2) Engine enhancements
- 4.3L V6 engine enhancements
- A Wide Stance Sport Performance package (ZR2) for the T10653 model provides a unique frame for a 100 mm wider track than the standard model. This package includes extra wide wheelhouse flares on front and rear, as well as unique front fender and pickup box outer panels
- 2-sided Key for simplified entry and key lockup of vehicle is standard on all models.
- Standard below-eye-line Exterior Rear View Mirror
- Standard Air Bag on the Driver's side
- Standard ETR AM/FM Stereo with digital clock
- Optional 60/40 split bench includes armrest with storage compartments and dual cupholders
- Manually adjusted lumbar support control is added to driver and passenger bucket seats (AV5)
- New sunshades include a storage strap on the driver's side. Passenger side receives a vanity mirror on base trim—YC3 includes slider extensions and driver and passenger illuminated vanity mirrors
- Automatic transmission improved for a smoother shift
- Improved cable operation on Cruise Control
- Improved Chassis Packages
- New 15 x 7 Steel Wheels and Hub Caps for 4WD and new 15 x 7 Aluminum Wheels and Hub Caps for 4WD uplevel trims
- Standard P205/75R15 Tires
- Optional Remote Keyless Entry
- New Backlit Power Window and Door Lock Switches
- New 7-wire Trailering Wire Harness

S-10 PICKUP

MODEL SELECTION SUMMARY

Use the chart below to choose the model that fits your customer's needs. Note that the Maximum Payload is based on curb weight. Also, the Maximum Gross Trailer Weight is based on vehicles that are properly equipped. See your 1995 Chevrolet Truck Order Guide for specific details.

SERIES	MODEL NUMBER/ BODY CODE/ OPTION CODE	PASSENGER CAPACITY (STD./OPT.)	STANDARD ENGINE/ TRANS.	OPTIONAL ENGINE/ TRANS.	GVWR (LB)	GAWR (LB) FRONT/ REAR	MAXIMUM PAYLOAD (LB) BASED ON CURB WT.	MAX. GROSS TRAILER WT./ TONGUE LOAD (LB) PROPERLY EQUIPPED
TWO-WHEEL DRIVE MODELS								
S-10 4x2 REGULAR CAB PICKUPS								
S-10 SHORT BOX	CS 10603/E63 Z83/QCE/QCA	3/2	2.2L L4/M5	2.2L L4/A ¹ 4.3L V6/M5/A4 ¹ 4.3L V6/A ²	4200	2500/2300	1257	2000/200 6000/750 6000/750
S-10 SHORT BOX W/OPT. CHASSIS PACKAGE	CS 10603/E63 Z85/QCE/QCA or ZQ8/QPP	3/2	2.2L L4/M5	2.2L L4/A ¹ 4.3L V6/M5/A4 ¹ 4.3L V6/A ²	4600	2500/2700	1654 (Z85) 1631 (ZQ8)	2000/200 6000/750 6000/750
S-10 LONG BOX	CS 10803/E63 Z85/QCE/QCA	3/2	2.2L L4/M5	2.2L L4/A ¹	4600	2500/2700	1606	2000/200
S-10 LONG BOX	CS 10803/E63 Z85/QCE/QCA	3/2	4.3L V6/M5	4.3L V6/A ¹ 4.3L V6/A ²	4900	2500/2700	1715	6000/750 6000/750
S-10 4x2 EXTENDED CAB PICKUPS								
S-10 EXTENDED CAB SHORT BOX	CS 10653/E63 Z85/QCE/QCA	5/4	2.2L L4/M5	2.2L L4/A ¹ 4.3L V6/M5/A4 ¹ 4.3L V6/A ²	4600	2500/2700	1460	2000/200 6000/750 6000/750
FOUR-WHEEL DRIVE MODELS								
S-10 4x4 REGULAR CAB PICKUPS								
S-10 SHORT BOX	CT 10603/E63 Z83/QCE/QCA/QJL or ZR2/QJJ	3/2	4.3L V6/M5	4.3L V6/A4 4.3L V6/A ²	4650	2700/2300	1400 (Z83) 1340 (ZR2)	5500/650 5500/650
S-10 SHORT BOX W/OPT. CHASSIS PACKAGE	CT 10603/E63 ZM6/QEB or Z85/QEB/QBF	3/2	4.3L V6/M5	4.3L V6/A4 4.3L V6/A ²	5150	2700/2700	1390 (ZM6) 1350 (Z85)	5500/650 5500/650
S-10 LONG BOX	CT 10803/E63 Z85/QEB/QBF	3/2	4.3L V6/M5	4.3L V6/A4 4.3L V6/A ²	5150	2700/2700	1305	5500/650 5500/650
S-10 4x4 EXTENDED CAB PICKUPS								
S-10 EXTENDED CAB SHORT BOX	CT 10653/E63 Z83/QCA/QCE/ QJL	5/4	4.3L V6/M5	4.3L V6/A4 4.3L V6/A ²	4650	2700/2300	1381	5500/650 5500/650
S-10 EXTENDED CAB SHORT BOX W/OPT. CHASSIS PACKAGE	CT 10653/E63/ ZR2/QJJ	5/4	4.3L V6/M5	4.3L V6/A4 4.3L V6/A ²	4900	2700/2700	1300	5500/650 5500/650
S-10 EXTENDED CAB SHORT BOX W/OPT. CHASSIS PACKAGE	CT 10653/E63/ Z85/QBF/QEB	5/4	4.3L V6/M5	4.3L V6/A4 4.3L V6/A ²	5150	2700/2700	1276	5500/650 5500/650
S-10 EXTENDED CAB SHORT BOX W/OPT. CHASSIS PACKAGE	CT 10653/E63/ ZM6/QEB	5/4	4.3L V6/M5	4.3L V6/A4 4.3L V6/A ²	5150	2700/2700	1202	5500/650 5500/650

¹ 4.3L V6 CPI (L35)

S-10 PICKUP

POWERTRAINS

Chevrolet offers a variety of engines, transmissions and axle ratios for the S-10 Pickup. The following charts detail basic engine, transmission and axle specifications. See your 1995 Chevrolet Truck Order Guide for specific details.

ENGINES			
	2.2L L4	4.3L V6	4.3L V6
Engine Order Code	LN2	LB4	L35
Availability	S-10 4x2 only	All models	All models
SAE Net Horsepower @ rpm	118 @ 5200	135 @ 4000	131 @ 4500
SAE Net Torque lb ft @ rpm	130 @ 2800	235 @ 2400	260 @ 3400
Fuel System	MFI	TBI	CPI
Clutch Size in. (mm)	9.13 (232 mm)	11.02 (280 mm)	11.02 (280 mm)
Standard Battery Cold Cranking Amps @ 0° F	525	525	525
Standard Alternator Max. Cap. (Amps)	100	100	100

TRANSMISSIONS			
	MANUAL		AUTOMATIC
	MANUAL 5-SPEED W/OVERDRIVE	MANUAL 5-SPEED W/OVERDRIVE (NVG3500)	ELECTRONIC AUTOMATIC 4-SPEED OVERDRIVE W/TORQUE CONVERTER CLUTCH (4L60-E)
Transmission Order Code	MW1	M50	M30
Engine Application (Order Code)	2.2L L4 (LN2)	4.3L V6 (LB4/L35)	2.2L L4/4.3L V6 (LN2/LB4/L35)
Synchronized Speeds	1/2/3/4/5	1/2/3/4/5	—
Gear Ratios			
First	4.03	3.49	3.06
Second	2.37	2.16	1.63
Third	1.49	1.40	1.00
Fourth	1.00	1.00	0.70
Fifth	0.86	0.78	—
Reverse	3.76	3.55	2.29
Shaft Center Distance (mm)	77	85	—

AXLES							
	REAR AXLE				FRONT AXLE (4X4 ONLY)		
	4.3L V6	4.3L V6	2.2L L4/4.3L V6	2.2L L4	4.3L V6		
Make	GM				GM		
Capacity (lb)	2900				2700		
Pinion and Ring Gear Type	Hypoid				Hypoid		
Engine Availability	4.3L V6	4.3L V6	2.2L L4/4.3L V6	2.2L L4	4.3L V6		
Axle Ratio Code	GU4	GU6	GT4	GT5	GU4	GU6	GT4
Ratio	3.08	3.42	3.73	4.10	3.08	3.42	3.73
Pinion Teeth	13	12	11	10	13	12	11
Ring Gear Teeth	40	41	41	41	40	41	41
Ring Gear Diameter (in.)	7.62	7.62 ²	7.62 ¹	7.62	7.25	7.25	7.25

Note: Axle Ratio availability depends on model, powertrain and emissions selected. See your 1995 Chevrolet Truck Order Guide for details.

¹ZR2 Wide Stance uses 8.5 in. ring gear diameter.

²L35 w/manual transmission uses 8.5 in. ring gear diameter w/GU4/G80.

S-10 PICKUP

TRIM LEVELS

Chevrolet offers S-10 Pickup Regular Cab in two trim levels: "Standard" and "LS." The "LS" trim level is standard on Extended Cab models. The following chart details major standard features. See your 1995 Chevrolet Truck Order Guide for specific details.

CHASSIS EQUIPMENT		STANDARD (BASE) REG. CAB ONLY	LS (YC3)
KEY: ■ = STANDARD, — = NOT INCLUDED			
BRAKES	Vacuum Power; front disc, rear drum. Includes rear-wheel anti-lock system on four cylinder engine models and four-wheel anti-lock system on six cylinder engine models.	■	■
FRAME	All-welded ladder-type, channel design and boxed front-end section.	■	■
FUEL TANK	20 gallon (approx.) capacity.	■	■
REAR AXLE	Hypoid, semi-floating.	■	■
SHOCK ABSORBERS	Front: 32 mm; Rear: 32 mm, 46mm Front and Rear with ZM6 and ZR2 Chassis Package.	■	■
STABILIZER BAR	Front: 25 mm with Z83 and ZM6 Chassis Package. Front: 28 mm with Z83 (4WD) Z85 (4WD) and ZR2 Chassis Package. Front: 29 mm with Z85 (2WD) and ZQ8 Chassis Package.	■	■
STEERING	Variable integral power. Ratio 15/13:1.	■	■
SUSPENSION, FRONT	4x2: Independent with computer-selected coil springs. 4x4: Independent with computer-selected torsion bars.	■	■
SUSPENSION, REAR	Two-stage semi-elliptic multi-leaf springs.	■	■
TOW HOOKS	Two front-mounted on 4x4 only.	■	■

EXTERIOR EQUIPMENT		STANDARD (BASE) REG. CAB ONLY	LS (YC3)
AIR DAM	Matches bumper color.	■	■
BUMPERS, FRONT AND REAR-STEP	Dark gray with color-keyed end caps. Color-keyed with color-keyed end caps on 2WD models. Dark gray with dark gray end caps on 4WD models. ZY7 Paint - body color on two and four-wheel drive.	■	■
GLASS	Tinted Solar-Ray™.	■	■
GRILLE	Dark gray. Chrome and Spectra Gray. Bright deluxe front application package.	■	■
HEADLAMPS	Single rectangular halogen. Sealed beam.	■	■
HORN	Dual note.	■	■
INSULATION	Under-hood.	■	■
LAMPS	Engine compartment and center high-mounted stop lamp.	■	■
LICENSE PLATE	Front bracket.	■	■
MIRRORS	Black RH and LH below-eye-line-type. Head size 5.5" x 7.5".	■	■
MOLDING	Black windshield surround.	■	■
PICKUP BOX	Two-tier loading with cargo tie-down loops in each corner.	■	■
SPARE TIRE AND WHEEL	Full-size spare tire and wheel mounted under bed.	■	■
SPARE TIRE CARRIER	Winch-type carrier mounted under frame at rear.	■	■
TIRES	P205/75R15 BW all-season steel-belted radials.	■	■
WHEELS	15.0" x 7.0" steel painted argent with black center cap (2-wheel drive model). 15.0" x 7.0" steel painted argent with black center cap and trim rings (2-wheel drive model). 15.0" x 7.0" steel painted silver with black center cap and trim ring (4-wheel drive model).	■	■
WINDSHIELD WIPERS	Adjustable intermittent with dual fluidic nozzles.	■	■
WIRING	7-lead wiring harness for trailering purposes.	■	■

INTERIOR EQUIPMENT		STANDARD (BASE) REG. CAB ONLY	LS (YC3)
AIR BAG	Driver's side.	■	■
ARMRESTS	RH and LH padded integral with door panels.	■	■
CAB BACK PANELS	Carpeted. Includes Scotchgard™ Protection.	■	■
CIGARETTE LIGHTER	Located on instrument panel. Includes ashtray light. Located on instrument panel. Includes ashtray light and two auxiliary power outlets.	■	■
COAT HOOKS	RH and LH on Regular Cab models. Foldaway on Extended Cab models.	■	■
DOME LAMP	Door-operated with front floor courtesy lamp.	■	■
DOOR SILL PLATE	Black.	■	■
DOOR PANELS	One-piece molded plastic with integral armrests. LH and RH molded pockets. Molded plastic with soft cloth upper insert, integral armrests. LH and RH molded pockets.	■	■
FLOOR COVERING	Embossed dark gray full floor vinyl mat. Color-keyed full floor carpeting with Scotchgard™.	■	■
GAGES	Including voltmeter, oil pressure and engine temperature gages, fuel gage, two odometer and speedometer, warning lights for seat belts, parking brake, direction/hazard signals and high beam.	■	■
GLOVE BOX	Non-locking with door activated light and cupholders.	■	■
GRAB HANDLE	Passenger side.	■	■

S-10 PICKUP

OPTIONS (CONT.)

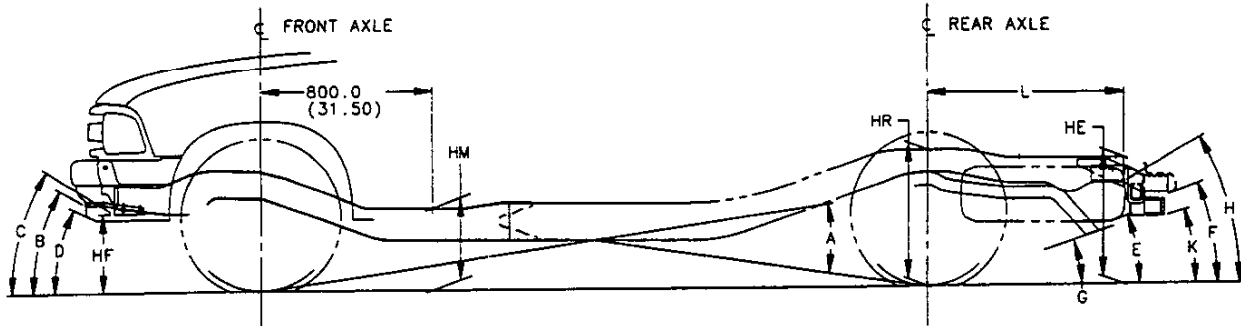
Steering Wheel, Leather Wrapped NP5	Transmissions:	Wheels:
Tachometer. (Incl. with L35 Engine) U16	5-speed manual OD Borg Warner	Aluminum Argent (4x2 only) N60
Transfer Case, Electronic Shift (4x4 only), instrument panel-mounted shift selection switch NP1	(Reqs. LN2) MW1	Cast Aluminum (4x4 only) N90
	5-speed manual overdrive NVG	Special Aluminum (T10 only) 5P2
	(Reqs. LB4/L35) M50	Aluminum, Painted Silver PA3
	Electronic automatic 4-speed OD M30	Window, Sliding Rear A28

TIRES		
KEY: ALS = ALL-SEASON SBR = STEEL-BELTED RADIAL PLY BW = BLACKWALL WL = WHITE LETTERED OOR = ON-OFF ROAD WOL = WHITE OUTLINE LETTERED		
TIRE DESCRIPTION		ORDERING CODE
P215/65R15 WL (4X2)	ALS/SBR	QPP
P205/75R15 BW	ALS/SBR	QCE
P205/75R15 WOL	ALS/SBR	QCA
P205/75R15 WL (4X4)	OOR/SBR	QJL
P235/70R15 BW (4X4)	ALS/SBR	QBF
P235/75R15 WOL (4X4)	OOR/SBR	QEB
31 X 10.5R-15LTC BW	OOR/SBR	QJJ

DIMENSIONS

MODEL	S-10 (REGULAR CAB)	S-10 (REGULAR CAB)	S-10 (EXTENDED CAB)	S-10 (REGULAR CAB)	S-10 (REGULAR CAB)	S-10 (EXTENDED CAB)
MODEL NUMBER	CS10603/E63	CS10803/E63	CS10653/E63	CT10603/E63	CT10803/E63	CT10653/E63
EXTERIOR DIMENSIONS						
BODY						
Wheelbase (in.)	108.3	117.9	122.9	108.3	117.9	122.9
Overall Length (in.)	193.7	204.6	203.3	193.7	204.6	203.3
Overall Height (in.)	62.1	62.1	62.2	63.8	65.4	63.8
Maximum Width (in.)	67.9	67.9	67.9	67.9	67.9	67.9
Bumper to Axle (in.)						
Front (w/ license bracket)	34.5	34.5	34.5	34.5	34.5	34.5
Rear	45.9	52.2	45.9	45.9	52.2	45.9
Cab-to-Axle (in.)	37.4	47.1	37.4	37.4	47.1	37.4
Cab to End of Frame (in.)	73.1	89.0	73.1	73.1	89.0	73.1
Bumper to Back of Cab (in.)	119.9	119.9	119.9	119.9	119.9	119.9
Ground to Top of Rear Load Floor (in.)	19.2	19.2	19.2	19.2	19.2	19.2
Ground Clearance (in.)						
Front	9.2	9.2	9.2	9.2	9.2	9.2
Rear	7.2	7.2	7.2	7.5	7.5	7.5
Turning Diameter Curb-to-Curb (ft.)	36.9	39.8	41.3	37.3	40.2	41.6
CARGO BOX						
Length (in.) at Floor	72.8	88.8	72.8	72.8	88.8	72.8
Inside Width at Top Rear (in.)	54.6	54.6	54.6	54.6	54.6	54.6
Inside Width at Floor (in.)	56.5	56.5	56.5	56.5	56.5	56.5
Inside Width between Wheelhousings (in.)	40.3	40.3	40.3	40.3	40.3	40.3
Inside Height (in.)	17.1	17.1	17.1	17.1	17.1	17.1
Tailgate Width (in.)	54.3	54.3	54.3	54.3	54.3	54.3
Cargo Volume (cu ft)	39.4	48.1	39.4	39.4	48.1	39.4
SIGN PANEL AREA (in.)	15 x 46.25	15 x 46.25	15 x 66.5	15 x 46.25	15 x 46.25	15 x 66.5
INTERIOR DIMENSIONS						
CAB						
Headroom (in.)	39.5	39.5	39.6	39.5	39.5	39.6
Legroom (in.)	42.4	42.4	42.4	42.4	42.4	42.4
Shoulder Room (in.)	57.2	57.2	57.2	57.2	57.2	57.2
Hip Room (in.)	52.0	52.0	52.0	52.0	52.0	52.0
Cargo Volume (cu ft) (in-cab storage area)	—	—	17.3	—	—	17.3

* 43.2 inches with seat in rearmost position.



FRAME HEIGHTS AND LENGTHS

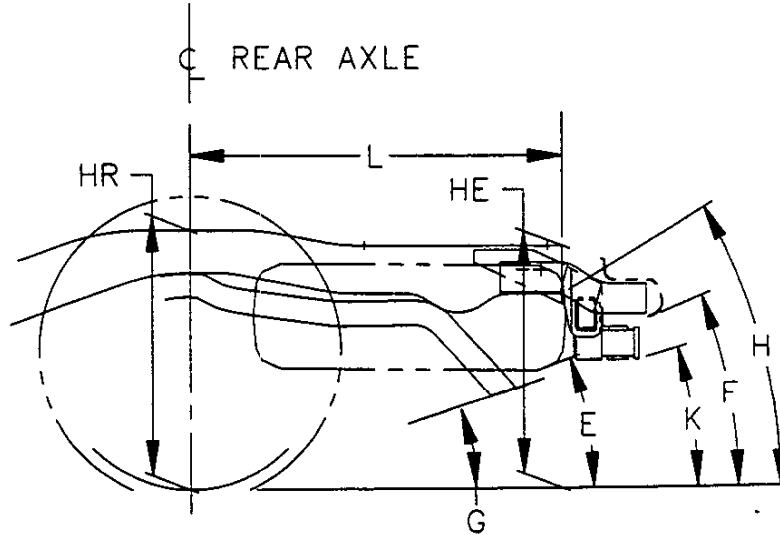
- L** Centerline of axle to end of frame
- HF** Bottom of bumper to ground
- HM** Normal top of frame to ground
- HR** Top of frame to ground at centerline of rear axle
- HE** Top of frame to ground

ANGLE(S)

- A** Ramp breakover

ANGLE(S) (APPROACH)

- B** Tow hooks
- C** Front bumper
- D** Spoiler



ANGLE(S) (DEPARTURE)

- E** Spare tire
- F** Rear bumper
- G** Exhaust
- H** Chassis
- K** Platform hitch

Note: All weights are in pounds and all dimensions are in inches.

S10603 108.0" Wheelbase						Frame Heights at Base Model Curb Weight				Frame Heights and Angular Dimensions are shown at Maximum GAWR Front and Rear													
GVW/Tire	L	Base Model Curb Weight			GAWR		HF	HM	HR	HE	HF	HM	HR	HE	A	B	C	D	E	F	G	H	K
		Frt	Rr	Ttl	Frt	Rr																	
4200 P205/75R15		1685	1298	2988	2500	2300	17.5	14.3	26.4	25.6	14.9	10.9	22.0	20.8	14		25	17	19	16	15	26	14
4600 P205/75R15		1878	1281	3159	2500	2700	16.9	14.4	27.2	26.8	15.1	11.8	23.8	23.1	17		25	17	23	19	21	30	17

S10803 118.0" Wheelbase						Frame Heights at Base Model Curb Weight				Frame Heights and Angular Dimensions are shown at Maximum GAWR Front and Rear													
GVW/Tire	L	Base Model Curb Weight			GAWR		HF	HM	HR	HE	HF	HM	HR	HE	A	B	C	D	E	F	G	H	K
		Frt	Rr	Ttl	Frt	Rr																	
4600 P205/75R15		1722	1312	3034	2500	2700	17.0	14.3	27.1	26.8	14.7	11.1	22.8	22.0	14		25	17	18	16	19	24	14
4900 P205/75R15		1909	1276	3185	2500	2700	16.7	14.1	27.2	26.9	15.4	11.5	22.8	21.7	14		26	18	17	16	18	24	13

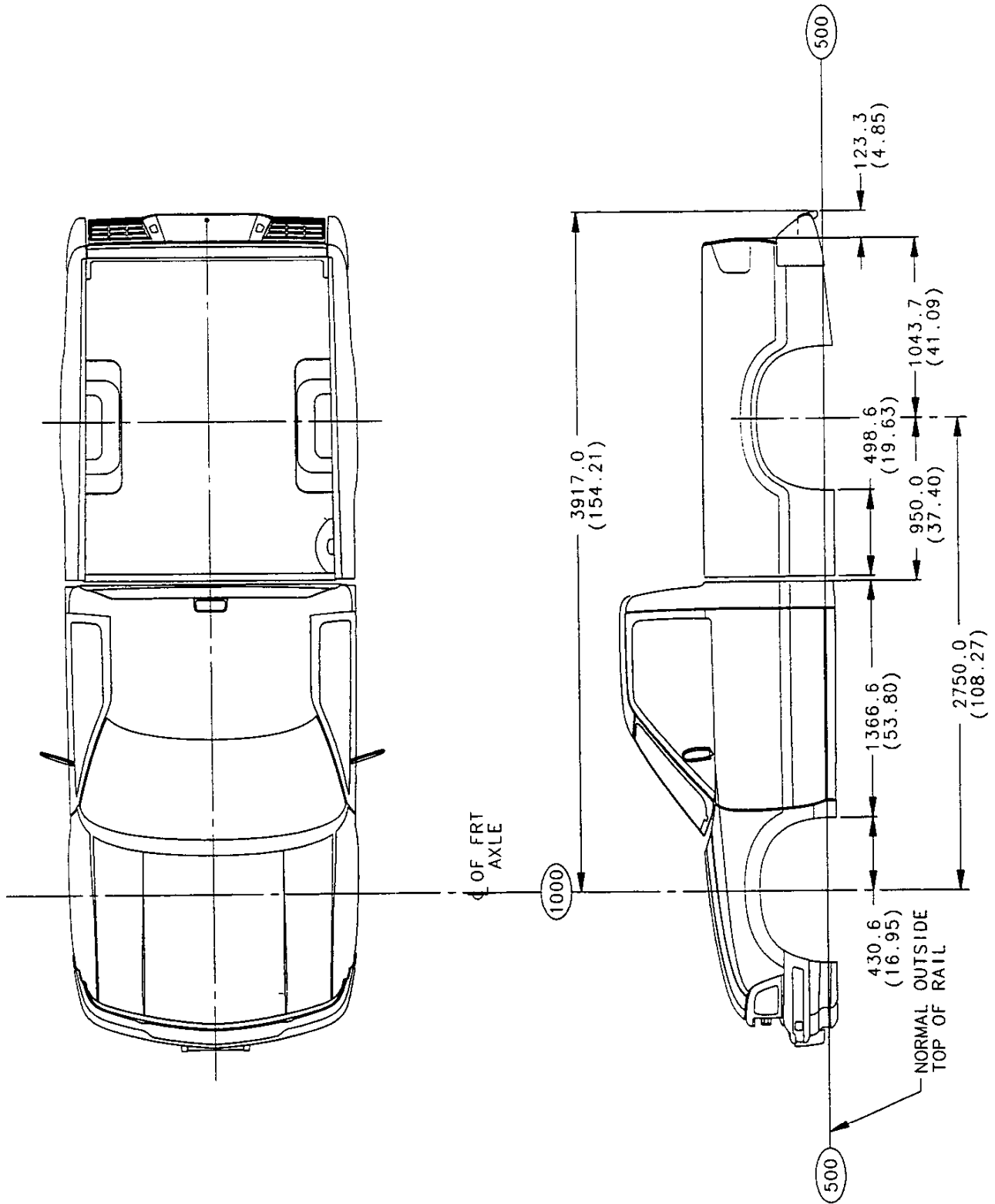
S10653 123.0" Wheelbase						Frame Heights at Base Model Curb Weight				Frame Heights and Angular Dimensions are shown at Maximum GAWR Front and Rear													
GVW/Tire	L	Base Model Curb Weight			GAWR		HF	HM	HR	HE	HF	HM	HR	HE	A	B	C	D	E	F	G	H	K
		Frt	Rr	Ttl	Frt	Rr																	
4600 P205/75R15		1809	1376	3185	2500	2700	17.5	14.4	26.9	26.2	15.4	11.5	22.8	21.7	14		26	18	21	18	18	28	15

T10603 108.0" Wheelbase						Frame Heights at Base Model Curb Weight				Frame Heights and Angular Dimensions are shown at Maximum GAWR Front and Rear													
GVW/Tire	L	Base Model Curb Weight			GAWR		HF	HM	HR	HE	HF	HM	HR	HE	A	B	C	D	E	F	G	H	K
		Frt	Rr	Ttl	Frt	Rr																	
4650 P205/75R15		2147	1353	3500	2700	2300	19.7	16.0	27.3	26.2	18.3	13.8	24.2	22.7	16	27	31	24	21	16	18	29	16
4650 31X10.5R15		2147	1353	3500	3700	2300	21.5	17.7	29.1	27.9	20.1	15.6	26.0	24.4	20	30	34	28	24	18	22	32	19
5150 P235/70R15		2149	1361	3510	2700	2700	20.3	16.3	27.3	26.0	19.2	13.8	23.2	21.2	15	28	31	24	18	18	15	27	14

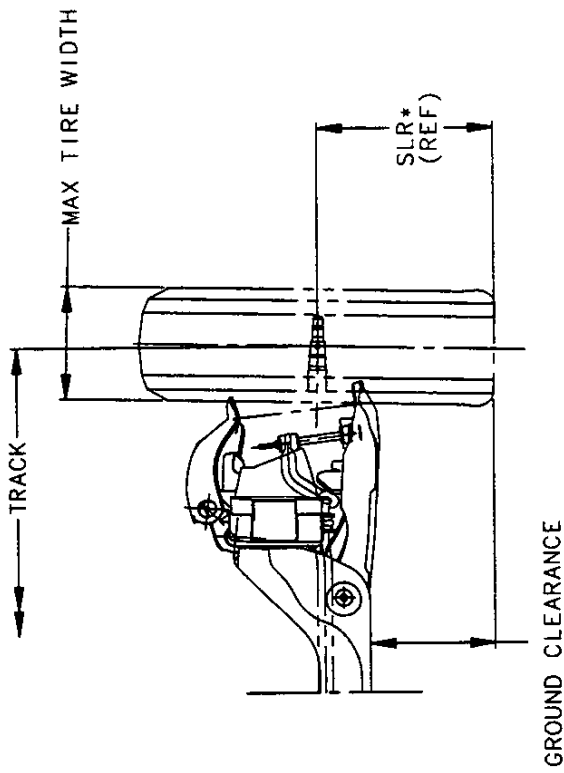
T10803 118.0" Wheelbase						Frame Heights at Base Model Curb Weight				Frame Heights and Angular Dimensions are shown at Maximum GAWR Front and Rear													
GVW/Tire	L	Base Model Curb Weight			GAWR		HF	HM	HR	HE	HF	HM	HR	HE	A	B	C	D	E	F	G	H	K
		Frt	Rr	Ttl	Frt	Rr																	
5150 P235/75R15		2196	1399	3595	2700	2700	22.0	17.6	28.3	26.8	20.1	14.4	23.3	21.0	19	30	33	27	15	18	15	23	19

T10653 123.0" Wheelbase						Frame Heights at Base Model Curb Weight				Frame Heights and Angular Dimensions are shown at Maximum GAWR Front and Rear													
GVW/Tire	L	Base Model Curb Weight			GAWR		HF	HM	HR	HE	HF	HM	HR	HE	A	B	C	D	E	F	G	H	K
		Frt	Rr	Ttl	Frt	Rr																	
4650 P205/75R15		2297	1426	3723	2700	2300	20.1	16.0	27.1	25.7	20.7	15.2	24.2	22.1	20	31	34	28	20	22	17	29	25
4900 31X10.5R15		2352	1600	3952	2700	2700	22.1	17.5	27.9	26.3	22.9	16.6	24.6	22.1	22	35	38	33	20	22	17	35	25
5150 P235/70R15		2273	1475	3748	2700	2700	20.7	16.3	27.0	25.5	21.6	15.2	23.2	20.7	19	32	35	30	18	20	14	27	22

Chassis ST 10003 Pickup, Frame Heights and Ramp Angle Data



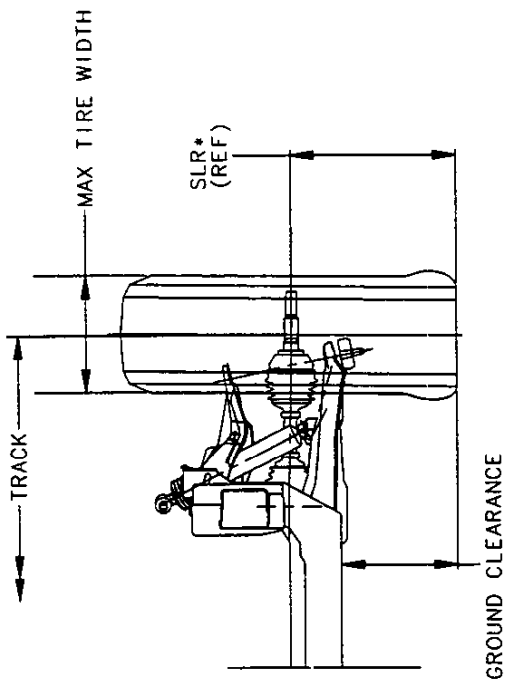
Body ST 10603 Pickup, Regular Cab with Short Box



* MINIMUM GROUND CLEARANCE TO BE CALCULATED BY USING GROSS AXLE WEIGHT AND INFLATING TIRE PRESSURE TO 35 PSI

- ◇ ALL SEASON TIRE
- ON/OFF ROAD TIRE

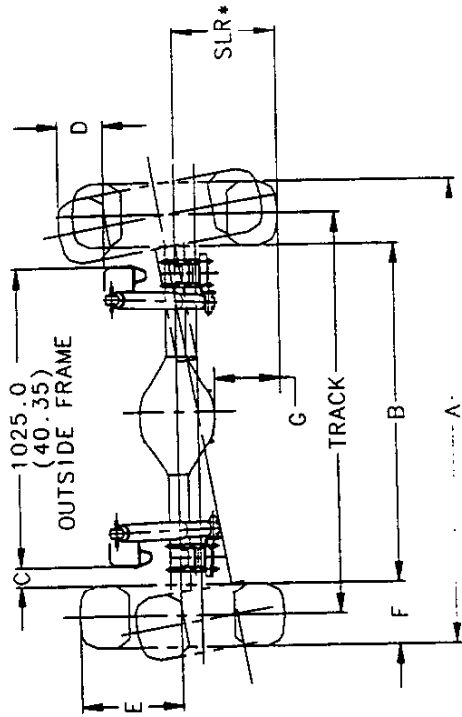
SERIES	TIRES	SLR	GVW RANGE	TRACK	WHEEL OFFSET	GROUND CLEARANCE	MAX TIRE WIDTH
S 10603	P205/75R15	317.0	4200	1383.6	0.0	233.5	224
	P205/75R15	317.0	4600	1383.6	0.0	233.5	224
				1396.4	-6.4	233.5	224
S 10803	P215/65R15	306.0	4600	1396.4	-6.4	222.5	232
				1383.6	0.0	233.5	224
	P205/75R15	317.0	4200-4900	1396.4	-6.4	233.5	224
S 10653	P215/65R15	306.0	4600	1396.4	-6.4	222.5	232
				1383.6	0.0	233.5	224
	P205/75R15	317.0	4600-4900	1396.4	-6.4	233.5	224
S 10516	P215/65R15	306.0	4900	1396.4	-6.4	222.5	232
				1396.4	-6.4	215.0	224
S 10506	P205/75R15	316.0	4785	1396.4	-6.4	215.0	224



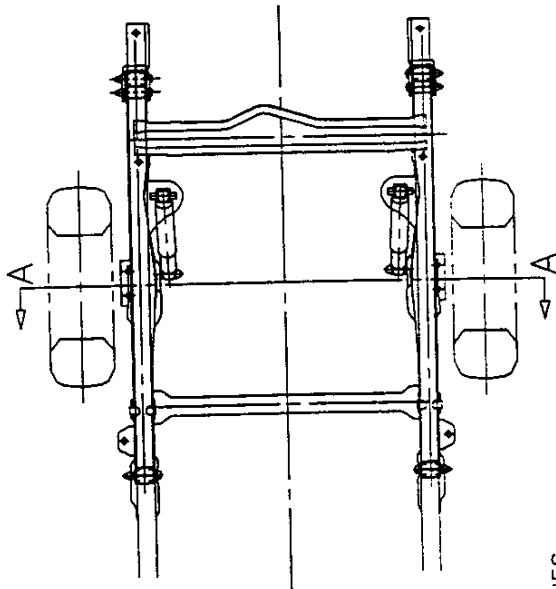
* MINIMUM GROUND CLEARANCE TO BE CALCULATED BY USING GROSS AXLE WEIGHT AND RECOMMENDED TIRE PRESSURE

△ ALL SEASON TIRE
 □ ON/OFF ROAD TIRE

SERIES	TIRES	SLR*	GVW RANGE	TRACK	WHEEL OFFSET	GROUND CLEARANCE	MAX TIRE WIDTH
T 10603	△ P205/75R15	317.0	4650	1453.6	50	217.3	224
	□ P205/75R15	317.0	4650	1453.6	50	217.3	224
	P235/75R15	337.0	5150	1453.6	50	269.8	247
	31 X 10.5	357.0	4650	1553.6	50	289.7	269
T 10803	△ P205/75R15	317.0	4650	1453.6	50	217.3	224
	□ P205/75R15	317.0	4650	1453.6	50	217.3	224
	P235/75R15	337.0	5150	1453.6	50	269.8	247
T 10653	△ P205/75R15	317.0	4650	1453.6	50	217.3	224
	□ P205/75R15	317.0	4650	1453.6	50	217.3	224
	P235/75R15	337.0	5150	1453.6	50	269.8	247
	P205/75R15	316.0	4850	1453.6	50	209.6	228
T 10516	△ P205/75R15	317.0	4650	1453.6	50	217.3	224
	□ P205/75R15	317.0	4650	1453.6	50	217.3	224
	P235/75R15	337.0	5150	1453.6	50	269.8	247
T 10506	P205/75R15	316.0	4850	1453.6	50	209.6	228
	△ P235/70R15	326.0	4850	1453.6	50	220.3	252
	□ P235/75R15	337.0	4850	1453.6	50	231.2	252
	P205/75R15	316.0	5300	1453.6	50	211.2	228
	△ P235/70R15	326.0	5300	1453.6	50	221.3	252
□ P235/75R15	337.0	5300	1453.6	50	232.7	252	



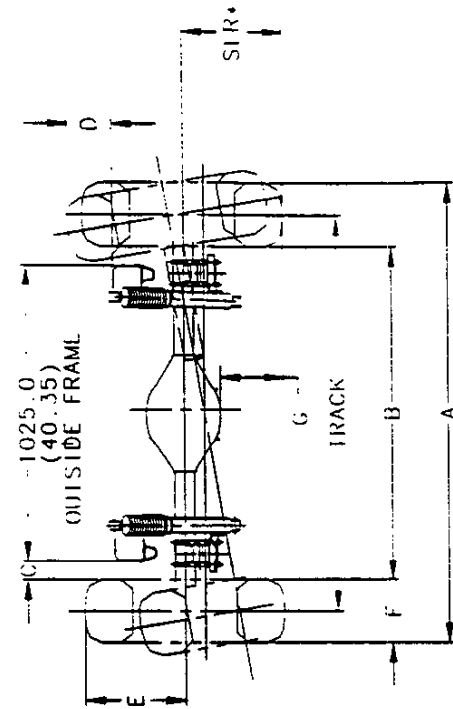
SECTION A--A
ROTATED 90°



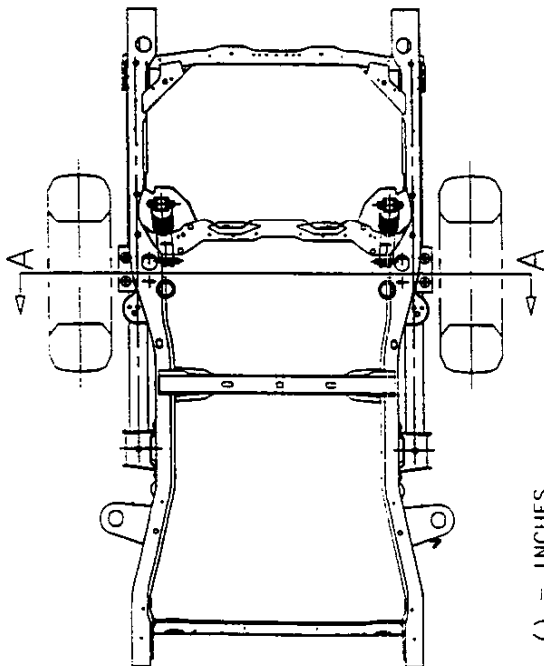
- () = INCHES
- ◇ ALL SEASON TIRE
- ON/OFF ROAD TIRE

* MINIMUM GROUND CLEARANCE TO BE CALCULATED BY USING GROSS AXLE WEIGHT AND INFLATING TIRE PRESSURE TO 35 PSI

SERIES	TIRES	SLR	GVW RANGE	TRACK	WHEEL OFFSET	DIM A	DIM B	DIM C	DIM D	DIM E	DIM F	DIM G
S 10603	P205/75R15	319.0	4200	1387.8	-6.4	1605.8	1169.8	72.4	154.5	344.5	224.0	184.0
	P205/75R15	319.0	4600	1387.8	-6.4	1605.8	1169.8	72.4	154.5	344.5	224.0	184.0
	P215/65R15	307.0	4600	1387.8	-6.4	1613.8	1161.8	68.4	140.5	330.5	232.0	172.0
	P205/75R15	319.0	4200	1387.8	-6.4	1605.8	1169.8	72.4	154.5	344.5	224.0	184.0
S 10803	P215/65R15	307.0	4600	1387.8	-6.4	1613.8	1161.8	68.4	140.5	330.5	232.0	172.0
	P205/75R15	319.0	4900	1387.8	-6.4	1605.8	1169.8	72.4	154.5	344.5	224.0	180.0
	P215/65R15	315.0	4900	1387.8	-6.4	1613.8	1161.8	68.4	140.5	330.5	232.0	172.0
	P215/65R15	307.0	4900	1387.8	-6.4	1605.8	1169.8	72.4	154.5	344.5	224.0	184.0
S 10653	P205/75R15	319.0	4600	1387.8	-6.4	1605.8	1169.8	72.4	154.5	344.5	224.0	180.0
	P205/75R15	315.0	4900	1387.8	-6.4	1605.8	1169.8	72.4	154.5	344.5	224.0	180.0
	◇ P205/75R15	319.0	4650	1399.0	50.0	1617.0	1181.0	78.0	154.5	344.5	224.0	191.0
	□ P205/75R15	321.0	4650	1399.0	50.0	1607.0	1191.0	83.0	154.5	344.5	224.0	186.0
T 10603	□ P205/75R15	321.0	5150	1399.0	50.0	1639.0	1159.0	67.0	178.5	368.5	247.0	202.0
	□ P235/75R15	337.0	5150	1399.0	50.0	1769.0	1231.0	103.0	199.8	389.8	269.0	230.0
	31 x 10.5	361.0	4650	1500.0	50.0	1617.0	1181.0	78.0	154.5	344.5	224.0	191.0
	◇ P205/75R15	319.0	4650	1399.0	50.0	1617.0	1181.0	78.0	154.5	344.5	224.0	186.0
T 10803	□ P205/75R15	321.0	4650	1399.0	50.0	1607.0	1191.0	83.0	178.5	368.5	247.0	202.0
	□ P235/75R15	337.0	5150	1399.0	50.0	1639.0	1159.0	67.0	178.5	368.5	247.0	202.0
	◇ P205/75R15	319.0	4650	1399.0	50.0	1617.0	1181.0	78.0	154.5	344.5	224.0	191.0
T 10653	□ P205/75R15	321.0	4650	1399.0	50.0	1607.0	1191.0	83.0	154.5	344.5	224.0	186.0
	□ P235/75R15	337.0	5150	1399.0	50.0	1639.0	1159.0	67.0	178.5	368.5	247.0	202.0



SECTION A-A
ROTATED 90°



() = INCHES

◇ ALL SEASON TIRE

□ ON/OFF ROAD TIRE

* MINIMUM GROUND CLEARANCE TO BE CALCULATED BY USING GROSS AXLE WEIGHT AND INFLATING TIRE PRESSURE TO 35 PSI

SERIES	TIRES	SLR	GW RANGE	TRACK	WHEEL OFFSET	DIM A	DIM B	DIM C	DIM D	DIM E	DIM F	DIM G
S 10516	P205/75R15	314	4450	1387.8	-6.4	1627.0	1159.8	68.0	180.4	349.5	228.0	206.0
	P205/75R15	314	4785	1387.8	-6.4	1627.0	1159.8	68.0	160.4	349.5	228.0	193.5
T 10516	◇ P205/75R15	314	4850	1399.0	50.0	1627.0	1171.0	68.0	180.4	349.5	228.0	204.0
	□ P235/75R15	334	4850	1399.0	50.0	1651.0	1147.0	56.0	205.2	374.5	252.0	224.0
	◇ P235/70R15	323	4850	1399.0	50.0	1651.0	1147.0	56.0	191.3	360.4	252.0	209.0
T 10506	◇ P205/75R15	314	5300	1399.0	50.0	1627.0	1171.0	68.0	160.4	349.5	228.0	190.0
	□ P235/75R15	334	5300	1399.0	50.0	1651.0	1147.0	56.0	185.2	374.5	252.0	207.0
	◇ P235/70R15	323	5300	1399.0	50.0	1651.0	1147.0	56.0	171.3	360.4	252.0	199.0



1995 GENERAL MOTORS CORPORATION

INFORMATION REGARDING

CONSUMER INFORMATION TRUCK - CAMPER LOADING

PUBLISHED MARCH 1994



CHEVROLET MOTOR DIVISION
30007 VAN DYKE AVENUE
WARREN, MICHIGAN 48090



GMC TRUCK DIVISION
31 JUDSON STREET
PONTIAC, MICHIGAN 48342-2230

1995 GENERAL MOTORS TRUCKS

Consumer Information

Truck - Camper Loading

CONSUMER INFORMATION REGULATION 575.103 issued by the National Highway Traffic Safety Administration requires manufacturers of trucks capable of accommodating slide-in camper bodies to provide information concerning proper load and proper load distribution in truck-camper applications.

This Consumer Information booklet is designed to provide basic information relating to load capabilities of 1995 General Motors truck models which are adaptable to slide-in camper applications. Information contained herein is applicable to the truck buyer who already owns a 1995 General Motors truck or to a prospective truck purchaser.

The regulation also provides that proper truck-camper loading information is to be maintained in truck dealerships and be made available to all prospects on request. This booklet relates to the 1995 General Motors truck models recommended for slide-in camper applications and is to be used as a consumer information brochure.

Product specifications or data contained herein may change periodically. When a revision of this booklet is supplied to truck dealers, it is the dealers' responsibility to make the revised information available to the public.

Chevrolet's and GMC's 1988 and newer Full-Size C/K Pickups feature a styling that is more aerodynamic than prior models. Aftermarket manufacturers offer many products, such as slide-in campers, camper shells, and bedliners, designed to fit on the new pickups. However, some products designed for use on Chevrolet Full-Size Pickups, built prior to the 1988 model year or R-V models through the 1991 model year, may not fit in the bed of this vehicle. Please confirm the compatibility of any aftermarket product you intend to install on your new truck by consulting the product manufacturer.

Chevrolet's and GMC's 1995 S/T Series Pickups feature new styling that is more aerodynamic than models from previous years. Some aftermarket items designed for 1993 and earlier S/T Series Pickups may not fit in the bed of this new vehicle. Please consult the product manufacturer for compatibility prior to purchase.

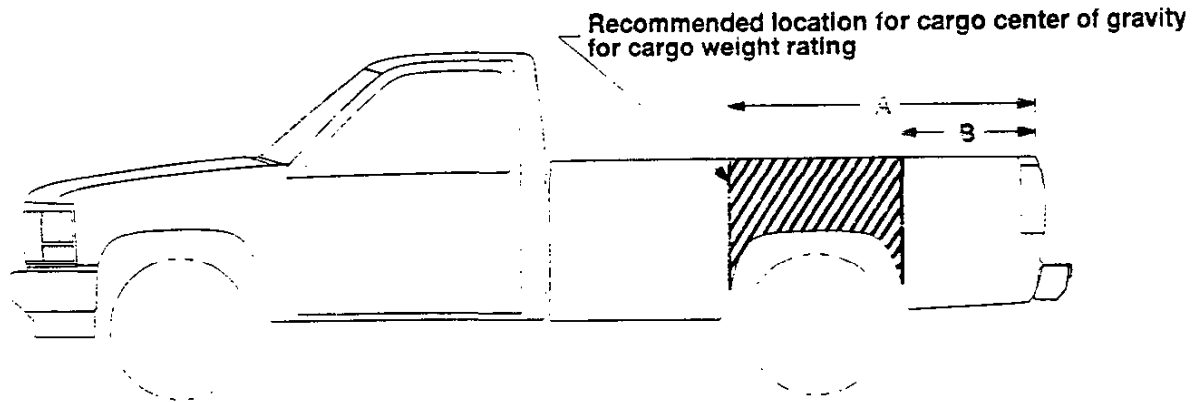
All illustrations and specifications contained in this literature are based on the latest product information available at the time of publication approval. The right is reserved to make changes at any time in prices, colors, materials, equipment, specifications and models, and also to discontinue models.

TRUCK-CAMPER LOADING

Consumer Information Regulation 575.103 requires manufacturers of trucks capable of accommodating slide-in campers to specify the vehicles' Cargo Weight Rating (CWR) and the longitudinal limits within which the center of gravity for the cargo weight rating should be located.

Cargo Weight Rating (CWR)—The cargo weight rating of a vehicle means the value specified by the vehicle manufacturer as the cargo-carrying capacity of a vehicle in pounds, exclusive of (minus) the weight of occupants, computed as 150 pounds times the number of designated seating positions.

Longitudinal Center of Gravity (CG) Zone for CWR—The forward limit of the recommended CG Zone is determined by the application of dimension "A" measured in inches from the rear of the truck bed. The rearward limit of the recommended CG Zone is established by application of dimensions "B", also measured in inches from the rear of the truck bed. The recommended CG Zone lies between these points.



Model _____ Calculated Cargo Weight Rating _____
 Dimension A _____ Dimension B _____

Limitations on Recommended CG Zones

FORWARD LIMIT

- (1) Must not extend beyond the inside surface of the pickup box.
- (2) Must not exceed the front gross axle weight rating (GAWR).

REARWARD LIMIT

- (1) Must be no farther rearward than the inside surface of the pickup box.
- (2) Must not exceed the gross axle weight rating (GAWR) of the rear axle.
- (3) Must not exceed rear axle load limits below:

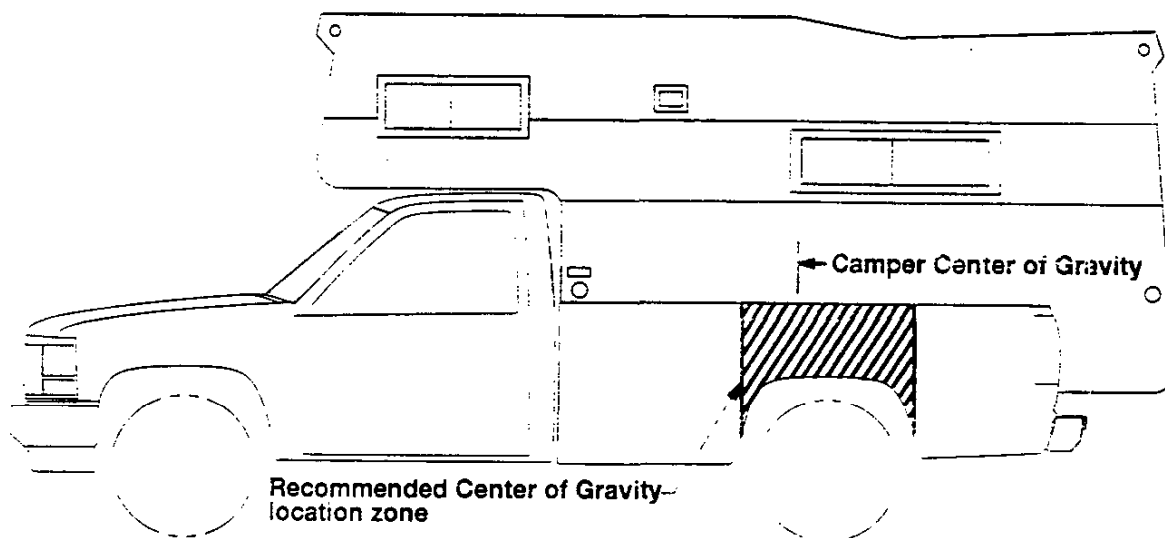
Series	Rear Axle Load Limits (% of GVWR)
S/T 10/Sonoma	62%
C/K 1500	60%
C/K 2500	65%
C/K 2500/C6P, C/K 3500	70%

Vehicle CG Identification—All General Motors Corporation trucks that may be suitable for carrying a slide-in camper incorporate a Truck-Camper Loading information label located on the glove box floor on C/K and S/T 10/Sonoma models. The vehicle identification number (VIN), the as-manufactured cargo weight rating (CWR) of that vehicle plus the CG limits of dimension "A" and "B" for that vehicle in inches are included.

Vehicle and Truck-Camper Loading are also discussed at length in the Vehicle Owner's Manual.

TRUCK-CAMPER LOADING

Loading Instructions—When the truck is used to carry a slide-in camper, the total cargo load of the truck consists of the manufacturer's camper weight figure, the weight of installed additional camper equipment not included in the camper manufacturer's weight figure, the weight of camper cargo and the weight of passengers *in the camper*. The total cargo load should not exceed the truck's cargo weight rating (CWR) and the camper's center of gravity should fall within the truck's recommended center of gravity zone when installed.



Any accessories or other equipment added to this vehicle, after final date of manufacture, must be weighed or have their weight determined, and the weight deducted from the prescribed cargo weight rating (CWR) of this vehicle. This may decrease the permissible longitudinal zone of the center of gravity for this vehicle.

The longitudinal center of gravity zone has been determined for the full cargo weight rating of this truck. If a slide-in camper has a total weight less than the cargo weight rating (CWR), the permissible longitudinal zone of the center of gravity may be larger. However, individual axle loads should not exceed either of the gross axle weight ratings (GAWR).

Secure loose items to prevent weight shifts that could affect the balance of your vehicle. When the truck camper is loaded, drive to a scale and weigh on the front and on the rear separately to determine the axle loads. Individual axle loads should not exceed either of the gross axle weight ratings (GAWR). The total of the axle loads should not exceed the gross vehicle weight rating (GVWR). These ratings are given on the vehicle identification plate and on the vehicle certification label which are located on the left side of the vehicle, normally on the door latch post or door edge next to the driver. If weight ratings are exceeded, move or remove items to bring all weights below the ratings.

CAUTION: The longitudinal center of gravity is only one of the many factors which may affect the overall performance of a vehicle, including handling, steering and braking. The cargo load should be distributed on both sides of the centerline as equally as possible. The recommended longitudinal limits for the camper's center of gravity are based on the assumption that the vehicle will be operated with reasonable prudence in light of all of the existing conditions. Failure to do so could result in unsatisfactory vehicle performance and could make the vehicle unsafe to operate.

In this connection, refer to any recommendations by the slide-in camper manufacturer regarding installation and loading of the camper.

TRUCK-CAMPER LOADING

DEFINITION OF TERMS

For the purposes of calculating Truck-Camper Loading in this book, listed below are some common terms and abbreviations:

Cargo Weight Rating (CWR)—means the value specified by the vehicle manufacturer as the cargo-carrying capacity of a vehicle in pounds, exclusive of (minus) the weight of occupants, computed as 150 pounds times the number of designated seating positions.

Center of Gravity (CG)—point where the mass of a body is concentrated and if suspended at that point would balance front and rear.

Curb Weight—weight of a vehicle without driver, passengers or cargo but including maximum capacity of fuel, oil, coolant and other items of standard equipment.

Dimension A & B—front and rear limit of Center of Gravity (CG) zone.

Gross Vehicle Weight Rating or 'GVWR' means the value specified by the manufacturer as the loaded weight of a single vehicle.

Gross Axle Weight Rating or 'GAWR' means the value specified by the vehicle manufacturer as the load carrying capacity of a single axle system measured at the tire-ground interfaces.

Model Weight—weight of the vehicle with all items of standard equipment, 150 pounds per passenger in each designated seating position and maximum capacity of fuel, oil and coolant.

Payload Rating is the maximum allowable load (including the weight of the driver and all occupants) that the vehicle can carry based on all factory-installed equipment on the vehicle.

RPO—Regular Production Option.

Slide-in Camper—means a camper having a roof, floor, and sides, designed to be mounted on and removable from the cargo area of a truck by the user.

Weight Distribution—the amount of a vehicle's weight that rests on each axle.

Wheelbase (WB)—the distance from the centerline of the front axle to the centerline of the rear axle.

LIMITATIONS

The following General Motors truck models are not recommended for slide-in camper applications:

- Any pickup model with a cargo weight rating (CWR) of less than 500 lbs. A statement to this effect is imprinted on the Truck-Camper Loading information label which states whether that vehicle is recommended for use with a slide-in camper.
- S 10/Sonoma (2WD) Pickup with 4200 lb. GVWR.
- T 10/Sonoma (4x4) Pickup with 4650 lb. GVWR.
- S/T 10/Sonoma Pickup with 108.3" WB.
- S/T 10/Sonoma Extended Cab Pickup.

Note: C/K 1500 Pickups should not be used for larger, cab-over type slide-in campers.

TRUCK-CAMPER LOADING

S/T PICKUPS, C/K PICKUPS, EXTENDED/CLUB AND CREW CAB PICKUPS

INSTRUCTIONS FOR PROSPECTIVE TRUCK PURCHASERS VEHICLE SELECTION AND WEIGHT ANALYSIS

1. For S/T 10/Sonoma Models.

You must order S/T 10803 (117.9" WB) model with one of the following GVWR Ratings:

S 10803 (2WD)	4600 lb. GVWR	Option C5D
S 10803 (2WD)	4900 lb. GVWR	Option C5A
T 10803 (4x4)	5150 lb. GVWR	Option C6F

If you intend to use a slide-in camper on your S/T 10 Sonoma Pickup, record the model on page 3. Record the model GVWR, front GAWR, and rear GAWR on page 7. These ratings can be found in the S/T 10/Sonoma section of the General Motors Light-Duty Truck Data Book or Chevrolet Light-Duty Technical Guide on the Specifications pages. This information is also available in the Chevrolet Spec Manager computer program.

For C/K Models

From the model selection pages of the C/K pickup section of the GMC Light-Duty Truck Data Book, Chevrolet Light-Duty Technical Guide or the Chevrolet Spec Manager System, select the pickup model you desire. Record this information on page 3. Refer to the Specification section for the selected model. Select the GVWR you require and note any minimum tire size and chassis equipment requirements for that GVWR. (To approximate the GVWR you require, add your loaded camper weight to the vehicle curb weight plus the occupants weight at 150 lbs. per designated seating position.) Record the GVWR and the Gross Axle Weight Rating (GAWR), Front and Rear (from the Specifications section) on line 1 of the camper loading worksheet, page 7.

- Record the front and rear curb weights of your selected vehicle on line 2, page 7.
- Record the front and rear passenger weights on line 3, page 7.
- List all factory-installed options you desire, including any options required by your selected GVWR, with their front and rear weights on the Pickup camper loading worksheet on page 7.
- Total the front and rear weights of vehicle model and options to arrive at the total front and rear weight of the vehicle. Follow the directions on page 7, lines 5 through 5C to arrive at the adjusted total vehicle weight.
- Subtract the adjusted total vehicle weight from the GVWR to arrive at the cargo weight rating (CWR) of your truck.* Record this information on page 3.
- Proceed to page 11 and calculate the center of gravity location limits using front and rear GAWRs, cargo weight rating (CWR), and front and rear weight of truck as determined above. Record this information on page 3.

*The addition of any dealer-installed or other accessories will reduce the cargo-carrying capacity by the weight of the equipment installed.

TRUCK – CAMPER LOADING S/T PICKUPS, C/K PICKUPS

WORKSHEET – CARGO WEIGHT RATING

1. Model GVWR _____ GAWR FRONT _____ REAR _____

2. Curb Weights: FRONT _____ REAR _____

3. Passenger Weights: FRONT _____ REAR _____

4. Other factory-installed options:

4a. TOTALS _____

5. Front and Rear Weights _____

5a. Vehicle sub-total weight (add front and rear weight) _____

5b. Add 50 lbs. for all models* -50.0

5c. Adjusted total vehicle weight: _____

6. Vehicle GVWR: _____

Adjusted total vehicle weight (– _____)

Cargo Weight Rating _____

Record on page 3.

* If your vehicle is available, drive to a scale and weigh, with occupants, full fuel tank, and other factory-installed options to determine the adjusted total vehicle weight. You will then be able to use your actual total vehicle weight and not have to add the 50#.

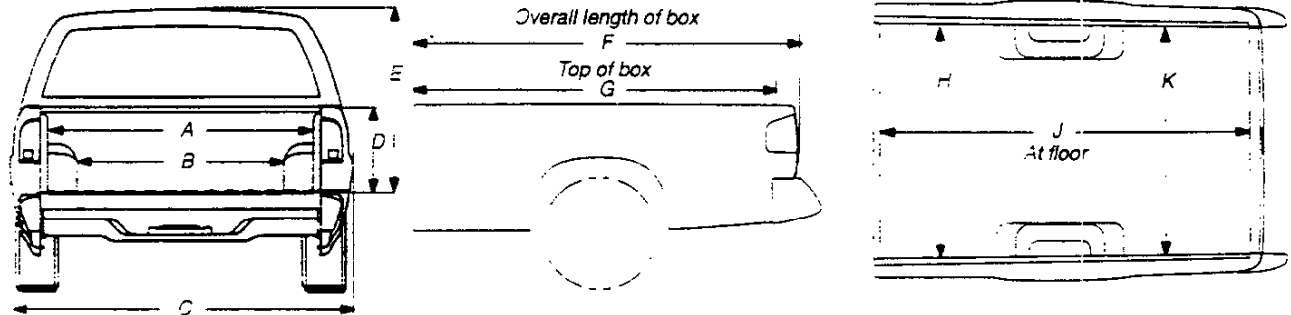
TRUCK-CAMPER LOADING DIMENSIONS

S/T PICKUP

S 10/SONOMA

Long Box (Model S/T 10803)

	A	B	C	D	E	F	G	H	J	K
Long Box	52.00	40.35	57.9"	16.81	36.25	93.3	88.3	56.61	87.6	56.61



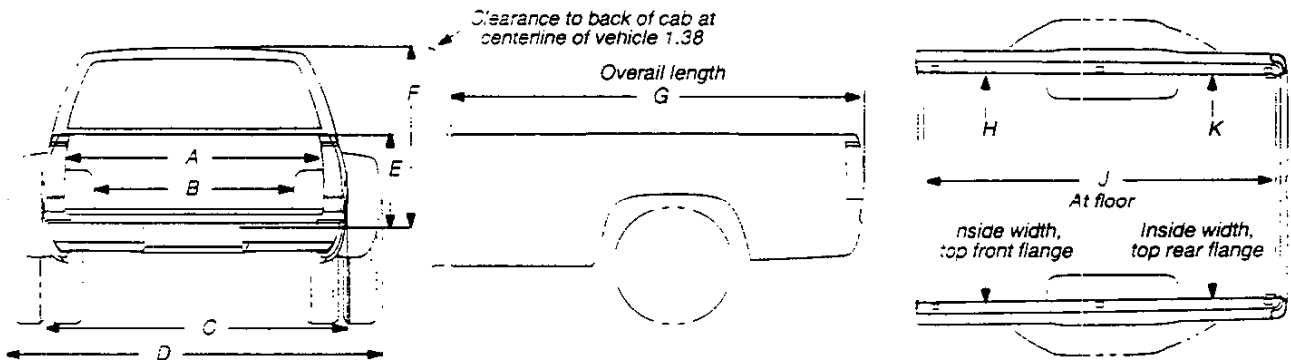
C/K PICKUPS

FLEETSIDE/WIDESIDE

Short Box (Models C/K 10703, 10753, 20753)

Long Box (Models C/K 10903, 10953, 20903, 20953, 30903, 30943, 30953)

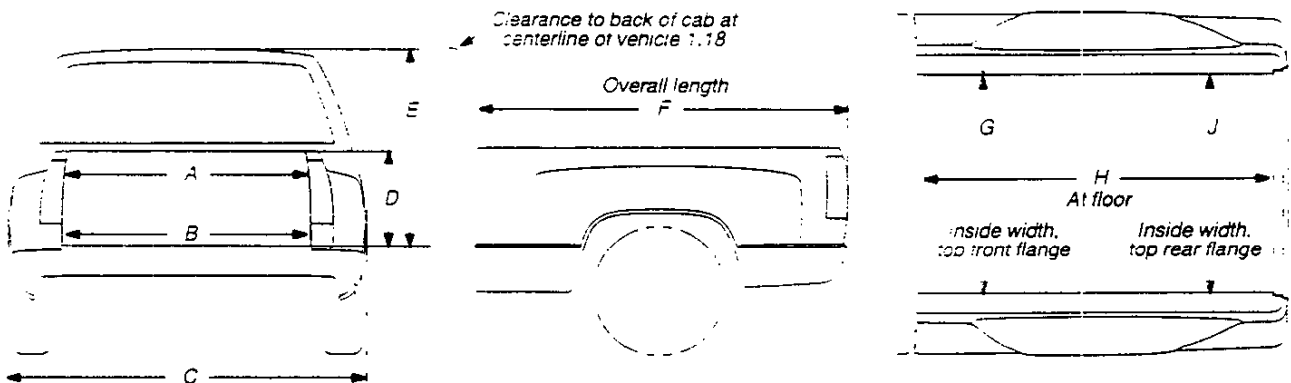
	A	B	C	D	E	F	G	H	J	K
Short Box	60.24	49.06	76.75	94.3	19.29	41.44	82.48	63.78	78.66	61.89
Long Box	60.24	49.06	76.75	94.3	19.29	41.44	101.38	63.78	97.56	61.89



SPORTSIDE

Short Box (Model C/K 10703, 10753&E62)

	A	B	C	D	E	F	G	H	J
Short Box	49.13	49.13	76.8	19.29	41.44	82.29	49.13	78.7	49.13



TRUCK-CAMPER LOADING DIMENSIONS

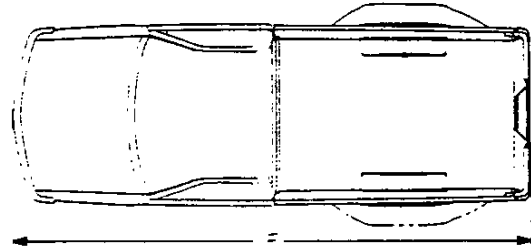
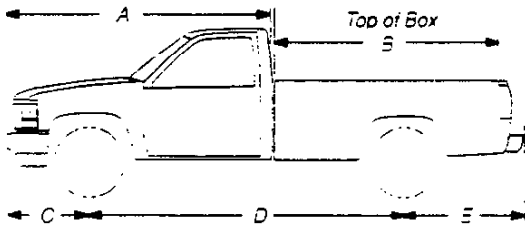
C/K PICKUPS

STANDARD CAB PICKUPS

Short Box (Models C/K 10703)

Long Box (Model C/K 10903, 20903, 30903)

	A	B	C	D	E	F
Short Box	111.0	77.2	35.4	117.5	41.8	194.5
Long Box	111.0	96.1	35.4	131.5	46.5	213.4

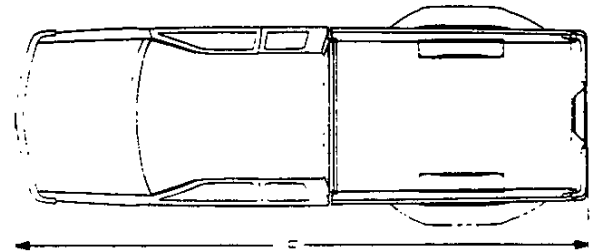
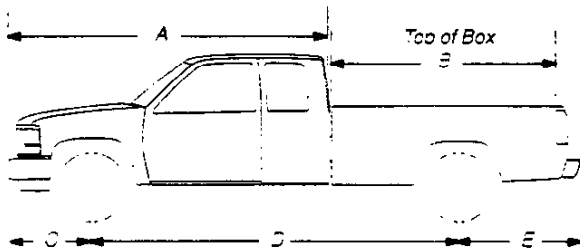


EXTENDED CAB PICKUPS

Short Box (Model C/K 10753, 20753)

Long Box (Model C/K 10953, 20953, 30953)

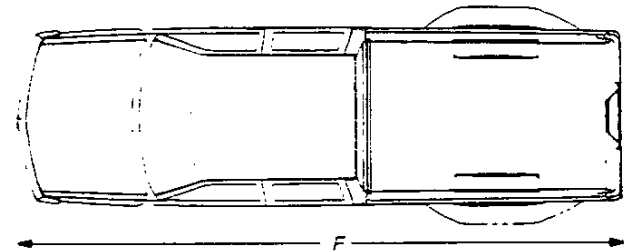
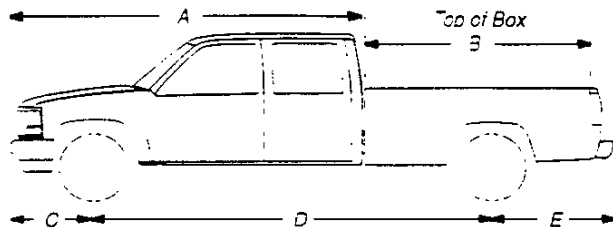
	A	B	C	D	E	F
Short Box	135.0	77.2	35.4	141.5	41.6	218.5
Long Box	135.0	96.1	35.4	155.5	46.5	237.4



CREW CAB PICKUPS

Long Box (Model C/K 30943)

	A	B	C	D	E	F
Long Box	148.5	96.1	35.9	168.5	46.5	250.9



TRUCK-CAMPER LOADING

MODEL CODES AND DIMENSIONS

SERIES	MODEL NUMBER	PICKUP BOX LENGTH	PICKUP STYLE	WB	"C"
--------	--------------	-------------------	--------------	----	-----

REGULAR CAB MODELS

S/T 10/ Sonoma	S/T 10803	7.4'	Fleetside/Wideside (E63)	117.9"	42.90"
C/K 1500	C/K 10703	6.5'	Fleetside/Wideside (E63) Sportside (E62)	117.5" 117.5"	38.53" 38.48"
	C/K 10903	8'	Fleetside/Wideside (E63)	131.5"	43.46"
C/K 2500	C/K 20903	8'	Fleetside/Wideside (E63)	131.5"	43.46"
C/K 3500	C/K 30903	8'	Fleetside/Wideside (E63)	131.5"	43.46"

EXTENDED/CLUB CAB MODELS

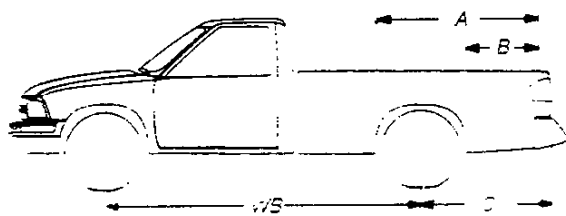
C/K 1500	C/K 10753	6.5'	Fleetside/Wideside (E63) Sportside (E62)	141.5" 141.5"	38.53" 38.48"
	C/K 10953	8'	Fleetside/Wideside (E63)	155.5"	43.46"
C/K 2500	C/K 20753	6.5'	Fleetside/Wideside (E63)	141.5"	38.53"
	C/K 20953	8'	Fleetside/Wideside (E63)	155.5"	43.46"
C/K 3500	C/K 30953	8'	Fleetside/Wideside (E63)	155.5"	43.46"

CREW CAB MODELS

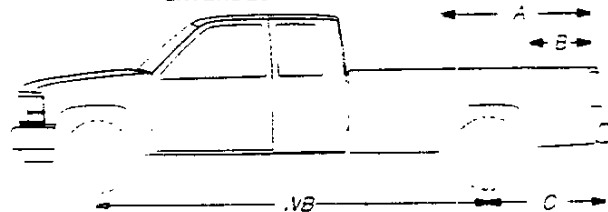
C/K 3500	C/K 30943	8'	Fleetside/Wideside (E63)	168.5"	43.46"
----------	-----------	----	--------------------------	--------	--------

- * Dimension "C" is the distance from the centerline of the rear axle to the end of the pickup box floor.
Dimension A and B can be calculated by using the formula on page 11.

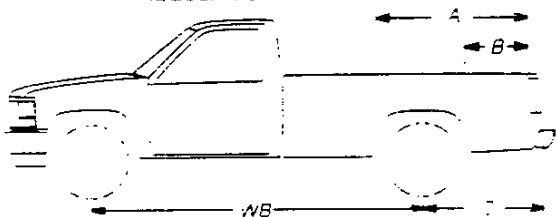
REGULAR CAB S 10/SONOMA PICKUPS



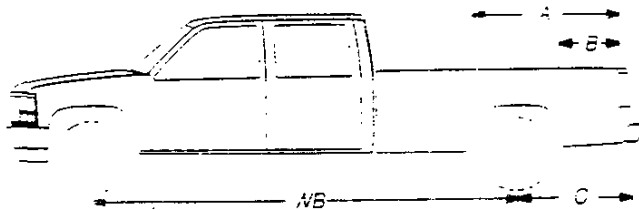
EXTENDED CAB C/K PICKUPS



REGULAR CAB C/K PICKUPS



CREW CAB PICKUPS



TRUCK-CAMPER LOADING

CALCULATIONS TO DETERMINE FORWARD (A) AND REARWARD (B) LOCATION OF CENTER OF GRAVITY FOR CARGO WEIGHT RATING

Calculations for Dimension A

$$A = \left\{ \frac{\text{Front GAWR} - 1.05 \times \text{Front Weight}^* \text{ of Truck}}{\text{Cargo Weight Rating}} \right\} \times \text{WB} + C$$

Enter Front GAWR _____

Subtract Front Weight* of Truck x 1.05 - (_____)

 Answer _____

Divide Answer by Cargo Weight Rating (CWR) ÷ _____

 Answer _____

Multiply Answer by Wheelbase (See Chart on page 10) X _____

 Answer _____

Add C Dimension to Answer (See Chart on page 10) +C _____

 Dimension A = _____

Note: if "A" is greater than pickup box length, use box length for "A" dimension.

Calculations for Dimension B

$$B = \left\{ 1 - \frac{\text{Rear GAWR} - 1.1 \times \text{Rear Weight}^* \text{ of Truck}}{\text{Cargo Weight Rating}} \right\} \times \text{WB} + C$$

Enter Rear GAWR _____

Subtract Rear Weight* of Truck x 1.1 - (_____)

 Answer _____

Divide Answer by Cargo Weight Rating (CWR) ÷ _____

 Answer _____

Subtract Answer from 1.000 - (_____)

Multiply Answer by Wheelbase (See Chart on page 10) X _____

 Answer _____

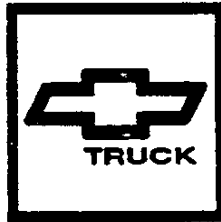
Add C Dimension to Answer (See Chart on page 10) +C _____

 Dimension B = _____

Note: If "B" dimension is negative, use 0 (zero) for "B" dimension.
 If "B" dimension is greater than "A" dimension, camper usage is not recommended at the Calculated Cargo Weight Rating. Camper usage may be possible for a lighter camper. Substitute known specific camper weight (less than Cargo Weight Rating) for Cargo Weight Rating in calculations above to determine "A" to "B" range for that specific camper.

Record dimension A and B on page 3.

* Front page 7 line 4a.



CHEVROLET MOTOR DIVISION
30007 VAN DYKE AVENUE
WARREN, MICHIGAN 48090



GMC TRUCK DIVISION
31 JUDSON STREET
PONTIAC, MICHIGAN 48342-2230